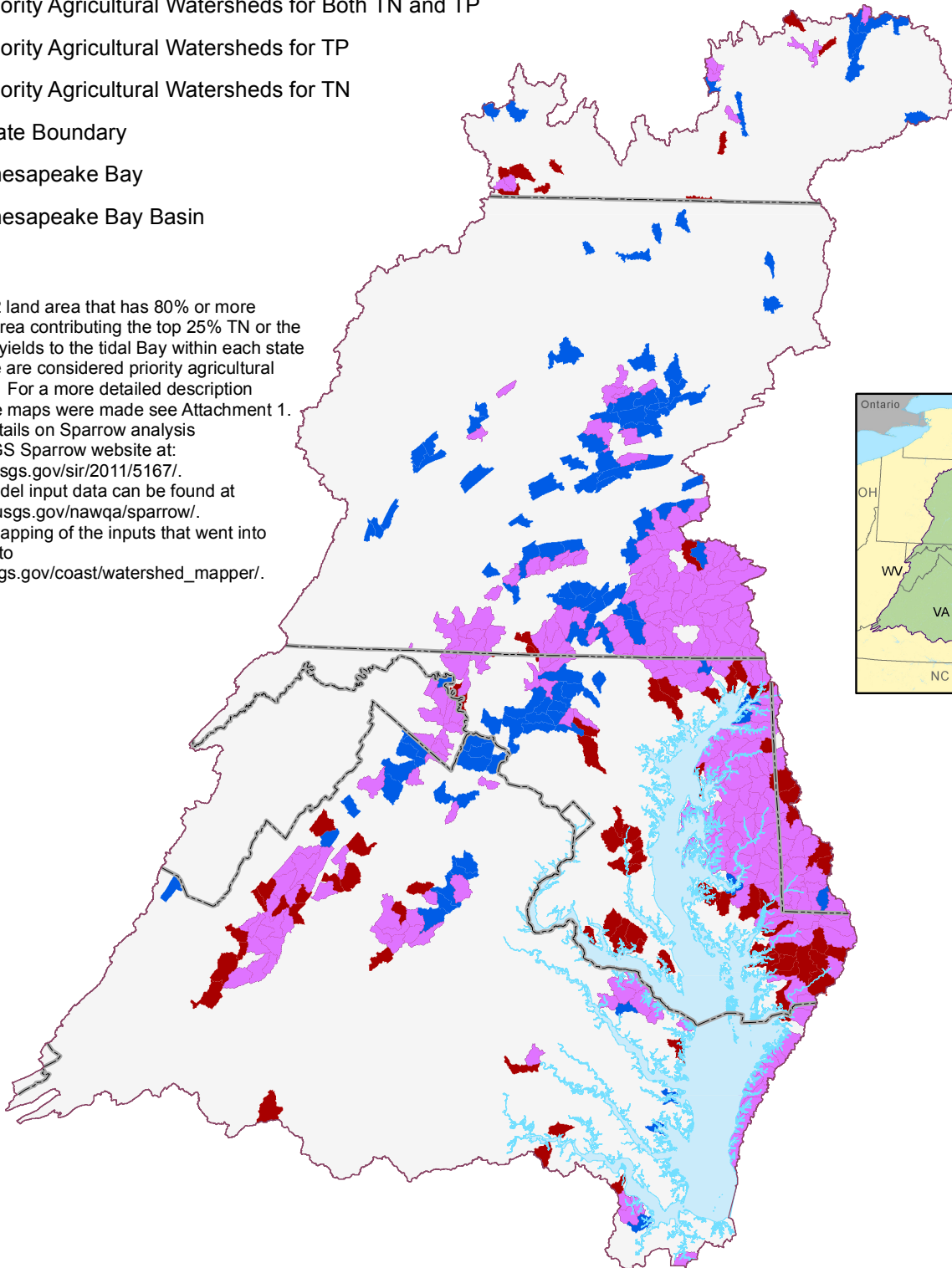


# Priority Agricultural Watersheds in Which to Focus Nitrogen and Phosphorus Reduction Activities



- Priority Agricultural Watersheds for Both TN and TP
- Priority Agricultural Watersheds for TP
- Priority Agricultural Watersheds for TN
- State Boundary
- Chesapeake Bay
- Chesapeake Bay Basin

Any HUC-12 land area that has 80% or more of the land area contributing the top 25% TN or the top 25% TP yields to the tidal Bay within each state or basinwide are considered priority agricultural watersheds. For a more detailed description of how these maps were made see Attachment 1. For more details on Sparrow analysis see the USGS Sparrow website at: <http://pubs.usgs.gov/sir/2011/5167/>. Selected model input data can be found at <http://water.usgs.gov/nawqa/sparrow/>. For online mapping of the inputs that went into this map go to [http://lcat.usgs.gov/coast/watershed\\_mapper/](http://lcat.usgs.gov/coast/watershed_mapper/).



Data Sources: Chesapeake Bay Program  
 For more information, visit [www.chesapeakebay.net](http://www.chesapeakebay.net)  
 Disclaimer: [www.chesapeakebay.net/termsfuse.htm](http://www.chesapeakebay.net/termsfuse.htm)

