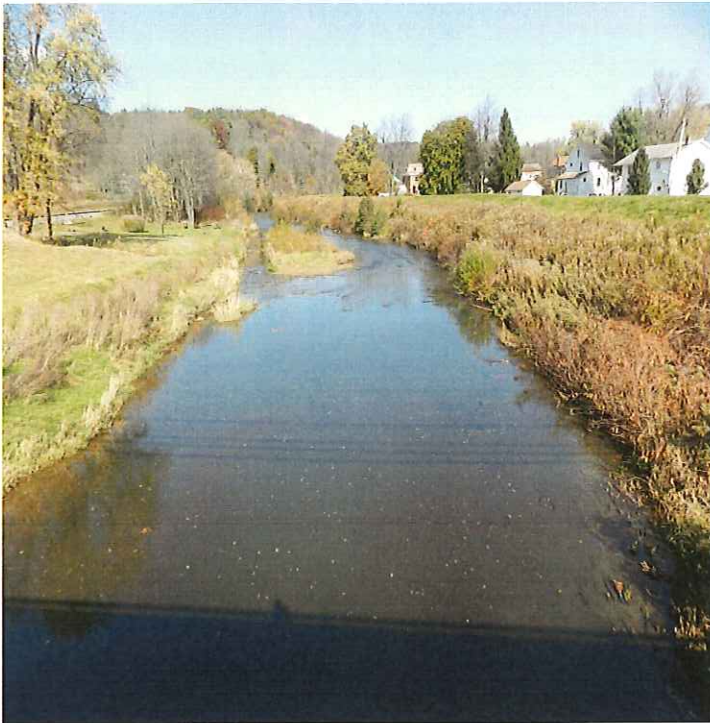


PROJECT SUMMARY
Cherry Tree Flood Control Restoration Project
Phase II – West Branch Susquehanna River

Project Description: The Project recreated a low flow meandering channel within 1200 linear feet of the flood control area in the Phase II section and another additional 840 linear feet in the original Phase I area all by utilizing fish habitat devices.

Project Goals: The goals of the Project were to improve sediment transport through the flood control area while improving fish habitat and reducing sediment loading from eroded streambanks on the the West branch Susquehanna River.

Project Results: A low flow meandering channel was constructed, fish habitat improved, streambanks stabilized and improvement in sediment transport obtained.



Pre - Construction



Post - Construction

Project Costs: \$ 52,840.55

Project Grants/Contributions: DEP Growing Greener \$70,701.00

Contractor: Earth Shapers LLC

Project Material Suppliers: Topnotch Logging, Cambria Welding & Fabricating, and JM Delullo,

Partners: Cherry Tree Borough, the PA Fish & Boat Commission, the PA Department of Environmental Protection, the PACD Growing Greener Technical Office, and the Cambria County Conservation District.

Contact Information: Cambria County Conservation District
Mark Stockley @ 814-472-2120 or mstockley@co.cambria.pa.us