

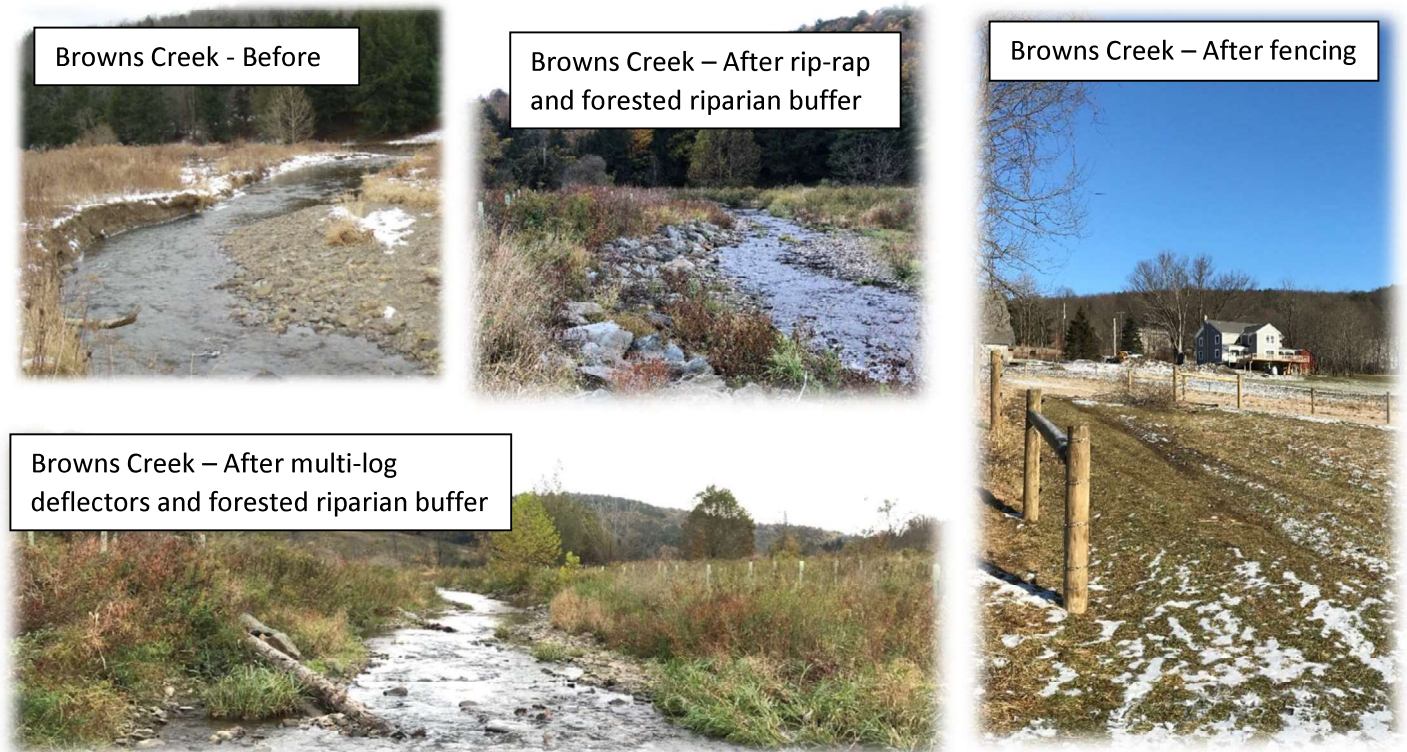
Browns Creek Stream Corridor Rehabilitation
Growing Greener Program - Document #4100080566
Sugar Creek Watershed Association

PROJECT DESCRIPTION: Browns Creek is identified on the 303d impaired streams list due to siltation. The watershed has significant sediment and nutrient inputs from streambank erosion and agricultural stormwater runoff. This project included the stabilization of excessively eroding streambanks and cattle exclusion from a segment of Browns Creek, a major tributary in the Sugar Creek watershed.

PROJECT GOALS: Goals include establishing a stable riparian corridor while reducing sediment, nitrogen, and phosphorus inputs into Browns Creek, and ultimately the Chesapeake Bay.

PROJECT RESULTS: Working with the Bradford County Conservation District, the Upper Susquehanna Coalition, and the Chesapeake Bay Foundation, we were able to accomplish floodplain reconnection and rehabilitate nearly 2,200 feet of streambank through the installation of 20 multi-log vane deflectors, 935 feet of rock rip-rap bank protection, 3 constructed riffles, 75 feet of bank-cover cribbing, and 2 agricultural crossings. In 2019, approximately 14 acres of forested riparian buffer was established. Nutrient management and conservation planning was completed on approximately 60 acres of farmland and approximately 13,000 feet of pasture fencing was installed. Sediment reductions are estimated at 886 tons annually, which corresponds to annual Nitrogen and Phosphorus reductions of 2,215 lbs and 886 lbs, respectively.

PHOTOS: Project photos of completed stream and road Best Management Practices (BMPs)



PROJECT COSTS: \$68,000 (Growing Greener); \$80,000 (NFWF via Upper Susquehanna Coalition); \$23,000 (Chesapeake Bay Foundation)

LESSONS LEARNED: Great partnerships yield exceptional results.

PARTNERS: Bradford County Conservation District; USDA-NRCS; Upper Susquehanna Coalition; Chesapeake Bay Foundation - To view a brief project video go to: <https://www.youtube.com/watch?v=tlWBIW31Jmw&feature=youtu.be>

CONTACT INFORMATION: Roger Hetrick, SCWA President @ hetrick@ptd.net
or Joe Quatrini, Bradford County Conservation District at joe.quatrini@pa.nacdnet.net