

Manor Borough Stormwater Retrofit
Growing Greener, Grant Document Number: C990002521
Sponsor: Westmoreland Conservation District

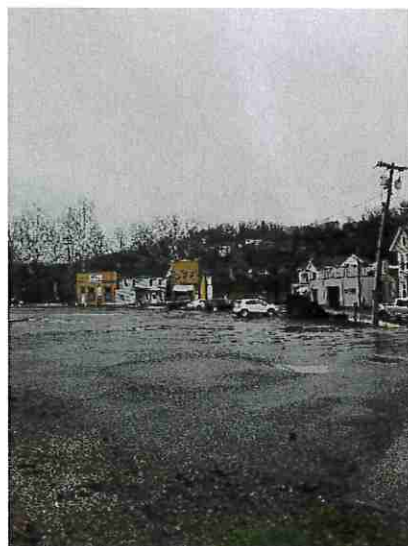
PROJECT DESCRIPTION: The Manor Borough Stormwater Retrofit project implemented the design and installation of green infrastructure Best Management Practices which included two rain gardens and approximately 1,120 square feet of permeable parking. This project focused on retaining and promoting infiltration of stormwater on the borough building's parking lot. The rain gardens and permeable pavement will help reduce flooding, prevent sedimentation to Brush Creek, and improve water quality.

PROJECT GOALS: The purpose of this project was to reduce flooding and sedimentation to Brush Creek and provide support to the MS4 community of Manor Borough through the implementation of green infrastructure projects. The goal was to construct stormwater controls on the borough building's parking lot that will help retain stormwater and improve water quality.

PROJECT RESULTS: Rain gardens, permeable parking, and concrete curbs were constructed. Lawn areas were expanded and trees and shrubs were planted.

BMP	Location	Acres managed	TSS per year	TP per year	NO3 per year
Rain Gardens	Manor Borough Building	1 ac	620 lbs	2.2 lbs	1.1 lbs
Permeable Parking	Manor Borough Building	1 ac	4.7 lbs	.02 lbs	.02 lbs

PHOTOS:



(Before) Manor Borough Parking Lot



(After) Manor Borough Parking Lot

PROJECT COSTS: \$133,500 Growing Greener, \$25,234.30 Manor Borough cash match, \$20,381.60 WCD cash match (RK Mellon), \$5,840.89 WCD In-Kind Match

LESSONS LEARNED: Constant communication between the contractor and landowner is crucial for a successful project.

PARTNERS: Westmoreland Conservation District, Manor Borough

CONTACT INFORMATION: Westmoreland Conservation District, Hank Bradish @ hank@wcdpa.com, 724-837-5271