

Water Quality Data Support Tools are free resources that provide individuals, organizations, and government agencies critical information for cleaning up local waters. These tools can be useful for identifying sources of water pollution and can be used to efficiently target resources and funds to address the source of the problem. Any questions about the tools should be directed to the organization that developed the tool.

Integrated Water Quality Report

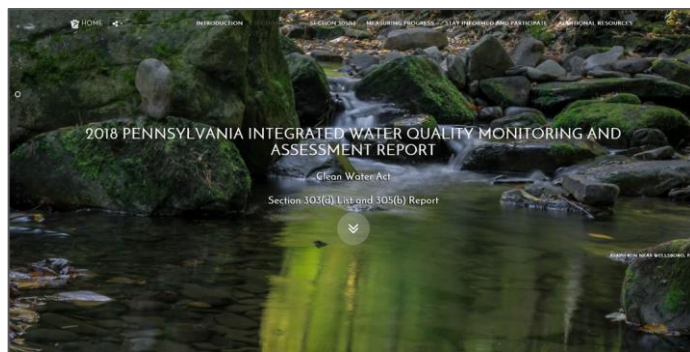
www.dep.pa.gov/Business/Water/CleanWater/WaterQuality/IntegratedWatersReport/Pages/default.aspx

Pennsylvania's Integrated Water Quality Monitoring and Assessment Report satisfies the requirements of section 303(d) of the Clean Water Act. Section 303(d) requires states to list all impaired surface waters not supporting uses even after appropriate and required water pollution control strategies have been applied. The 303(d) list includes the reason for impairment, which may be one or more point sources, like industrial or sewage discharges, or nonpoint sources, like abandoned mine lands or agricultural runoff, and the pollutant causing the impairment such as metals, pH, mercury, or siltation.

Main Users: Public, Government agencies

Source Data: DEP

User Restrictions: None



View impaired streams and lakes, impairment causes, stream and lake names, and you can export information into a eps, gif, jpg, pdf, png or svg file.

Chesapeake Data Explorer

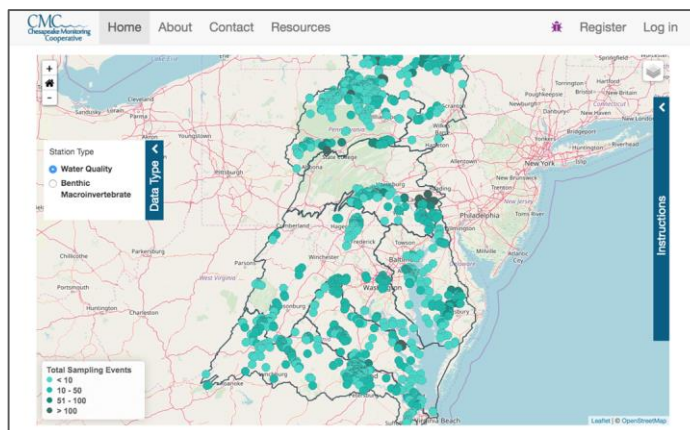
<https://cmc.vims.edu/#/home>

The Chesapeake Data Explorer is a tool for storing and sharing data collected by a network of water quality and benthic macroinvertebrate monitors working with the Chesapeake Monitoring Cooperative. These data are publicly accessible and are shared directly with the Chesapeake Bay Program and other data users. Information found in Pennsylvania's County Clean Water Technical Toolboxes is generated with the same information found in the Chesapeake Data Explorer.

Main Users: Public, County Coordinators

Source Data: Data collected by all sources, and accepted by the Chesapeake Bay Program

User Restrictions: None



Analyze land cover, hydrologic soil groups, permitted point source discharges and other natural and human influenced features.

Healthy Waters, Healthy Communities

Water Quality Data Support Tools

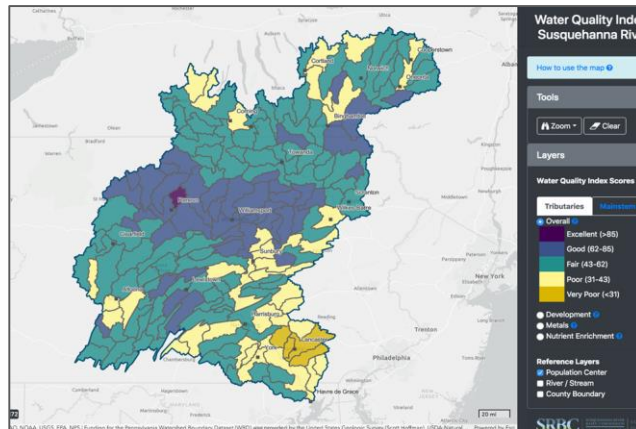


Water Quality Index Viewer

www.srbc.net/portals/water-quality-projects/water-quality-index

The Water Quality Index (WQI) is a tool created by Susquehanna River Basin Commission (SRBC) scientists to assess and compare water quality conditions throughout the Susquehanna River basin. The WQI map was developed using 15,874 samples collected from 2000-2019 at 1,781 sites. Scoring is comprised of three category scores and an overall water quality score.

Main Users: Public, County Coordinators
Source Data: SRBC
User Restrictions: None



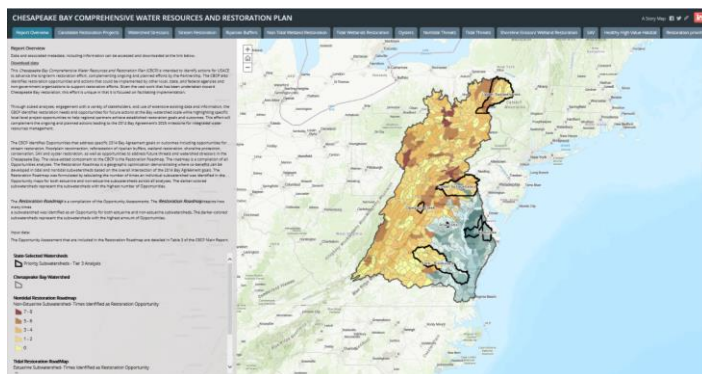
This map displays overall water quality conditions for tributary watersheds and sites in the Susquehanna River basin.

Chesapeake Bay Comprehensive Water Resource and Restoration Planner (CBCP)

<http://arcg.is/OLTXnK>

This tool helps identify actions for the U.S. Army Corps of Engineers (USACE) to advance long-term restoration efforts, complementing ongoing and planned efforts by the Partnership. The CBCP also identifies restoration opportunities and actions that could be implemented by other local, state, and federal agencies and non-government organizations to support restoration efforts.

Main Users: Public, County Coordinators
Source Data: USACE
User Restrictions: None



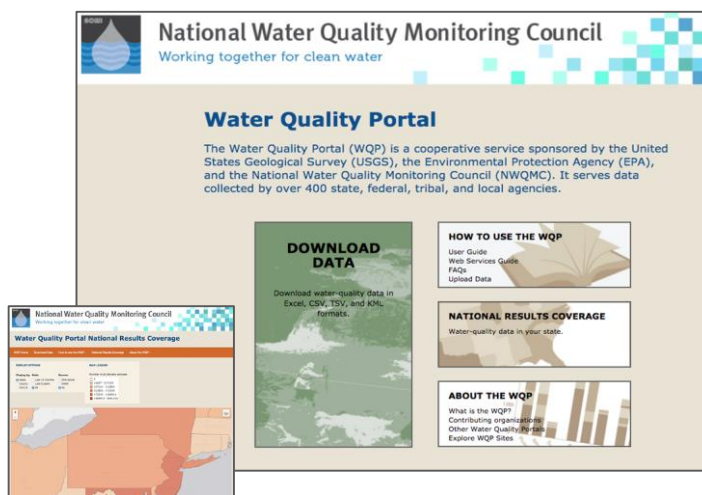
The data and tools complement information and expertise from state agencies, federal programs, and partner organizations by providing regional context, and can be adapted to reflect individual objectives.

National Water Quality Portal (NWQP)

www.waterqualitydata.us

The NWQP combines physical, chemical, and biological water quality data from multiple data sources at one location and provides the data in one format. The NWQP provides a single, user-friendly web interface to access the more than 250 million water quality data records collected by over 400 federal and state agencies, and other water quality partners. Data can be queried for quick results.

Main Users: Scientists, Policy Makers, Public
Source Data: USGS, EPA, National Water Quality Monitoring Council (NWQMC)
User Restrictions: None



The map display is an optional step, but can be helpful for identifying an exact site, to verify the location of results, or to find other site locations. From the map view, you can select a single station to identify the owner and download the data.