

On-the-ground applications of data and technology to advance restoration outcomes

PA State Team Meeting for Phase 3 WIP: July 28, 2022



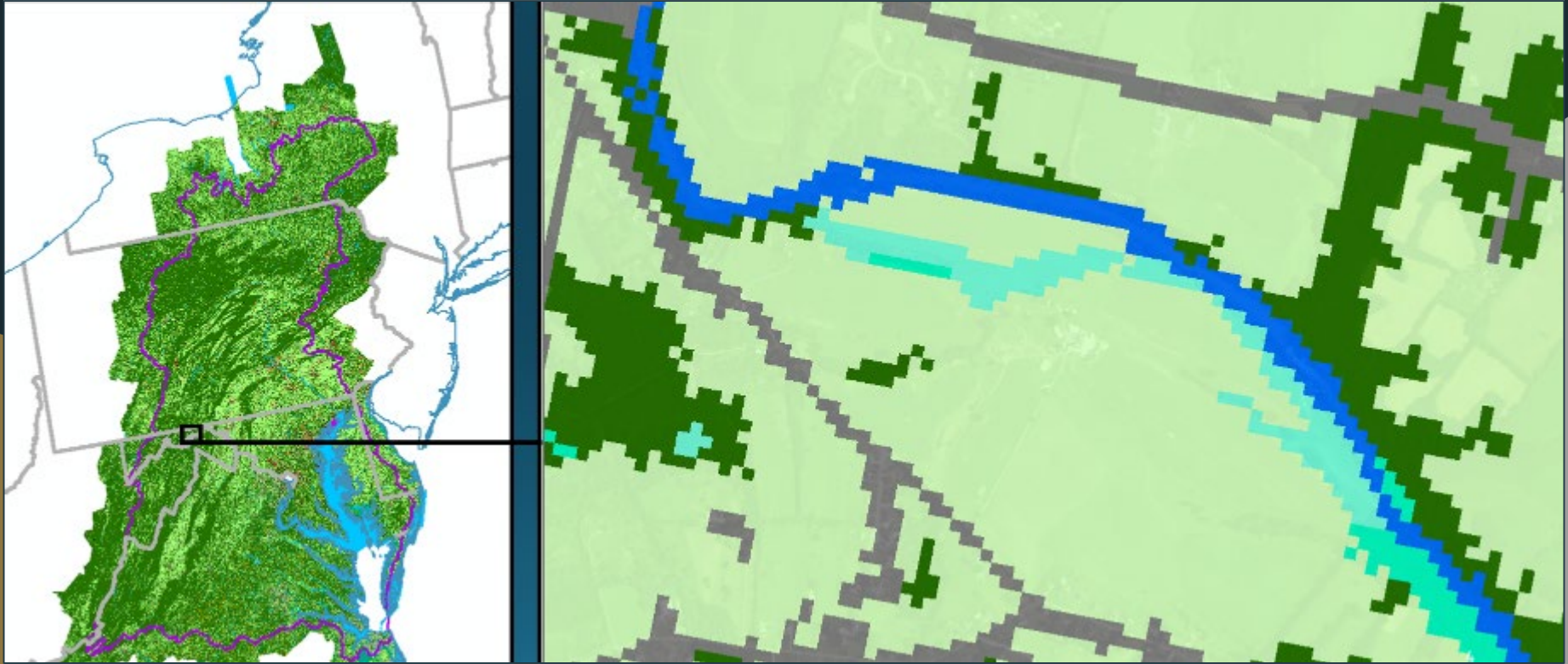
Carly Dean, Program Manager



2016 Chesapeake Bay High -resolution Land Cover Data



Previously Available Land Cover Data



2016 Chesapeake Bay High -resolution Land Cover Data



Chesapeake Bay Program Geospatial Support

Objective 1: Land Cover, Land Use and Change Mapping

Data released May 2022

Objective 2: Hyper-resolution Hydrography Mapping

Objective 3: Restoration Planning & Reporting (Opportunity Mapping, Nutrient and Sediment Reduction Modeling)

Objective 4: Mapping support for Chesapeake Bay Program Goal Implementation Teams (GITs)



Chesapeake Bay Program
Science, Risk, and Policy Partnership



Change Detection products: Tree Canopy Change



2013



2017



Anne Arundel County 2017 Tree Canopy

Impervious Surface Analysis

Example land uses:

- Roads
- Buildings
- Pavement

Less developed -> More developed (in 2017)

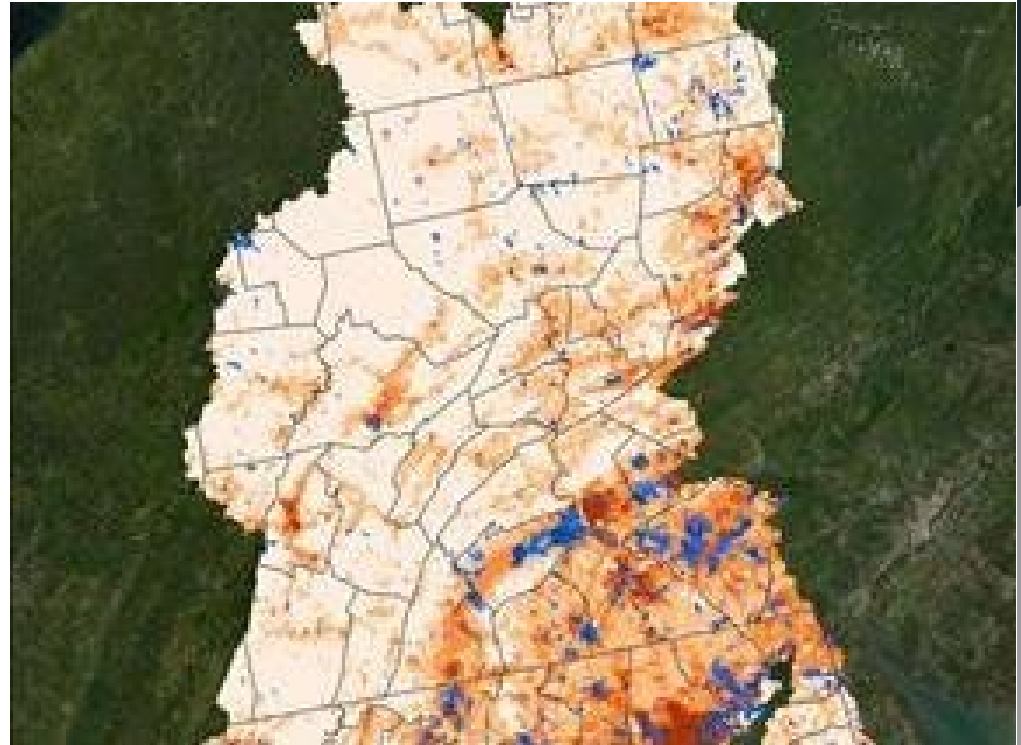
0%

68.3%

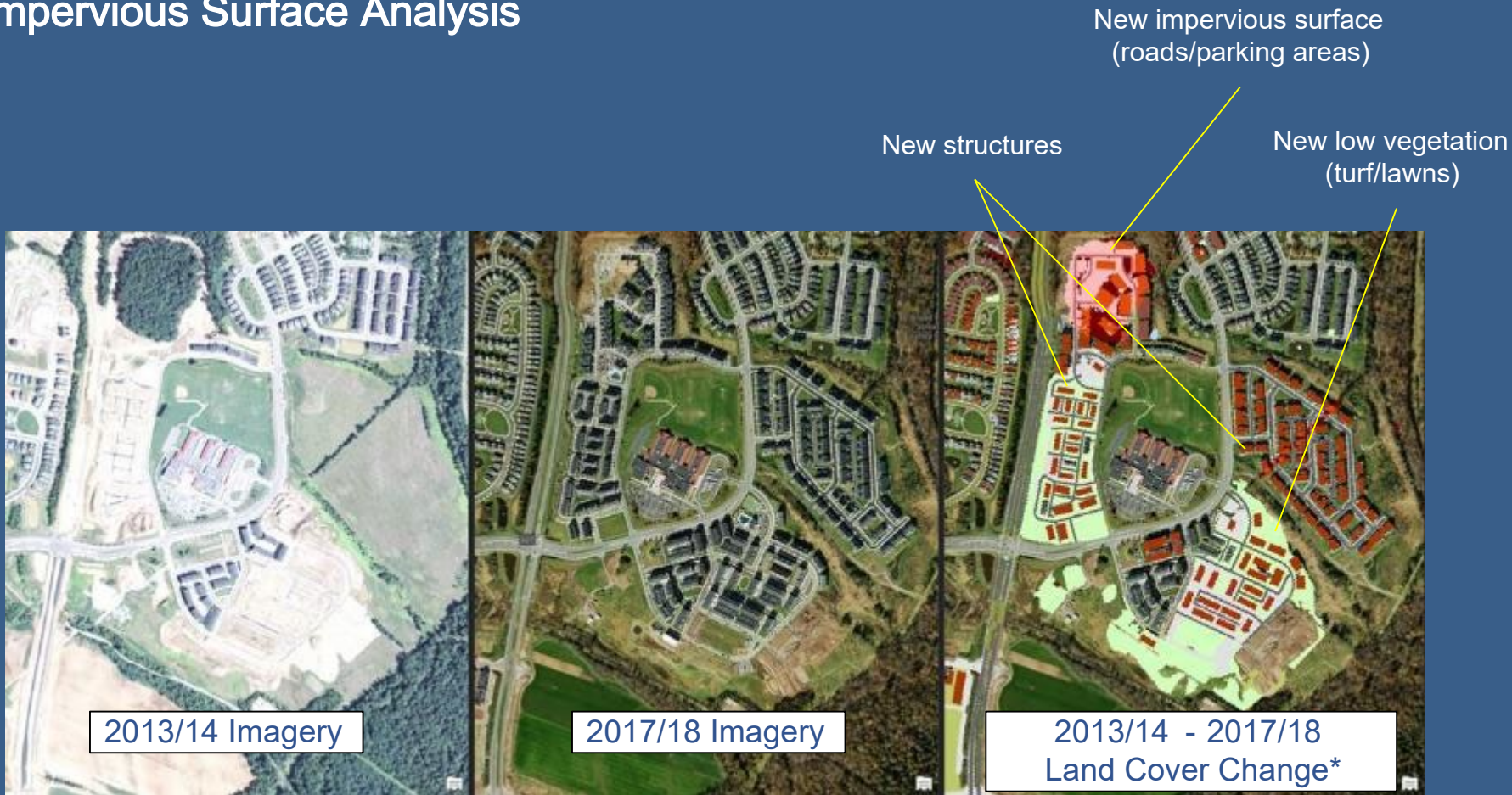
Change in impervious (increase from 2013 - 2017)

0%

3.8%



Impervious Surface Analysis



* data shown are preliminary results and may differ from the final released data

Previously Available Hydrography Data



High-resolution Hydrography Data



Leveraging High -resolution Data to Restore Impaired Streams

Pennsylvania “Rapid Stream Delisting Strategy” brings together:

- Water-Quality
- Fish, Wildlife, and Habitat
- Land Conservation
- Benefits to people

PA Dept. of Environmental Protection: Integrated Water Quality Report & 303(d) List;

- Non-attaining for aquatic life use
- Impaired from agricultural sources

Rapid Stream Delisting Strategy:

- Isolating relatively small impaired stream segments to achieve attainment status & delist
- Quantifying goals, needs, and feasibility
- Coordination and collaboration



Leveraging High -resolution Data to Restore Impaired Streams

Mapping how pollution enters our waterways

Fastest recovery: watershed analysis

Efficient implementation: “smarter, not harder”

Advancing momentum: local knowledge



Leveraging High -resolution Data to Restore Impaired Streams

Mapping how pollution enters our waterways

- 0.6 mi. of stream impaired

Fastest recovery: watershed analysis

- 232 total acres; 3 acres buffer gap (2013)

Efficient implementation “smarter, not harder”

- 5 priority farms; target 148 ag acres with BMPs

Advancing momentum: local knowledge



Leveraging High -resolution Data to Restore Impaired Streams

Mapping how pollution enters our waterways

- 0.6 mi. of stream impaired

Fastest recovery: watershed analysis

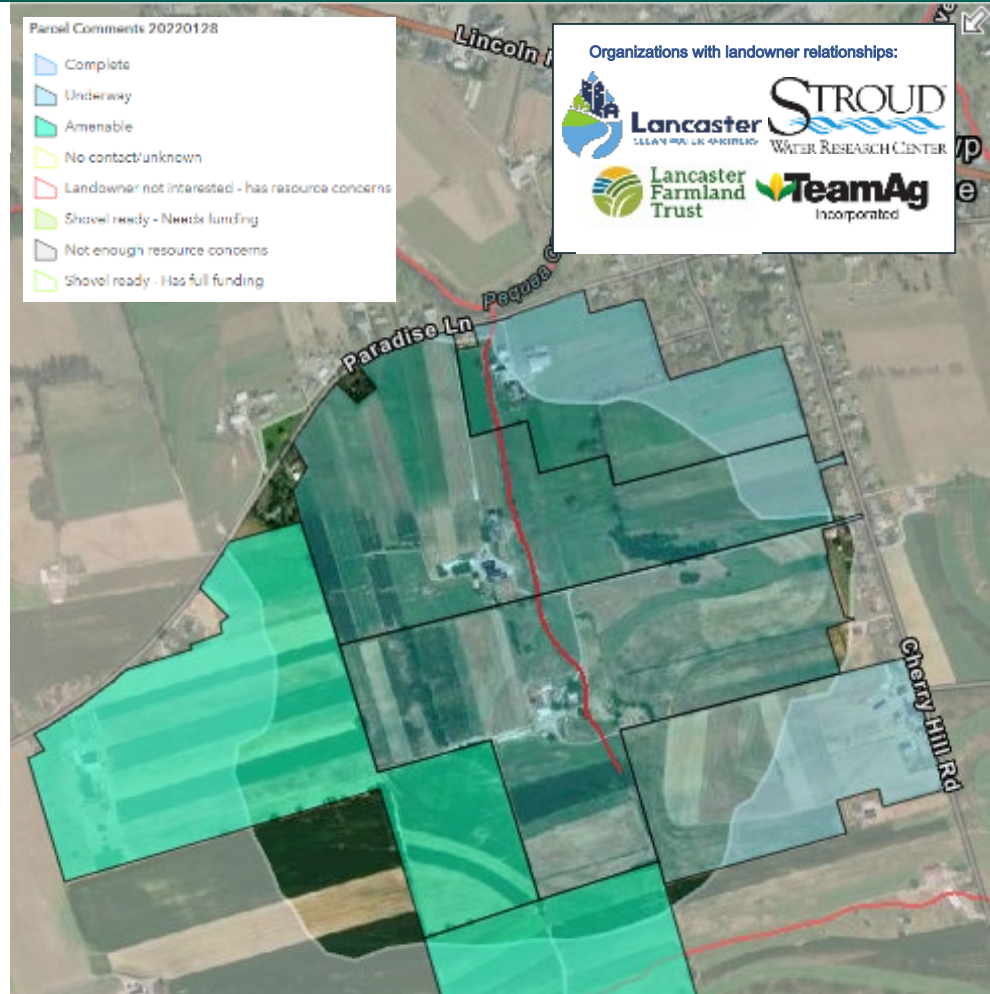
- 232 total acres; 3 acres buffer gap (2013)

Efficient implementation “smarter, not harder”

- 5 priority farms

Advancing momentum: local knowledge

- Existing relationships with farmers on 4 out of 5 priority farms



Leveraging High -resolution Data to Restore Impaired Streams

Pennsylvania's 30 by 30 rapid stream delisting strategy

The strategy is underway for 39 streams in 7 Pennsylvania counties.

Building a project portfolio toward implementing BMPs on 500 priority farms.

Bundle projects to streamline fundraising and leverage partner strengths.

- 200 farms restored
- Approximately \$12M raised
- New funding through PA DEP Growing Greener: Watershed Renaissance program

Gov. Wolf, Chesapeake Conservancy & Partners
Announce Initiative to Restore 30 Agriculturally
Impaired Streams by 2030

April 22, 2021



PHOTOGRAPHY: TORRE SPINALE

Two administration employees honored for being 'Champions of the Chesapeake'

Governor Tom Wolf marked Earth Day today by joining the Chesapeake Conservancy to announce a collaborative environmental initiative for the Commonwealth of Pennsylvania to restore the agriculturally impaired streams by 2030.

<https://www.governor.pa.gov/newsroom/gov-wolf-chesapeake-conservancy-partners-announce-initiative-to-restore-30-agriculturally-impaired-streams-by-2030/>

Next Steps for High -resolution Data Development and Applications

Short-term actions

- Promote use of existing tools
- Data roll -out and local support
- Ecosystem services for selected BMPs

Longer-term action

- Keep up the pace - policies and funding programs
- Scale strategies that are working
- Streamline existing data products





Carly Dean

Program Manager

cdean@chesapeakeconservancy.org

Joel Dunn

President and CEO

jdunn@chesapeakeconservancy.org

Susan Minnemeyer

Vice President for Technology

sminnemeyer@chesapeakeconservancy.org