



# 2022-2023 State Budget

A “Generational Investment” in Water Quality

Marel King, PA Director  
Chesapeake Bay Commission



Harry Campbell, Science Policy &  
Advocacy Director  
Chesapeake Bay Foundation

# Over \$700M in new funding

- General Fund
  - \$10 million to **Conservation District Fund**
- Oil & Gas Lease Fund
  - \$56 million for **State Park & State Forest Infrastructure** 
- American Rescue Plan\*
  - \$100 million for **State Parks & Outdoor Recreation Program** 
  - \$320 million for **water and sewer projects**
  - \$220 million for **Clean Streams Fund** 

\*ARPA money is available through 2026

# Clean Streams Fund

- \$154 million to **Agricultural Conservation Assistance Program** 
- \$22 million to **Clean Water Procurement Program** 
- \$22 million to **Nutrient Management Fund**
- \$8.8 million to **Act 167 planning**
- \$8.8 million to **Keystone Tree Account**
- \$4.4 million to **Abandoned Mine Drainage**

**\$220 million**

# Clean Water Procurement Program

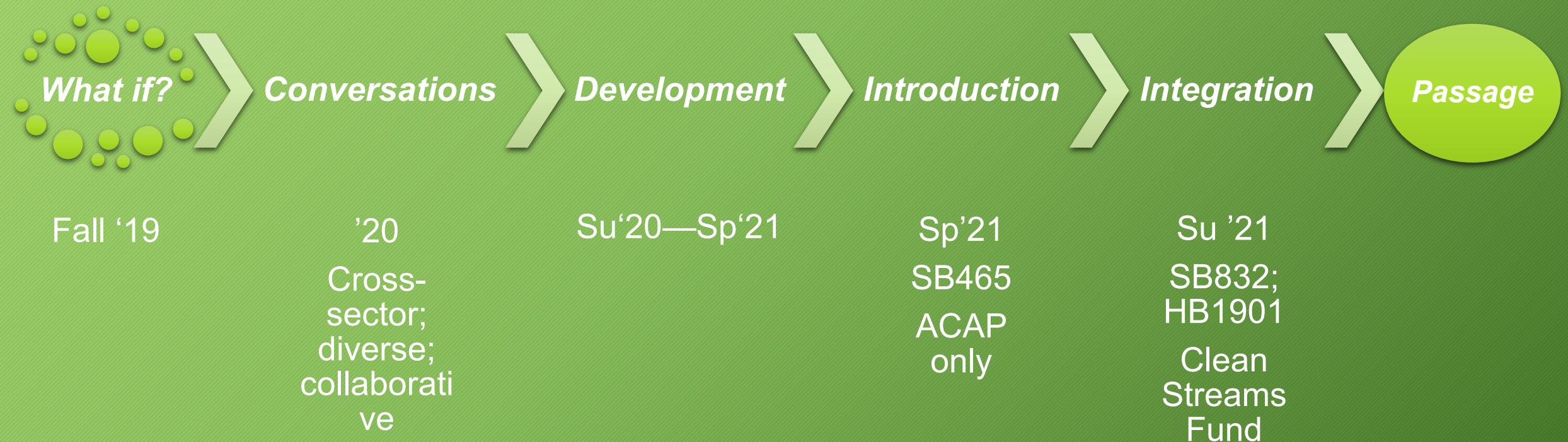
- RFP/competitive bidding process
- PENNVEST administers
  - DEP & SCC advise
  - DEP oversees verification
- Evaluation criteria include:
  - Amount and cost-effectiveness of reductions
  - Tier 1 county
  - Inclusion of small farms
  - Additional community benefits
- Contract up to ten years
- Installment payments contingent on performance targets



# Agricultural Conservation Assistance Program (ACAP)

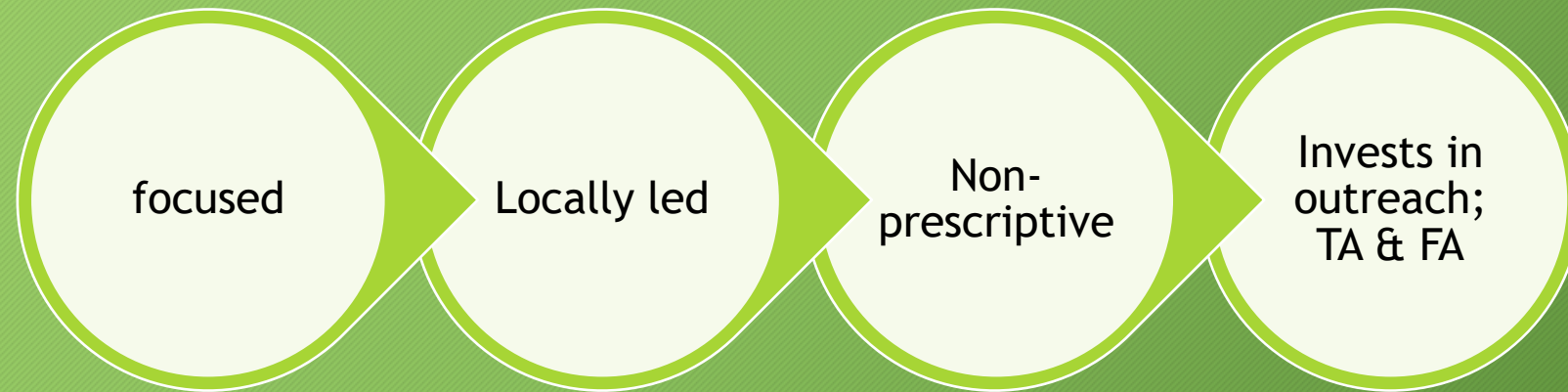


# ACAP—Idea to Initiative



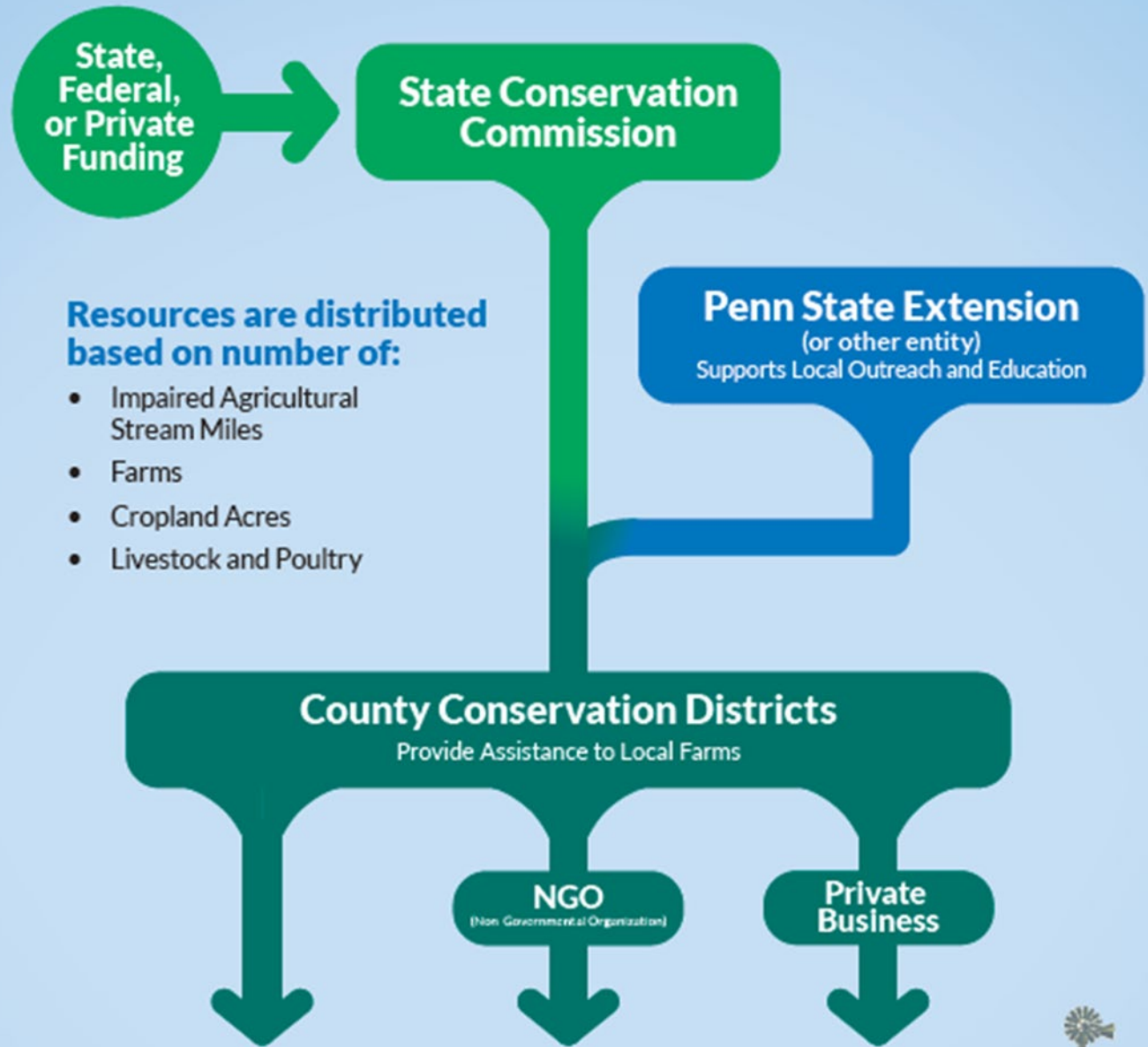


# ACAP—Core Principles



# ACAP funding to farms

## How ACAP Sets Pennsylvania Farmers up for Success





ACAP—a  
familiar  
model

# Dirt, Gravel, and Low Volume Road Maintenance Program

The [Dirt, Gravel and Low Volume Road Maintenance Program](#) is an innovative non-point source pollution control program for local municipal road officials. Under this program, the [State Conservation Commission](#) provides grant funding through county conservation districts to state and local entities to eliminate stream pollution caused by runoff and sediment from dirt, gravel and low volume roads

Eligible applicants are state and local entities that own public roads. Federal roads and privately owned roads are not eligible for grant funds.

# ACAP— Proposed County Prioritization

County	Stream miles impaired by agriculture (PADEP, Jan 21)	Cropland acres (2017 Census of Ag)	Number of farm operations (2017 Census of Ag)	Animal equivalent units (1000 lb live animal weight, estimate based on 2017 Census of Ag)
ADAMS	238.4	128,436	1,146	22,552
ALLEGHENY	41.8	15,504	389	1,880
ARMSTRONG	22.0	73,655	668	12,486
BEAVER	27.8	30,082	613	5,665
BEDFORD	251.9	119,520	1,159	39,435
BERKS	237.6	184,514	1,809	94,948
BLAIR	20.9	55,797	496	29,883
BRADFORD	76.8	183,299	1,449	48,600
BUCKS	250.3	60,015	824	7,817
BUTLER	83.3	86,232	955	13,563
CAMBRIA	78.6	50,486	557	6,827
CAMERON	0.0	1,452	37	263
CARBON	0.0	13,099	200	1,181
CENTRE	78.5	88,338	1,023	22,367
CHESTER	602.7	105,752	1,646	41,262
CLARION	56.5	52,458	594	9,837

Illustration Purposes  
Only

# ACAP— Proposed County Prioritization

Theoretical ACAP Allocation per County (total dollars)

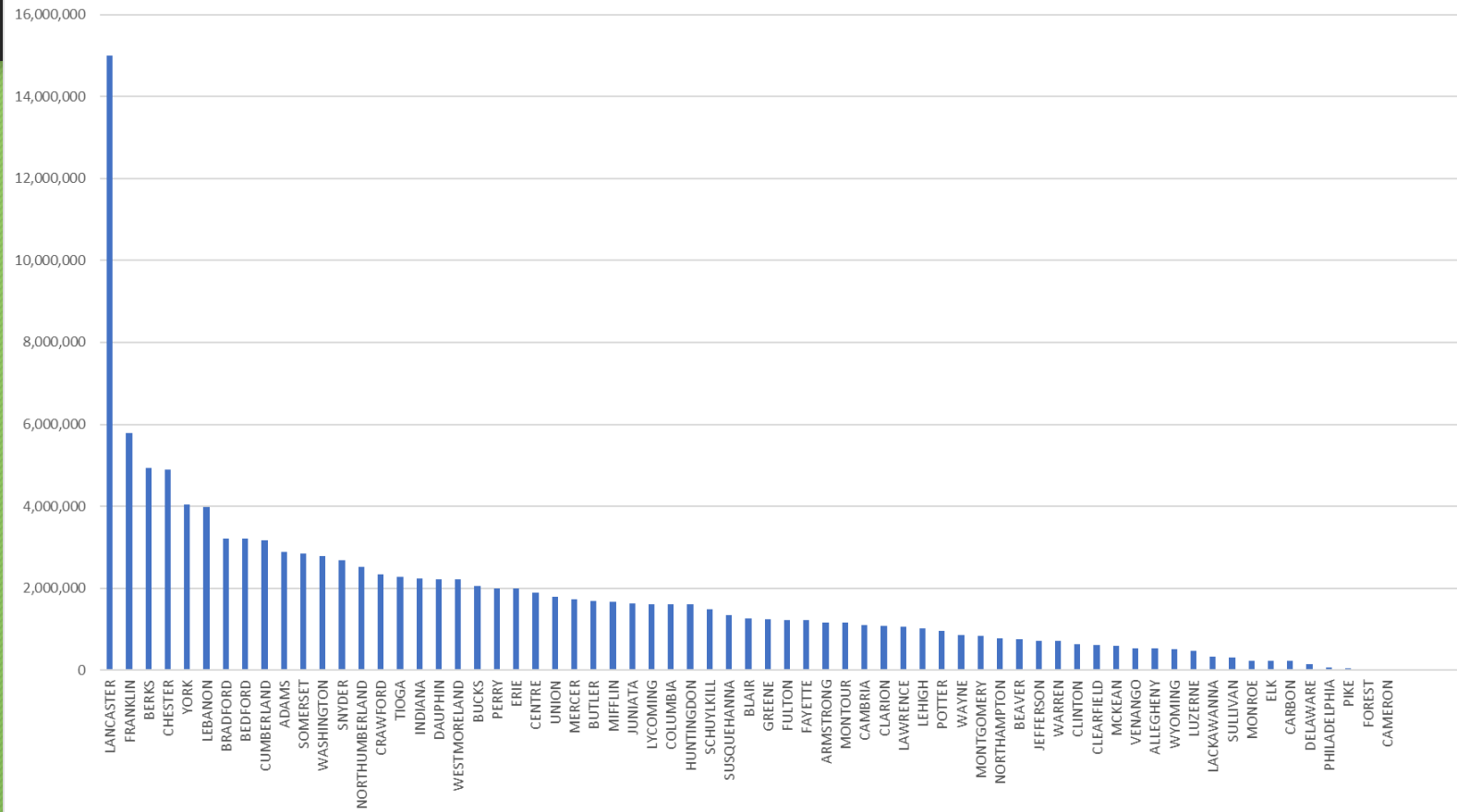


Illustration Purposes  
Only



# ACAP—Looking ahead

Looking ahead...

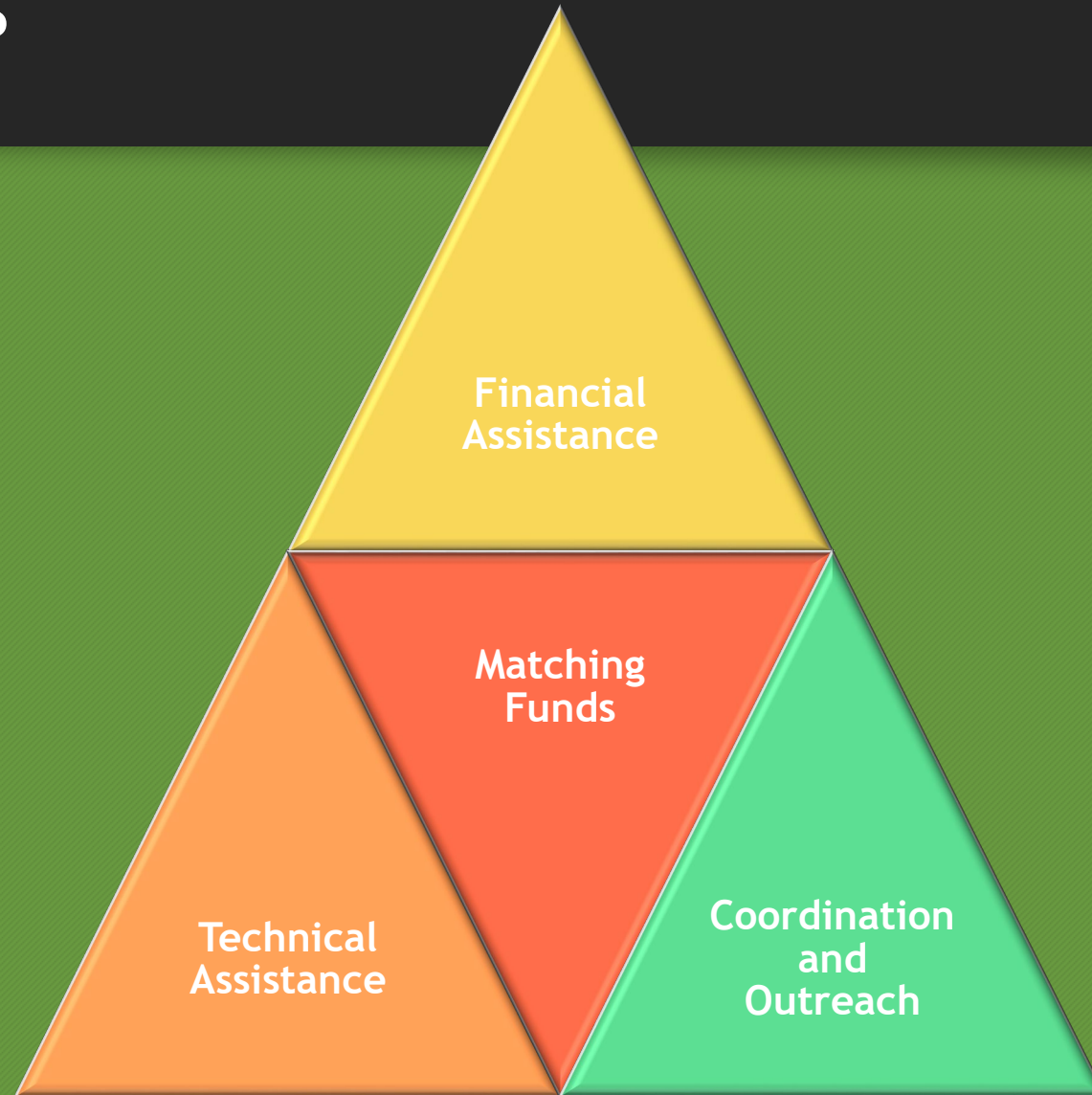
1 SCC admin

2 Promotion

3 Long-term funding

4 Collaborate & coordinate

# Next Steps



# Next Steps

