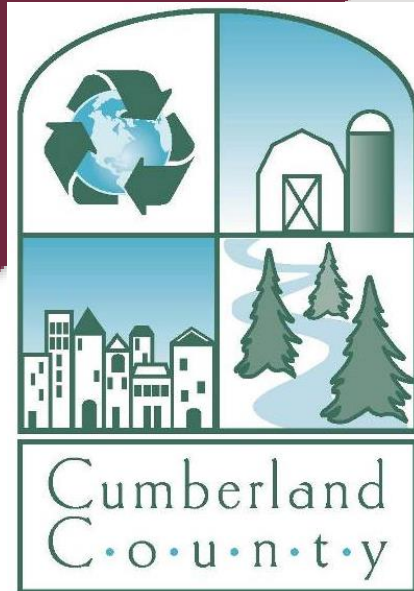


# HRG

**Herbert, Rowland & Grubic, Inc.**  
Engineering & Related Services

AN EMPLOYEE-OWNED COMPANY



# LOCAL PARTNER UPDATE – A WATERSHED GRASSROOTS APPROACH

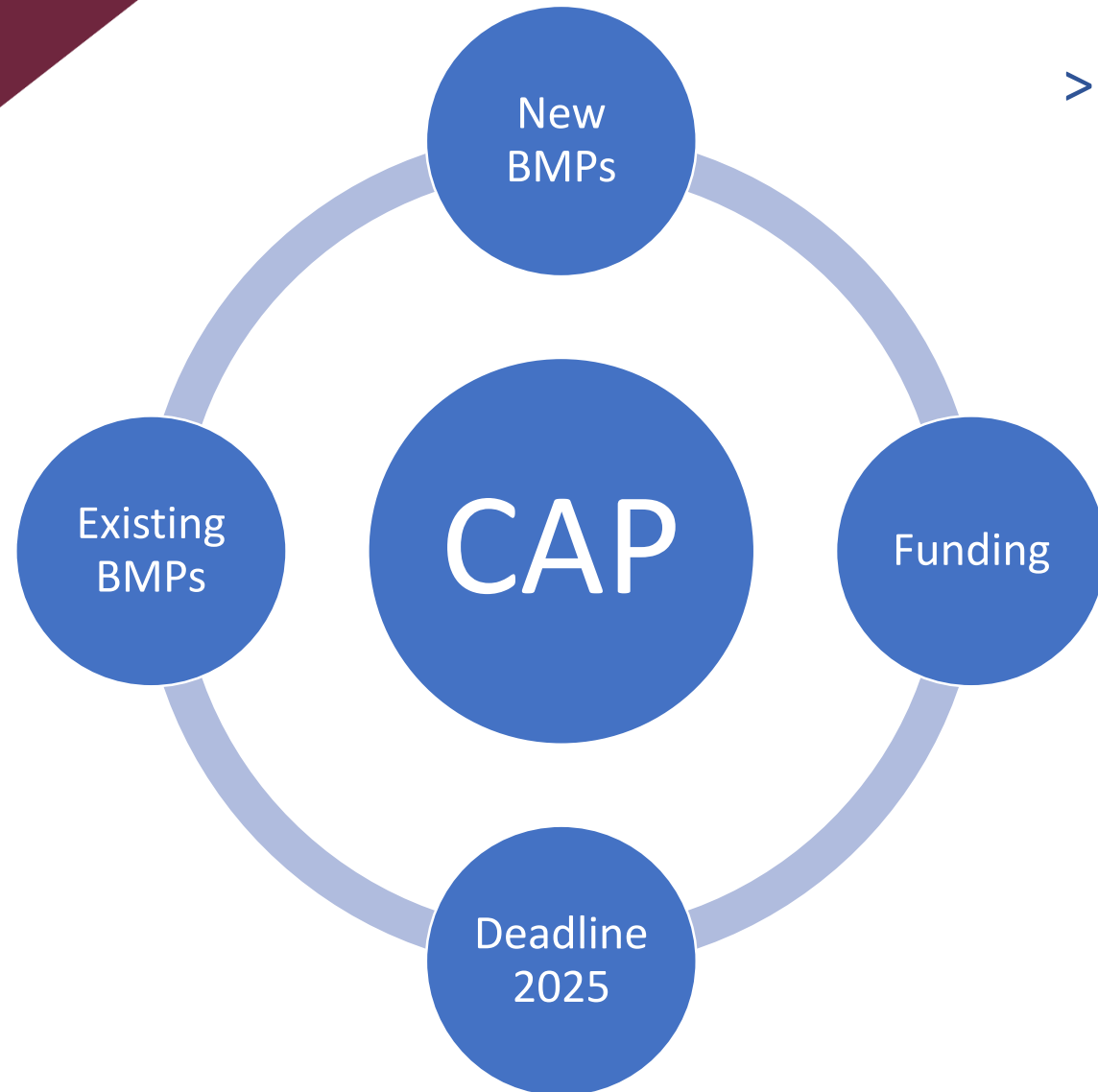
PA PHASE 3 WIP STATE TEAM MEETING

JULY 20, 2020

# INTRODUCTIONS

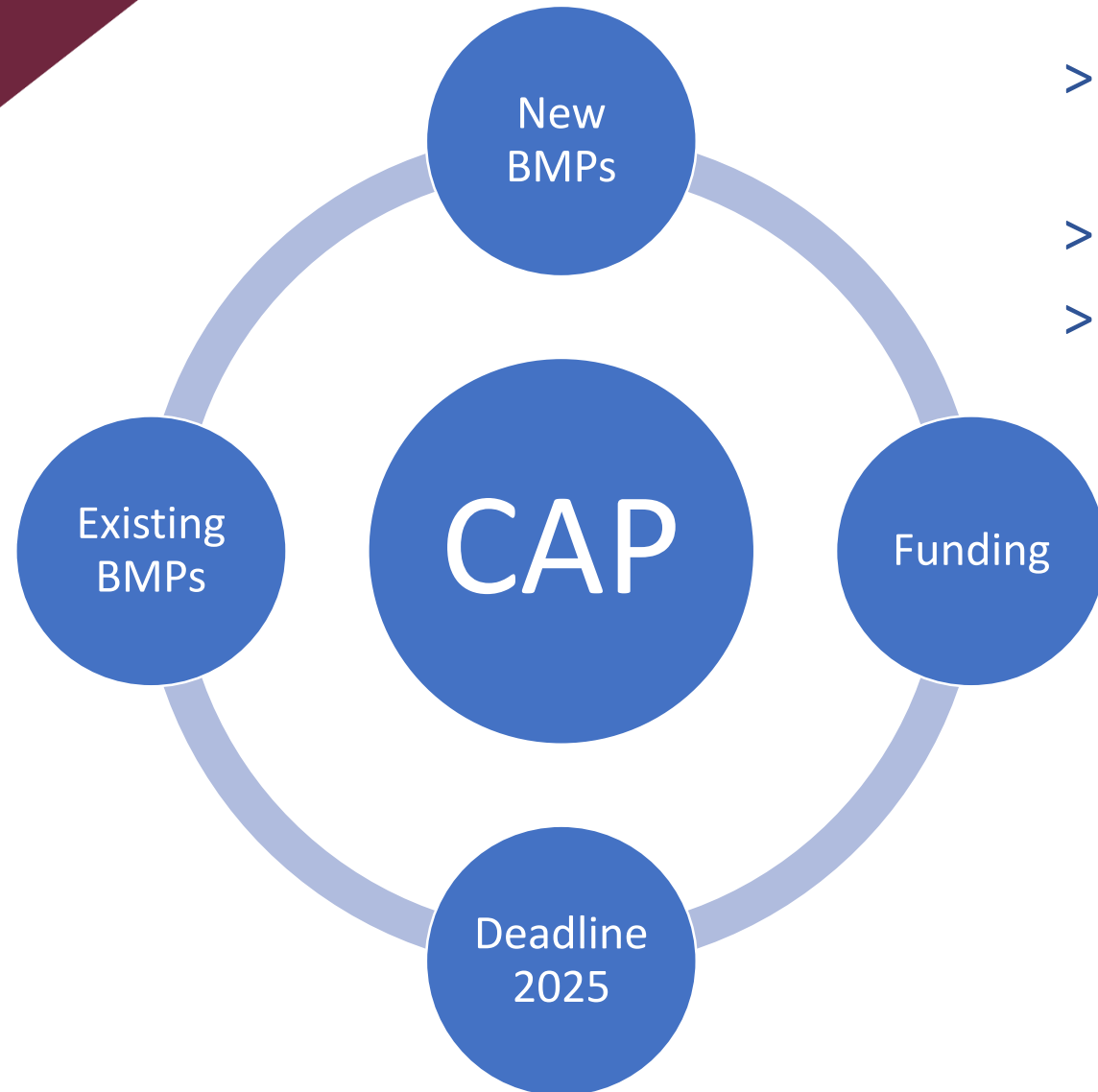
- > Elizabeth Grant, AICP
  - Cumberland County Planning Specialist
  - Former Franklin County Planner
  - 12 years experience – planning, grants and land conservation
  
- > Erin Letavic, P.E.
  - Civil engineer and project manager – stormwater/MS4 focus
  - Herbert, Rowland & Grubic, Inc. (Harrisburg, PA)
  - 16 years experience

# PROGRESS UPDATE



- > Focused on developing an implementable plan
  - BMPs that make sense
  - Funding matrix with match sources and implementation partners
  - Schedule (2025 deadline)

# PROGRESS UPDATE



- > Outreach
  - Local leader small group Zooms
- > Utilize County staff resources
- > Corridors of Opportunity
  - Highest nitrogen per catchment acre
  - Highest ag land use acre per catchment
  - MS4s
  - Stormwater fees/authorities/utilities
  - Preserved farms
  - Plain sect

# PARTNERS – WORK IN PROGRESS



Lancaster  
Farmland  
Trust



- > MS4 Workgroup (multi-county)
- > County Municipal Advisory Board
- > Master Watershed Stewards
- > South Mountain Partnership Speaker Series
- > Alliance for Aquatic Resource Monitoring (ALLARM)



SOUTH MOUNTAIN  
PARTNERSHIP



 **Pennsylvania Farm Bureau**



**PennState Extension**



**CHESAPEAKE BAY FOUNDATION**

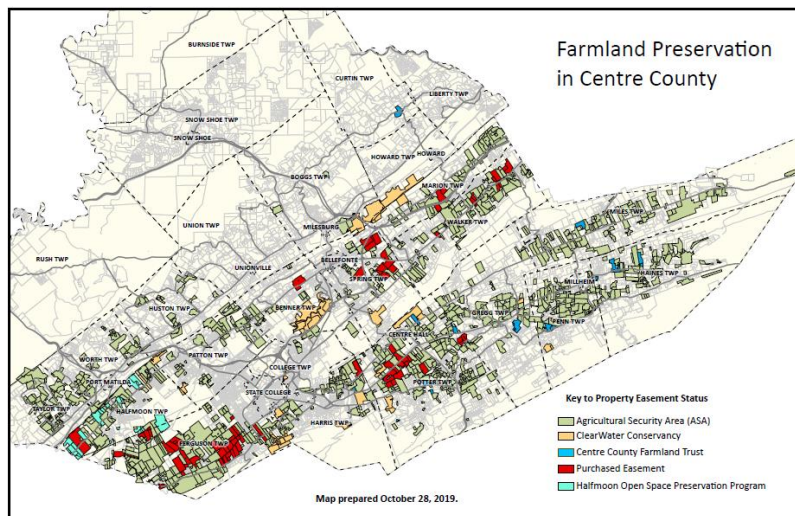
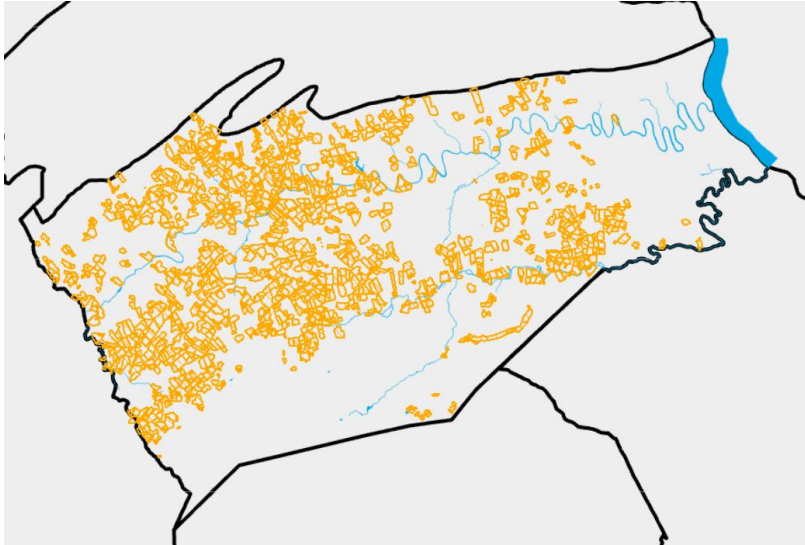
*Saving a National Treasure*



**4R MID-ATLANTIC**



# UNIQUE COUNTIES



- > Land use patterns
- > MS4s versus rural versus stormwater fees
- > Employers
- > University
- > Municipal relationships
- > Staff capacity
- > Drainage patterns
- > Water quality (nitrogen, acid mine drainage)

# CUMBERLAND COUNTY

- > Warehousing
- > Air quality
- > Farm Preservation
- > Existing farm relationships



# CENTRE COUNTY

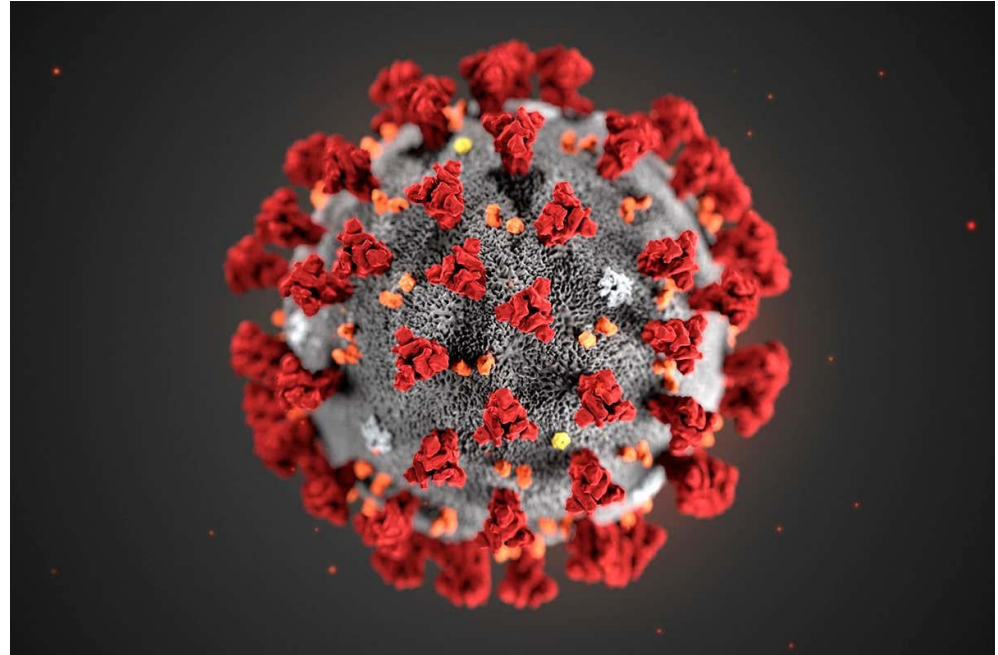
- > Penn State University
- > Only 6 MS4s
- > Communication is divided by geographic valleys
- > Acid mine drainage impacts





# COVID CHALLENGES

- > Reaching agricultural community virtually
- > Staff capacity (furloughs)
- > More structured dialogue – fewer chance interactions



# COVID OPPORTUNITIES

- > Grassroots approach
- > Watershed-level engagement
- > Leverage existing organizational missions



# PILOT VERSUS TIER 2 PLANNING

## Pilot Planning Experience



- > Staffing capacity issues
- > Unclear roadmap, uncertain flexibility (formerly, the rules were the rules and now we can suggest changes?)
- > Planning versus action challenges
- > Larger-scale analysis than normal
- > Confusion over WIP and MS4
- > Received goal recommendations at the end of the process

# PILOT VERSUS TIER 2 PLANNING

## Tier 2 Experience



- > Programmatic recommendations are being followed through on
- > Funding for coordinator (A+)
- > Data resources and management (FieldDoc), website dashboard, storymaps
- > Communications resources
- > Chesapeake Bay Office team – dedicated team complements our dedicated team

# WE NEED YOUR CONTINUED SUPPORT!

- > Funding
- > MS4 flexibility
- > Grassroots participation

