

LACKAWANNA COUNTY CLEAN WATER TECHNICAL TOOLBOX

**Developing a County-Based Action Plan for Clean
Water**

October 2020



LACKAWANNA COUNTY TECHNICAL TOOLBOX

Pennsylvania Phase 3 Watershed Implementation Plan (WIP)

The Local Planning Process to Meet Countywide Goals

Introduction

Welcome to your Clean Water Technical Toolbox.

This document has been prepared to help you improve local water quality. This collaborative effort is being made throughout Pennsylvania's portion of the Chesapeake Bay Watershed. Each Pennsylvania county within the watershed will have a Technical Toolbox with similar components tailored to that county's specific conditions.

What is the Technical Toolbox?

This toolbox has been developed as a starting point for each county to use to improve local water quality. It contains useful and specific data and information relevant to your county to assist you with reaching local water quality goals.

No county is required to use every tool in this toolbox! You are encouraged to add other tools as fits your local situation. This toolbox serves as a *guide* to assist with collaborative efforts, *not* as a regulatory tool.

Pennsylvania's Phase 3 WIP state workgroups have developed a series of recommendations that can apply across the watershed. These recommendations, found in Appendix I, are to be used as a starting point for your county. You can use these recommendations to develop your Countywide Action Plan, or you may want to adjust the recommendations based on your county's needs as you develop your Countywide Action Plan.

The Local Story: Opportunities to Improve Local Water Quality and Meet Countywide Goals

Information is available that can help inform local planning strategies. This information can help answer questions like:

- How is the water quality in my area?
- What are important sources of nutrient and sediment pollution in my area?
- What opportunities exist to address these sources of pollution?
- Where geographically should we focus our efforts?
- How do I begin identifying potential reduction strategies?

This Technical Toolbox provides information to help answer those questions and to tell the story of local water quality in your county. In this Technical Toolbox, you'll find information on local water quality, local sources and drivers of nutrients and sediments, best management practice information, and additional available resources.

The Technical Toolbox and the technical assistance provided to you are meant to act as a starting point to help answer some common questions that arise during planning. Local groups can utilize whichever pieces of information they find most useful, supplemented with their own local knowledge, and use the additional resources listed to find more information. The technical support team assigned to each county, will help in answering your questions and provide assistance in filling out a Detailed BMP Entry Template.

We hope this Technical Toolbox gives you a foundation to build off of when telling your county's local story and in identifying opportunities for meeting local pollution reduction goals.

Lackawanna County's Clean Water Goal

Figure 2. Countywide Goal for Lackawanna County

Year	Nitrogen (pounds/year)	Phosphorus (pounds/year)
	Delivered to Local Lackawanna County Waterways	Delivered to Local Lackawanna County Waterways
1985	3,076,000	473,000
2019	2,886,000	207,000
2025 (Final TMDL Planning Target)	2,127,000	177,000
Remaining Load to be Achieved Through Local Planning Goals	759,000	30,000

The monitored nitrogen and phosphorus load for Lackawanna County (above) are broken down into nitrogen and phosphorus goals. The top line represents the conditions of Lackawanna County in 1985. The second line, 2019, represents the current conditions in Lackawanna County. The third line represents the planning goal that Lackawanna County is trying to achieve by 2025. The last line represents the total reduction in pounds that Lackawanna County needs to reduce by 2025.

Lackawanna County needs to reduce its current nutrient pollution by 759 K pounds of nitrogen and 30 K pounds of phosphorus. Lackawanna County has made great progress since 1985 in reducing the amount of Phosphorus to local waterways, but still needs more reductions to meet the 2025 goal. There is a lot of work that needs to be done with nitrogen. Through the planning process the counties goal is to completely reduce the reductions needed by 2025, for both nitrogen and phosphorus. This may take a combination of state and local efforts.

The Loads Report above can be found on CAST at <http://cast.chesapeakebay.net>. Log in and click on Reports' tab; Report type: loads report, Geographic Scale: county-area in CBWS only, Geographic Area: select Lackawanna County, Scenarios: 2019 Progress

A Summary of Lackawanna County's Water Quality Story

Current Conditions of Lackawanna County's Streams

- Monitoring shows that streams in Lackawanna County have elevated amounts of nitrogen, phosphorus and sediment.
- Water quality in Lackawanna County's streams is changing over time:
 - Of the 641 miles of streams in Lackawanna County, approximately 22% are degraded, which means they do not meet water quality standards
 - Lackawanna County has many waters listed as impaired, but only a few streams within the county have individual TMDLs.

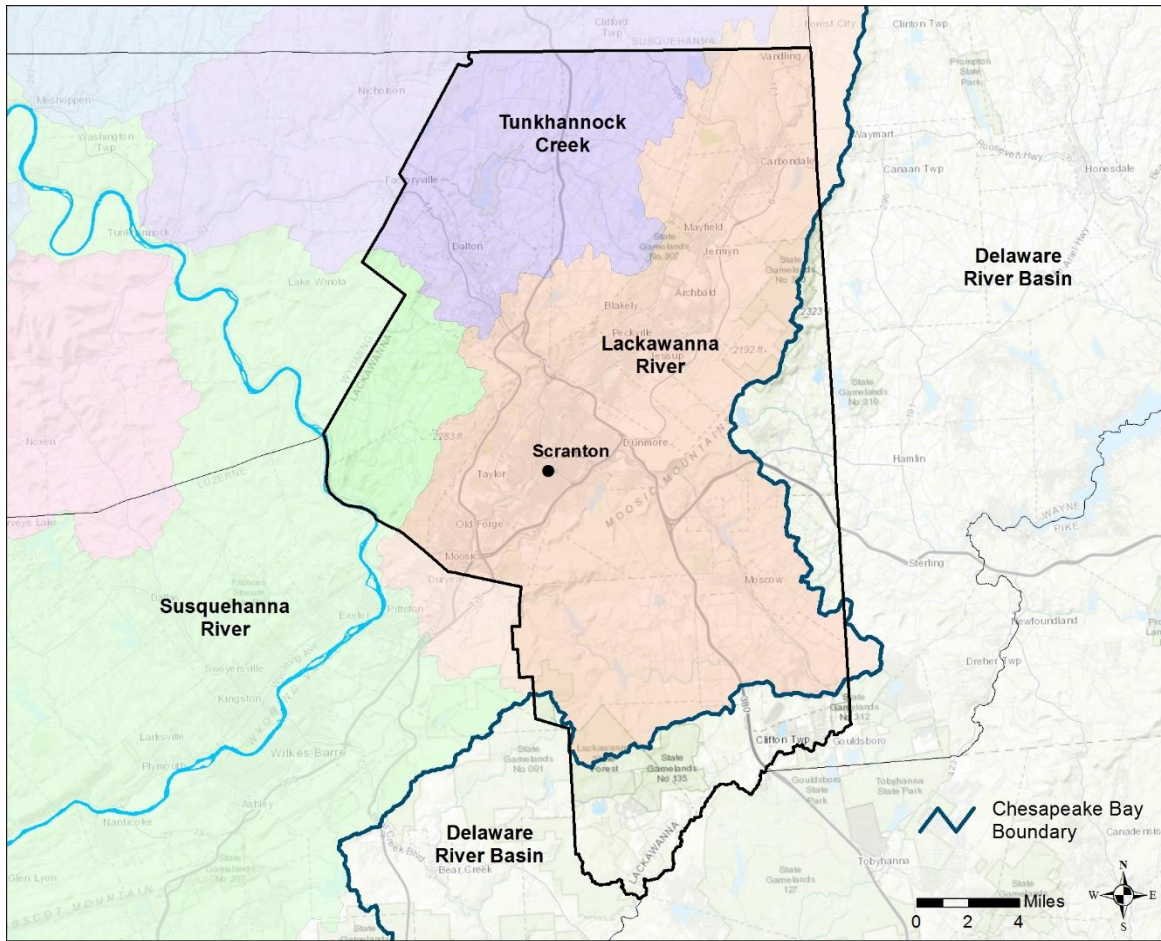
Sources of Nutrients & Sediment in Lackawanna County

- It is estimated that most nutrients and sediment in Lackawanna County streams comes primarily from wastewater sources (43%). Developed/urban (22%) and agriculture (16%) also make up a significant portion of the total controllable load, which can be addressed through management actions.
- Effective management will address the specific sources of nutrients and sediment in Lackawanna County:
 - On agricultural lands, the majority of nutrients are applied to the land as both fertilizer (71%) and manure (26%). Addressing both sources will be important.
 - On developed/urban lands, more than half of the nutrients entering local streams come from outside of the MS4 areas (63%) (regulated municipal separate stormwater sewer system). Turf grass or grassy areas in Lackawanna County are responsible for more than half of the nutrient load (55%) and will be important to manage in both MS4 areas and outside of MS4 areas.
 - Areas outside of MS4s may require outreach, financial programs etc. to address the problems.
 - Wastewater contributes a significant amount (43%) of the nitrogen load in Lackawanna County, and has been recently reduced. There still is great opportunity for additional reductions.
 - Septic contributes a small portion of nutrients to local streams but may still impact local water quality.
 - Most of the phosphorus and sediment in local streams comes from overland runoff or streambank erosion during rain events; the most effective management practices reduce application of phosphorus to the land, reduce runoff, and reduce soil erosion.
 - In both agricultural and developed/urban areas, erosion of stream banks are important sources of sediment and nutrients to local streams.

Opportunities for Implementation in Lackawanna County

- The Lackawanna River HUC-12 is the highest loading watershed for Nitrogen, and Phosphorus. These watersheds would be ideal watersheds to prioritize efforts.
- Grassy Island Creek and Upper South Branch Tunkhannock Creek are also two of the higher loading watersheds within Lackawanna County. These watersheds would be a good place to prioritize efforts to reduce nutrients and sediment.
- The Lackawanna River Watershed contains a majority of the county's impaired stream miles.
- Some effective practices to address nutrients and sediment are currently being implemented in Lackawanna County, such as conservation tillage and barnyard runoff control.
- There are many more opportunities within the county to increase implementation of effective practices such as basic and advanced nutrient management, cover crops, grass and forest buffers in agricultural areas, stormwater controls, and urban nutrient management in developed areas.

Lackawanna County's Local Watersheds



The following pages provide in-depth information on local water quality in Lackawanna County's monitored watersheds.

Water Quality Monitoring

The overall objective of the WIP is improving Chesapeake Bay health. However, Pennsylvania is much more focused on improving local water quality in our local communities, which in turn will improve the waters of the Chesapeake Bay.

With this focus, it is important to utilize the most appropriate water quality monitoring data for each county or region. Below are some resources that can provide information on the local rivers and streams in your area. While these resources are often robust, they are not the only data available and local partners are encouraged to incorporate other local water quality monitoring efforts in this planning phase as well.

Throughout the county WIP planning stage, these data resources may provide important information stakeholders may need.

Chesapeake Bay Non-tidal Monitoring Network (NTN)

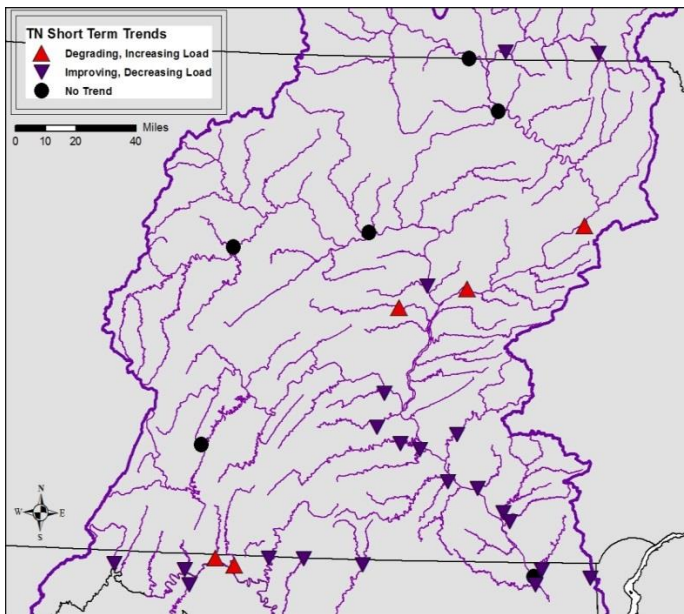
The United States Geological Survey (USGS), Susquehanna River Basin Commission (SRBC), Pennsylvania Department of Environmental Protection (DEP) and other state partners across the Chesapeake Bay watershed, monitor water quality at 123 stations. Changes in nitrogen, phosphorus, and suspended-sediment loads in rivers across the Chesapeake Bay watershed have been calculated using these monitoring data. Nutrient and sediment loads are calculated with at least five years of monitoring data, and trends are reported after at least ten years of data collection.

This data set is very robust. Though all counties may not have a long-term monitoring station within the county boundary, the nearest downstream station gives a regional picture of the current status and historical trends for nutrients and sediment.

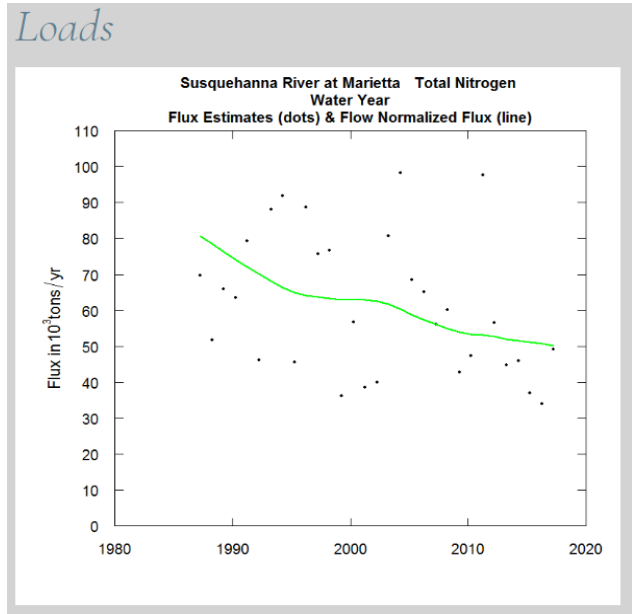
This data set is used to help calibrate the Chesapeake Bay Watershed Model which is the source of much of the information in the remainder of the toolbox.

Additional information for each monitoring station is available at:

- USGS Chesapeake Bay Non-tidal Website: <https://cbrim.er.usgs.gov/summary.html>
 - Interactive Map- <https://cbrim.er.usgs.gov/maps/>
- SRBC Sediment and Nutrient Assessment Program: <https://www.srbc.net/portals/water-quality-projects/sediment-nutrient-assessment/>



Nitrogen trends map from USGS



Historical Nitrogen Load from Susquehanna River at Marietta, Pa.

Pennsylvania Water Quality Network (WQN)

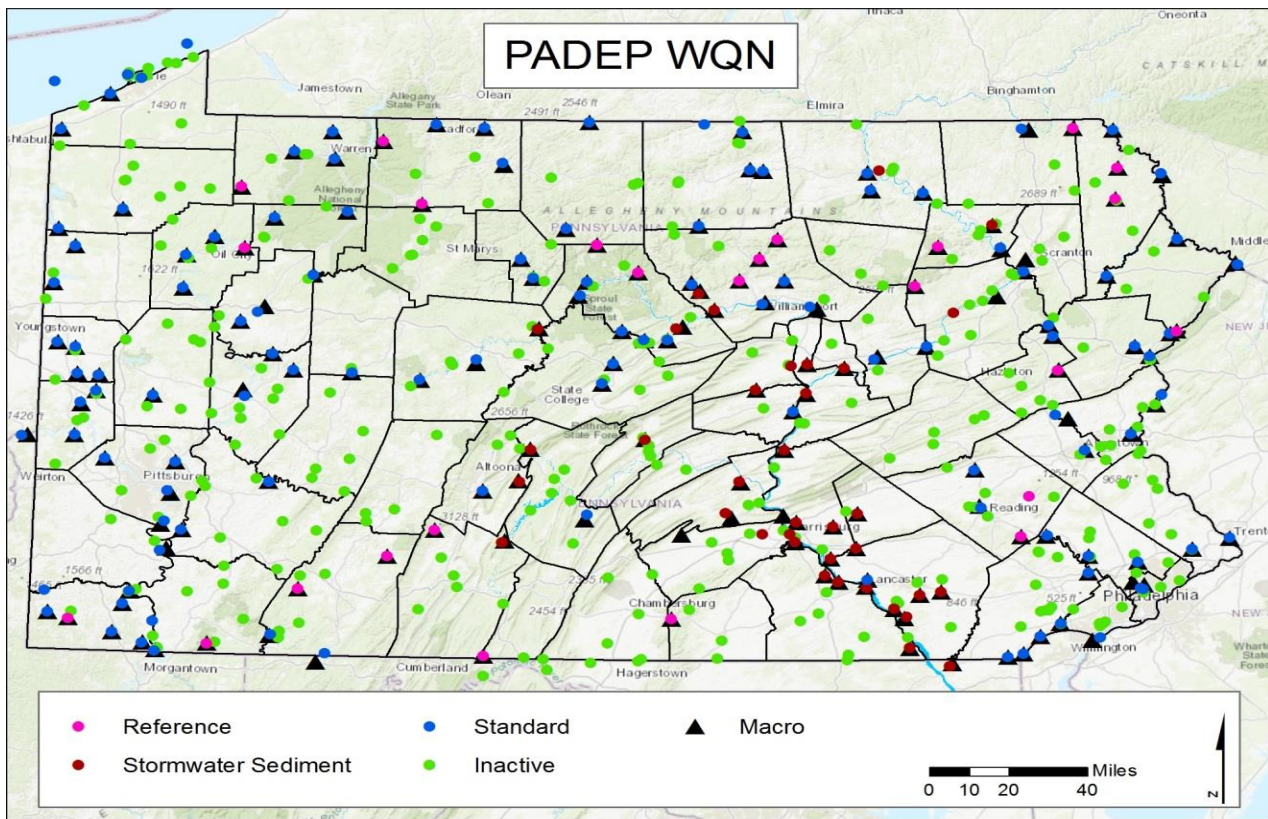
The Pennsylvania Water Quality Network (WQN) is a statewide, fixed station water quality sampling system operated by the PA Department of Environmental Protection's (DEP) Bureau of Clean Water. It is designed to assess both the quality of Pennsylvania's surface waters and the effectiveness of the water quality management program by accomplishing four basic objectives:

- Monitor water quality trends in major surface streams throughout the Commonwealth of Pennsylvania
- Monitor water quality trends in select reference waters
- Monitor the trends of nutrient and sediment loads in the major tributaries entering the Chesapeake Bay
- Monitor water quality trends in select Pennsylvania lakes

Some of these stations are also included in the NTN network, however there are many additional monitoring stations that are sampled at a different frequency than the NTN stations.

Additional information and access to the data can be found here:

<http://www.depgis.state.pa.us/WQN/>

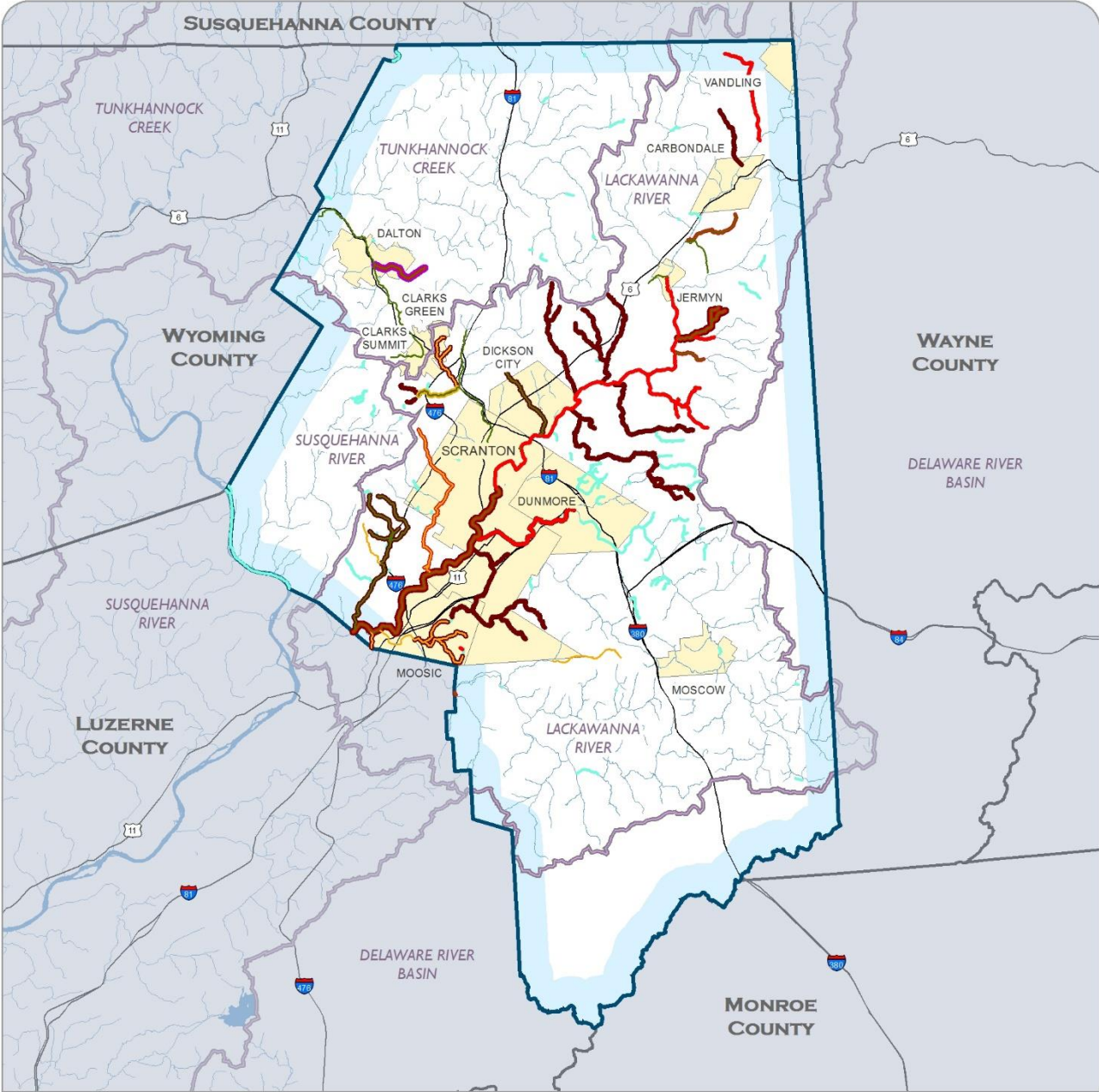


Additional Water Quality Data Sources-

There are additional data resources that may help to target efforts to local streams. Macroinvertebrate data and Continuous In-stream Monitoring (CIM) data are extensively collected across Pennsylvania to both assess and monitor stream health. Below are some additional resources to find this data:

- PADEP Macroinvertebrate Story Map and Data Viewer
 - <http://www.depgis.state.pa.us/macroinvertebrate/index.html>
 - Contains macroinvertebrate information, and scores as well as a viewer for accessing water quality data.
- National Water Quality Portal (USGS, U.S. EPA, National Water Quality Monitoring Council)
 - <https://www.waterqualitydata.us/>
 - Contains national water quality data; can be searched by county/region and downloaded.
- Susquehanna River Basin Commission Water Quality Portal
 - <https://mdw.srbc.net/waterqualityportal>
 - Contains water chemistry, macroinvertebrate, fish and habitat data across the Susquehanna River Basin.
- Susquehanna River Basin Commission Continuous Instream Monitoring (CIM) data
 - https://mdw.srbc.net/remotewaterquality/data_viewer.aspx
 - Contains CIM data including temperature, pH, conductance, dissolved oxygen and turbidity, along with additional parameters collected quarterly.
- Chesapeake Monitoring Cooperative Data Explorer
 - <https://cmc.vims.edu/#/home>
 - Contains volunteer and non-traditional (i.e. municipal) water quality and macroinvertebrate monitoring data collected throughout the Chesapeake Bay Watershed.

Impaired Waterways in Lackawanna County, PA, 2020



Impaired Waterway Miles by Type within the Chesapeake Bay Watershed*

- Disturbance - 79 mi.
- Nutrients - 2 mi.
- Siltation - 52 mi.
- Other - 23 mi.
- Metals - 52 mi.

*DISCLAIMER: Depicts aquatic life assessment category by cause of impairment. Impaired miles in legend may include duplication.

Unassessed Stream 40 mi.	Major Watershed	Major Road	Lackawanna County
River/Stream 641 mi.	Water Body	County Boundary	City/Town



SOURCE: Impaired Streams, 2020 Integrated List from PADEP
 DISCLAIMER: Use of Map for Any Purpose on "As Is" Basis, No Warranties Provided. SRBC (1633p) 04-29-2020



Of Lackawanna County's 641 stream miles, approximately 22% have degraded aquatic communities due to causes such as disturbance, siltation (excessive sediment), metals, nutrient pollution and others. An additional 6% of the streams have not been assessed.

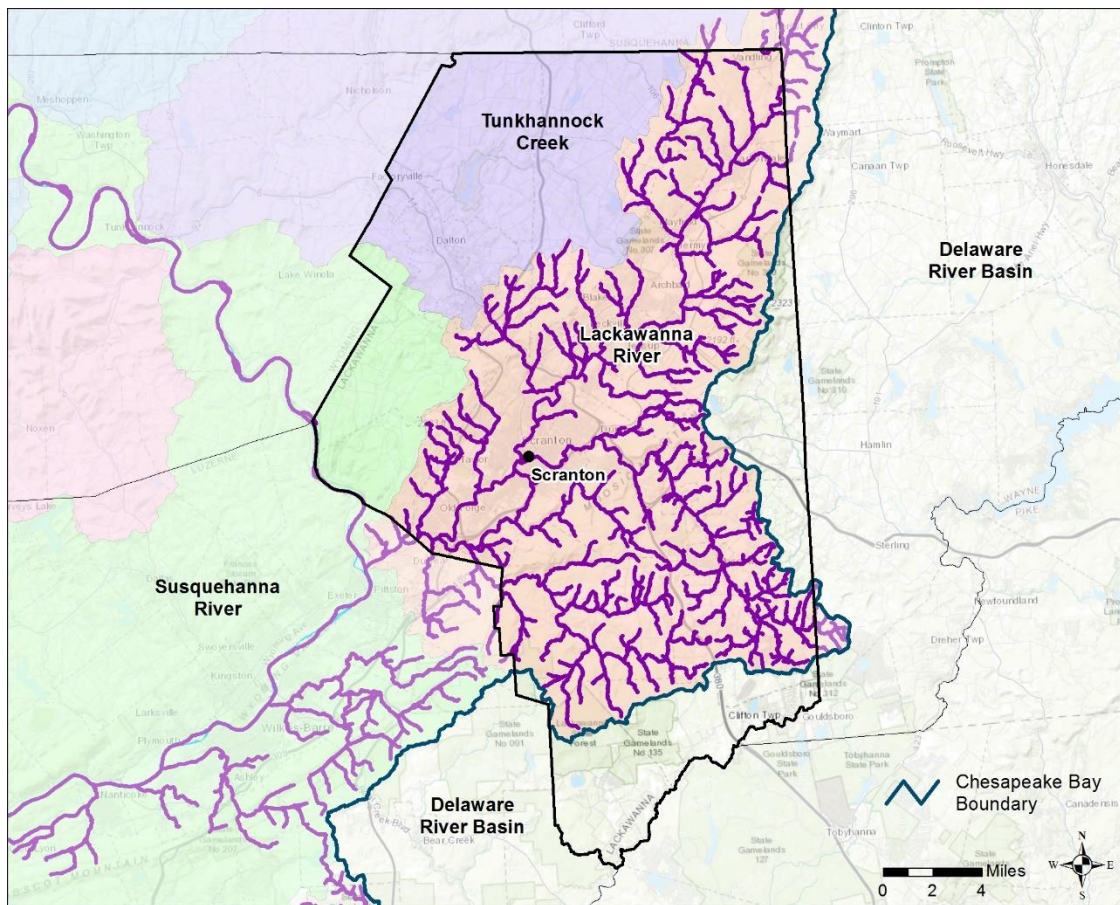
Knowing the sources of these impairments helps to prioritize or coordinate efforts.

- For example, many agricultural practices that address nutrients can also address siltation impairments from sediment.
- Many urban/developed practices that address nutrients and sediment also address the same causes of pathogen impairments.
- Focusing efforts geographically in areas with impaired streams can help address local issues.

Local impaired waters listed on the 303(d) list can be found at PADEP:

<https://www.dep.pa.gov/Business/Water/CleanWater/WaterQuality/IntegratedWatersReport/Pages/default.aspx>.

Local restoration efforts will help Lackawanna County's watersheds.



While many waters are listed as impaired, only some of these impairments are being addressed through regulatory Total Maximum Daily Loads (TMDLs).

Local groups may want to coordinate restoration efforts to focus on the watersheds that already have these local TMDLs. Major watersheds with TMDLs in Lackawanna County:

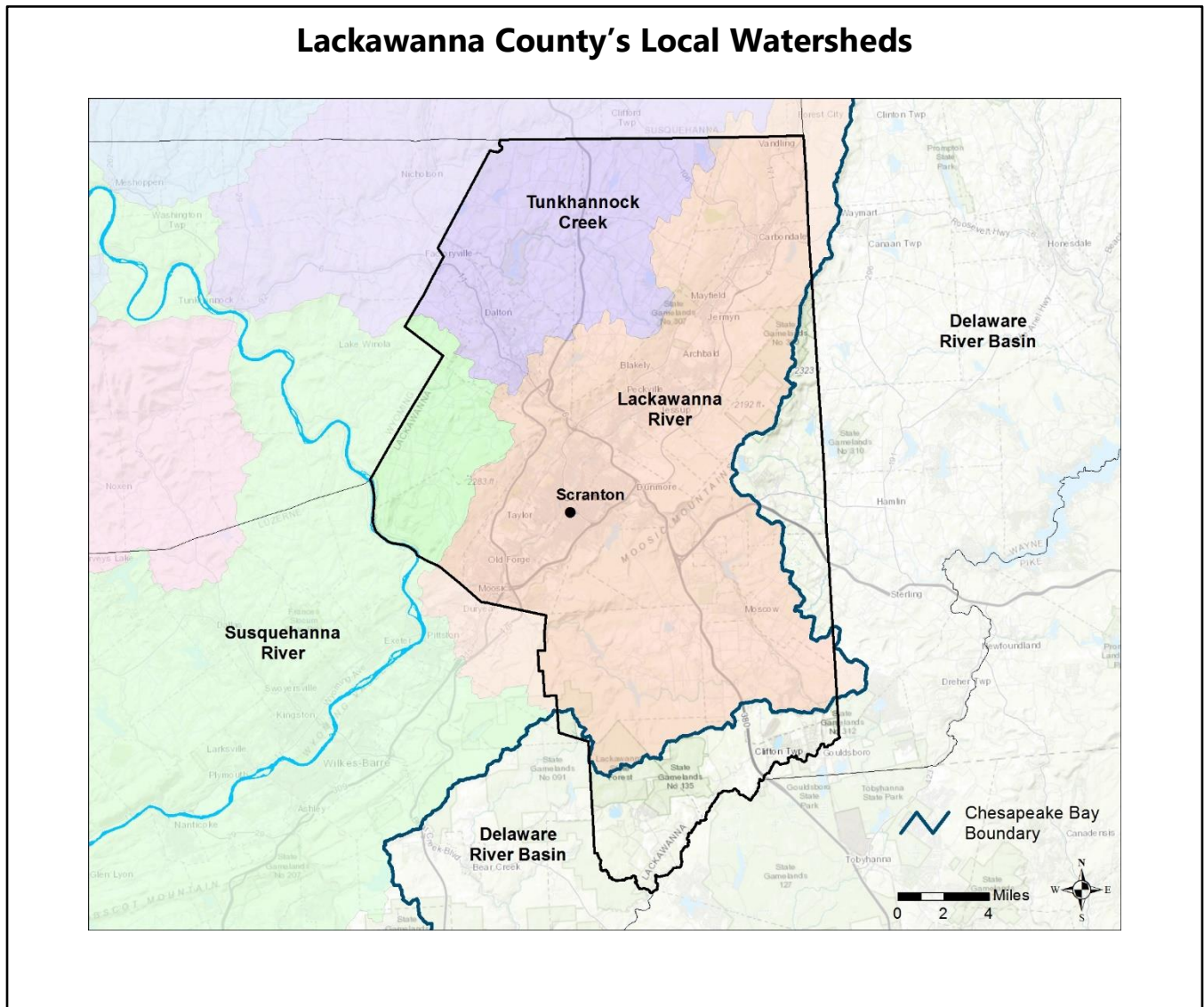
- Lackawanna River

Local impaired waters listed on the 303(d) list that have TMDLs can be found at PADEP:

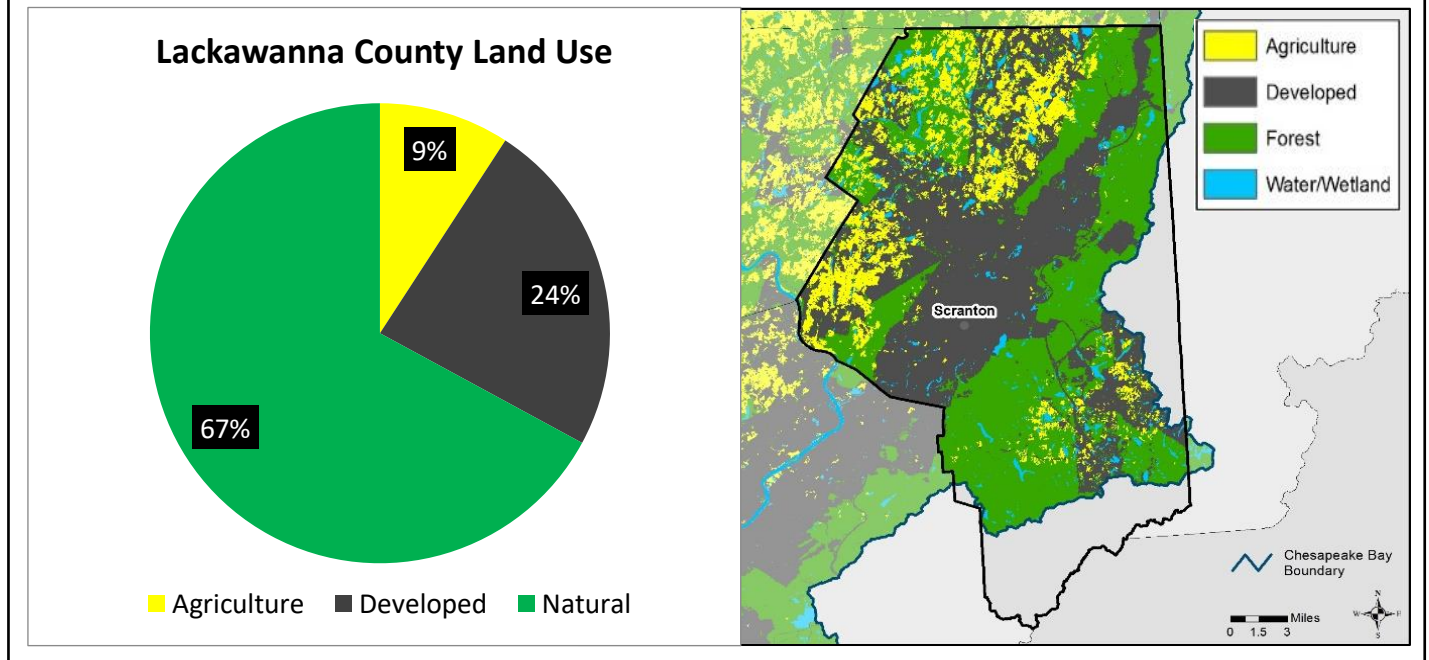
<https://www.dep.pa.gov/Business/Water/CleanWater/WaterQuality/IntegratedWatersReport/Pages/default.aspx>.

TMDL reports can be found at PADEP: <http://www.ahs.dep.pa.gov/TMDL/>

Sources of Nutrients and Sediment in Lackawanna County



Water Quality is Strongly Tied to Land Use



Lackawanna County has challenges in restoring water quality.

- The pie chart above shows the breakdown of land uses in Lackawanna County. Only 33% of the county is agricultural or developed land.
- The map above shows the geography of land uses, specifically illustrating the concentrated agricultural and developed areas.
- Agricultural and developed land generates more nutrients and sediment than forested land.

High resolution land-use for the Chesapeake Bay watershed is available from USGS and the Chesapeake Bay Program at: <https://chesapeake.usgs.gov/phase6/map/>

The map above is from Falcone, J.A., 2015, U.S. conterminous wall-to-wall anthropogenic land use trends (NWALT), 1974–2012: U.S. Geological Survey Data Series 948, 33 p. plus appendixes 3–6 as separate files, <http://dx.doi.org/10.3133/ds948>.

The breakdown of land use by county can be found on CAST at <http://cast.chesapeakebay.net>. Log in and click on reports' tab; Report type: loads report, Geographic Scale: county-area in CBWS only, Geographic Area: select Lackawanna County, Scenarios: 2019 Progress

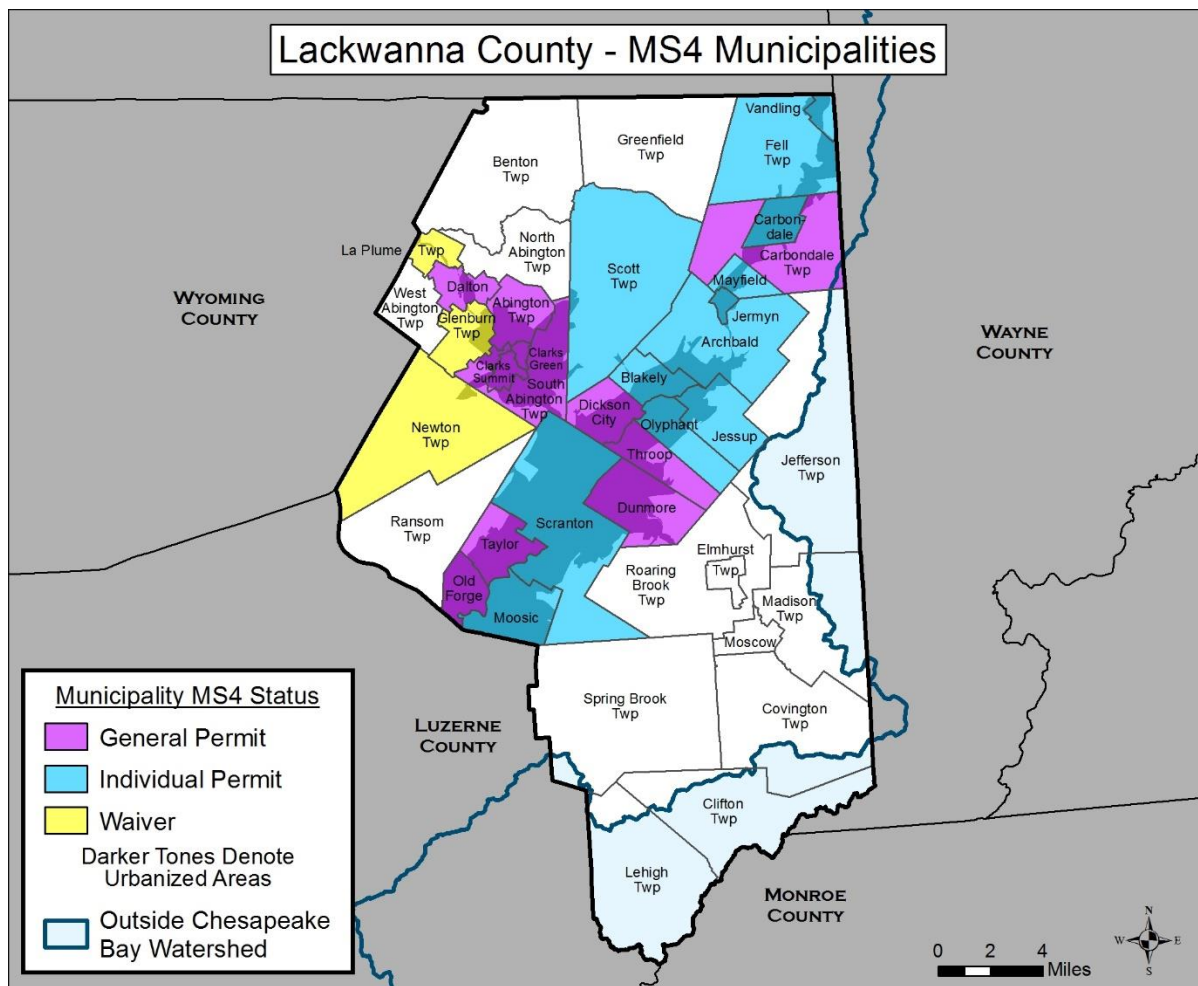
Land Use Breakdown in Lackawanna County

Sector	Load Source	2019 Acres Available	2025 Acres Available
Agriculture	Feeding Space	24	21
Agriculture	Hay	9,162	7,692
Agriculture	Pasture	5,430	4,831
Agriculture	Row Crops	6,999	6,907
Agriculture	Other Ag	1,579	1,773
Developed	Construction	160	201
Developed	Pervious Developed	36,899	37,620
Developed	Impervious Developed	22,905	23,181
Natural	Forest	140,354	140,780

The numbers listed above show the projected sector growth within Lackawanna County between 2019 and 2025. These numbers are based on data obtained from the U.S. population census, Census of Agriculture, reported construction and land use mapping. Using this data, CAST can project changes to land use acres that can help to inform local planners and assist with accounting for local sector growth.

The available acres in 2025 will influence the quantity of BMPs that can be put into CAST. These numbers are intended to help identify the potential in Lackawanna County. Land conservation practices that conserve farmland and forest can help to offset the impact of development but may not be feasible for your county. Forested land generates less nutrients and sediment than developed land.

Additional breakdowns for each of the categories can be found at <http://cast.chesapeakebay.net/>. Log in and click on the reports' tab; Report Type: loads report, Geographic Scale: county-area in CBWS only, Geographic Area: select Lackawanna County, Scenarios: 2019 Progress



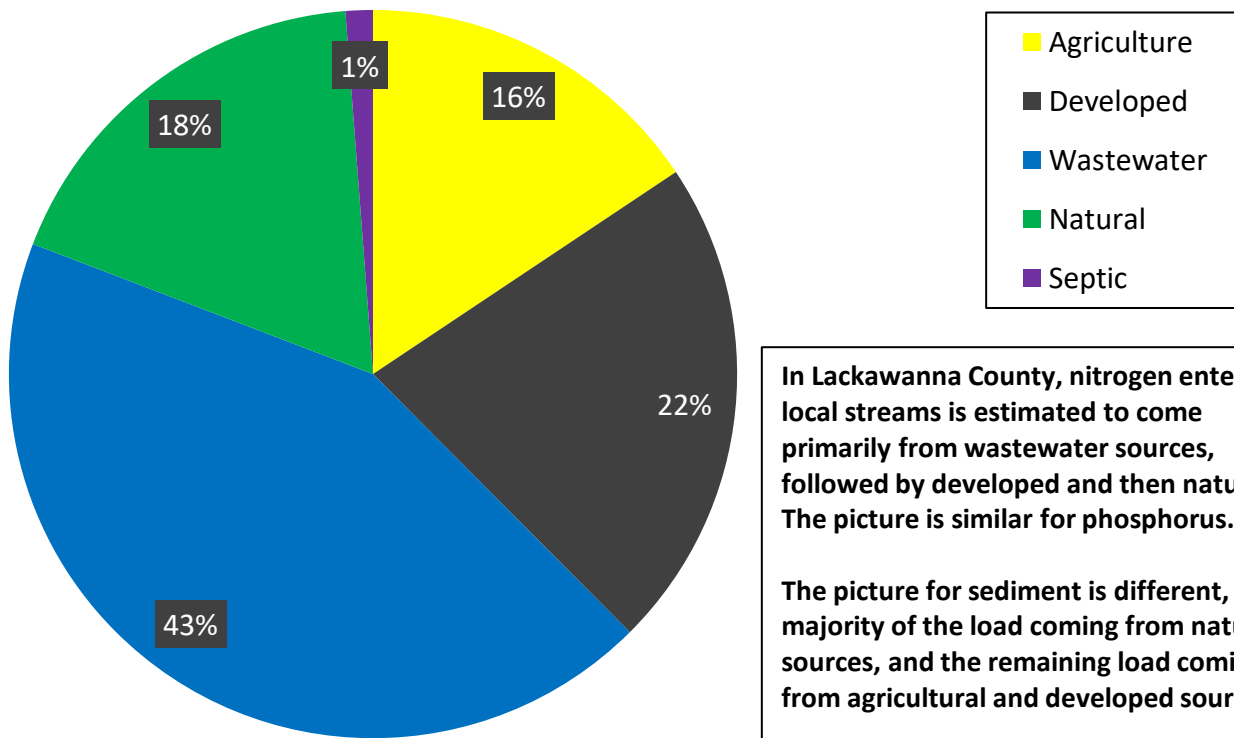
Municipal separate storm sewer systems (MS4s) are identified above in Lackawanna County.

Municipalities and other entities that meet certain standards must obtain NPDES permit coverage for discharges of stormwater from their municipal separate storm sewer systems (MS4s). MS4s must apply for NPDES permit coverage or a waiver if they are located in an urbanized area as determined by 2010 Census data.

More information can be found here-

<http://www.dep.pa.gov/Business/Water/CleanWater/StormwaterMgmt/Stormwater/Pages/default.aspx>

Lackawanna County - Nitrogen Delivered to Streams by Sector



The pie chart above shows the percentage of nitrogen delivered to local streams based on land use or activity. Most nitrogen entering local streams in Lackawanna County comes from wastewater sources.

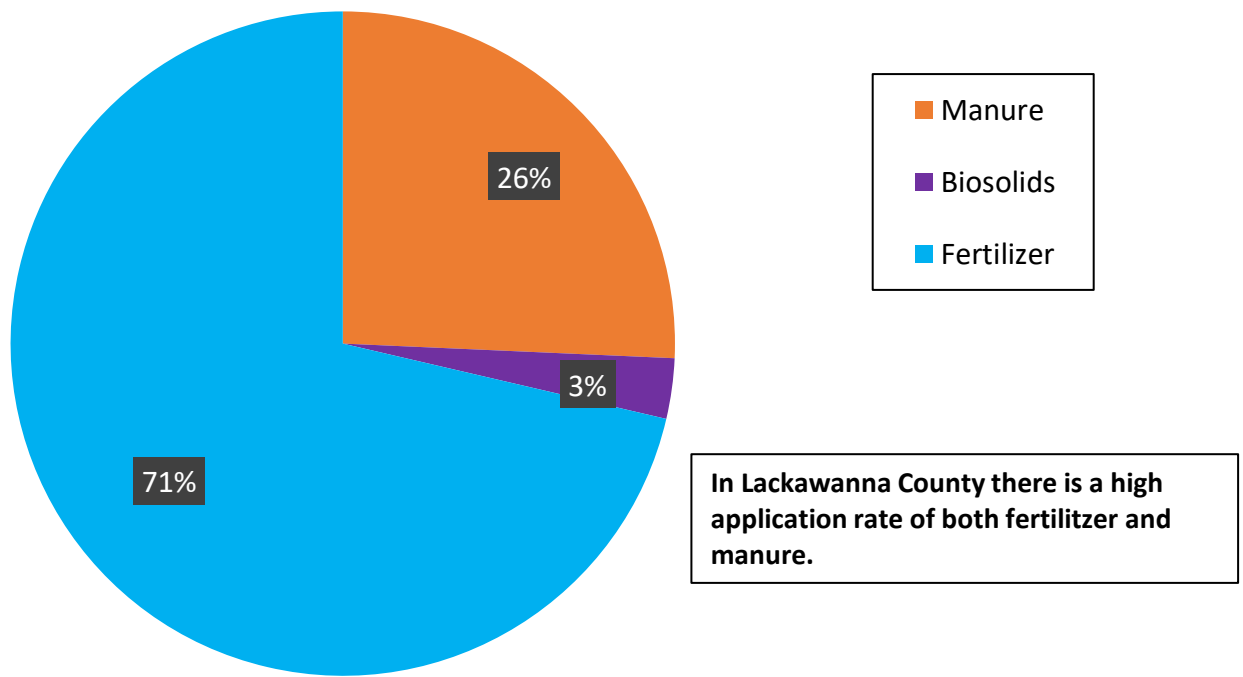
The developed and agricultural sector also contributes a fair amount to the controllable load in Lackawanna County.

Because wastewater, agriculture and developed/urban sources make up the majority of the controllable load in Lackawanna County, these sectors will need to consider how they can supply the majority of the reductions to reach local goals. Septic sources can also be reduced.

These estimates were generated using the Chesapeake Bay Program's Phase 6 Watershed Model. The model is generated using water quality monitoring data.

Estimated loads by sector can be found on CAST at: <http://cast.chesapeakebay.net/>. Log in and click on the reports' tab; Report type: loads report, Geographic Scale: county-area in CBWS only, Geographic Area: select Lackawanna County, Scenarios: 2019 Progress

Estimated Share of Nitrogen Applied to Agricultural Land In Lackawanna County by Main Source

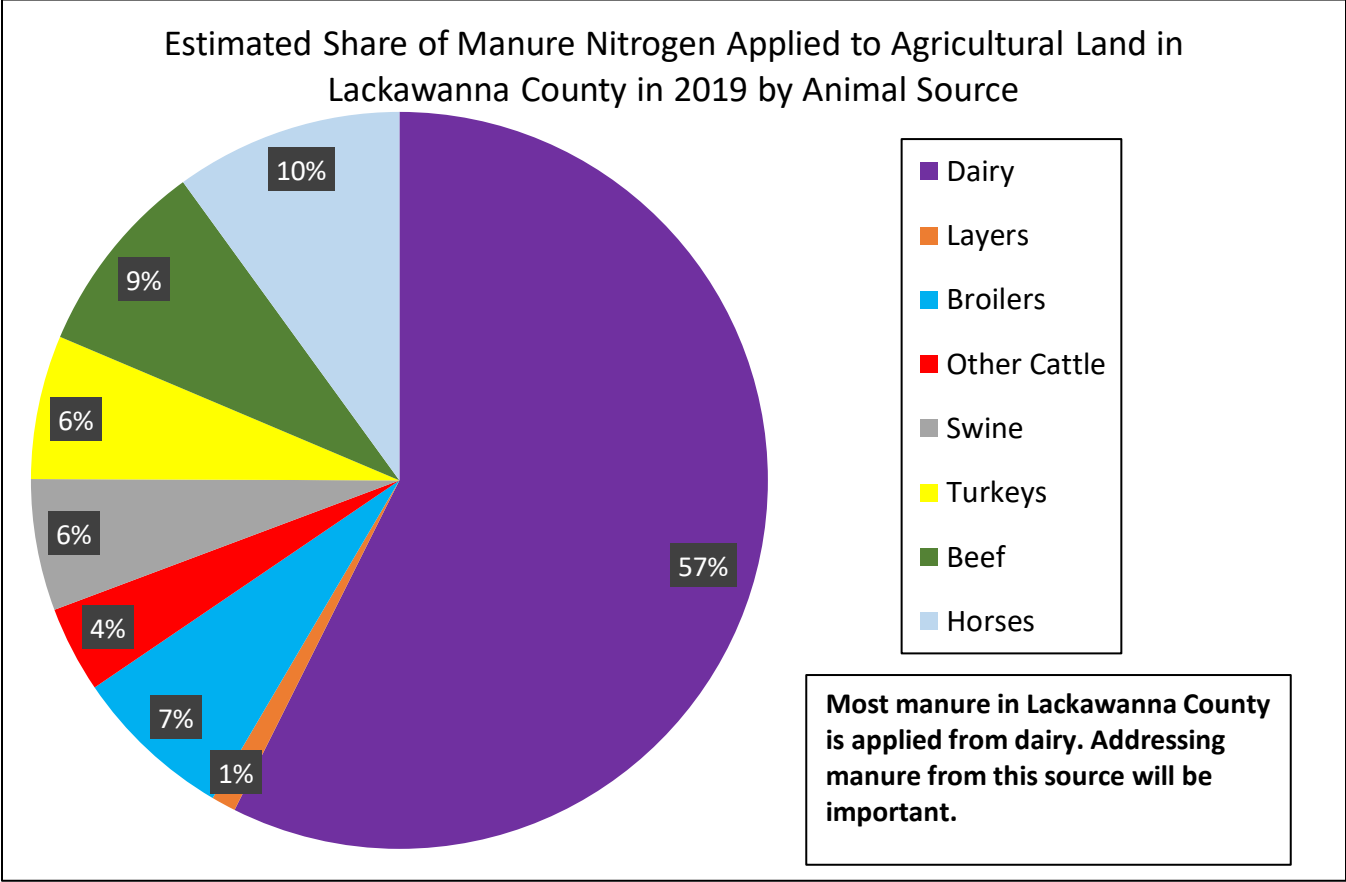


Understanding how nutrients are being applied to the land can lead to the sources that may need to be managed.

- Most nutrients are applied to agricultural land in Lackawanna County as both fertilizer and manure
- Nutrients that are applied to agricultural land and not taken up by crops can negatively impact water quality.
- When identifying strategies to manage nutrient application, focusing on both fertilizer and manure will be important to address the issue. These can require different control and management practices such as advanced or precision nutrient application, manure storage, manure transport, etc.

Estimated application of nutrients by source can be found on CAST at:

<http://cast.chesapeakebay.net/>. Log in and click on the reports' tab. Report type: Nutrients Applied, Geographic Scale: county-area in CBWS only, Geographic Area: select Lackawanna County, Scenarios: 2019 Progress

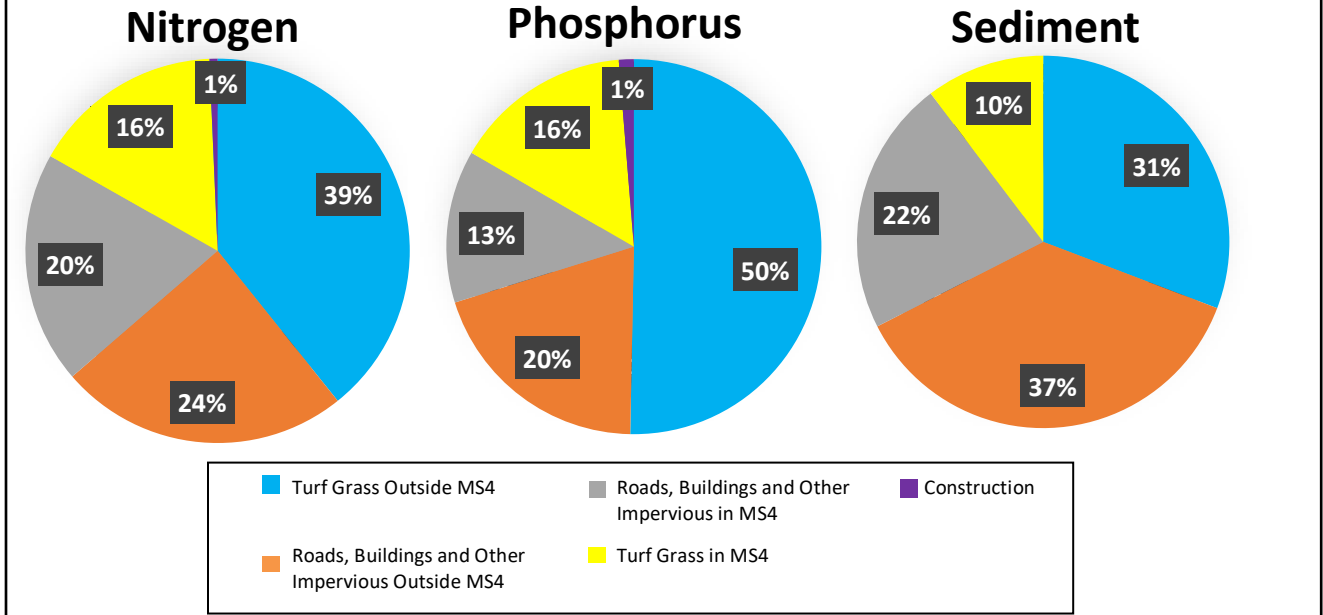


Understanding where manure is coming from within the county will help identify opportunities to manage it.

Most manure in Lackawanna County is from dairy operations. Focusing efforts on implementing practices at these operations can address a large portion of Lackawanna County's manure management needs.

Estimated share of manure nutrient animal sources can be found on CAST at <http://cast.chesapeakebay.net/>. Log in and click on the reports' tab. Report type: Nutrients Applied, Geographic Scale: county-area in CBWS only, Geographic Area: select Lackawanna County, Scenarios: 2019 Progress

Lackawanna County - Loads Delivered to Streams from Developed/Stormwater Sector



The developed/ stormwater sector is also an important source of nutrients and sediment in Lackawanna County.

The charts above show the estimated breakdown of sources of nutrients and sediment to local streams exclusively from developed/urban lands.

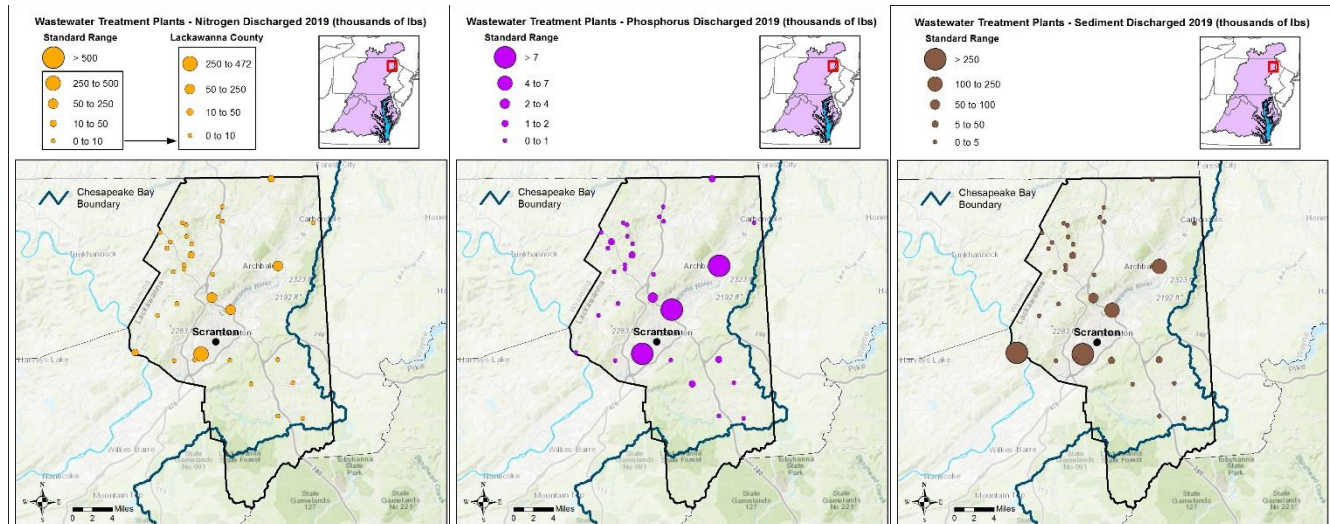
- MS4 (municipal separate storm sewer systems) areas are regulated by DEP, while land outside of MS4 areas is not regulated for stormwater.
- The majority of the developed/urban load comes from outside MS4 areas.
- Managing unregulated stormwater areas may take different outreach, voluntary programs and funding programs to implement practices.
- Turf grass represents grassy and barren lands that have been altered through compaction, removal of organic material, and/or fertilization. These include all lawns and grassy areas in residential, commercial, recreational, cemeteries, shopping centers, etc.

Understanding where stormwater nutrient and sediment comes from is an important first step in addressing it.

- In Lackawanna County, just over half of the nutrient load attributes from turf grass, while just over half of the sediment load comes from impervious areas.

Estimated loads by sources can be found on CAST at <http://cast.chesapeakebay.net/>. Log in and click on the reports' tab. Report type: loads report, Geographic Scale: county-area in CBWS only, Geographic Area: select your county, Scenarios: 2019 Progress

Wastewater Treatment Plant Locations and Loads



The maps above show the locations of wastewater treatment plants within Lackawanna County and their annual discharges of nitrogen, phosphorus and sediment in 2019.

Wastewater makes up the greatest portion of nutrient loads to streams. While there have been significant reductions in Lackawanna County, there is still room for reductions, particularly of nutrients. Wastewater is an important source to control as discharges directly enter the streams.

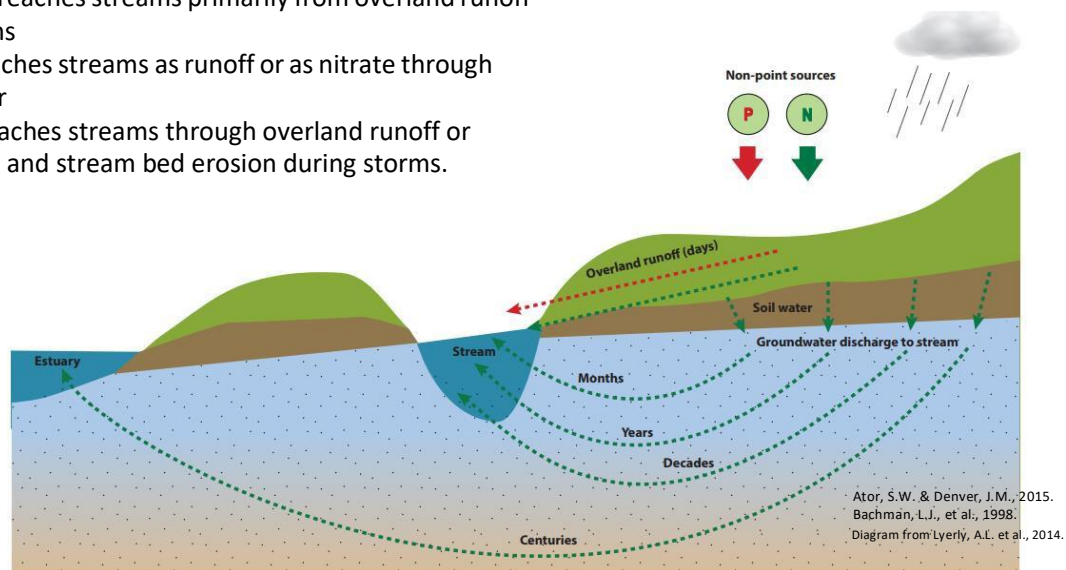
Understanding where the higher loading plants are located can help identify opportunities for treatment plant upgrades in the future.

Wastewater loads can be found on CAST at <http://cast.chesapeakebay.net/>. Log in and click on the Results dropdown and select the Reports tab. Report type: wastewater report, Geographic Scale: county-area in CBWS only, Geographic Area: select your county, Wastewater: 2019

A shapefile of direct loads, including wastewater facilities, can be found on CAST. Click "Learn More" under "Map Tools & Spatial Data". Click the "GIS" hyperlink next to the "Direct Loads" bullet.

The transport of nutrients matters for planning implementation

- Phosphorus reaches streams primarily from overland runoff during storms
- Nitrogen reaches streams as runoff or as nitrate through groundwater
- Sediment reaches streams through overland runoff or stream bank and stream bed erosion during storms.



The way in which nutrients and sediment reach our streams impacts which practices will be effective at controlling them.

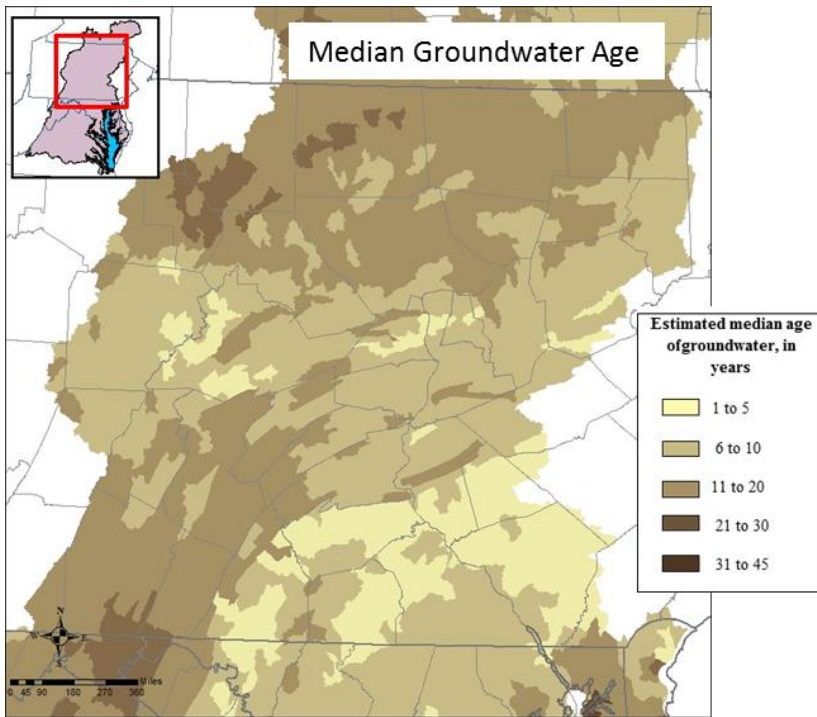
Phosphorus and sediment travel over the top of the land during high runoff events such as storms and rainfall, and also enter streams from stream bank or stream bed erosion.

Nitrogen can travel over land as well, but in many watersheds, including those in Lackawanna County, it travels primarily as nitrate underground in groundwater.

- For example, in the Tunkhannock Creek Watershed 40.0%, and in the Susquehanna River at Wilkes-Barre 57.9%, of the nitrogen entering the streams is in the form of nitrate from groundwater.
- If management practices only focus on overland runoff, they could be missing a lot of the nitrogen that is entering streams through groundwater.
- Once nitrogen is in groundwater, it is very difficult to remove. Effective practices include those that stop nitrogen from entering groundwater in the first place, like applying less nitrogen and planting cover crops.
- Riparian buffers can remove nitrate from groundwater if placed in effective locations.

Percent of Nitrogen entering the streams as groundwater nitrate can be found at <https://pubs.usgs.gov/wri/wri98-4059/pdf/wri98-4059.pdf>

Groundwater takes varying amounts of time to reach streams depending on location



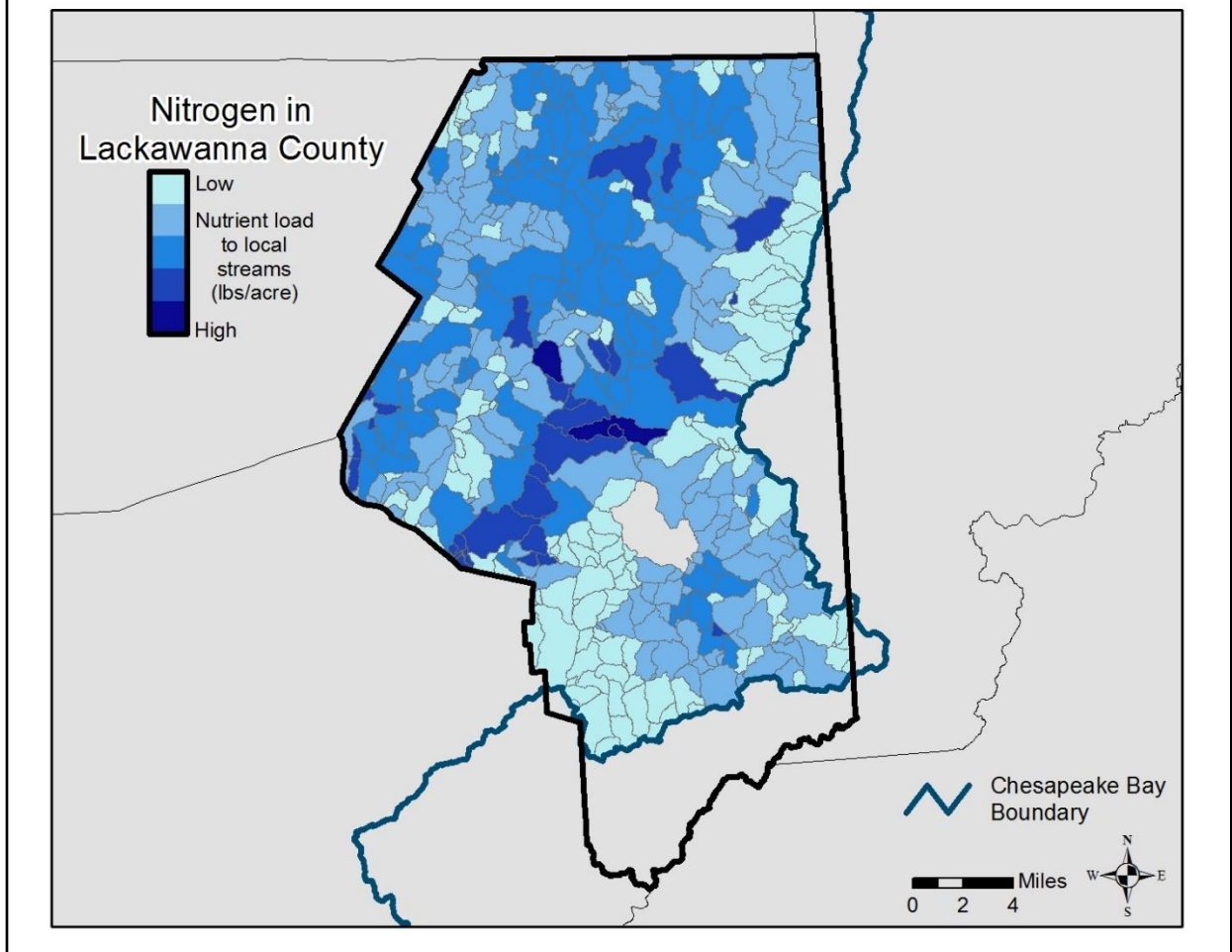
- Nitrate in groundwater represents a range of ages from recent to decades old
- Benefits from management actions will manifest immediately as well as into the future
- Chesapeake Bay Program estimates the median groundwater age across Lackawanna County is between 6 and 20 years, with much of the groundwater being 6 to 10 years.
- This means we expect somewhat of a “lag time” between when a practice is implemented and when that practice’s impact can be seen in local streams.

Groundwater takes anywhere from days to years to reach nearby streams.

In Lackawanna County, the groundwater is average for the age range in the Pennsylvania’s portion of the Chesapeake Bay watershed, meaning that it might take a time to reach streams. The average ground water age in Lackawanna County is 6-10 years.

This means we would expect to see benefits from management actions related to groundwater slightly delayed compared to some areas of the watershed, but sooner when compared to other areas.

USGS SPARROW Model Nitrogen



Focusing efforts on the highest loading areas within Lackawanna County can result in the greatest water quality benefits

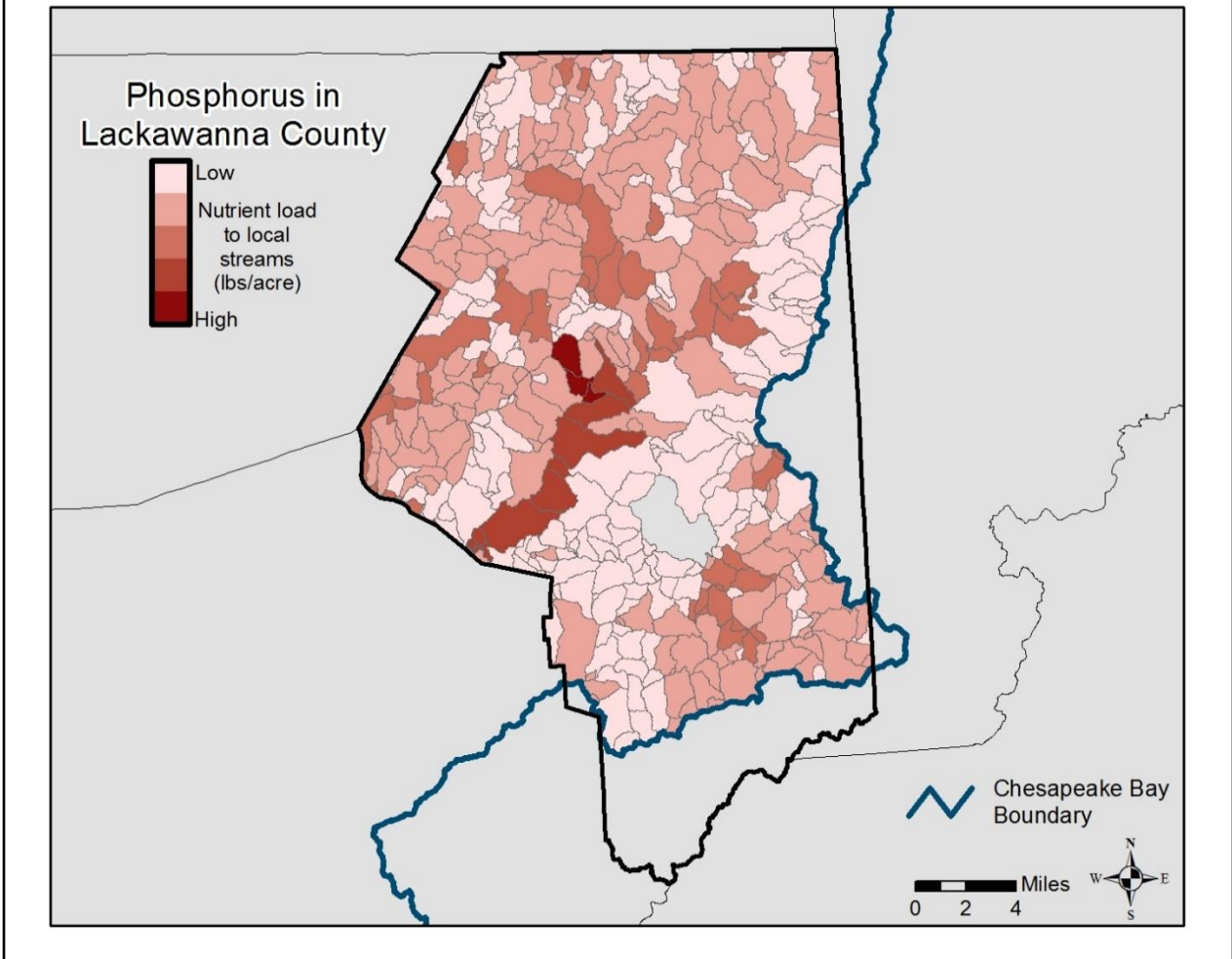
We can estimate where the highest amounts of nitrogen are entering local streams.

The maps above show these higher loading areas within Lackawanna County.

Focusing efforts on the highest loading areas can result in the greatest water quality benefits by addressing a larger portion of the nutrients entering streams. In Lackawanna County, the highest loading areas for both nitrogen and phosphorus tend to overlap in many areas. Focusing restoration efforts in those areas can be effective for both nitrogen and phosphorus.

The maps above are generated from the USGS SPARROW model for the Chesapeake Bay watershed. More info can be found- <https://water.usgs.gov/nawqa/sparrow/#>

USGS SPARROW Model- Phosphorus



Focusing efforts on the highest loading areas within Lackawanna County can result in the greatest water quality benefits

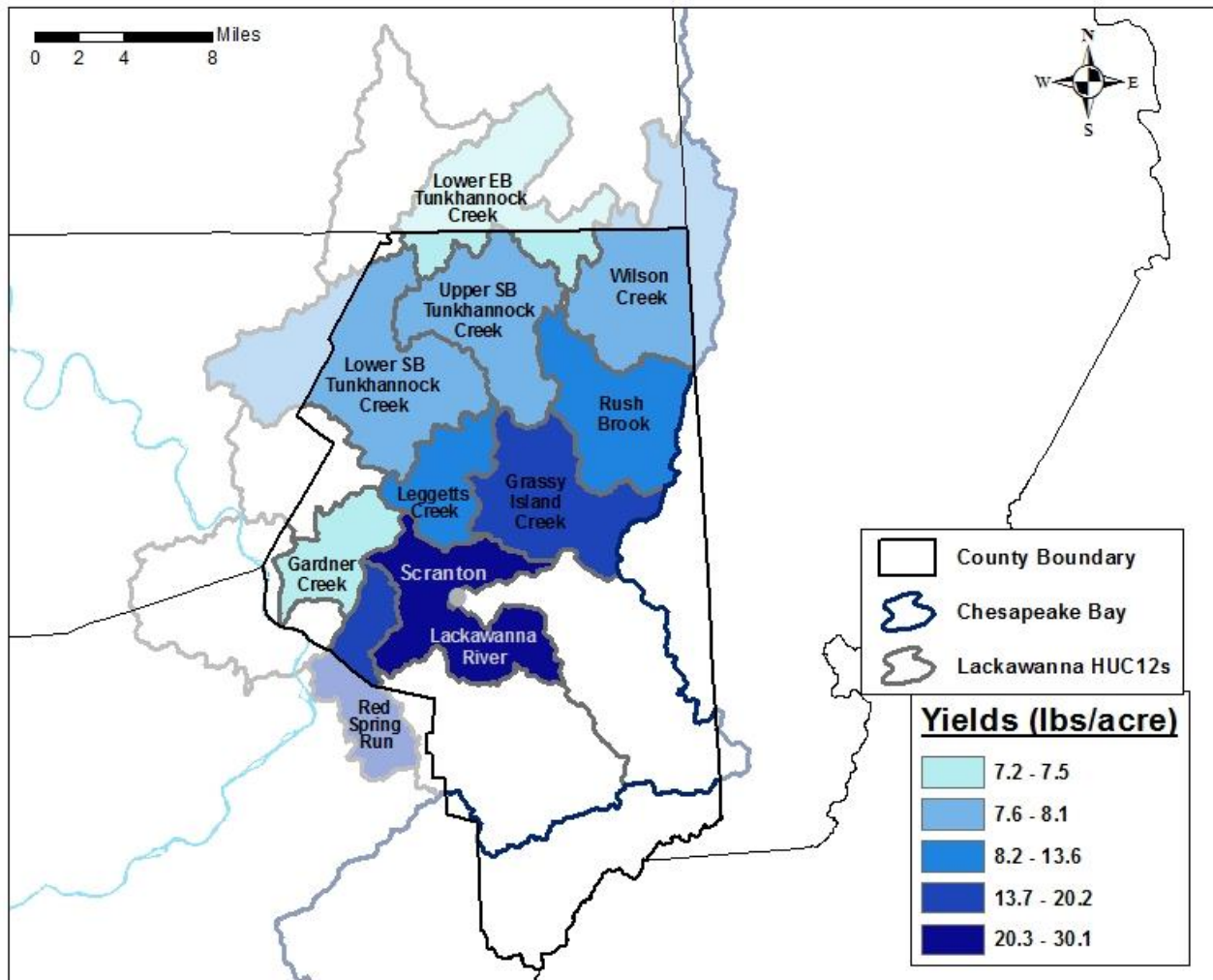
We can estimate where the highest amounts of phosphorus are entering local streams.

The maps above show these higher loading areas within Lackawanna County.

Focusing efforts on the highest loading areas can result in the greatest water quality benefits by addressing a larger portion of the nutrients entering streams. In Lackawanna County, the highest loading areas for both nitrogen and phosphorus tend to overlap in many areas. Focusing restoration efforts in those areas can be effective for both nitrogen and phosphorus.

The maps above are generated from the USGS SPARROW model for the Chesapeake Bay watershed. More info can be found- <https://water.usgs.gov/nawqa/sparrow/#>

Top 10 HUC-12 Watersheds Total Nitrogen Yields



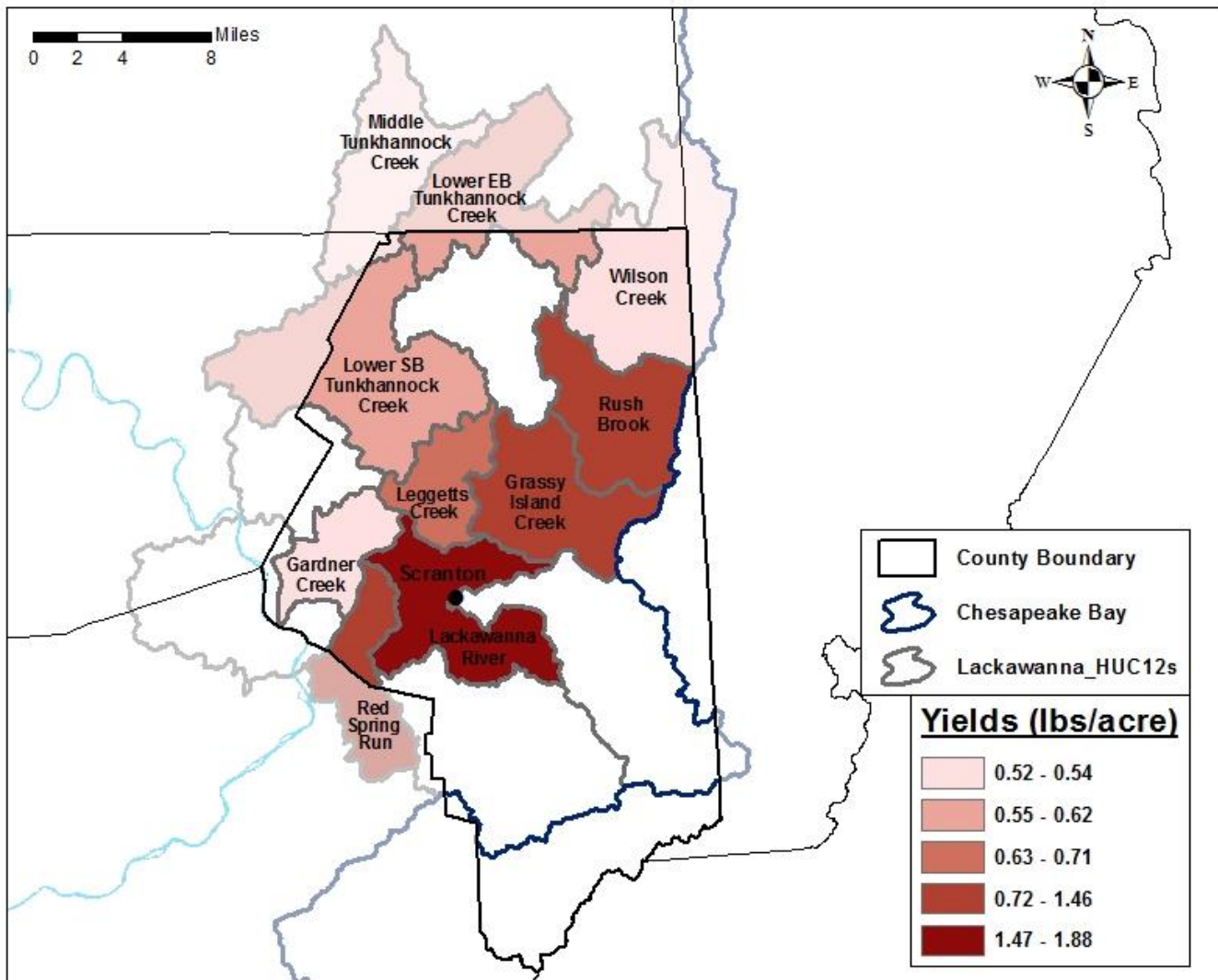
For each Hydrologic Unit Code (HUC) 12 watershed with a portion of the watershed inside of Lackawanna County geographic border, we can estimate the total nitrogen yield (in pounds/acre).

HUCs are a way of identifying drainage basins, or watersheds, in an area that catches precipitation that falls within that area, and funnels it to a particular creek, stream, river and so on, until the water drains into an ocean. Drainage basins come in all shapes and sizes, with some only covering an area of a few acres while others are thousands of square miles across, and cross boundaries such as county, state, and international borders. HUC-12 is a more local sub-watershed level that captures tributary systems.

The above map shows the top 10 HUC-12 watersheds for Total Nitrogen yields.

- Although we can never expect these areas to reduce their entire yield, identifying where the highest yields come from can help to geographically focus efforts.
- Lackawanna River and Grassy Island Creek are the HUC-12 watersheds with the highest estimated total nitrogen yields.
- Where HUC-12 boundaries fall within more than one county, it may be helpful to develop inter-county partnerships.

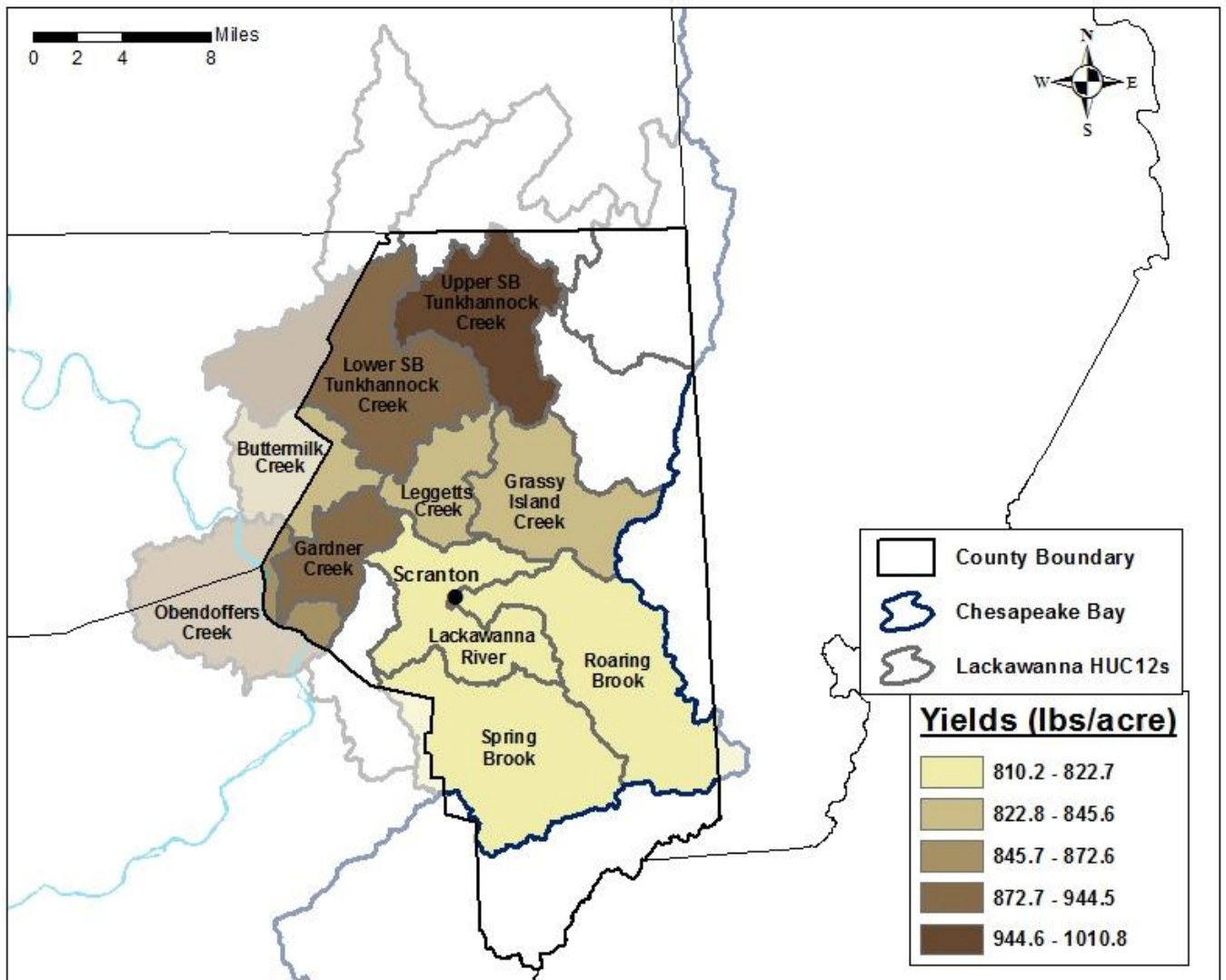
Top 10 HUC-12 Watersheds Total Phosphorus Yields



For each Hydrologic Unit Code (HUC) 12 watershed with a portion of the watershed inside of Lackawanna County geographic border, we can estimate the total phosphorus yield (in pounds/acre).

- The above map shows the top 10 HUC-12 watersheds for Total Phosphorus yields.
- Although we can never expect these areas to reduce their entire yield, identifying where the highest yields come from can help to geographically focus efforts.
- Lackawanna River is the HUC-12 watershed with the highest estimated Total Phosphorus yields.
- Where HUC-12 boundaries fall within more than one county, it may be helpful to develop inter-county partnerships.

Top 10 HUC-12 Watersheds Total Suspended Sediment Yields



For each Hydrologic Unit Code (HUC) 12 watershed with a portion of the watershed inside of Lackawanna County geographic border, we can estimate the total suspended sediment yield (in pounds/acre).

- The above map shows the top 10 HUC-12 watersheds for Total Suspended Sediment yields.
- Although we can never expect these areas to reduce their entire yield, identifying where the highest yields come from can help to geographically focus efforts.
- Upper SB Tunkhannock Creek is the HUC-12 watershed with the highest estimated Total Suspended Sediment yields.
- Where HUC-12 boundaries fall within more than one county, it may be helpful to develop inter-county partnerships.

Most Cost-effective Agricultural Practices for Nitrogen Reduction in Lackawanna County

Sector	BMP	Nitrogen \$/lb reduced/year
Agriculture	Dairy Precision Feeding and/or Forage Management	-26.22
Agriculture	Tillage Management- Conservation, Continuous High Residue, Low Residue	0.0
Agriculture	Off Stream Watering Without Fencing	1.94
Agriculture	Barnyard Runoff Control	7.07
Agriculture	Grass Buffer-Streamside with Exclusion Fencing	8.16
Agriculture	Alternative Crops	8.89
Agriculture	Forest Buffer-Streamside with Exclusion Fencing	9.87
Agriculture	Grass Buffer	13.52
Agriculture	Wetland Restoration - Floodplain	15.24
Agriculture	Land Retirement to Pasture	15.39
Agriculture	Nutrient Management Core N	17.04
Agriculture	Forest Buffer	17.28
Agriculture	Nutrient Management N Timing	25.56
Agriculture	Tree Planting	30.68
Agriculture	Nutrient Management N Rate	30.98

The list above reflects the top 15 most cost-effective agricultural practices for reducing nitrogen in Lackawanna County.

This list can serve as a starting point to assess feasibility of practice implementation.

For example, even though Alternative Crops are cost-effective, this practice involves replacing crops with others such as switchgrass, which may not be a feasible practice to implement.

Most Cost Effective BMPs can be found here:

<http://cast.chesapeakebay.net/Documentation/CostProfiles>

- Under "Tabular Data", Click on the "BMP Pounds Reduced and Costs by County" link.

Detailed information about the BMPs can be downloaded on the CAST website at

<http://cast.chesapeakebay.net/Home/SourceData> by clicking "Download Source Data".

The Official Quick Reference Guide for BMPs can be found here:

https://www.chesapeakebay.net/documents/BMP-Guide_Full.pdf

Most Cost-effective Developed Practices for Nitrogen Reduction in Lackawanna County

Sector	BMP	Nitrogen \$/lb reduced/year
Developed	Conservation Landscaping Practices	-149.05
Developed	Nutrient Management Plan	4.66
Developed	Forest Planting	9.41
Developed	Forest Buffer	41.84
Developed	Tree Planting - Canopy	275.14
Developed	Dry Extended Detention Ponds	419.46
Developed	Infiltration Practices w/ Sand, Veg. - A/B soils, no underdrain	587.63
Developed	Infiltration Practices w/o Sand, Veg. - A/B soils, no underdrain	590.62
Developed	Bioswale	636.78
Developed	Storm Drain Cleaning	642.2

The list above reflects the top 10 developed, most cost-effective practices at reducing nitrogen in Lackawanna County.

This list can serve as a starting point to assess feasibility of practice implementation.

For example, even though forest planting is cost effective, it may not be feasible to turn parks and open spaces into forests.

Most Cost Effective BMPs can be found here:

<http://cast.chesapeakebay.net/Documentation/CostProfiles>

- Under "Tabular Data", Click on the "BMP Pounds Reduced and Costs by County" link.

Detailed information about the BMPs can be downloaded on the CAST website at

<http://cast.chesapeakebay.net/Home/SourceData> by clicking "Download Source Data".

The Official Quick Reference Guide for BMPs can be found here:

https://www.chesapeakebay.net/documents/BMP-Guide_Full.pdf

Remaining Opportunities in Lackawanna County for Agricultural Practices

Practice	Current Reported Implementation	Acres Currently Reported	Acres Remaining
Basic Nutrient Management	3%	550	21,100
Conservation Tillage	8%	600	6,400
High Residue Tillage	14%	1,000	6,000
Traditional Cover Crop	5%	350	6,700
Cover Crop with Fall Nutrients	0%	0	7,000
Prescribed Grazing	3%	180	5,300
Barnyard Runoff Control	58%	15	10
Soil & Water Conservation Plans	25%	5,800	17,400
Forest Buffers	N/A	80	5,300

This chart shows the current **reported** implementation in Lackawanna County of some effective agricultural practices, and the remaining acres of land in the county available to implement those practices.

The current reported implementation percent reflects how much of the land that is available for a particular practice already has that practice reported to be implemented on it.

For example, prescribed grazing's current percent implementation reflects that 3 percent of pasture land in Lackawanna County is currently reported to have prescribed grazing implemented. 5,300 acres of pasture remain in the county without prescribed grazing, which may represent an opportunity for further implementation of that practice.

Remaining opportunity is determined as the difference between reported implemented acres and all available acres on which the practice can be implemented. Land on which BMPs can be implemented and reported implementation are available on CAST at <http://cast.chesapeakebay.net>. Log in and click on the reports' tab. Report type: Loads Report, Geographic Scale: county-area in CBWS only, Geographic Area: select Lackawanna County, Scenarios: 2019 Progress, Aggregations: Source-all agency for available acres. Report type: BMP Summary, Geographic Scale: county-area in CBWS only, Geographic Area: select Lackawanna County, Scenarios: 2019 Progress for reported implementation.

Remaining Opportunities in Lackawanna County for Stormwater Practices on Developed/Urban Land

Practice	Acres Currently Reported
Erosion & Sediment Control	100%
Runoff Reduction	3,500
Stormwater Treatment	30
Wetlands and Wet Ponds	15
Bio retention	0
Dry ponds	0
Urban Tree Planting	0.5

This chart shows the current **reported** implementation in Lackawanna County of stormwater practices.

Erosion and sediment control addresses construction areas and time periods. However, sediment from developed land and from erosion of streams on developed land persist as issues long after construction is over. Therefore, stormwater management is incredibly important for managing these issues once construction ends.

Opportunities exist in Lackawanna County to implement stormwater management practices in developed and urban areas.

Acres currently reported are available on CAST at <http://cast.chesapeakebay.net>. Log in and click on the reports' tab. Report type: BMP Summary, Geographic Scale: county-area in CBWS only, Geographic Area: select Lackawanna County, Scenarios: 2019 Progress

Appendix I: Phase 3 WIP State Workgroup Recommendations: Creating A Customized Partnership

Pennsylvania's Phase 3 WIP state workgroups developed a series of recommendations for all counties in Pennsylvania's Chesapeake Bay watershed. As the county lead partner developing a CAP, you can use these recommendations to create your CAP, or you may choose to tailor these recommendations based on your county's structure and needs as you develop your CAP.

The Pennsylvania Phase 3 Watershed Implementation Plan (WIP) state workgroup recommendations can inform your local planning strategies and can help you to develop your Countywide Action Plan (CAP). This information can assist with answering questions like:

- Where do we start?
- What are important priorities for our county?
- What BMPs can we identify and implement in our county to reach our goal?
- How do we begin to quantify a goal to address our priorities?
- What resources exist to address our goals?

This Appendix provides specific information to help answer these questions. It provides information on the multiple state workgroup recommendations, it provides your county-specific scenario using the state recommendations, and it offers resources to help you identify the next steps.

We hope this Appendix gives you a foundation to work from in telling your county's local story and in identifying opportunities for meeting your local pollution reduction goals.

Pennsylvania State Workgroup Recommendations

During the development of Pennsylvania's Phase 3 WIP, state workgroups that included public and private sector leaders and partners identified priority initiatives for each sector and provided recommendations in each sector that help to reduce nutrient and sediment pollution. These recommendations can be broken down into individual goals for your county. The Best Management Practice (BMP) implementation rate charts for your county can be found later in this Appendix, following the explanation of state workgroup recommendations. For more information on the WIP workgroup state recommendations, please visit www.dep.pa.gov/chesapeakebay/phase3.

A. Agriculture

The 15-member Agriculture Workgroup produced an action plan and recommendations that seek to maintain a vibrant and productive agricultural sector while also meeting local water quality goals that will contribute to cleaning up local waters as well as the Chesapeake Bay. This action plan and recommendations became part of the Phase 3 WIP.

The Agriculture Workgroup was composed of a variety of members from throughout the agriculture sector, including: Farm Bureau; Department of Agriculture; dairy, swine, and poultry producers; Conservation Districts; farmers; and industry representatives who came together to identify BMPs and reduction rates that the workgroup believes are feasible and reasonable for the counties to accomplish. In addition to compliance with basic regulatory obligations, the plan and recommendations focus on three key elements: Soil health; Manure and nutrient management; and Riparian ecosystem improvements and restoration.

1. *Agricultural Compliance*

Action: Ensure farmers are implementing their state required Agricultural Erosion and Sediment Control (Ag E&S) or conservation plan, Manure Management/Nutrient Management Plan, and implementing required barnyard runoff controls, where needed.

- Goal 1: Continue the compliance, inspection and enforcement programs associated with Pennsylvania's Clean Streams Law and federal requirements.

2. *Soil Health*

Action: Use crop and soil management practices that improve long-term soil health and stability.

- Goal 1: Conservation tillage on 20% of croplands.
- Goal 2: High Residue Low Disturbance tillage (No-till) on 47% of croplands.
- Goal 3: Non-harvested cover crops on 33-50% of croplands.
- Goal 4: Prescribed grazing on 50% of pastures, including exclusion fencing, where appropriate.

3. Expanded Nutrient Management

Action: Non-manured farmlands use nutrient management plans and precision nutrient management practices.

- Goal 1: 20% of non-manure croplands have and implement Nutrient Management Plans.
- Goal 2: 20% of manured and non-manure croplands use the "4Rs" principles of "Right Source, Right Rate, Right Time and Right Place" for increased nitrogen and phosphorus reductions.

4. Manure Storage Facilities

Action: Install and use manure storage systems that meet federal standards.

- Goal 1: 90% of swine and poultry operations have adequate manure storage facilities.
- Goal 2: 75% of other livestock operations have adequate manure storage facilities.

5. Precision Feeding

Action: Use precision feed management to reduce nitrogen and phosphorus in manure.

- Goal 1: 70% of cows fed with precision management.

6. Integrated Systems for Elimination of Excess Manure

Action: Create integrated (county/regional) programs for removal of or beneficial use of excess manure.

- Goal 1: Develop coordinated regional systems for removing excess manure (through treatment or transportation) from the Chesapeake Bay watershed.

7. Forested and Grassed Riparian Buffers

Action: Plant grassy vegetation or forest buffers along streams

- Goal 1: 15% of non-buffered streamside farm lands add 35 ft wide grassed buffer.
- Goal 2: 25% of non-buffered streamside farm lands add 35 ft wide forested buffer.

B. Forestry

Forestry conservation practices such as riparian forest buffers and upland tree plantings are both cost-effective for improving water quality while also providing significant environmental

and social benefits in both agricultural and developed areas. Trees along streams improve habitat, reduce flooding impacts, and provide shade to cool waterways. Trees in backyards and communities increase property values and improve human health. These restoration activities help connect citizens to their local watersheds.

The 15-member Forestry Workgroup produced an action plan with forestry practices that seek to reduce nitrogen and phosphorus pollution and meet water quality standards, and Pennsylvania partners and other stakeholders are adopting the action plan and the workgroup's recommendations as part of the Phase 3 WIP.

Note that some of these practices are developed specifically to reduce nitrogen and phosphorus, but some are being instituted for other reasons where nitrogen and phosphorus reductions are co-benefits.

1. Forested Riparian Buffers

Action: Plant trees and shrubs or grassy vegetation along streams. For accreditation, buffers must be a minimum of 35 feet in width up to 300 feet in width from the edge of the stream.

- Goal 1: 83,000 acres of forested riparian buffer on agricultural lands.
- Goal 2: 2,650 acres of forested riparian buffer in developed areas.

2. Tree Canopy

Action: Plant trees in developed areas.

- Goal 1: 50 acres of urban tree canopy planted (15,000 trees).

3. Woods and Pollinator Habitat

Action: Convert lawn and turf areas to woods and meadows.

- Goal 1: 5,000 acres of lawns to woods.
- Goal 2: 5,000 acres of lawns to meadows.

4. Forest, Farm and Natural Area Conservation

Action: Provide credits for land conservation and revise zoning and ordinances to conserve existing natural areas.

- Goal: 20,000 acres of land conserved annually.

5. Stream and Wetland Restoration

Action: Support efforts to restore local streams and wetlands.

- Goal 1: 60,000 linear feet of urban and non-urban streams restored per year utilizing appropriate measures for the site such as stabilization, natural stream channel design, floodplain restoration, etc.

- Goal 2: 400 acres of wetlands restored per year.

C. Stormwater

The 12-member Phase 3 WIP Stormwater Workgroup developed an action plan and recommendations for BMPs to help localities reduce nitrogen and phosphorus and meet local water quality standards. Pennsylvania partners and other stakeholders are adopting the action plan and the recommendations as part of the Phase 3 WIP.

The Stormwater Workgroup was composed of members from Planning Commissions, MS4 municipalities, developers, and various state agencies.

1. Implement Pollutant Reduction Plans (PRPs) for Municipal Separate Storm Sewer System (MS4) Communities

Action: As one component of the 2018 permit, MS4 Permittees must implement management practices to achieve the reductions identified in their respective PRPs by 2023.

- Goal 1: MS4s in the Chesapeake Bay watershed implement BMPs in current MS4 NPDES permits by 2023.
- Goal 2: Implement the PennDOT and Turnpike Commission MS4 Permits in concert with the other MS4 NPDES permits by 2023

2. New Riparian Forest Buffers

Action: Plant trees and shrubs alongside streams.

- Goal 1: Incentivize and facilitate new acres of riparian forest buffers associated with the MS4 Pollutant Reduction Plans

3. Control Measures for Illicit Discharges

Action: DEP facilitates municipal ordinance amendments to control illicit discharges to storm sewer systems.

- Goal 1: Municipal ordinance adoption for control of pool drainage.
- Goal 2: Municipal ordinance adoption for control of residential car washing draining.

4. Industrial Stormwater

Action: DEP develops technical guidance, intended to supplement existing requirements, to inform industrial stormwater discharge permittees engaged in these activities. This guidance

will list appropriate BMP utilization, design standards and implementation to reduce pollution which are acceptable to manage industrial stormwater.

- Goal 1: Implementation of Chesapeake Bay BMPs by industrial stormwater discharge permittees.
- Goal 2: Identify appropriate industrial stormwater permits suitable for impervious surface retrofit BMPs with the goal of facilitating industrial impervious surface to pervious cover or other volume reduction retrofit BMP.

5. Fertilizer Legislation

Action: Pass the legislation described under Programmatic Commitments in the Pennsylvania Phase 3 WIP, Other Legislation to Facilitate Reductions.

6. Continue to Implement Erosion and Sediment (E&S) Control and Post Construction Stormwater Management (PCSM) Program

Action: Continue permitting, inspecting, and ensuring compliance with Pennsylvania's erosion and sediment control and post-construction stormwater permit requirements, found in 25 Pa. Code Chapter 102 for all activities including construction, timber harvest, oil and gas exploration, mining, and waste management.

- Goal 1: Increase the number of county conservation districts with post-construction stormwater delegation.
- Goal 2: Increase the inspection outputs as well as DEP staff to ensure compliance with NPDES permit and Chapter 102 delegation.
- Goal 3: Improve the tracking and reporting to include all DEP programs implementing provisions of these regulations.

7. Dirt and Gravel Roads

Action: Continue to implement the Dirt and Gravel Roads Program through the Center for Dirt and Gravel Roads

D. Wastewater

The 14 members of the Phase 3 WIP Wastewater Workgroup researched the feasibility of treating to Enhanced Nutrient Removal (ENR) in Pennsylvania. ENR effluent total nitrogen and total phosphorus concentrations are 3.0 mg/l and 0.4 mg/l, respectively. Currently, the 190 significant wastewater treatment systems with Biological Nutrient Removal (BNR) effluent load limits reached their 2025 nitrogen and phosphorus reduction goals in 2018 (seven years ahead of schedule). BNR effluent total nitrogen and total phosphorus concentrations are 6.0 mg/l and 0.8 mg/l, respectively. Although a number of these systems are treating to a level between BNR and ENR, they are currently obligated to meet an annual load limit based on BNR requirements.

1. Continue Current Treatment Course

Given the ongoing reduction success, one priority initiative is to continue the treatment course described above. The ongoing tracking of the 190 publicly-owned treatment works and their waste load allocations is described in the [Phase 2 Watershed Implementation Plan Wastewater Supplement](#) that will continue to be updated on a regular basis.

2. Plant Optimization Program

DEP's treatment plant optimization program helps troubled facilities get into compliance with permitting requirements. DEP will further investigate the feasibility of how this program could be expanded to help facilities optimize their process for nutrient removal by establishing a facility nutrient removal optimization program. The existing DEP optimization program does not have the capacity to run such a program, and expansion of the program would include a section dedicated to statewide implementation. Varying degrees of implementation could be considered to make the effort slightly less costly; however, the reduction in proposed DEP staffing would shift the burden to the facility to hire operations consultants.

3. Municipalities Implement Onsite Septic System Inspection and Pumping Programs

Properly operated and maintained systems provide better protection of local ground water resources as well as a reduction to the total nitrogen loading to the Chesapeake Bay. If all municipalities with on-lot systems would implement sewage management programs that include inspection of the on-lot system and pumping of septic tanks 55,000 pounds of total nitrogen reduction could be realized.

Sewage management programs that incorporate septic system inspection and pumping are recommended. On-lot system oversight is the responsibility of municipalities per the Pennsylvania Sewage Facilities Act.

Pennsylvania’s Growth Management

Pennsylvania’s Phase 3 WIP relies on the sector growth projections provided by the Chesapeake Bay Program’s Chesapeake Assessment Scenario Tool (CAST). CAST has built-in growth projections based on a land use model that uses a combination of USDA Census of Agriculture data, land use analysis using one meter by one-meter high resolution land use GIS, county level construction data, population census and other attributing data to best predict the land use change by sector. The projected changes to land use accounted for in CAST are only projections. These numbers will change when new data becomes available. As new information becomes available, it will better inform the current growth projection that is accounted for in the model. It is required for Pennsylvania to address sector growth in the development of the WIP. In order for Pennsylvania to account for sector growth the following strategy was developed.

Pennsylvania’s Land Conservation Scenario

Pennsylvania’s approach to land conservation consists of four main components:

1. *Forest Conservation:* Forest conservation of working lands, park lands, and other natural areas by agencies and land trusts
2. *Private Forests:* Acknowledging private working forests with forest management plans.
3. *Wetlands:* Jurisdictional wetlands are excluded from development.
4. *Farmlands:* Preserving farmland according to Pennsylvania’s nation-leading Farmland Preservation Program.

Lackawanna County’s Role in Land Conservation

Pennsylvania’s Land Conservation Scenario can be broken down to individual goals for each county in Pennsylvania’s Bay Watershed. The following represent Lackawanna County’s portion of the Land Conservation Scenario. These numbers represent a portion of Pennsylvania’s goal identified in the WIP. Your county may adjust these goals based on what is reasonable and implementable for your county.

Conservation Practice	Acres Conserved by 2025
Forest Conservation	1,900
Farmland Conservation	540
Wetland Conservation	100

Each county can incorporate its own local zoning ordinances and policies to prioritize land conservation. The following are examples of local zoning ordinances that can be incorporated into your Countywide Action Plans.

Land Policy Type	Defining the Policy
Agriculture Conservation Policy	Organizations and governments proactively conserving farmland and productive soils. Example priority areas include agricultural districts, prime farmland, farmland of state importance, floodplains, and other high-priority farmland conservation areas.
Forest Conservation Policy	Organizations and governments proactively conserving forests and wetlands that provide the greatest benefits to wildlife, human safety, and water quality. Example priority areas include riparian zones, shorelines, large contiguous forest tracts, and other high-priority forest conservation areas
Growth Management Policy	Organizations and governments proactively encouraging growth in areas with supporting infrastructure. Example priority areas include undeveloped or under-developed areas with existing roads, wastewater, and water supply infrastructure.

The above Land Policy Types are available in CAST to be implemented as sector growth strategies. Local Governments can set goals for Land Policy Strategies to be incorporated in their Countywide Action Plans. Municipalities are not forced to require zoning ordinances. However, you can receive credit for the zoning ordinances within your county that are currently in place.

Zoning Ordinances

The Pennsylvania Legislature, through the Municipalities Planning Code (MPC, Act 247 of 1968), grants certain zoning powers to municipalities. Within these powers, a municipality could choose to include measures for land conservation in its local zoning ordinance. Such a choice would also have an impact on sector growth management and would be particularly pertinent during efforts to modernize local planning and zoning. Local governments can go above and beyond current state recommendations for land conservation and sector growth management by implementing more stringent policies, so long as they stay within the powers and purposes granted by the MPC.

“Use zoning” is one measure which could be used for land conservation. Through use zoning, a municipality can assign forests, farms, and wetlands to zones that restrict commercial and residential development. Use zoning may be constitutionally sensitive and should be approached judiciously.

Another measure would be using “density zoning” to manage growth by delineating density restrictions. For example, a zoning ordinance may establish a maximum number of units per acre or a minimum lot size in acres. Density zoning could also be implemented on a sliding

scale. For example, a zone could have a permitted and preferred use for agriculture but also allow for limited residential development on a sliding scale – such as up to 2 units allowed on the first 50 acres and then gradually increasing the number of allowed units on additional acres. This variation on density zoning is known as “sliding-scale zoning.”

Subdivision Ordinances

A local “subdivision ordinance” manages the development and division of property parcels. Municipalities may use a subdivision ordinance to permit agricultural and residential development on rural land while controlling for density.

Conservation Easements

Pennsylvania has enacted enabling legislation which authorizes municipalities to adopt a local ordinance and thereby establish a program for purchasing “conservation easements.” These easements are voluntary agreements which restrict uses or development on a property to protect natural resources and manage growth. Any restrictions assigned to an easement will remain with the title of the land for the duration of the easement term, sometimes guaranteeing conservation in perpetuity. A municipality could also partner with other government entities or land trusts as a strategy for leveraging resources for easement purchases.

Transfer of Development Rights

Pennsylvania has enacted enabling legislation which authorizes local governments to create “Transfer of Development Rights” (TDR) programs. Under a TDR program, a landowner may voluntarily sell development rights to a buyer, such as a municipality, for use on the landowner’s property while still retaining ownership. Any existing agricultural or forestry uses may continue but the landowner may not develop the property after selling his or her development rights. By purchasing development rights on private property, a municipality can protect private land and natural resources from the environmental implications of growth and development.

Multi-Municipal Planning

A regional approach to land conservation policies may be optimal for managing growth and designating rural resource areas where there is additional strength of law to promote such conservation. Multi-municipal planning may offer local governments increased agility in zoning and planning efforts as well as mutually beneficial environmental outcomes.

Agriculture BMP Implementation Amounts for Lackawanna County Based on State Workgroup Implementation Rate Recommendations

The agriculture BMPs and implementation rates provided in the chart below are based on the state recommendations identified in the Phase 3 WIP. These recommendations were developed by the 15-member Agriculture Workgroup described on page I-2. The workgroup identified the below BMPs and implementation rates as obtainable goals for your county. Highlighted BMPs indicate that your county already exceeds the recommended implementation rate (the number in parenthesis is the current reported implementation rate). In these highlighted areas, your county should consider keeping the current implementation rate or setting a higher goal for implementation.

Detailed descriptions of each BMP listed in the chart below can be on the Best Management Practice Quick Reference Guide found here <https://pacleanwateracademy.remote-learner.net/course/view.php?id=431#section-2>.

Best Management Practice	Amount	Units of Measure	Percent of Total Available Acres
Agriculture Compliance			
Conservation Plans	10,900	Total Acres	53%
Nutrient Management (Core N) Manured Acres	9,500	Total Acres	69%
Nutrient Management (Core P) Manured Acres	2,800	Total Acres	21%
Barnyard Runoff Controls	0 (14)	New Acres	58% (64%)
Soil Health			
High Residue Tillage	3,300	Acres per Year	52%
Conservation Tillage	1,300	Acres per Year	20%
Traditional Cover Crops	700	Acres per Year	10%
Cover Crops with Fall Nutrients	2,400	Acres per Year	37%
Prescribed Grazing	1,500	Total Acres	34%
Expanded Nutrient Management			
Nutrient Management (Core N) Fertilizer Acres	750	Acres	88%
Nutrient Management (Core P) Fertilizer Acres	250	Acres	29%
Nutrient Management Rate (Core N)	1,400	Acres	7%
Nutrient Management Rate (Core P)	1,400	Acres	7%
Nutrient Management Placement (Core N)	1,700	Acres	9%
Nutrient Management Placement (Core P)	1,400	Acres	7%
Nutrient Management Timing (Core N)	1,900	Acres	10%
Nutrient Management Timing (Core P)	1,400	Acres	7%
Manure Storage Facilities			
Manure Storage Facilities	3,000	New AU's	65%
Dairy Precision Feeding			
Dairy Cow Precision Feed Management	0	Dairy Cow AU's	0%
Integrated System for Elimination of Excess			
Manure Transport out of Lackawanna County	0	Dry Tons Per Year	N/A
Agriculture Riparian Zone			
Forested Riparian Buffers	300	New Acres	N/A
Forested Riparian Buffers with Exclusion Fencing	250	New Acres	N/A
Grass Riparian Buffers	190	New Acres	N/A
Grass Riparian Buffers with Exclusion Fencing	80	New Acres	N/A

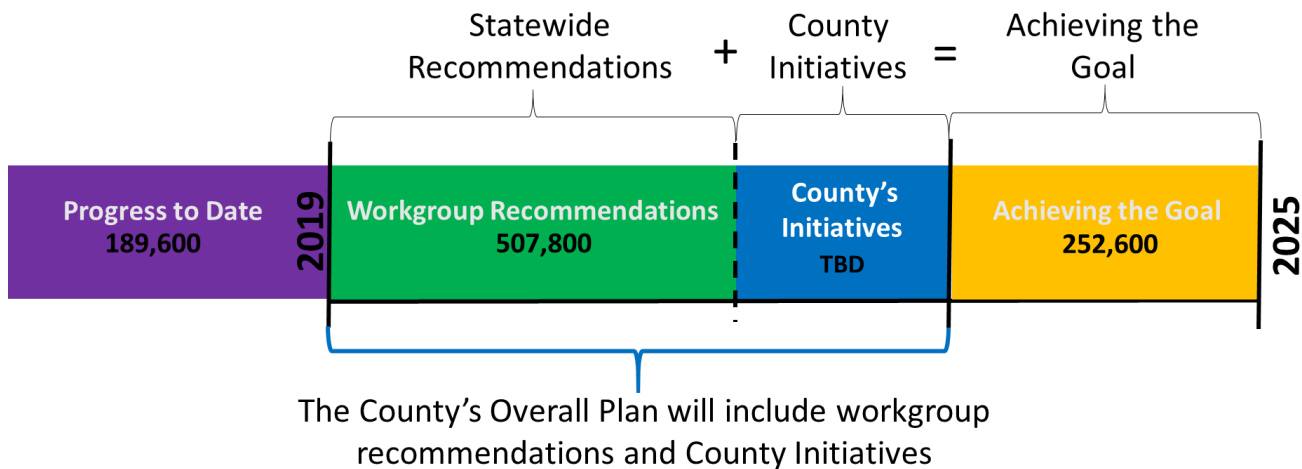
Stormwater BMP Implementation Amounts for Lackawanna County Based on State Workgroup Implementation Rate Recommendations

The stormwater BMPs and implementation rates provided below are based on the state recommendations identified in the Phase 3 WIP. The state recommendations were developed by the 12-member Stormwater Workgroup described on page I-5. The workgroup identified the below BMPs and implementation rates as obtainable goals for your county.

Detailed descriptions of each BMP listed in the chart below can be on the Best Management Practice Quick Reference Guide found here <https://pacleanwateracademy.remote-learner.net/course/view.php?id=431#section-2>.

Urban Riparian Zone			
MS4 Riparian Forest Buffers	25	New Acres	N/A
Non-MS4 Forest Buffers	70	New Acres	N/A
Woods and Pollinator Habitat			
Conservation Landscaping	185	New Acres	N/A
Urban Forest Planting	150	New Acres	N/A
Urban Tree Canopy			
Urban Tree Canopy	3	New Acres	N/A
Forest, Farm and Natural Areas Conservation			
Farmland Conservation	540	Total Acres	N/A
Forest Conservation	1,900	Total Acres	N/A
Wetland Conservation	100	Total Acres	N/A
Stream and Wetland Restoration			
Urban Stream Restoration	9,450	New Linear Feet	N/A
Non-urban Stream Restoration	3,800	New Linear Feet	N/A
Wetland Restoration	18	Acres	N/A
Control Measure for Illicit Discharge			
Advanced Grey Infrastructure (IDDE) Control	3,600	Acres Treated	10%
Industrial Stormwater			
Impervious Surface Reduction	10	Acres	N/A
Fertilizer Legislation			
Urban Nutrient Management	2,700	Acres	7%

Hypothetical Journey to a County Goal (Nitrogen)



The hypothetical journey is a depiction of the countywide goals and overall Pennsylvania water quality targets. Moreover, the figure above represents Lackawanna County's journey to clean water.

The nitrogen and phosphorus planning targets for Pennsylvania counties are broken down into local planning goals for each county. Added together, these goals will help Pennsylvania reach its assigned planning targets.

- The purple section represents the county's nitrogen reduction from 1985 through 2019. These are reductions that have already occurred through restoration efforts. These reductions do not count toward your planning goal for 2025.
- The green section depicts the estimated reductions that can be achieved through the state workgroup recommendations. This does not mean that you have to accept the state workgroup recommendations but serves as a starting point for your county. It is important to remember the state recommendations were developed as Pennsylvania's watershed-wide state recommendations.
- The blue section represents the County's initiatives that goes beyond the state workgroup recommendations. These could include practices that the state workgroups did not identify in their recommendations. This could also mean exceeding the state workgroups recommendations for a practice.
- Reductions from County Initiatives and the Statewide Workgroup Recommendations will be added together to form the County's comprehensive plan that will be submitted to DEP. The goal of the County's comprehensive plans is to reduce the orange "achieving the goal."
- The orange section is defined as the "Achieving the Goal" section. The goal to be achieved is a result of the blue and green sections added together, which forms the county's comprehensive plan. As more county initiatives are added, the orange bar will shrink until the county has met its nitrogen and phosphorus goals. Every county is expected to meet the orange bar, but that does not mean it will be achieved for every county.

The Next Steps in Completing Lackawanna County's Planning Process

There are two options that counties or regional groupings can choose to complete the orange "Achieving the Goal" portion of the above graphic.

- **Option 1:** Your county can choose to accept the State Workgroup Recommendations and the BMP Implementation Amounts provided in the above chart with no numerical changes. More BMPs can be added that will help you meet your county's priority initiatives. Adding these extra BMPs will help reduce the orange section of the above graphic. If you choose this option, you will then proceed with developing your CAP to identify how your county will implement these BMPs by utilizing the provided CAP templates.
- **Option 2:** Your county will take the Statewide Workgroup Recommendations and change the BMPs and/or BMP Implementation Rates depending on what your county identifies as priority BMPs. With this option, you will tailor each BMP, including all numerical changes. Depending on what BMPs you choose, the blue and green sections in the above graphic will change. You will need to ensure that the reductions meet at least what the Statewide Workgroup Recommendations would. Once you have identified your BMPs, you will then proceed with developing your CAP to identify how your county will implement these BMPs by utilizing the provided CAP templates.

The following is a list of questions that may help you choose which option is best for your county:

- What technical and financial resources are needed in order to meet the state recommendations?
- What are the programmatic changes needed in order for our county to meet its goal?
- Are the state recommendations realistic for our county? If no, how can we adjust the numbers to make the goal realistic?
- Are we able to exceed state recommendations? If so, how?
- Are there additional practices that we would like to focus on that the state did not identify?
- How does our county goal align with the State Workgroup Recommendations? Are there co-benefits that can be achieved with the workgroup recommendations?

The next step in your plan is to begin thinking through how you can accomplish your goals. This will require you to work in coordination with your local partners and your Region Support Team to begin completing your county's templates. The templates will capture what it is you are trying to achieve and how you will be able to achieve those goals.

Once your county has identified how it can achieve these goals, you will want to take the time to quantify your final goals. The state technical support team will assist you in helping to finalize your county's goals. Along with finalizing your county's goals, you will finalize your county templates that help to identify how the goals will be met. All pieces of the planning process will be submitted to DEP.

Phase 3 WIP County Resources Inventory Template

The **Phase 3 WIP County Resources Inventory Template** is to be used to capture all available and needed resources; including labor or staff resources, the dedication of land for practice installation and funding. It is intended to serve as an inventory of all available and needed resources to improve local water quality. These resources can include, but are not limited to dollars, land, staff time or match.

The template below identifies the amount of funding the Commonwealth currently has on record as having been allocated to your County from the listed existing state and federal funding sources for Chesapeake Bay restoration activities. The first step is to verify these amounts and add any additional local funding that was used for match to these programs.

This template can then be used in coordination with the **Phase 3 WIP Planning and Progress Template** to identify existing and needed resources to implement the priority initiatives and BMP installations identified in the scoping scenarios that will be created for countywide planners, in partnership with DEP’s technical support team.

County Resource Inventory Template PA Watershed Implementation Plan

County: Lackawanna

Program	Type of Resource	Source	2014-15	2015-16	2016-17	2017-18	2018-19	2019-20
Conservation District Fund Allocation Program • Match	Dollars	State	\$40,379	\$40,549	\$41,555	\$41,500	\$42,080	
ACT 13 - Unconventional Gas Well Funding • Match	Dollars	State	\$292,328	\$248,941	\$234,854	\$83,828	\$305,500	
Ch. 102/NPDES and Ch. 105 Program Permit Processing Fees • Match	Dollars	State	\$54,220	\$86,740	\$80,152	\$78,650	\$82,975	
Chesapeake Bay Program • Match	Dollars	Federal	\$135,685	\$145,860	\$139,152	\$420,676	\$141,572	
Dirt and Gravel Roads Program • Match	Dollars	State	\$212,021	\$210,096	\$206,317	\$217,735	\$212,324	
Natural Resource Conservation Service • Match	Dollars	Federal	\$37,872	\$397,443	\$552	\$325,821	\$20,567	
Growing Greener	Dollars	Federal	\$33,000	\$295,158	\$313,000	\$40,200	\$45,250	

<ul style="list-style-type: none"> • Match 								
	Dollars	State	\$2,095	\$2,489				
Environmental Education Grants								
<ul style="list-style-type: none"> • Match 								
Department of Agriculture	Dollars	State	\$443,597	\$426,160	\$312,778	\$484,282	\$544,673	
<ul style="list-style-type: none"> • Match 								
<ul style="list-style-type: none"> • Match 								