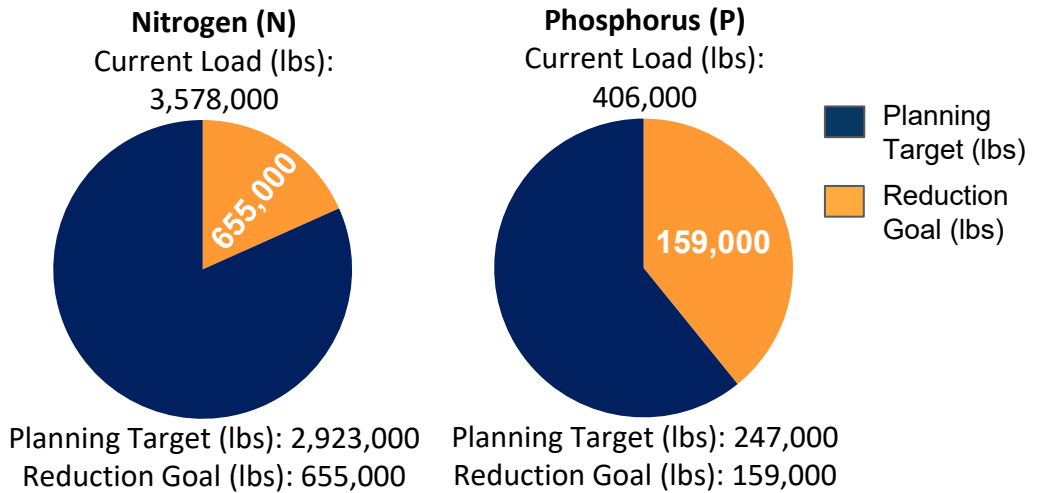


# Clearfield County, Pennsylvania

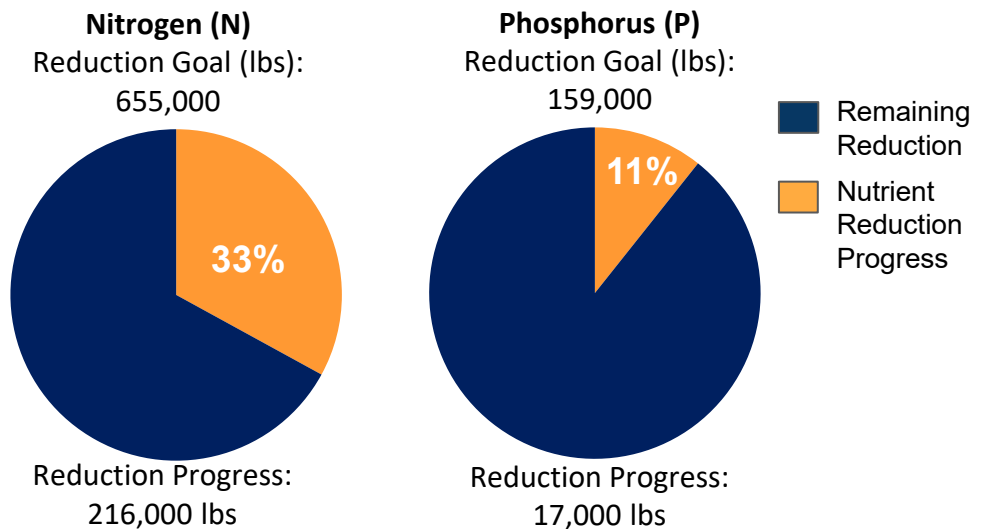
## Current Conditions

Clearfield County is one of 34 counties in Pennsylvania's Chesapeake Bay Watershed that have developed Countywide Action Plans. Current loading rates are 3.58M lbs of nitrogen and 406K lbs of phosphorus annually. By 2025 Clearfield County needs to reduce 655K lbs of nitrogen and 159K lbs of phosphorus.



## Pollutant Reduction Progress

By 2025, Clearfield County needs to reduce 655K lbs of nitrogen and 159K lbs of phosphorus. Clearfield County has developed a plan to reduce 216K lbs of nitrogen, which is 33% of the goal and 17K lbs of phosphorus, which is 11% of the goal.

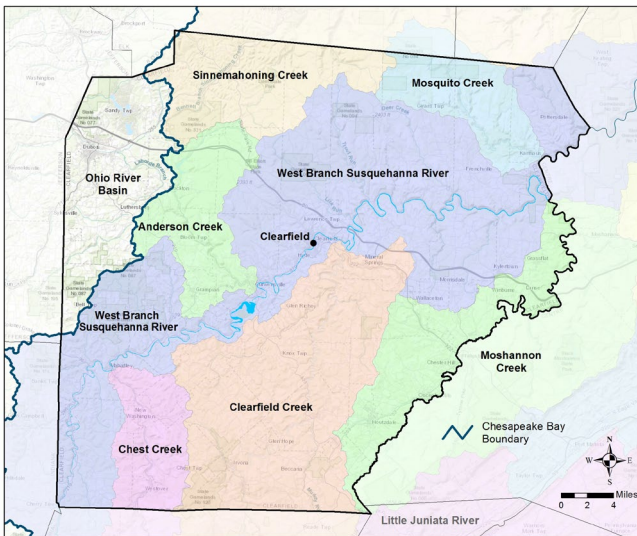


## Sector Reductions

Clearfield County has identified reductions within four sectors within their planning template: agriculture, developed, natural and septic. Projected land use changes and population changes results in no sector increases. Clearfield County has identified practices that result in total reductions of 216K lbs of nitrogen and 17K lbs of phosphorus.

Sector	Nitrogen (lbs.)	Phosphorus (lbs.)
Agriculture	-168,000	-9,000
Developed	-17,000	-1,000
Natural	-20,000	-7,000
Septic	-10,000	0
Wastewater	0	0
<b>Total Reductions</b>	<b>-216,000</b>	<b>-17,000</b>

# Clearfield County Watershed Map



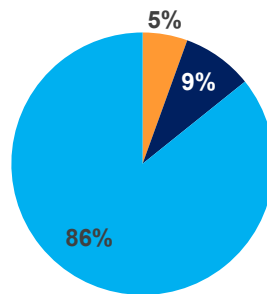
## Information About the Watersheds

Clearfield County contains 7 major watersheds: Sinnemahoning Creek, Mosquito Creek, Anderson Creek, Chest Creek, Clearfield Creek, Moshannon Creek, and West Branch Susquehanna River. Watersheds in Clearfield County have elevated levels of nitrogen, phosphorus, and sediment. Of the 1,785 total stream miles in Clearfield County, approximately 39% have degraded aquatic communities due to causes such as disturbance, siltation (excessive sediment), metals, nutrient pollution and others.

## County Land Use:

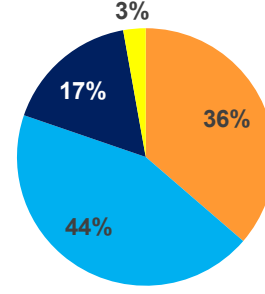
Clearfield County has a total acreage of 669,219 acres in the Bay Watershed. Agricultural land represents 5% of the total land with 36,990 total acres. Developed land represents another 9% of the total land in Clearfield County. Natural land, which is made up of forests, stream, and wetlands, represents the remaining 86% of the land in Clearfield County. Hay makes up a majority of the Agriculture sector with 16,251 acres. The developed sector is mostly Non-Municipal Separate Storm Sewer Systems (MS4s) (98%) 57,201 acres and a smaller portion of MS4 (2%) 1,115 acres.

**Clearfield County:**  
Total Acres: 669,219



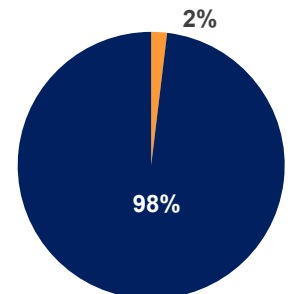
- Agriculture
- Developed
- Natural

**Agriculture:**  
Total Acres: 36,990



- Cropland
- Hay
- Pasture
- Other Ag

**Developed:**  
Total Acres: 58,315



- MS4
- Non-MS4

## Local Benefits:

Storm events are the number one way for nutrients and sediment to enter waterways. Increased runoff impacts: flooding, water quality, habitat, etc. Pollutants enter the waterways by two methods: overland runoff or leaching into groundwater.



Flooding affects safety, property, infrastructure, and economics.



Clearfield County relies on local water sources to supply drinking water to its residents.



Just like humans, Clearfield County's livestock depend on clean water.

## Learn more and Get Involved

To learn more about the Countywide Action Plans, visit DEPs Countywide Action Plans website: [dep.pa.gov/cap](http://dep.pa.gov/cap)

