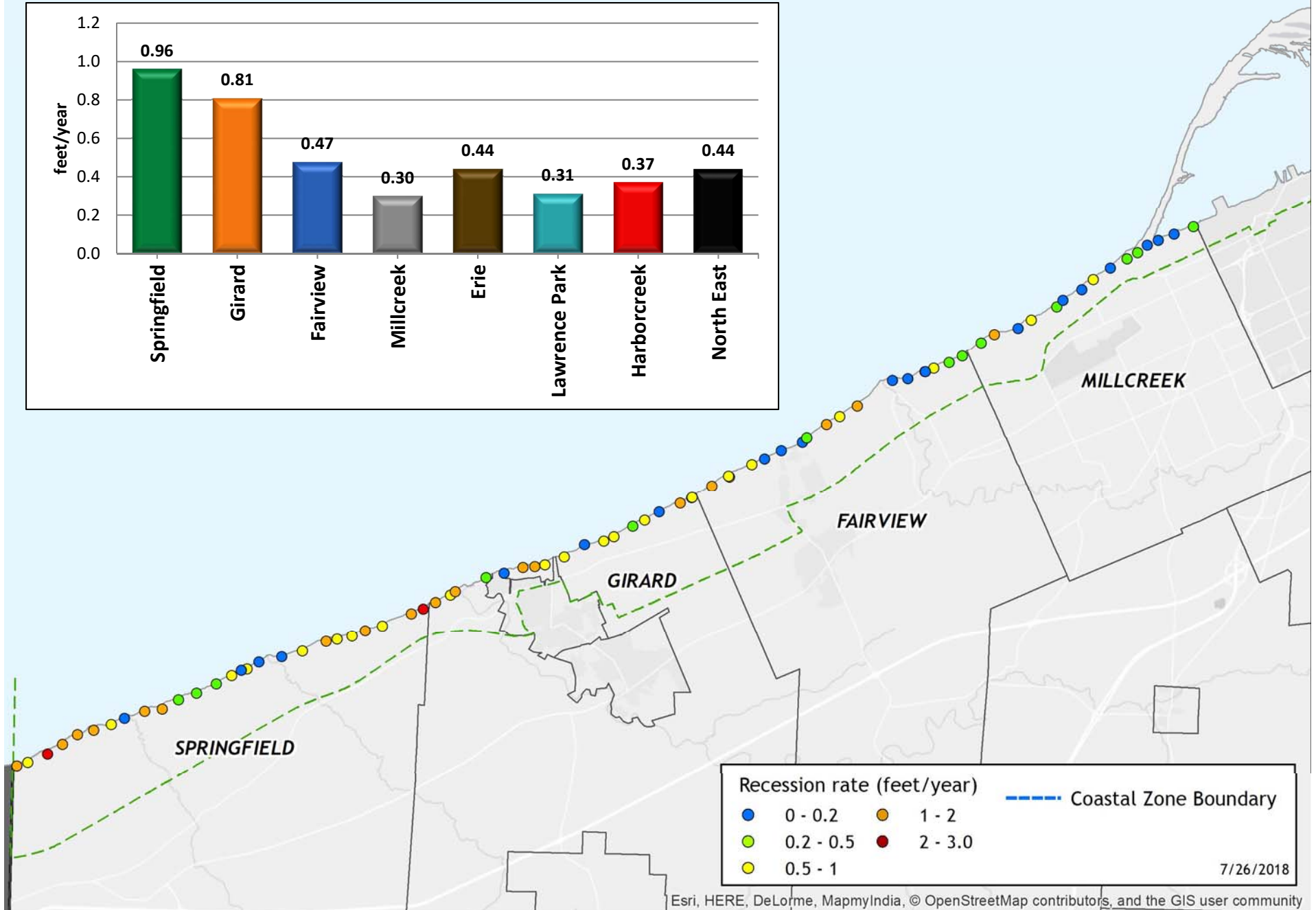
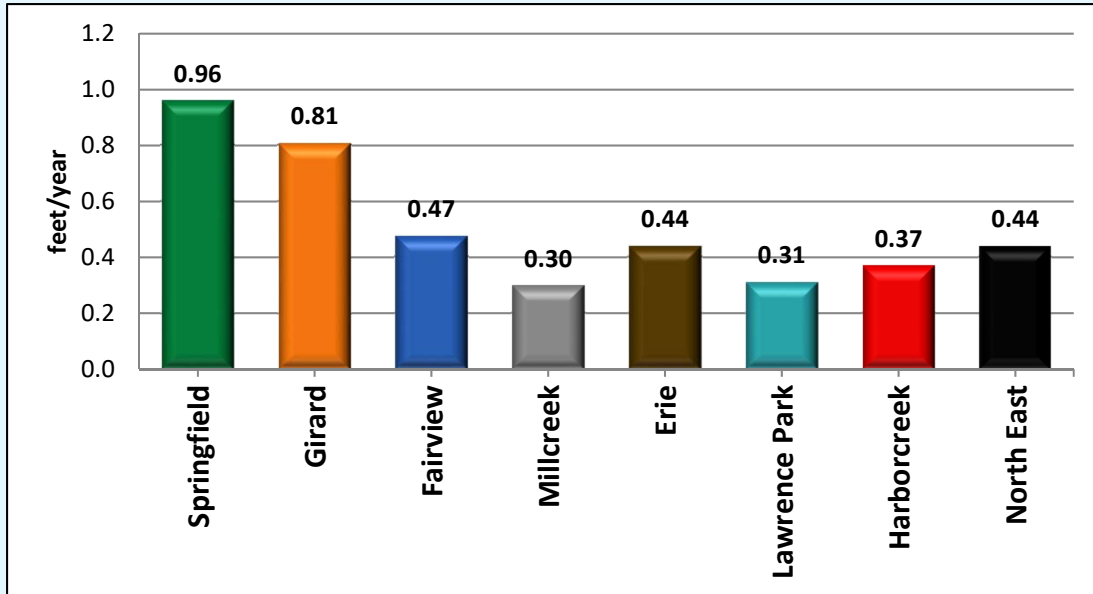
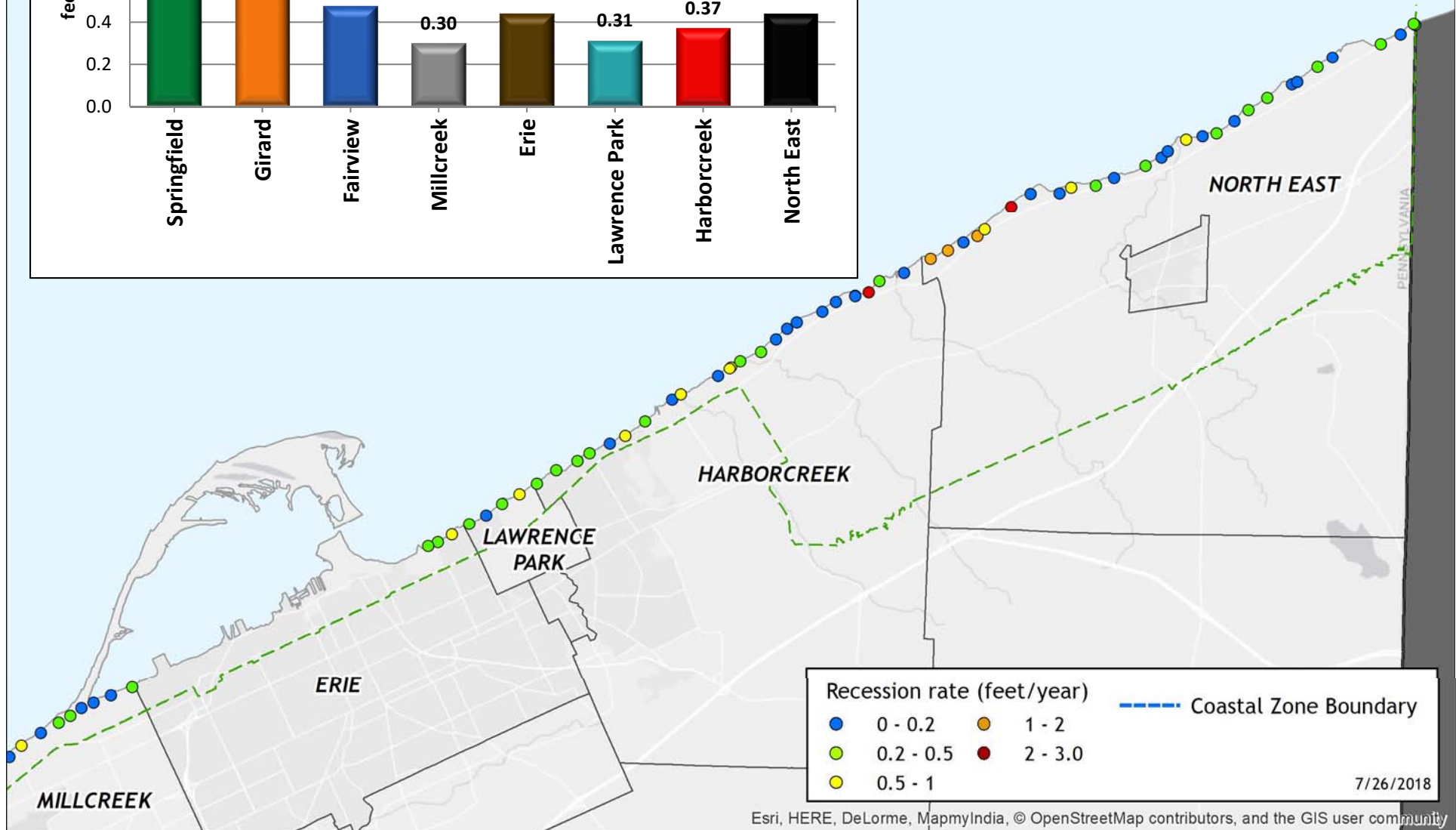
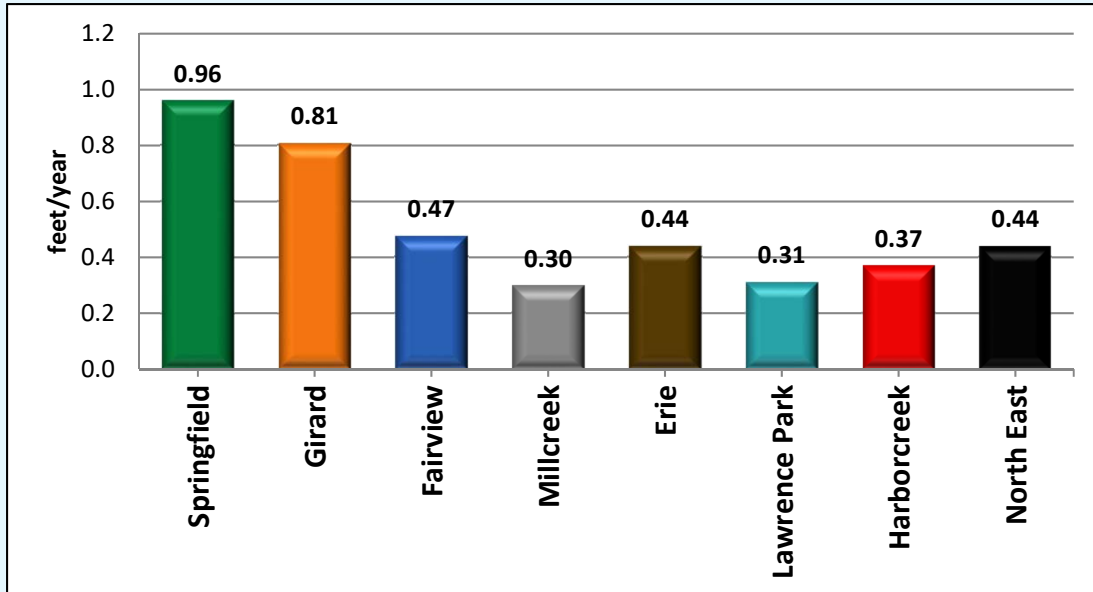


Average Municipality Recession Rates

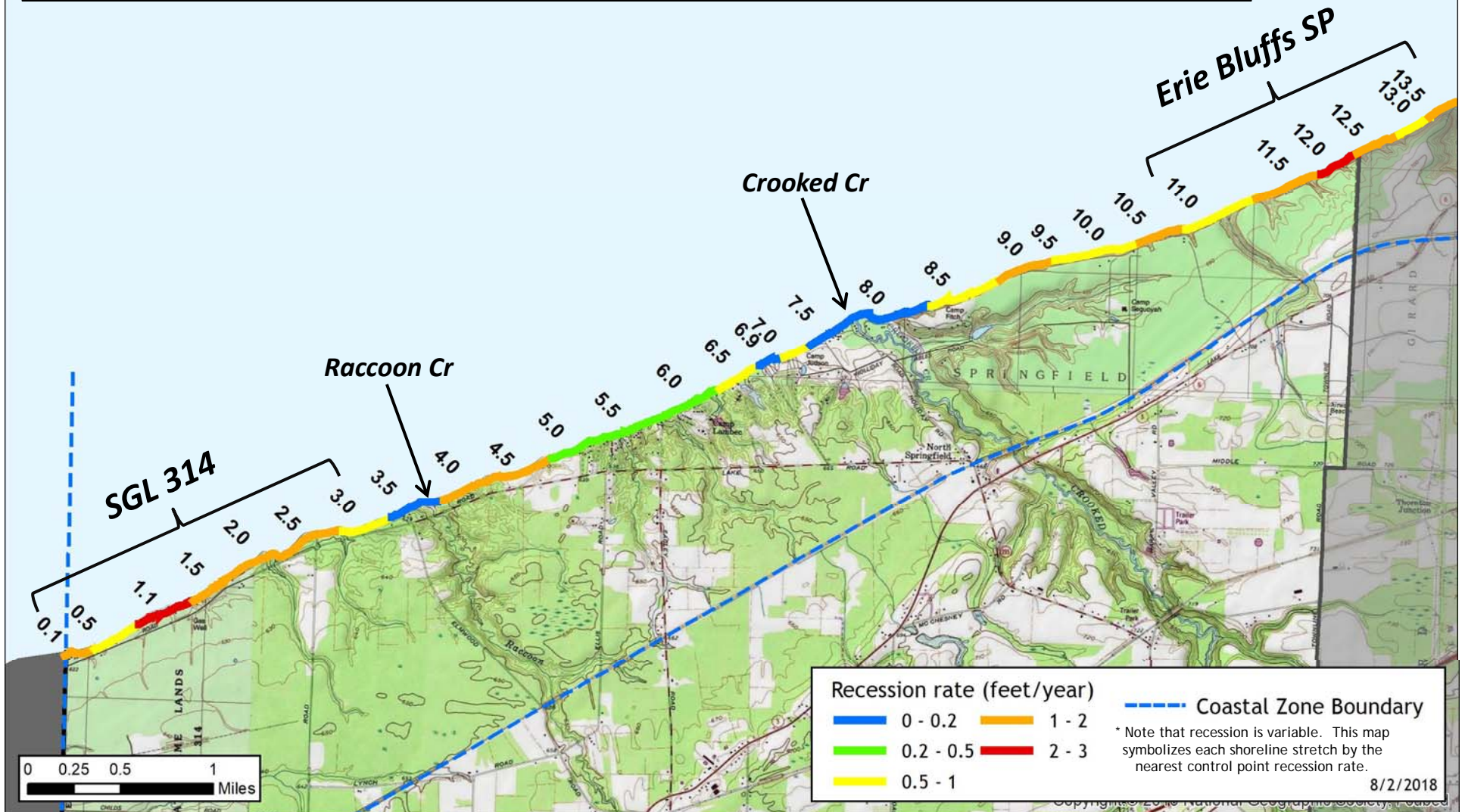
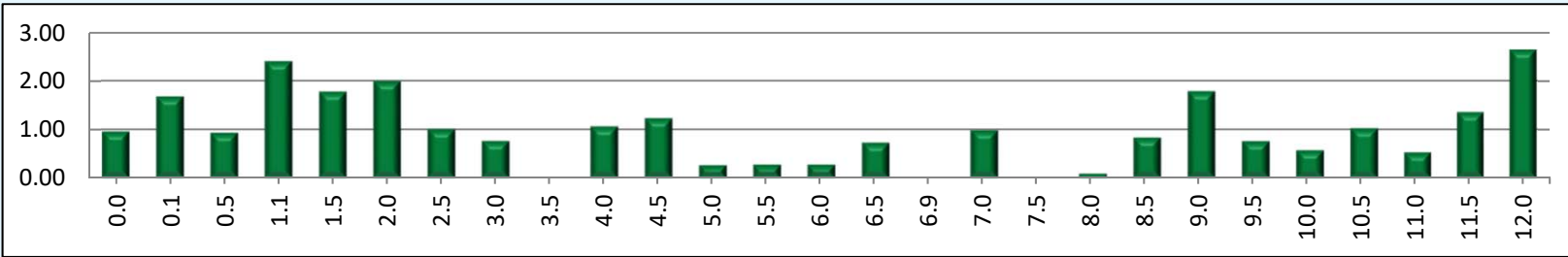


Average Municipality Recession Rates

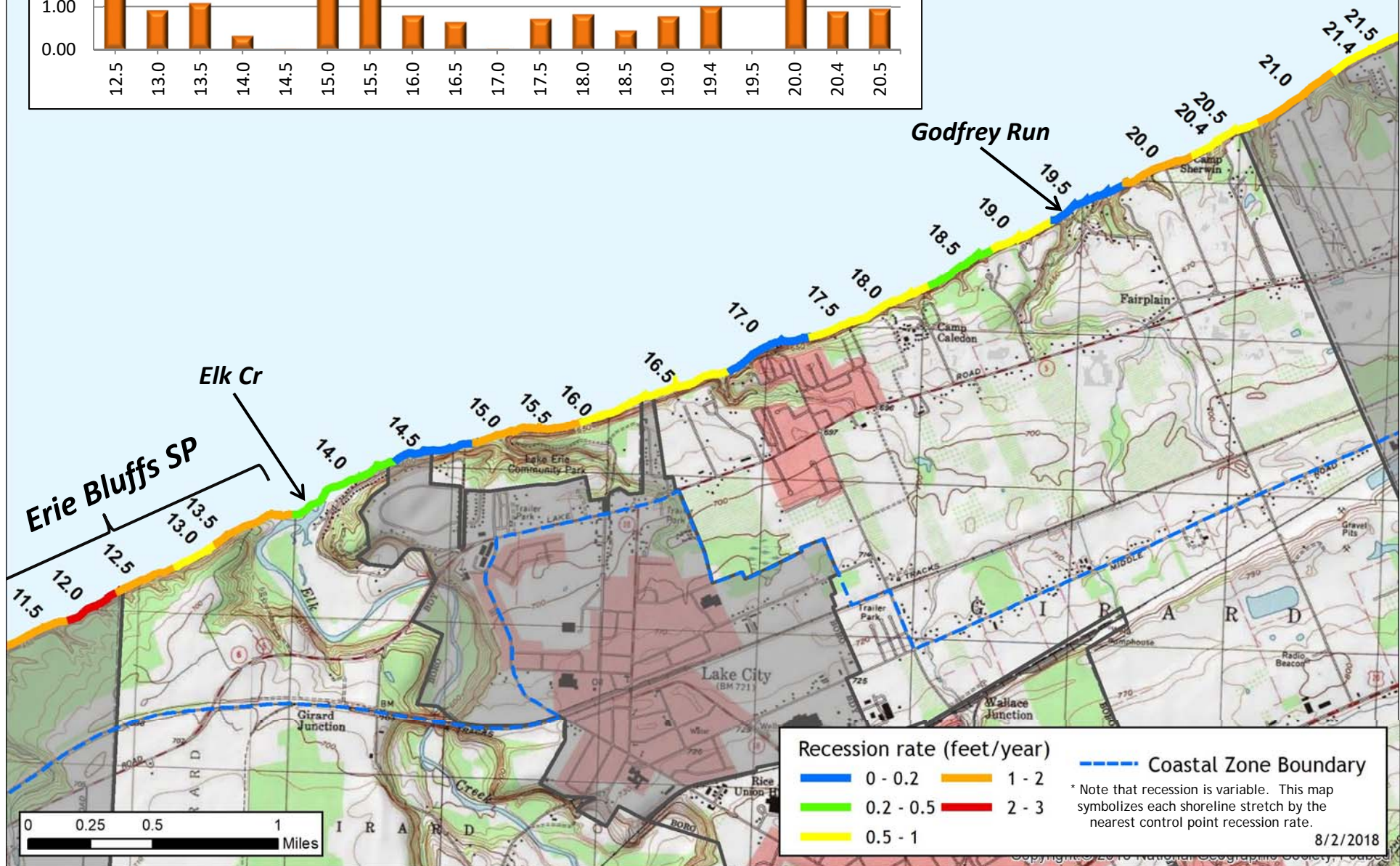
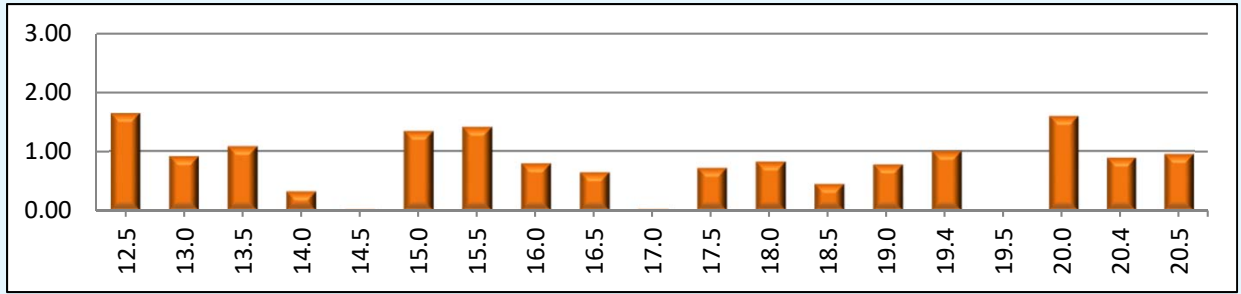


7/26/2018

SPRINGFIELD



GIRARD

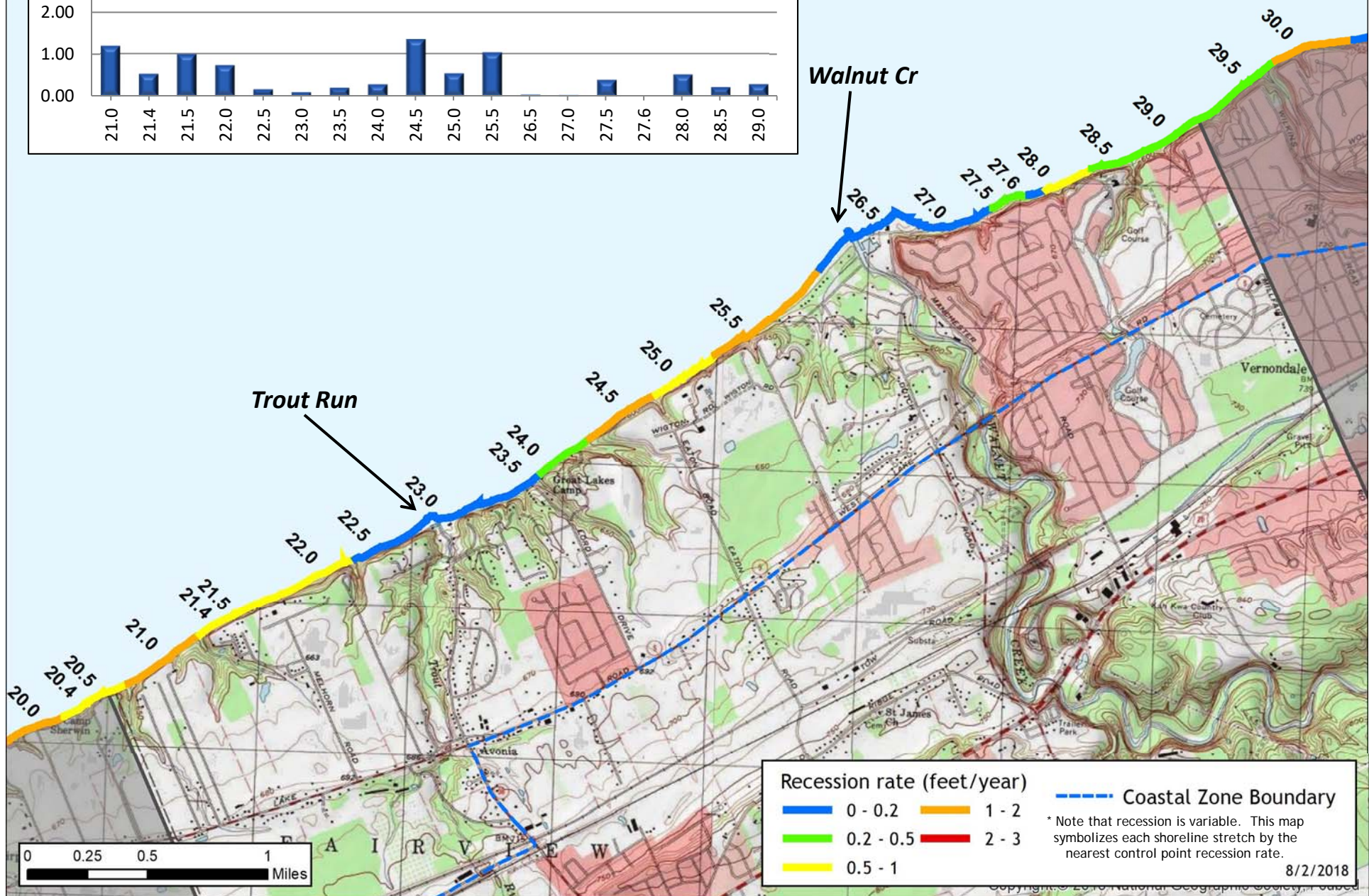
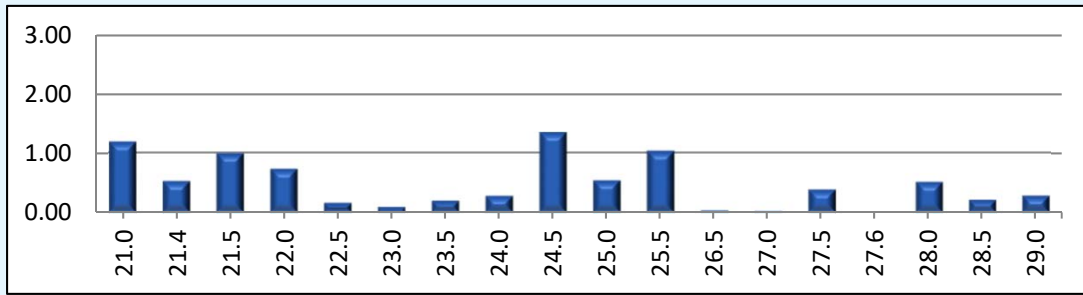


Recession rate (feet/year)		--- Coastal Zone Boundary
0 - 0.2	1 - 2	
0.2 - 0.5	2 - 3	
0.5 - 1		

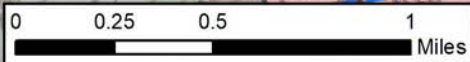
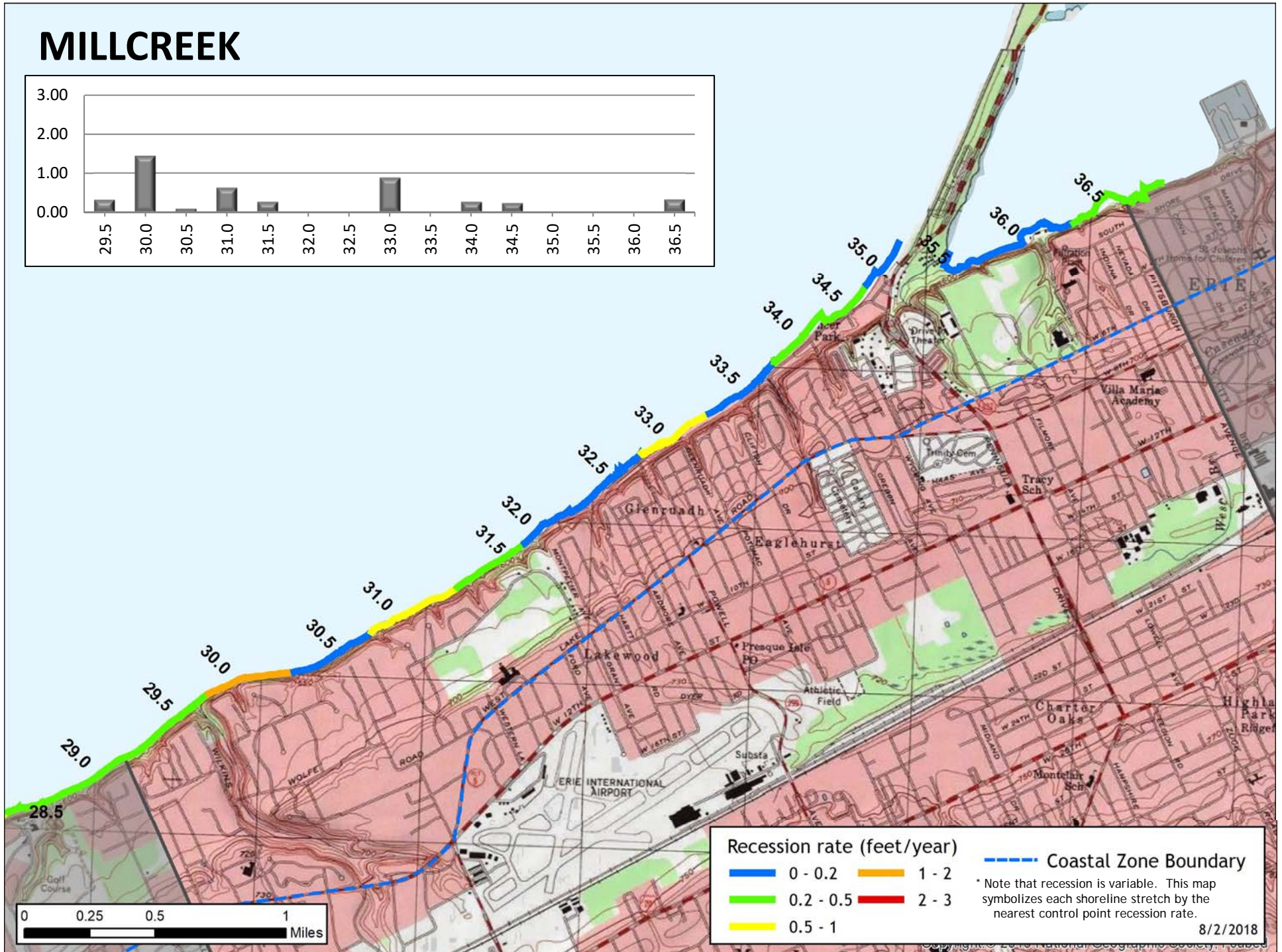
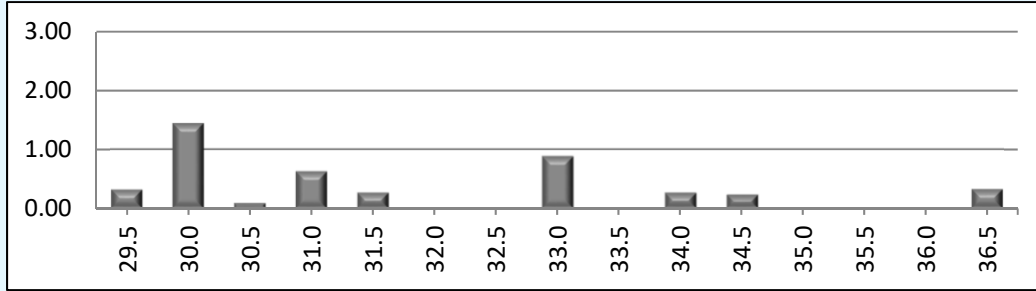
* Note that recession is variable. This map symbolizes each shoreline stretch by the nearest control point recession rate.

8/2/2018

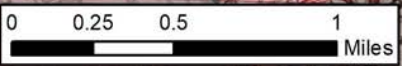
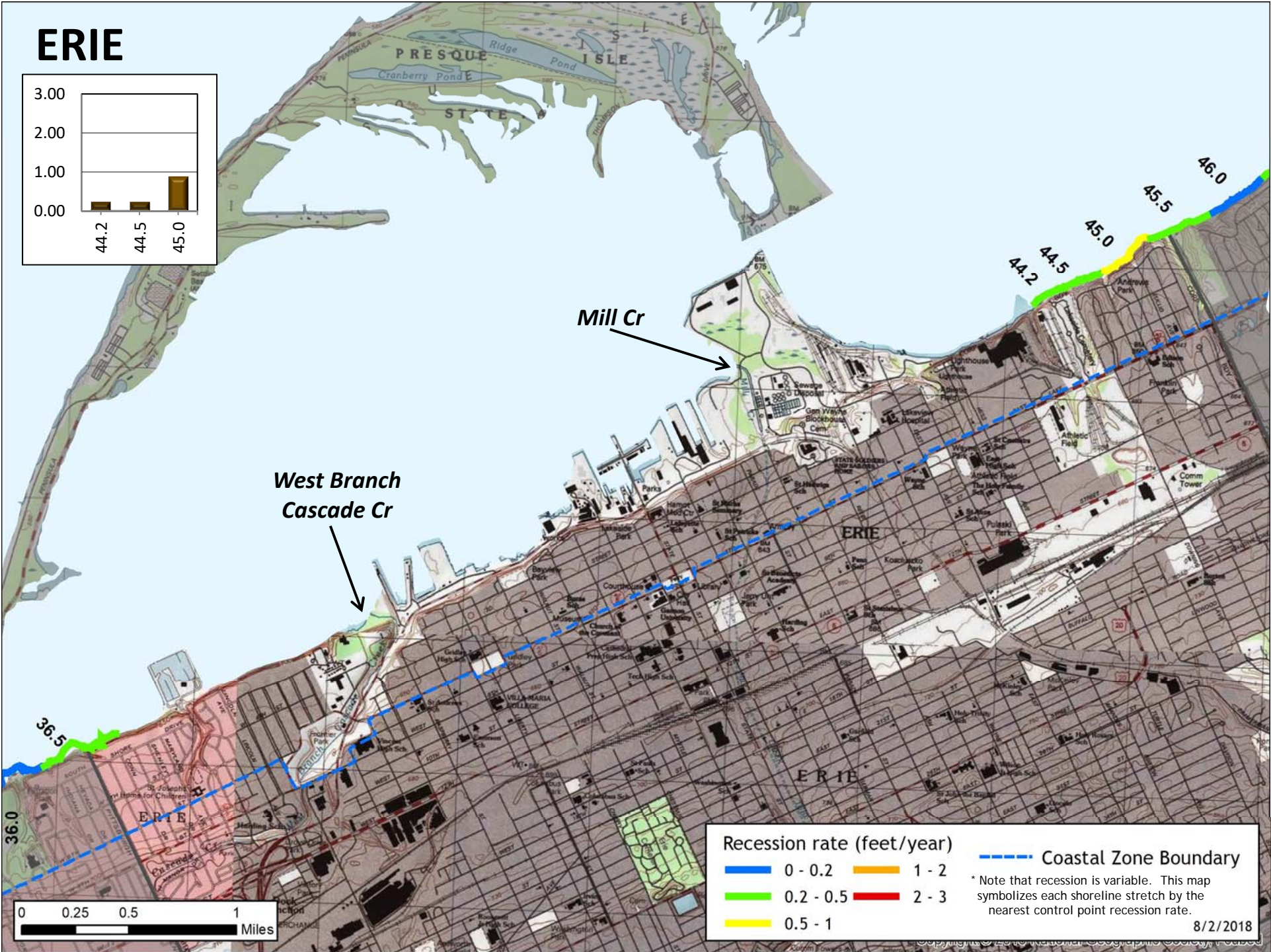
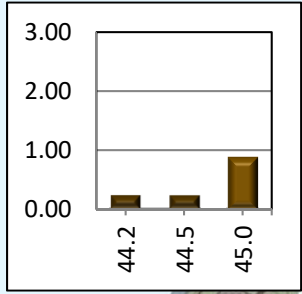
FAIRVIEW



MILLCREEK



ERIE



Recession rate (feet/year)

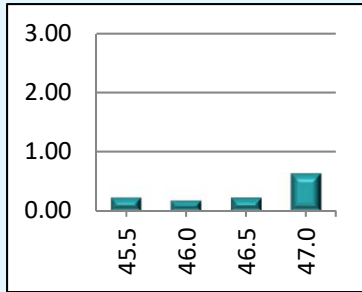
0 - 0.2	1 - 2
0.2 - 0.5	2 - 3
0.5 - 1	

--- Coastal Zone Boundary

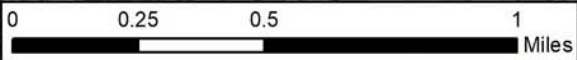
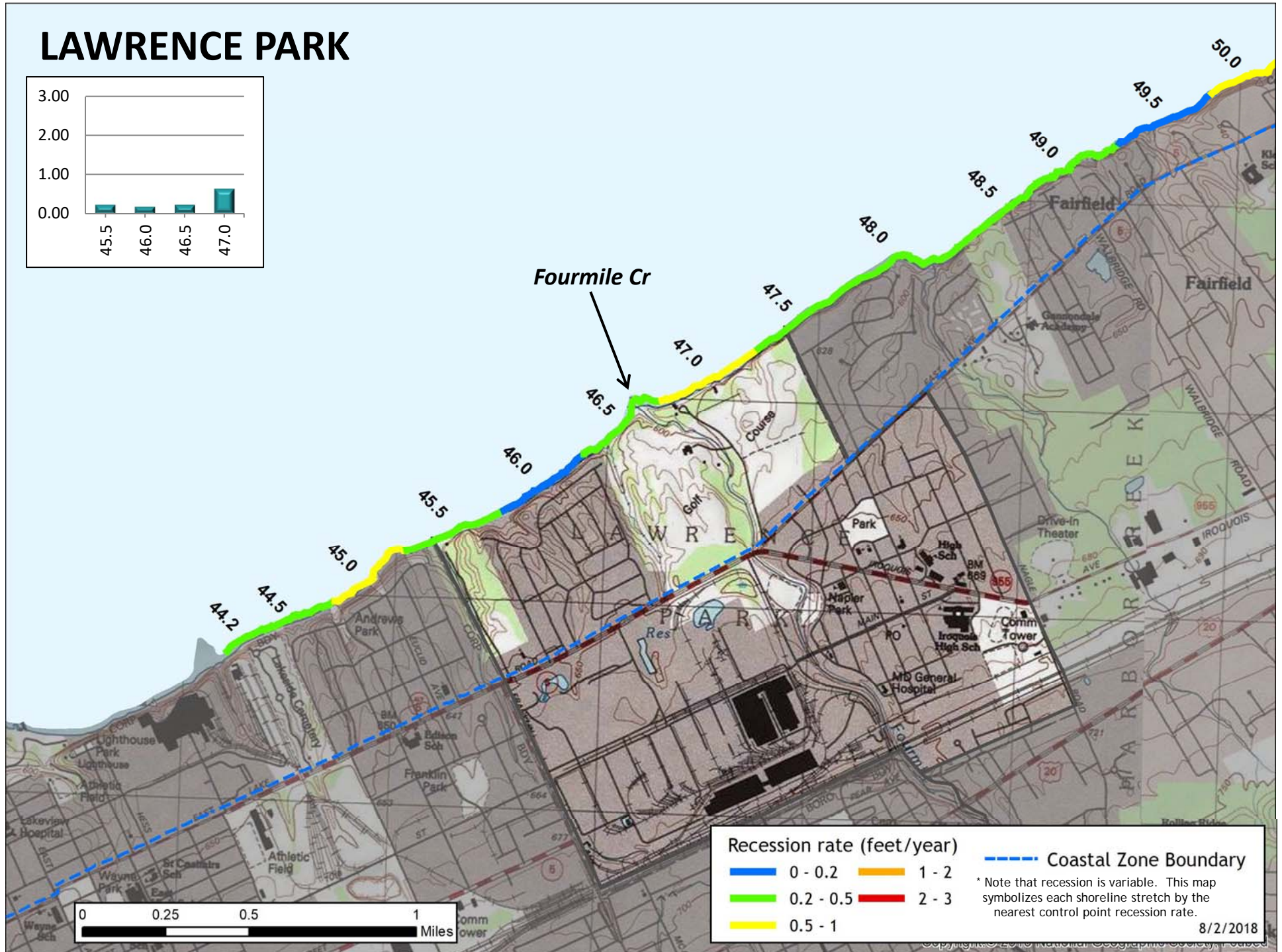
* Note that recession is variable. This map symbolizes each shoreline stretch by the nearest control point recession rate.

8/2/2018

LAWRENCE PARK



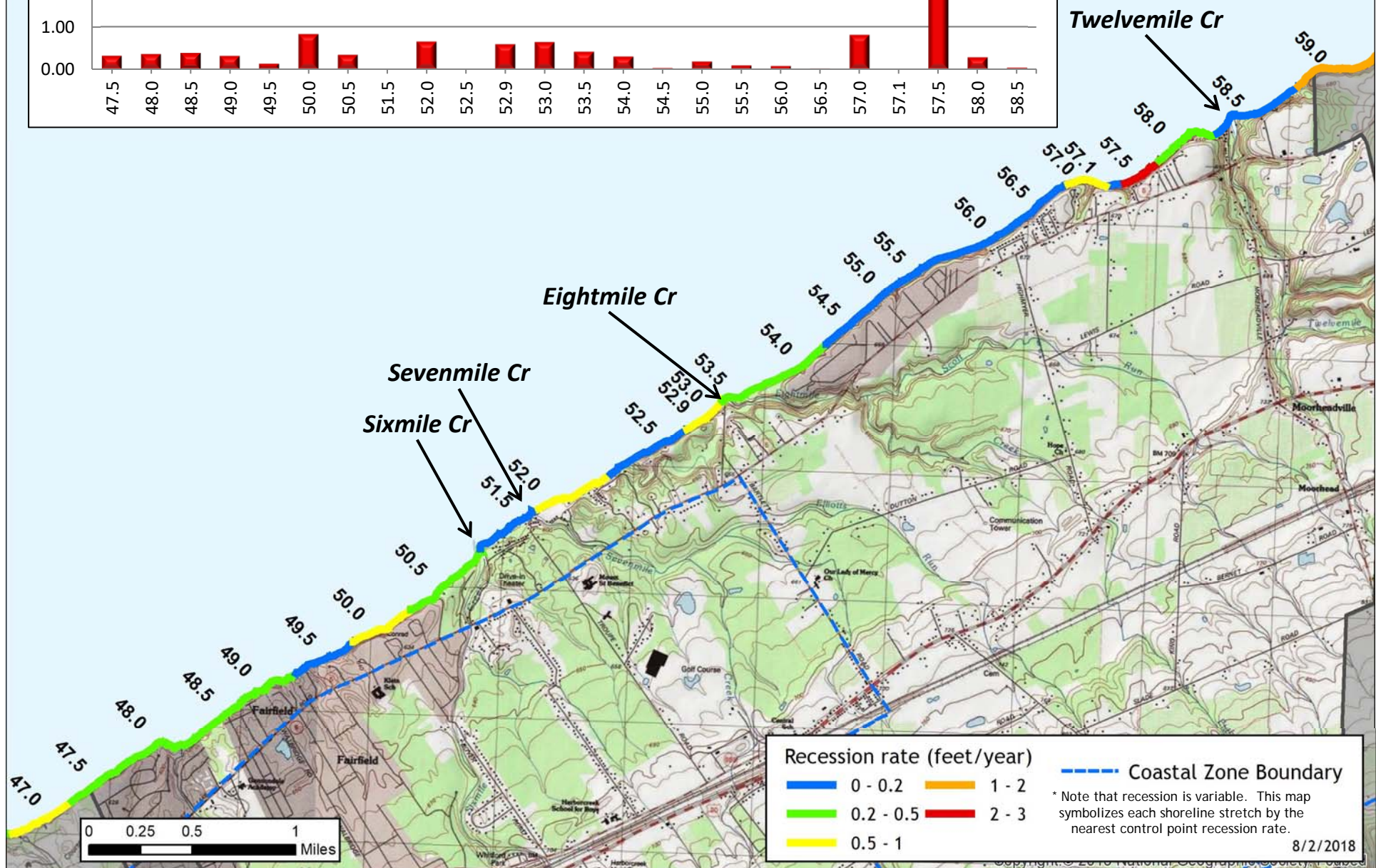
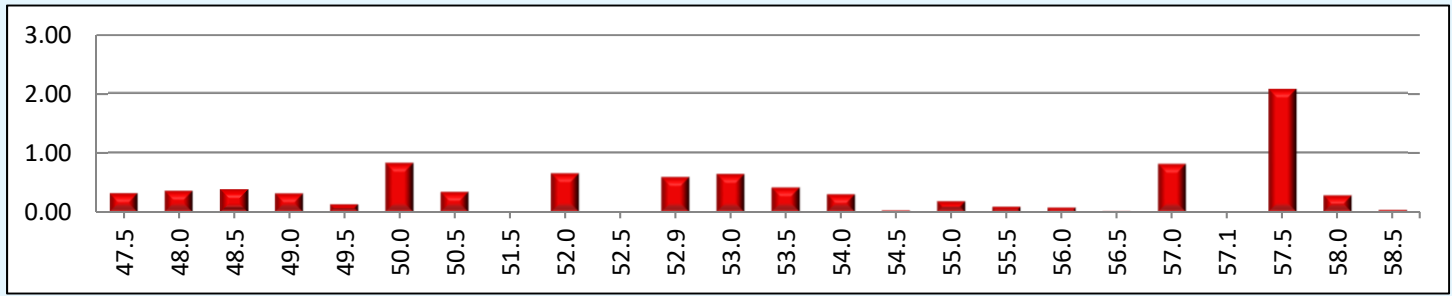
Fourmile Cr



Recession rate (feet/year)

— 0 - 0.2	— 1 - 2	- - - Coastal Zone Boundary
— 0.2 - 0.5	— 2 - 3	* Note that recession is variable. This map symbolizes each shoreline stretch by the nearest control point recession rate.
— 0.5 - 1		8/2/2018

HARBORCREEK



Recession rate (feet/year)

0 - 0.2	1 - 2
0.2 - 0.5	2 - 3
0.5 - 1	

--- Coastal Zone Boundary

* Note that recession is variable. This map symbolizes each shoreline stretch by the nearest control point recession rate.

8/2/2018

NORTH EAST

