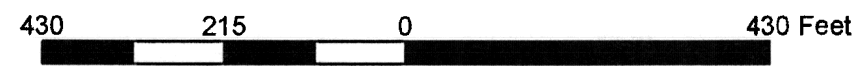
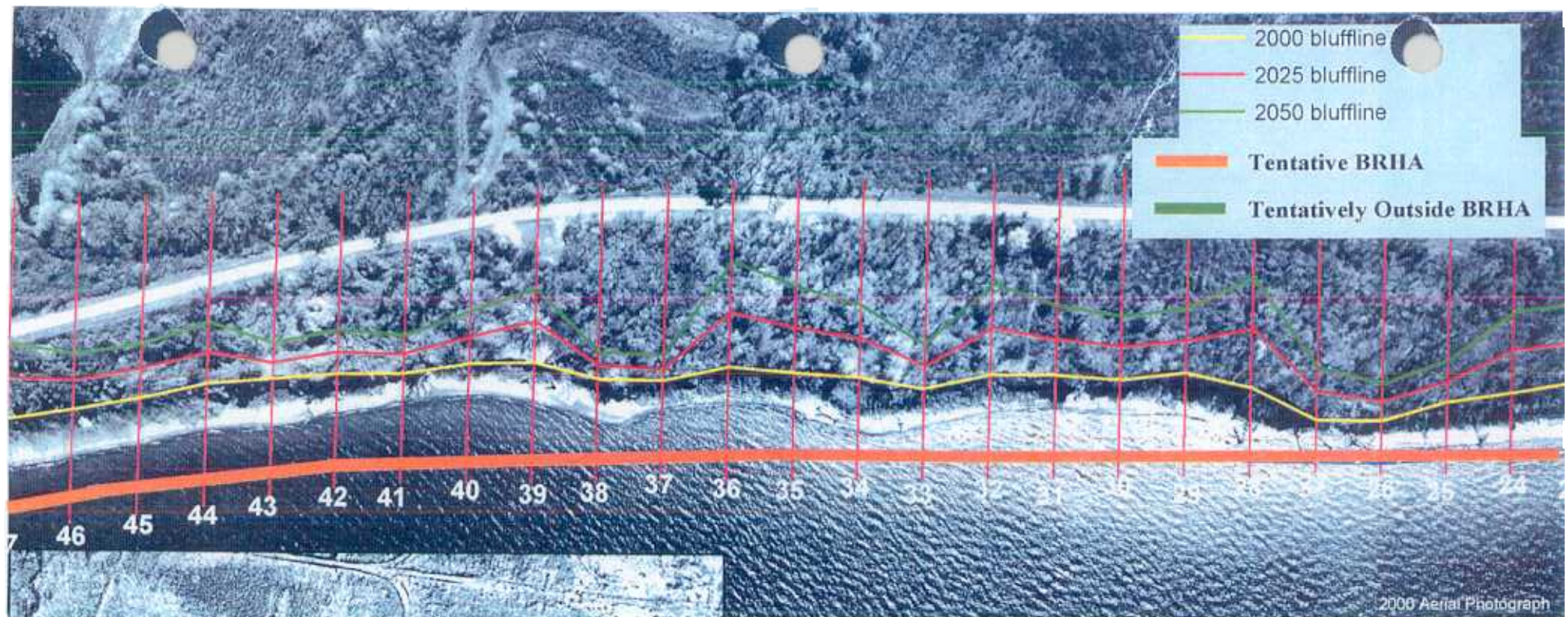


Transect	0	1	2	3	4	5	6
predicted recession by 2025	26.4	44.0	52.8	42.4	38.0	26.2	36.7
predicted recession by 2050	59.0	81.2	98.2	77.6	77.1	58.6	73.4
recession rate (ft/yr)	1.3	1.5	1.8	1.4	1.6	1.3	1.5

Transect	1	8	9	10	11	12	13
predicted recession by 2025	71.8	45.7	59.5	61.0	58.3	56.4	40.4
predicted recession by 2050	136.2	86.1	114.9	116.4	114.4	104.7	84.3
recession rate (ft/yr)	2.6	1.6	2.2	2.2	2.2	1.9	1.8

Transect	14	15	16	17	18	19	20
predicted recession by 2025	51.5	55.7	57.1	44.2	53.0	46.4	54.3
predicted recession by 2050	99.4	105.9	108.0	87.8	101.5	90.1	105.1
recession rate (ft/yr)	1.9	2.0	2.0	1.7	1.9	1.7	2.0

Transect	21	22	23
predicted recession by 2025	50.9	51.4	58.4
predicted recession by 2050	101.9	99.6	115.9
recession rate (ft/yr)	2.0	1.9	2.3

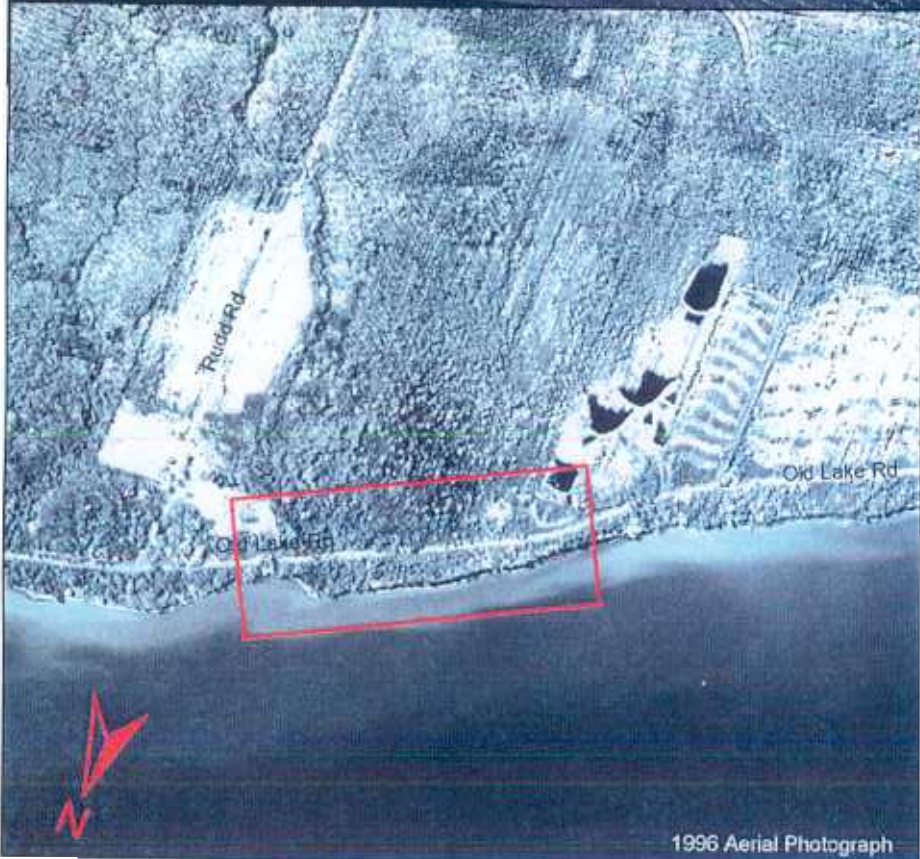
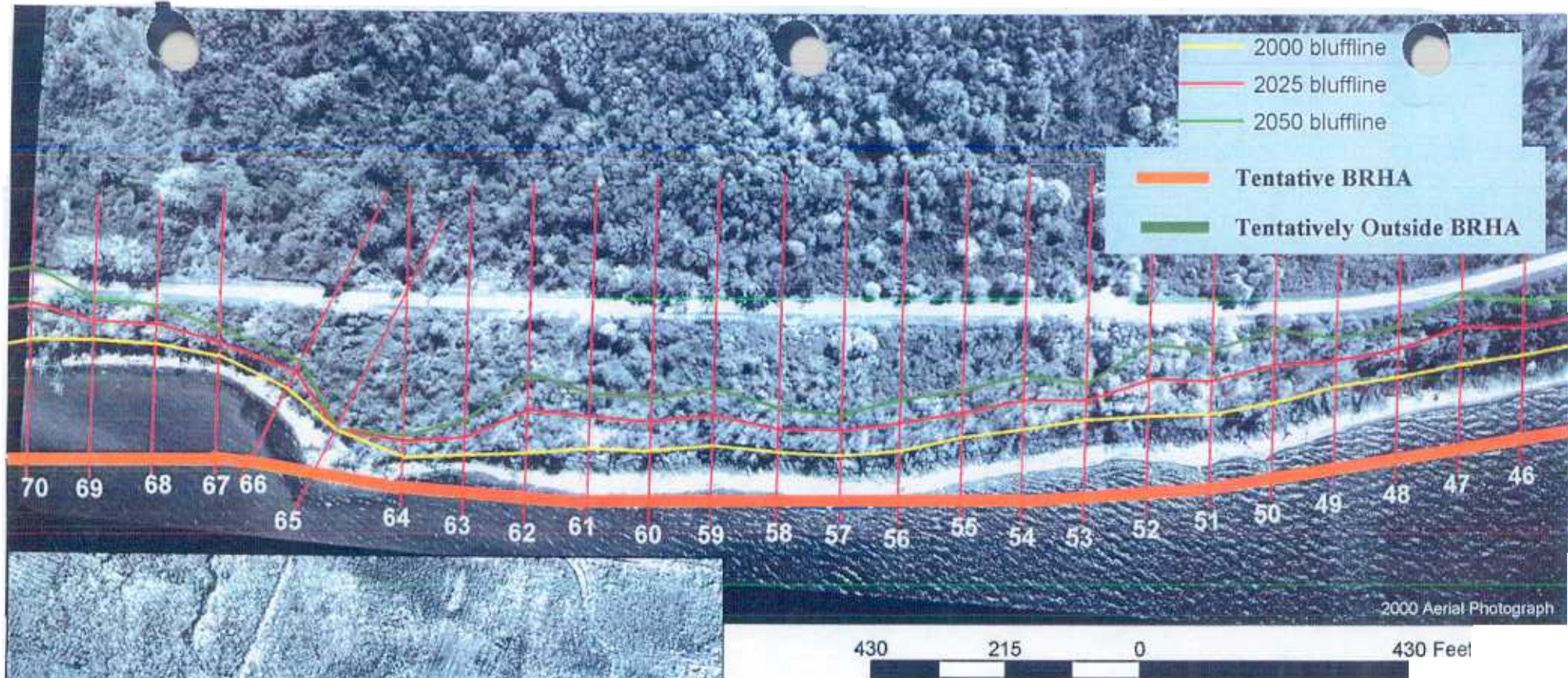


Transect	24	25	26	27	28	29	30
predicted recession by 2025	66.1	30.3	30.0	43.0	89.7	48.3	50.6
predicted recession by 2050	124.6	66.0	56.4	79.1	167.5	97.9	96.6
recession rate (ft/yr)	2.3	1.4	1.1	1.4	3.1	2.0	1.8

Transect	31	32	33	34	35	36	37
predicted recession by 2025	53.6	71.9	33.4	58.7	67.9	82.9	18.7
predicted recession by 2050	106.6	138.3	65.7	109.3	130.1	161.2	40.0
recession rate (ft/yr)	2.1	2.7	1.3	2.0	2.5	3.1	0.9

Transect	38	39	40	41	42	43	44
predicted recession by 2025	21.4	59.5	41.0	29.3	33.9	22.9	46.4
predicted recession by 2050	41.0	111.2	78.5	57.9	68.1	53.3	91.7
recession rate (ft/yr)	0.8	2.1	1.5	1.1	1.4	1.2	1.8

Transect	45	46
predicted recession by 2025	44.9	44.1
predicted recession by 2050	82.8	83.0
recession rate (ft/yr)	1.5	1.6

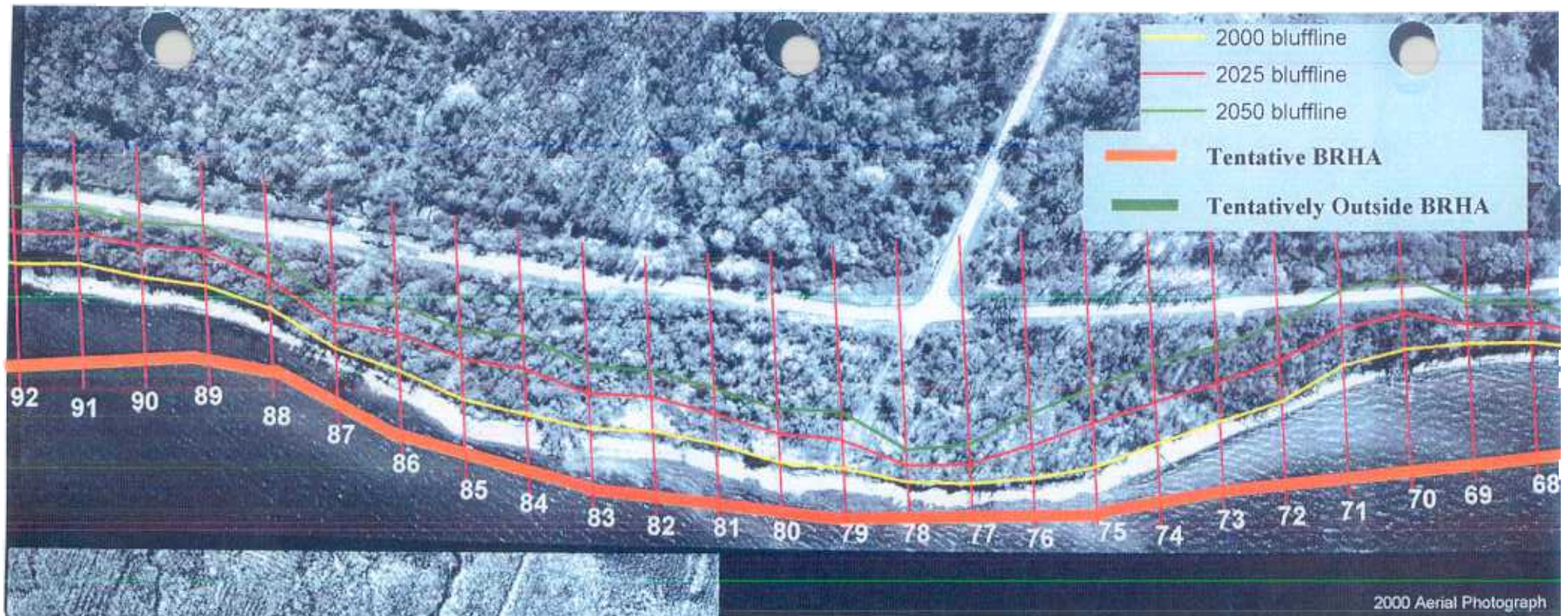


Transect	47	48	49	50	51	52	53
predicted recession by 2025	60.2	44.1	39.8	59.7	52.1	58.7	30.6
predicted recession by 2050	114.8	83.0	77.4	116.3	102.3	112.4	59.3
recession rate (ft/yr)	2.2	1.6	1.5	2.3	2.0	2.2	1.1

Transect	54	55	56	57	58	59	60
predicted recession by 2025	46.1	38.7	41.3	33.7	36.9	48.3	44.1
predicted recession by 2050	85.9	76.2	80.3	59.1	69.5	92.0	84.9
recession rate (ft/yr)	1.6	1.5	1.6	1.0	1.3	1.7	1.6

Transect	61	62	63	64	65	66	67
predicted recession by 2025	44.7	67.4	27.7	18.3	13.3	25.8	19.3
predicted recession by 2050	81.0	125.0	54.6	28.4	18.2	43.4	43.6
recession rate (ft/yr)	1.5	2.3	1.1	0.4	0.2	0.7	1.0

Transect	68
predicted recession by 2025	32.2
predicted recession by 2050	63.7
recession rate (ft/yr)	1.3

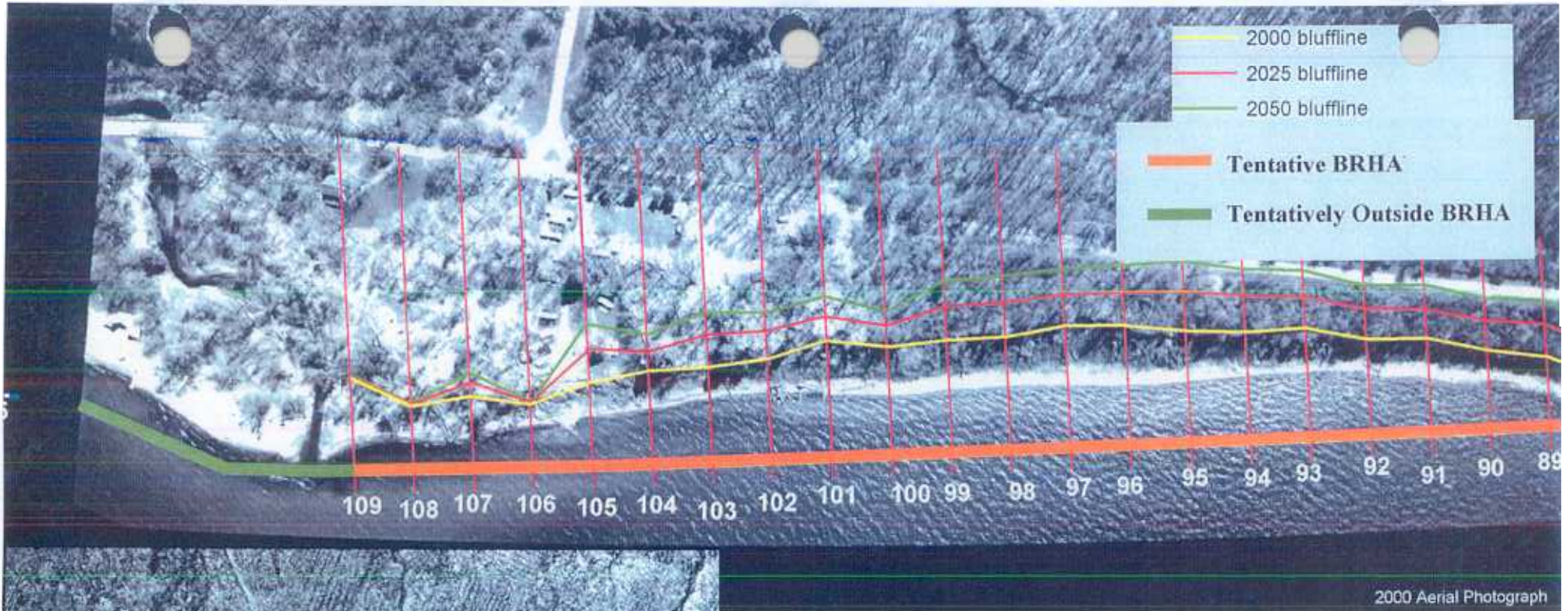


Transect	69	70	71	72	73	74	75
predicted recession by 2025	28.0	58.4	59.8	66.0	62.3	67.7	67.4
predicted recession by 2050	63.1	114.8	118.6	122.5	118.7	127.6	126.5
recession rate (ft/yr)	1.4	2.3	2.3	2.3	2.3	2.4	2.4

Transect	76	77	78	79	80	81	82
predicted recession by 2025	53.9	28.1	25.8	46.1	44.7	47.4	52.3
predicted recession by 2050	103.6	60.3	51.5	90.4	83.1	86.8	94.5
recession rate (ft/yr)	2.0	1.3	1.0	1.8	1.5	1.6	1.7

Transect	83	84	85	86	87	88	89
predicted recession by 2025	55.9	70.7	63.4	58.7	40.7	45.2	53.8
predicted recession by 2050	100.5	123.7	110.4	103.3	72.8	81.6	94.3
recession rate (ft/yr)	1.8	2.1	1.9	1.8	1.3	1.5	1.6

Transect	90
predicted recession by 2025	49.7
predicted recession by 2050	87.5
recession rate (ft/yr)	1.5

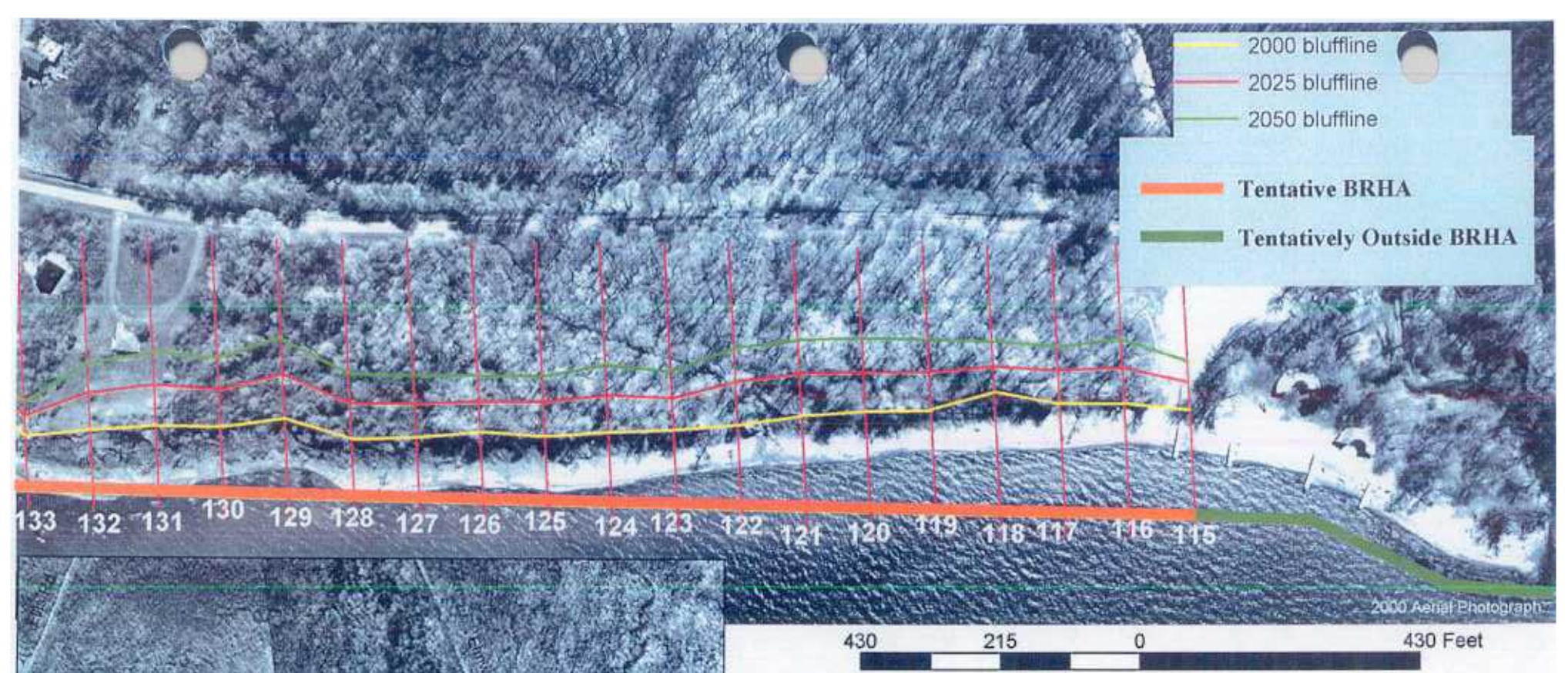


Transect	91	92	93	94	95	96	97
predicted recession by 2025	47.8	50.9	49.7	58.5	64.0	53.2	51.6
predicted recession by 2050	88.6	89.2	94.4	104.4	113.1	96.7	93.7
recession rate (ft/yr)	1.6	1.5	1.8	1.8	2.0	1.7	1.7

Transect	98	99	100	101	102	103	104
predicted recession by 2025	57.1	57.5	34.8	38.7	45.3	53.5	32.7
predicted recession by 2050	99.1	97.5	60.3	73.4	76.4	91.2	60.3
recession rate (ft/yr)	1.7	1.6	1.0	1.4	1.2	1.5	1.1

Transect	105	106	107	108	109	110	111
predicted recession by 2025	56.7	0.0	29.9	0.0	0.0		
predicted recession by 2050	99.6	0.0	51.5	0.0	0.0		
recession rate (ft/yr)	1.7	0.0	0.9	0.0	0.0	discard	discard

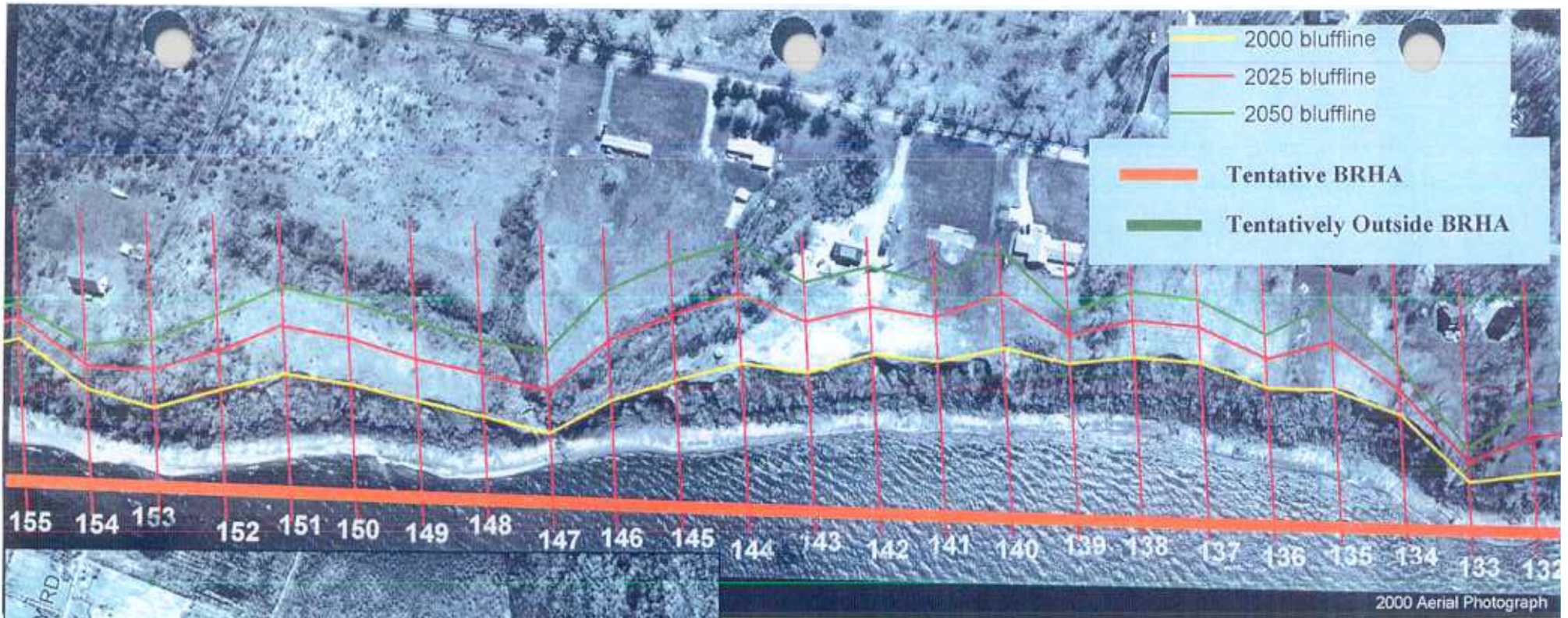
No measurable change in bluff location, but instability and/or signs of bluff recession were observed near transect, therefore this transect is in a Bluff Recession Hazard Area



Transect	112	113	114	115	116	117	118
predicted recession by 2025				41.7	53.8	48.5	37.3
predicted recession by 2050				75.1	99.2	88.6	78.5
recession rate (ft/yr)	discard	discard	discard	1.3	1.8	1.6	1.6

Transect	119	120	121	122	123	124	125
predicted recession by 2025	57.9	60.0	65.1	65.2	46.4	56.6	50.7
predicted recession by 2050	107.5	111.8	117.2	116.3	88.1	103.5	92.0
recession rate (ft/yr)	2.0	2.1	2.1	2.0	1.7	1.9	1.7

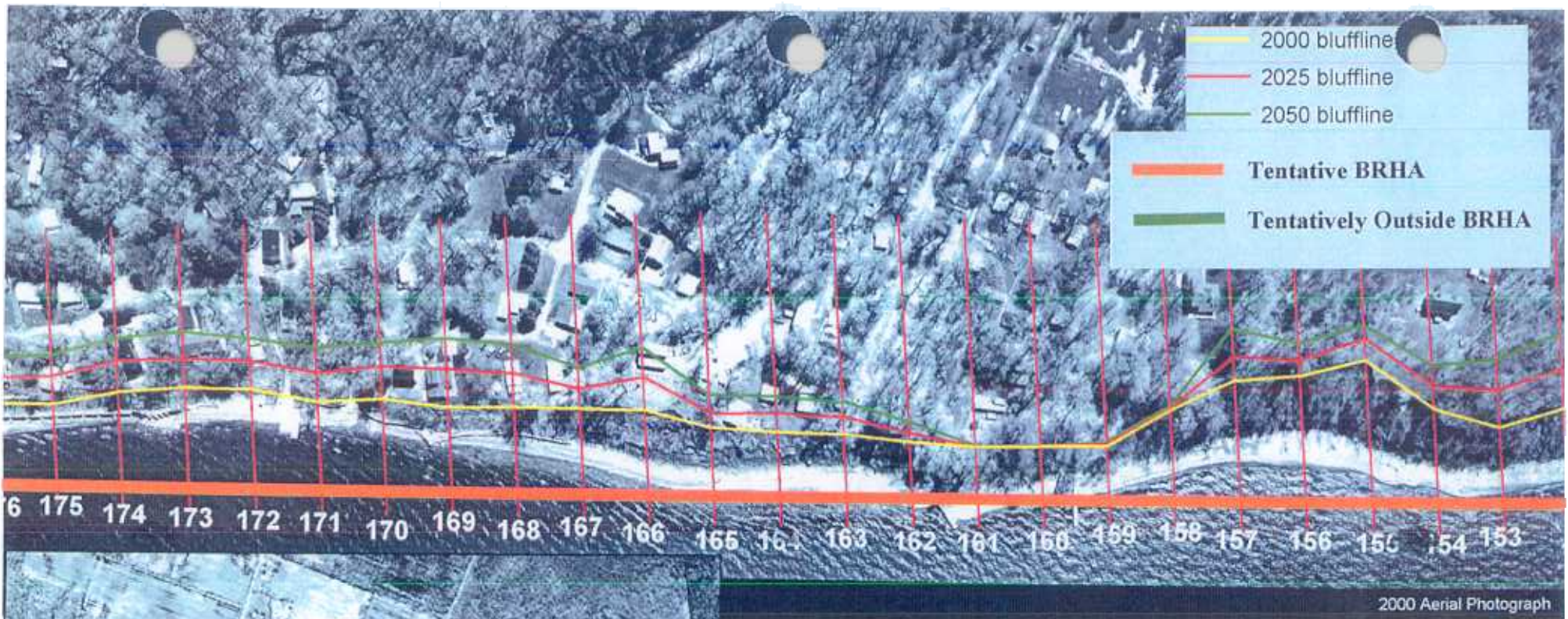
Transect	126	127	128	129	130	131	132
predicted recession by 2025	47.0	50.6	54.1	65.6	56.0	61.6	56.4
predicted recession by 2050	86.8	93.0	99.8	122.6	103.6	112.4	102.0
recession rate (ft/yr)	1.6	1.7	1.8	2.3	1.9	2.0	1.8



Transect	133	134	135	136	137	138	139
predicted recession by 2025	28.7	35.8	70.3	44.1	53.0	55.7	37.3
predicted recession by 2050	51.3	73.4	131.5	80.2	95.4	100.2	78.5
recession rate (ft/yr)	0.9	1.5	2.4	1.4	1.7	1.8	1.6

Transect	140	141	142	143	144	145	146
predicted recession by 2025	84.7	65.4	70.5	76.0	104.0	98.9	90.7
predicted recession by 2050	150.9	118.9	131.4	136.4	183.1	178.2	167.0
recession rate (ft/yr)	2.6	2.1	2.4	2.4	3.2	3.2	3.1

Transect	147	148	149	150	151	152	153
predicted recession by 2025	66.0	61.4	64.3	66.9	73.1	58.3	55.5
predicted recession by 2050	123.6	114.6	120.2	125.5	132.6	112.1	102.7
recession rate (ft/yr)	2.3	2.1	2.2	2.3	2.4	2.2	1.9

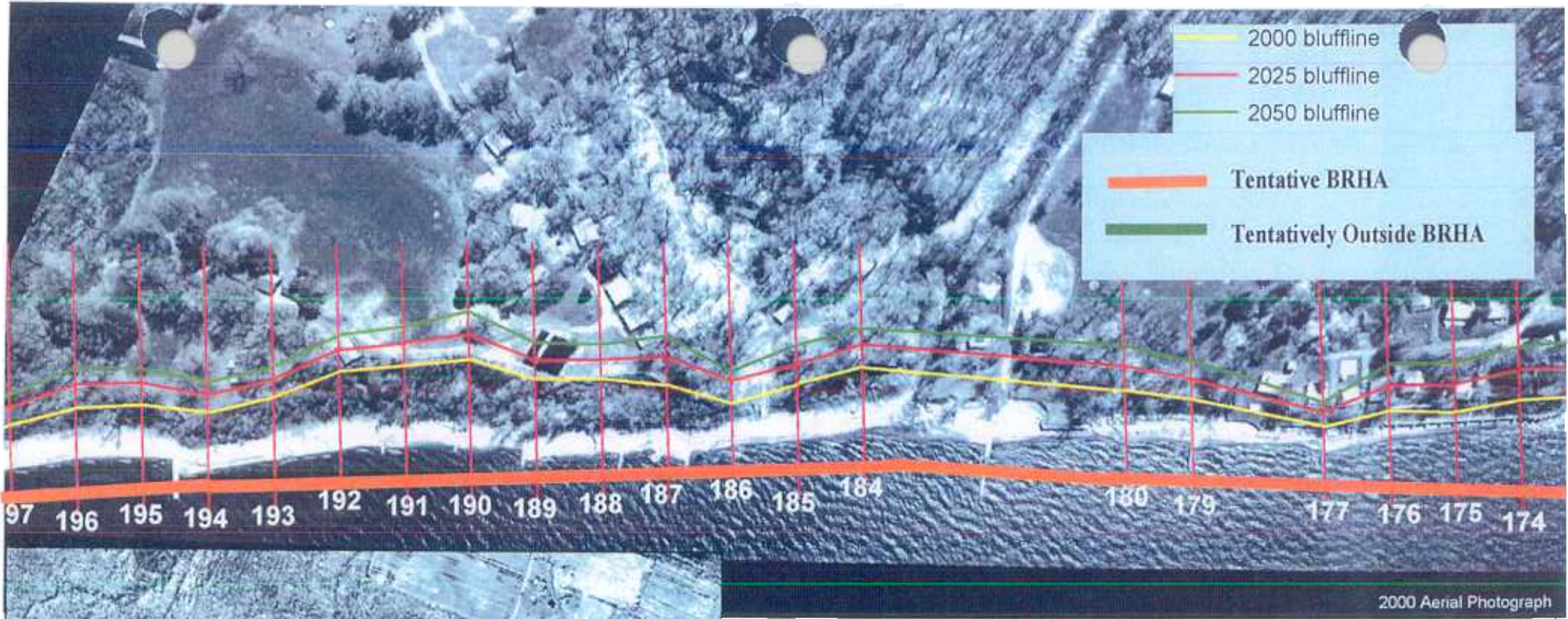


Transect	154	155	156	157	158	159	160
predicted recession by 2025	33.9	45.0	24.0	47.6	0.0	0.0	0.0
predicted recession by 2050	65.0	81.8	48.7	86.9	0.0	0.0	0.0
recession rate (ft/yr)	1.2	1.5	1.0	1.6	0.0	0.0	0.0

Transect	161	162	163	164	165	166	167
predicted recession by 2025	0.0	19.7	24.6	27.5	21.7	52.0	30.0
predicted recession by 2050	0.0	31.0	48.4	52.5	49.2	95.7	61.2
recession rate (ft/yr)	0.0	0.5	0.9	1.0	1.1	1.7	1.2

Transect	168	169	170	171	172	173	174
predicted recession by 2025	51.9	59.3	48.3	46.8	31.4	44.8	47.6
predicted recession by 2050	94.4	105.5	86.2	85.2	54.6	83.8	82.4
recession rate (ft/yr)	1.7	1.9	1.5	1.5	0.9	1.6	1.4

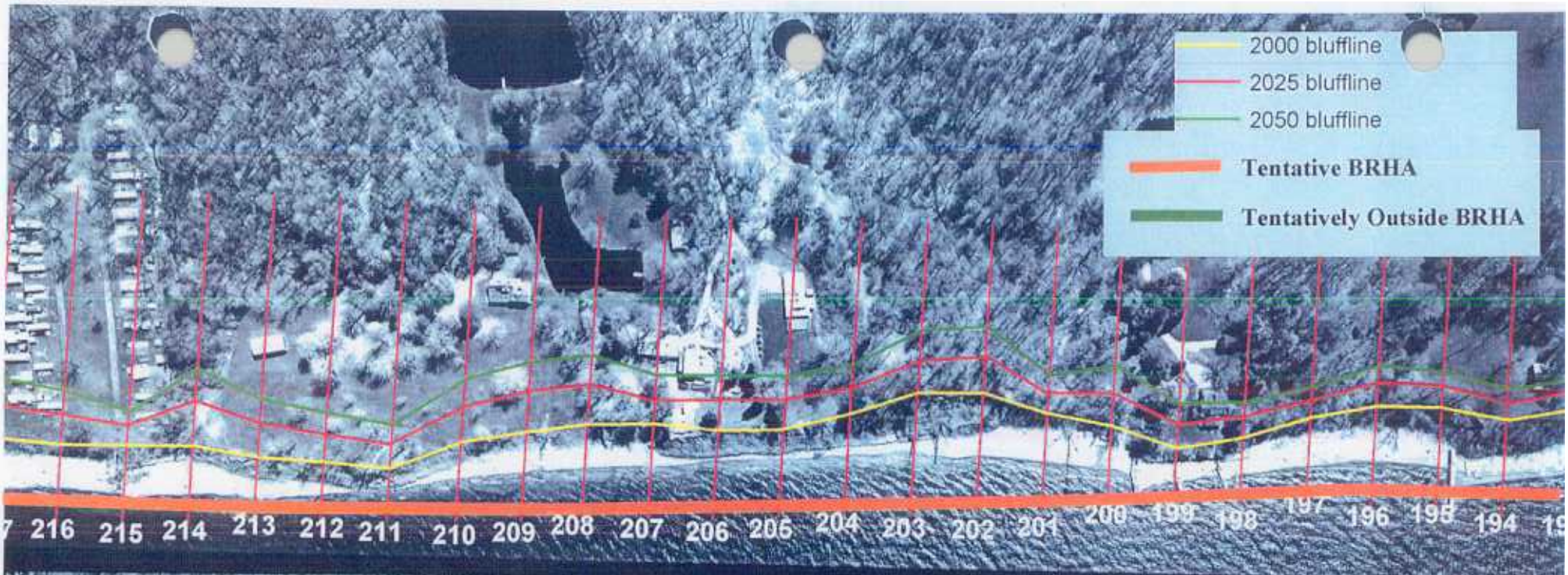
No measurable change in bluff location, but instability and/or signs of bluff recession were observed near transect, therefore this transect is in a Bluff Recession Hazard Area



Transect	175	176	177	178	179	180	181
predicted recession by 2025	42.1	29.0	22.2		33.4	19.0	
predicted recession by 2050	75.5	49.7	36.2		58.5	29.7	
recession rate (ft/yr)	1.3	0.8	0.6	discard	1.0	0.4	discard

Transect	182	183	184	185	186	187	188
predicted recession by 2025			34.6	33.9	28.7	42.2	30.5
predicted recession by 2050			60.8	59.6	49.0	76.0	52.7
recession rate (ft/yr)	discard	discard	1.1	1.0	0.8	1.4	0.9

Transect	189	190	191	192	193	194	195
predicted recession by 2025	33.1	41.3	36.1	32.2	28.0	25.4	31.4
predicted recession by 2050	57.9	74.3	63.9	55.5	47.1	44.3	53.7
recession rate (ft/yr)	1.0	1.3	1.1	0.9	0.8	0.8	0.9



2000 Aerial Photograph



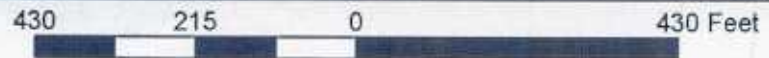
Transect	196	197	198	199	200	201	202
predicted recession by 2025	35.0	27.8	31.6	38.3	51.2	30.6	55.5
predicted recession by 2050	59.5	45.9	54.9	68.2	94.1	55.5	100.9
recession rate (ft/yr)	1.0	0.7	0.9	1.2	1.7	1.0	1.8

Transect	203	204	205	206	207	208	209
predicted recession by 2025	47.7	40.5	43.6	44.2	34.3	60.2	60.7
predicted recession by 2050	95.6	79.2	79.4	81.7	72.7	105.9	106.4
recession rate (ft/yr)	1.9	1.5	1.4	1.5	1.5	1.8	1.8

Transect	210	211	212	213	214	215	216
predicted recession by 2025	54.4	37.8	40.8	48.9	66.5	30.6	44.9
predicted recession by 2050	95.3	67.6	74.2	89.0	115.9	53.7	81.5
recession rate (ft/yr)	1.6	1.2	1.3	1.6	2.0	0.9	1.5



2000 Aerial Photograph



1996 Aerial Photograph

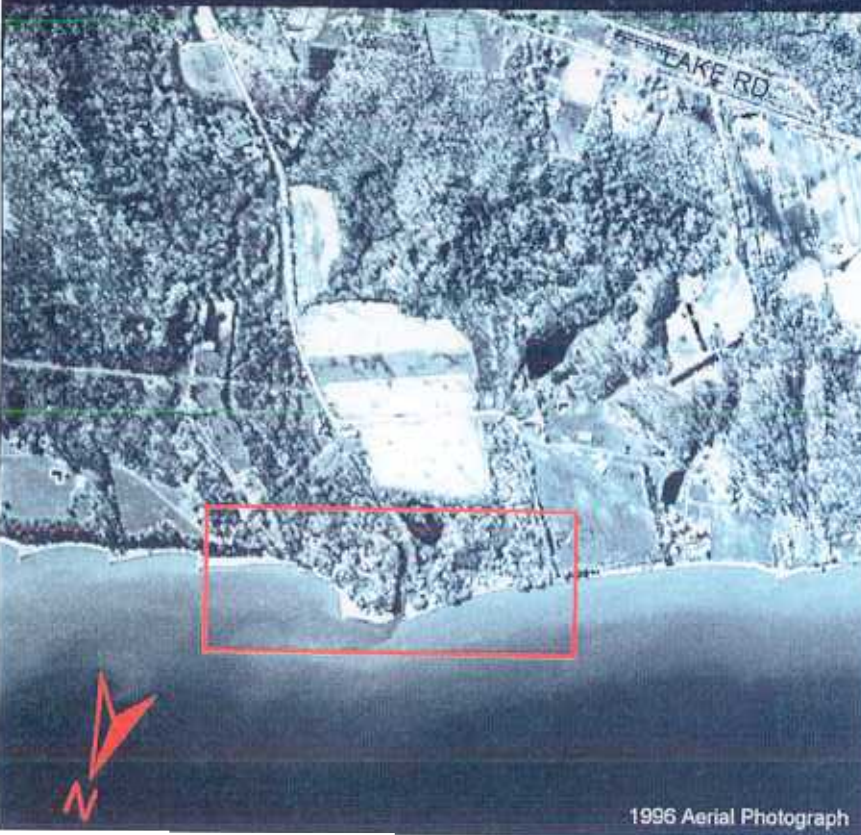
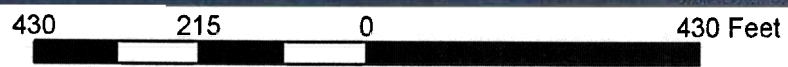
Transect	217	218	219	220	221	222	223
predicted recession by 2025	49.2		76.7	86.3	89.4	85.8	89.7
predicted recession by 2050	90.1		130.4	147.6	154.0	148.4	153.6
recession rate (ft/yr)	1.6	discard	2.1	2.5	2.6	2.5	2.6

Transect	224	225	226	227	228	229	230
predicted recession by 2025	82.4	87.0	85.7	89.7	95.1	91.6	98.9
predicted recession by 2050	144.5	149.1	149.4	155.7	168.6	159.2	171.6
recession rate (ft/yr)	2.5	2.5	2.6	2.6	2.9	2.7	2.9

Transect	231	232	233	234	235
predicted recession by 2025	76.8	79.8	71.9		34.9
predicted recession by 2050	140.6	151.4	127.7		61.5
recession rate (ft/yr)	2.6	2.9	2.2	discard	1.1



2000 Aerial Photograph



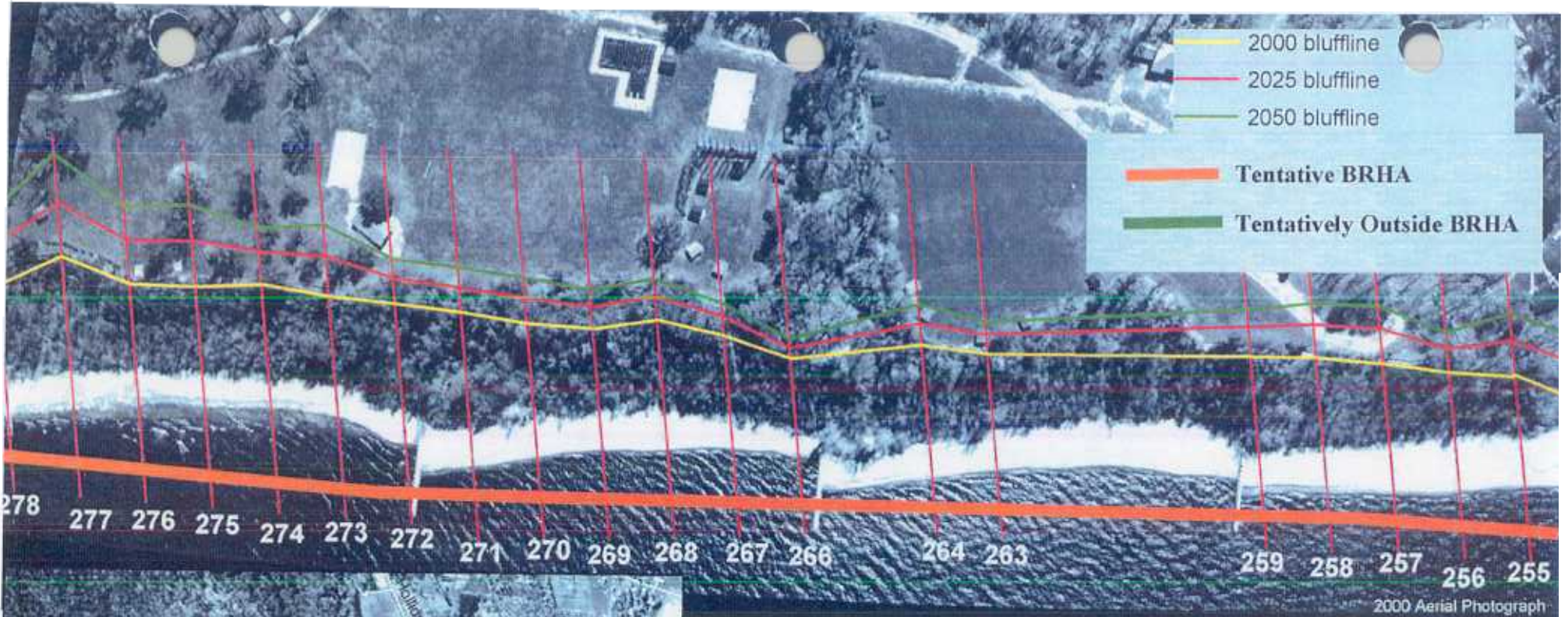
1996 Aerial Photograph

Transect	236	237	238	239	240	241	242
predicted recession by 2025							
predicted recession by 2050							
recession rate (ft/yr)	discard	discard	discard	discard	discard	discard	discard

Transect	243	244	245	246	247	248	249
predicted recession by 2025			0.0	0.0	0.0	0.0	
predicted recession by 2050			0.0	0.0	0.0	0.0	
recession rate (ft/yr)	discard	discard	0.0	0.0	0.0	0.0	discard

Transect	250	251	252	253	254	255
predicted recession by 2025		37.9	43.7	47.0		52.6
predicted recession by 2050		67.6	79.1	85.7		96.8
recession rate (ft/yr)	discard	1.2	1.4	1.5	discard	1.8

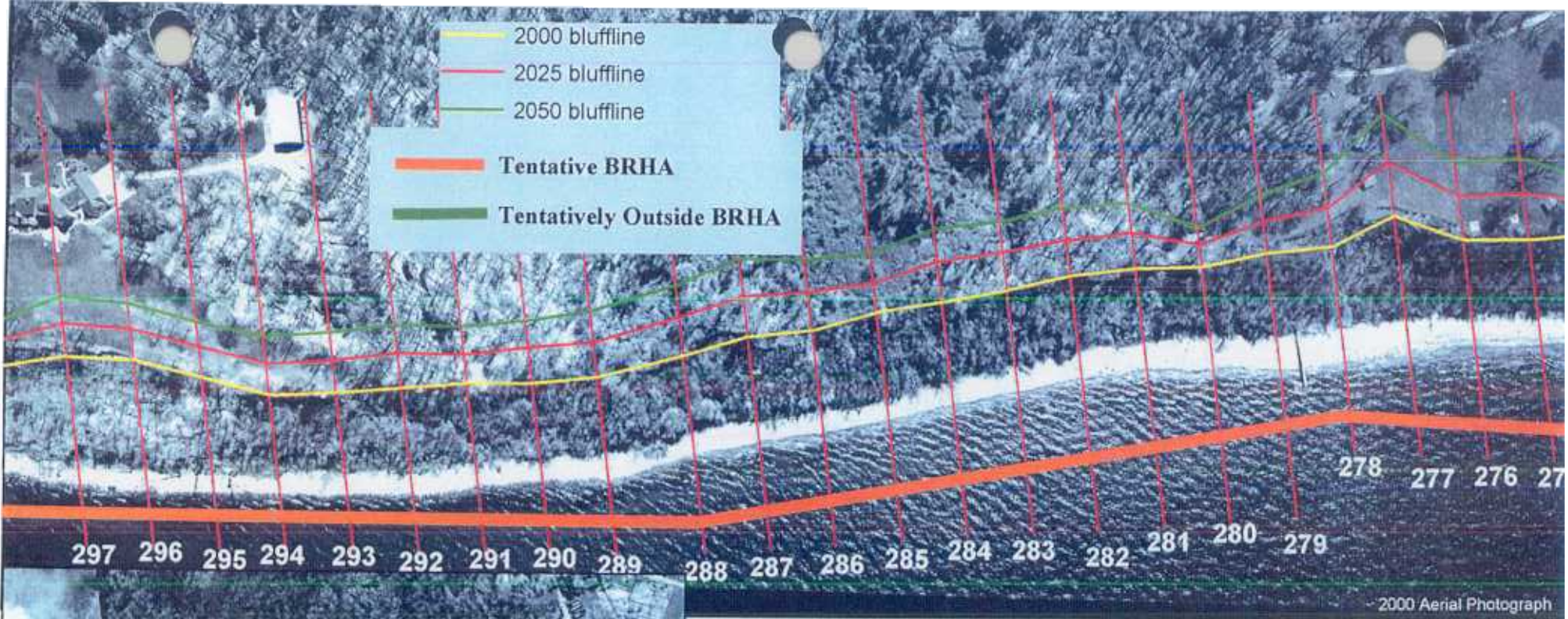
No measurable change in bluff location, but instability and/or signs of bluff recession were observed near transect, therefore this transect is in a Bluff Recession Hazard Area



Transect	266	267	268	259	260	261	262
predicted recession by 2025	35.2	42.5	40.2	42.4			
predicted recession by 2050	62.2	76.6	72.0	70.4			
recession rate (ft/yr)	1.1	1.4	1.3	1.1	discard	discard	discard

Transect	263	264	265	266	267	268	269
predicted recession by 2025	27.9	33.5		15.9	29.2	36.2	32.5
predicted recession by 2050	47.5	58.7		23.5	50.1	64.1	56.6
recession rate (ft/yr)	0.8	1.0	discard	0.3	0.8	1.1	1.0

Transect	270	271	272	273	274	275	276
predicted recession by 2025	38.5	37.6	37.7	61.3	49.8	69.9	65.7
predicted recession by 2050	68.6	66.9	67.1	108.1	85.9	122.2	117.1
recession rate (ft/yr)	1.2	1.2	1.2	1.9	1.4	2.1	2.1



- 2000 bluffline
- 2025 bluffline
- 2050 bluffline
- Tentative BRHA
- Tentatively Outside BRHA

297 296 295 294 293 292 291 290 289 288 287 286 285 284 283 282 281 280 279

278 277 276 275

~ 2000 Aerial Photograph



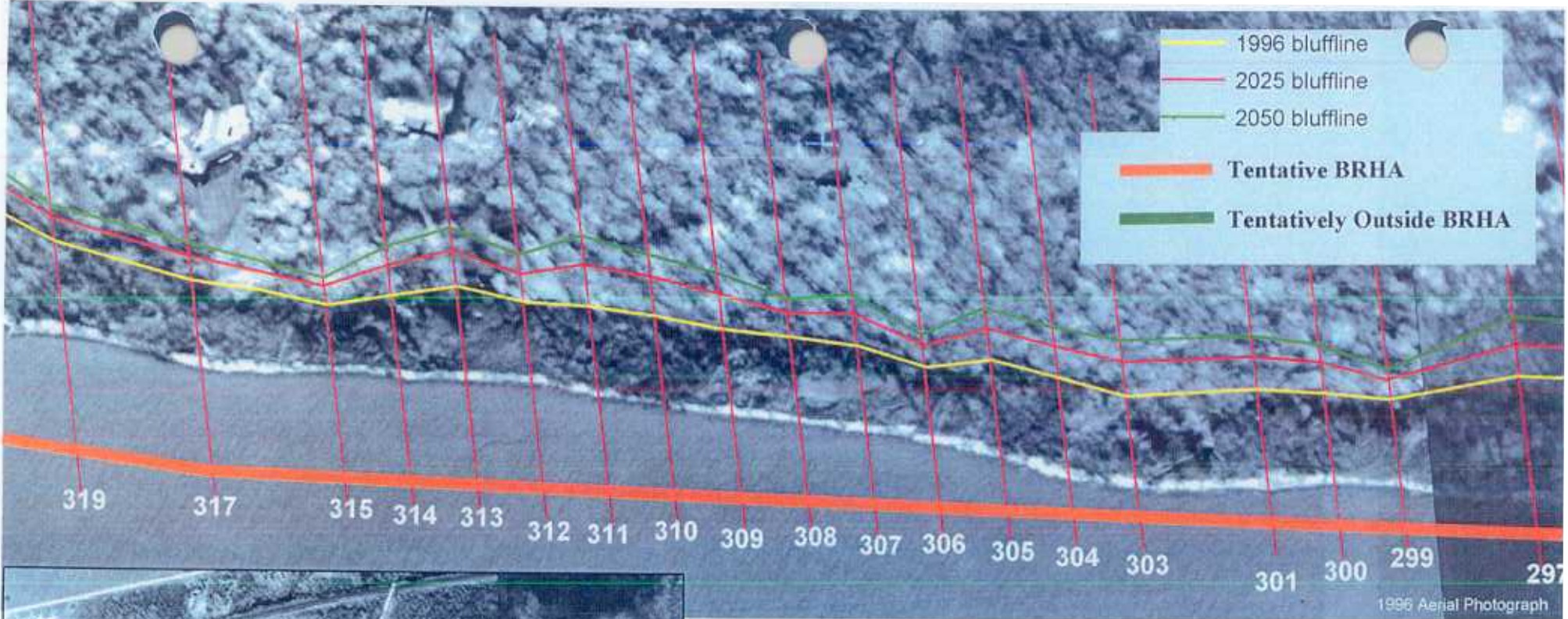
Transect	277	278	279	280	281	282	283
predicted recession by 2025	82.0	63.5	49.2	53.9	53.4	54.8	59.2
predicted recession by 2050	155.8	114.3	89.5	94.8	98.7	103.0	104.5
recession rate (ft/yr)	3.0	2.0	1.6	1.6	1.8	1.9	1.8

Transect	284	285	286	287	288	289	290
predicted recession by 2025	61.3	43.0	57.0	60.2	59.0	53.8	53.2
predicted recession by 2050	111.5	88.9	106.1	118.1	106.1	101.7	94.7
recession rate (ft/yr)	2.0	1.8	2.0	2.3	1.9	1.9	1.7

Transect	291	292	293	294	295	296	297
predicted recession by 2025	45.4	52.4	50.5	47.8	47.4	48.1	50.3
predicted recession by 2050	87.0	96.5	92.0	87.3	86.5	88.0	92.3
recession rate (ft/yr)	1.7	1.8	1.7	1.6	1.6	1.6	1.7



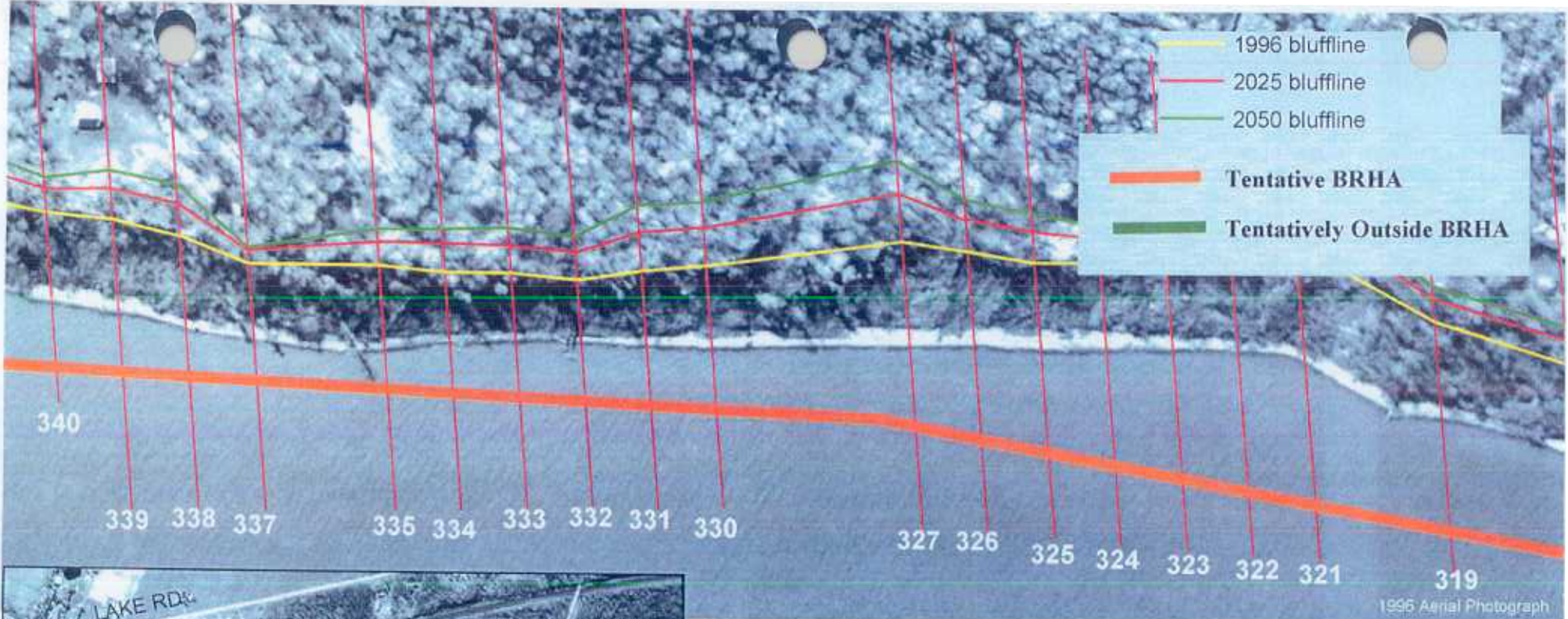
1996 Aerial Photograph



Transect	298	299	300	301	302	303	304
predicted recession by 2025		31.2	47.4	50.6		51.7	48.0
predicted recession by 2050		46.1	76.3	82.2		84.3	77.4
recession rate (ft/yr)	discard	0.6	1.2	1.3	discard	1.3	1.2

Transect	305	306	307	308	309	310	311
predicted recession by 2025	49.1	32.6	48.1	37.7	52.4	56.5	64.2
predicted recession by 2050	79.4	48.7	77.5	58.1	85.6	93.2	107.5
recession rate (ft/yr)	1.2	0.6	1.2	0.8	1.3	1.5	1.7

Transect	312	313	314	315	316	317	318
predicted recession by 2025	45.4	54.9	45.9	28.4		38.5	
predicted recession by 2050	72.5	90.2	73.4	40.9		59.7	
recession rate (ft/yr)	1.1	1.4	1.1	0.5	discard	0.8	discard



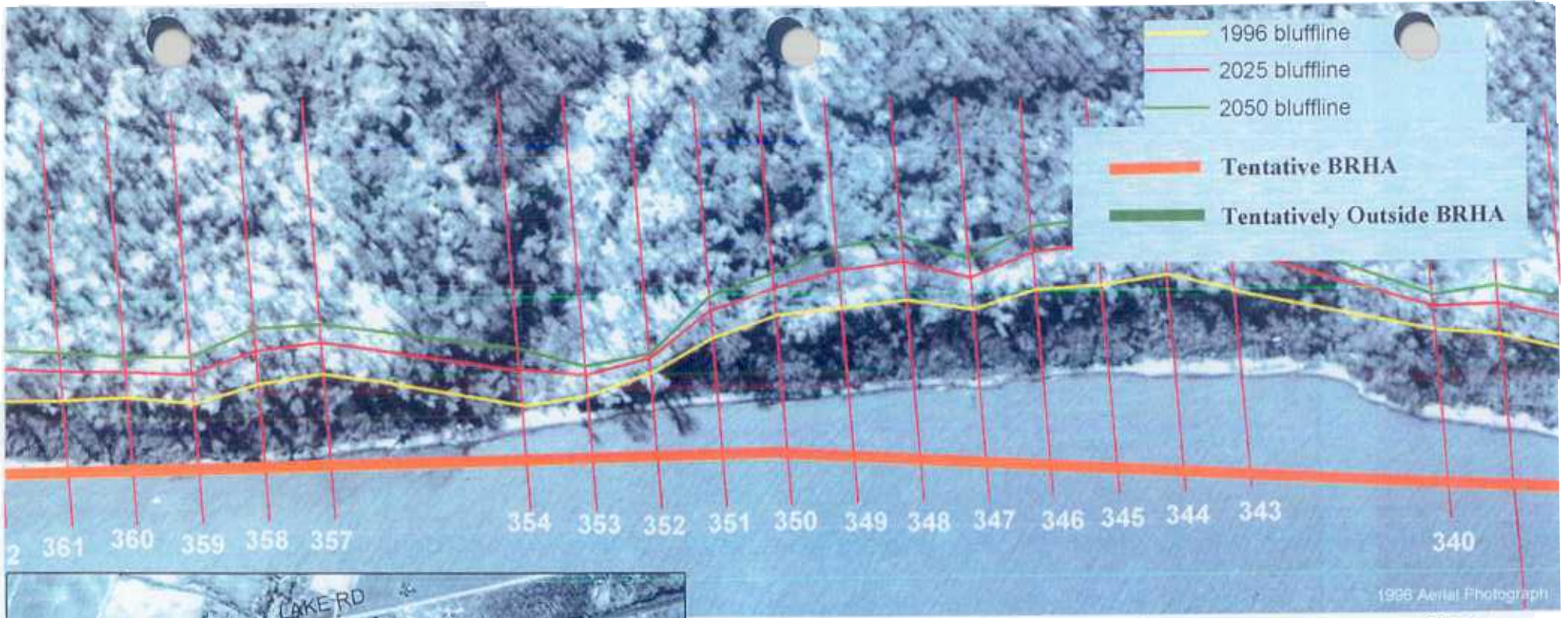
- 1996 bluffline
- 2025 bluffline
- 2050 bluffline
- Tentative BRHA
- Tentatively Outside BRHA



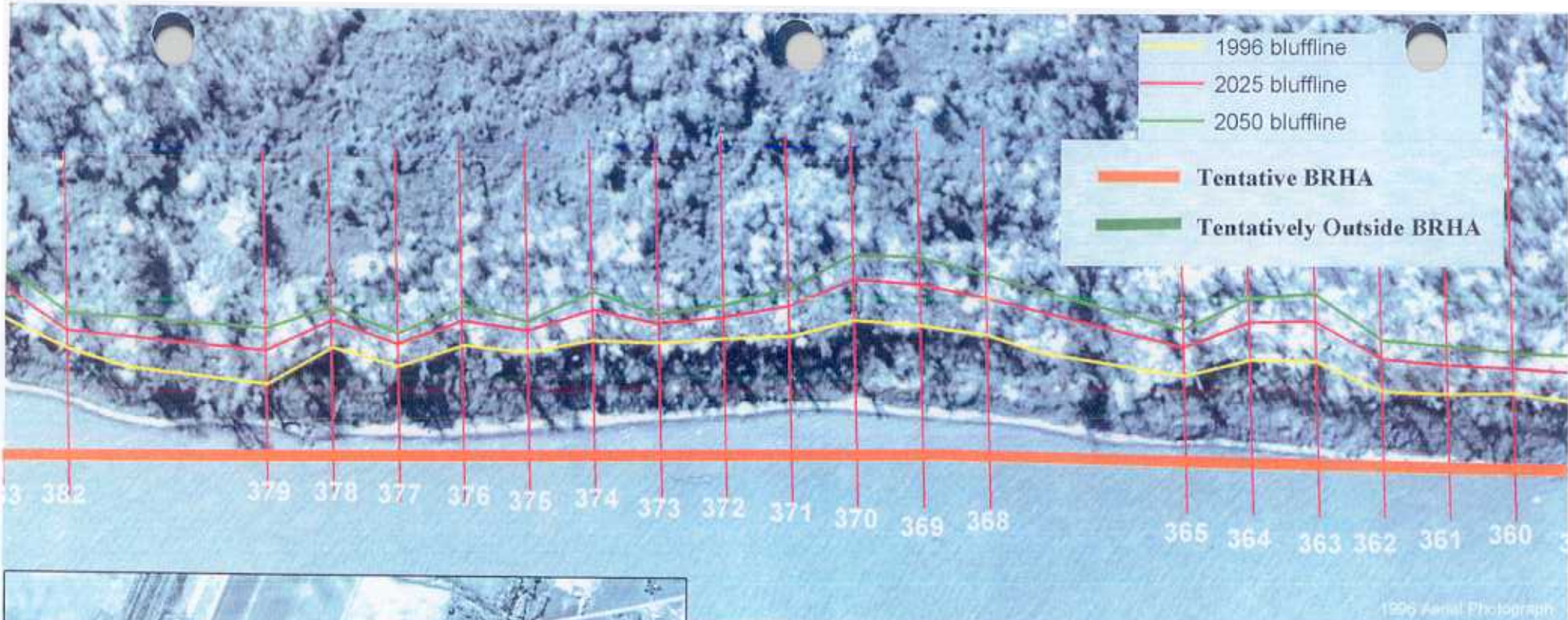
Transect	319	320	321	322	323	324	326
predicted recession by 2025	35.2		54.6	29.0	48.7	36.5	47.4
predicted recession by 2050	53.6		89.6	41.9	78.7	55.9	76.2
recession rate (ft/yr)	0.7	discard	1.4	0.5	1.2	0.8	1.2

Transect	326	327	328	329	330	331	332
predicted recession by 2025	49.4	73.3			59.8	60.0	41.8
predicted recession by 2050	80.0	124.4			99.3	99.7	65.9
recession rate (ft/yr)	1.2	2.0	discard	discard	1.6	1.6	1.0

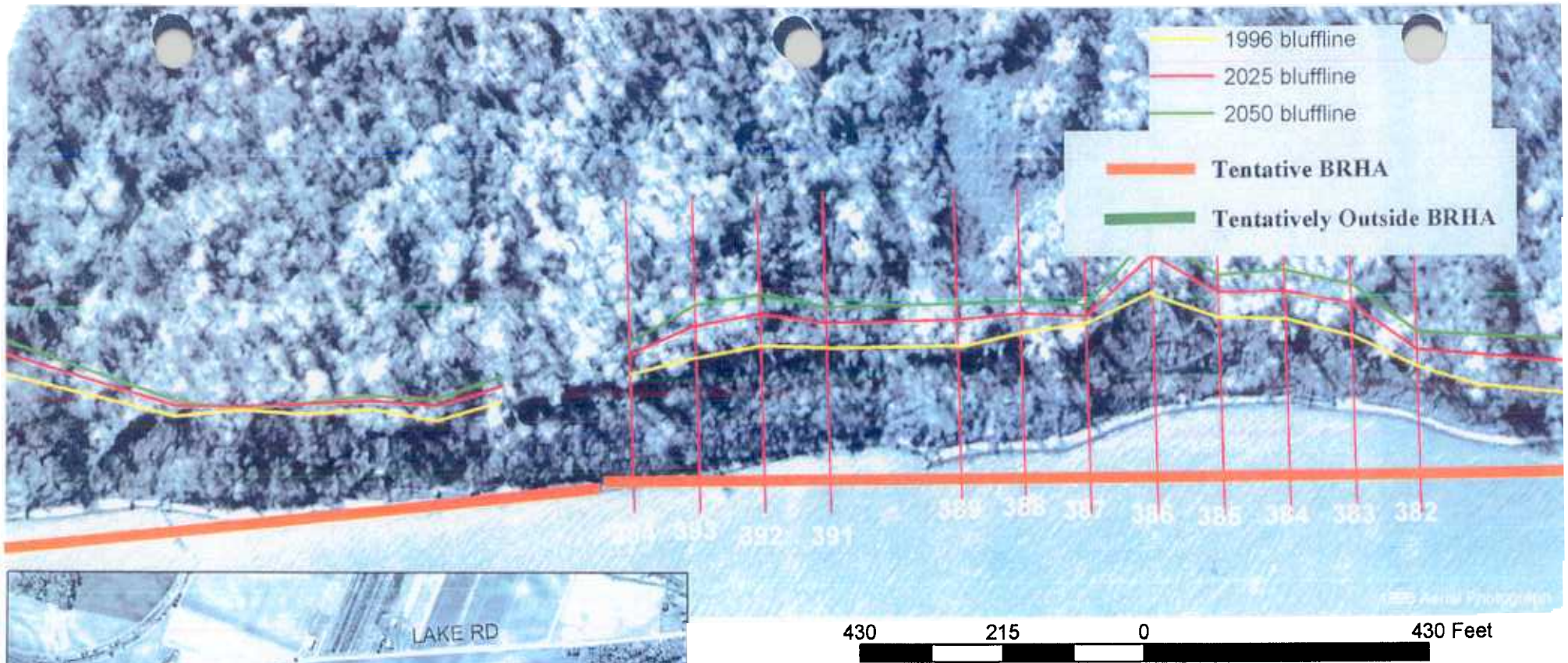
Transect	333	334	336	336	337	338	339
predicted recession by 2025	42.5	41.0	35.7		19.5	48.5	45.5
predicted recession by 2050	67.2	64.3	54.5		24.2	78.3	72.7
recession rate (ft/yr)	1.0	0.9	0.8	discard	0.2	1.2	1.1



Transect	340	341	342	343	344	345	346
predicted recession by 2025	35.8			60.4	60.4	61.8	58.1
predicted recession by 2050	54.7			100.4	100.4	103.0	96.2
recession rate (ft/yr)	0.8	discard	discard	1.6	1.6	1.7	1.5
Transect	347	348	349	350	351	352	353
predicted recession by 2025	47.7	57.6	55.8	40.2	40.8	22.6	31.4
predicted recession by 2050	76.8	95.2	91.9	62.9	64.0	30.1	46.4
recession rate (ft/yr)	1.2	1.5	1.4	0.9	0.9	0.3	0.6
Transect	354	355	356	357	358	359	360
predicted recession by 2025	53.6			48.0	52.0	44.0	39.5
predicted recession by 2050	87.8			77.4	84.8	69.9	61.6
recession rate (ft/yr)	1.4	discard	discard	1.2	1.3	1.0	0.9



Transect	361	362	363	364	365	366	367
predicted recession by 2025	46.2	48.3	61.2	56.4	43.6		
predicted recession by 2050	74.0	77.9	101.9	92.9	69.1		
recession rate (ft/yr)	1.1	1.2	1.6	1.5	1.0	discard	discard
Transect	368	369	370	371	372	373	374
predicted recession by 2025	55.3	61.0	60.3	44.1	33.4	30.1	44.3
predicted recession by 2050	90.9	101.6	100.2	70.1	50.2	44.0	70.5
recession rate (ft/yr)	1.4	1.6	1.6	1.0	0.7	0.6	1.0
Transect	375	376	377	378	379	380	381
predicted recession by 2025	31.7	37.6	33.0	39.7	51.9		
predicted recession by 2050	47.0	57.9	49.5	61.9	84.7		
recession rate (ft/yr)	0.6	0.8	0.7	0.9	1.3	discard	discard



Transect	382	383	384	385	386	387	388
predicted recession by 2025	24.3	47.3	40.7	36.3	54.7	31.9	36.8
predicted recession by 2050	33.3	76.0	63.8	55.6	89.9	47.4	56.4
recession rate (ft/yr)	0.4	1.2	0.9	0.8	1.4	0.6	0.8

Transect	389	390	391	392	393	394
predicted recession by 2025	41.9		39.9	47.5	49.5	31.4
predicted recession by 2050	66.0		62.2	76.4	80.2	46.5
recession rate (ft/yr)	1.0	discard	0.9	1.2	1.2	0.6