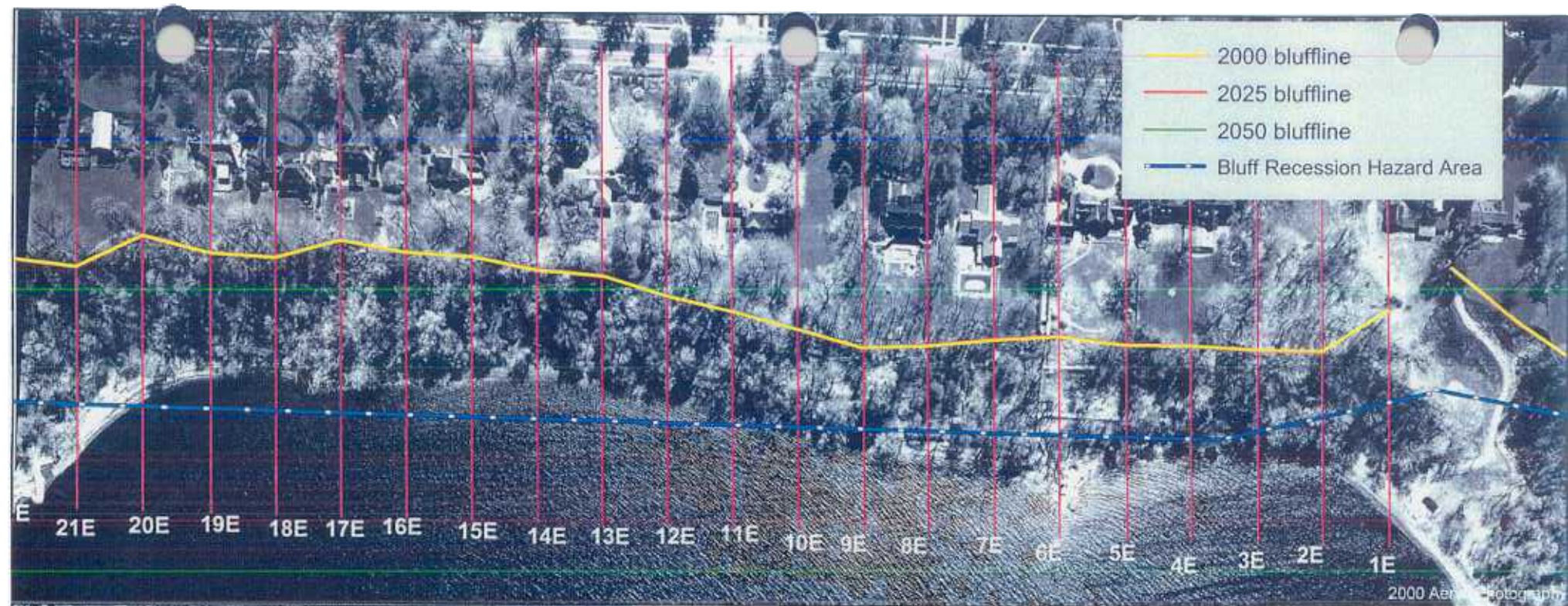


City of Erie, PA

Bluff Recession Hazard Area Maps

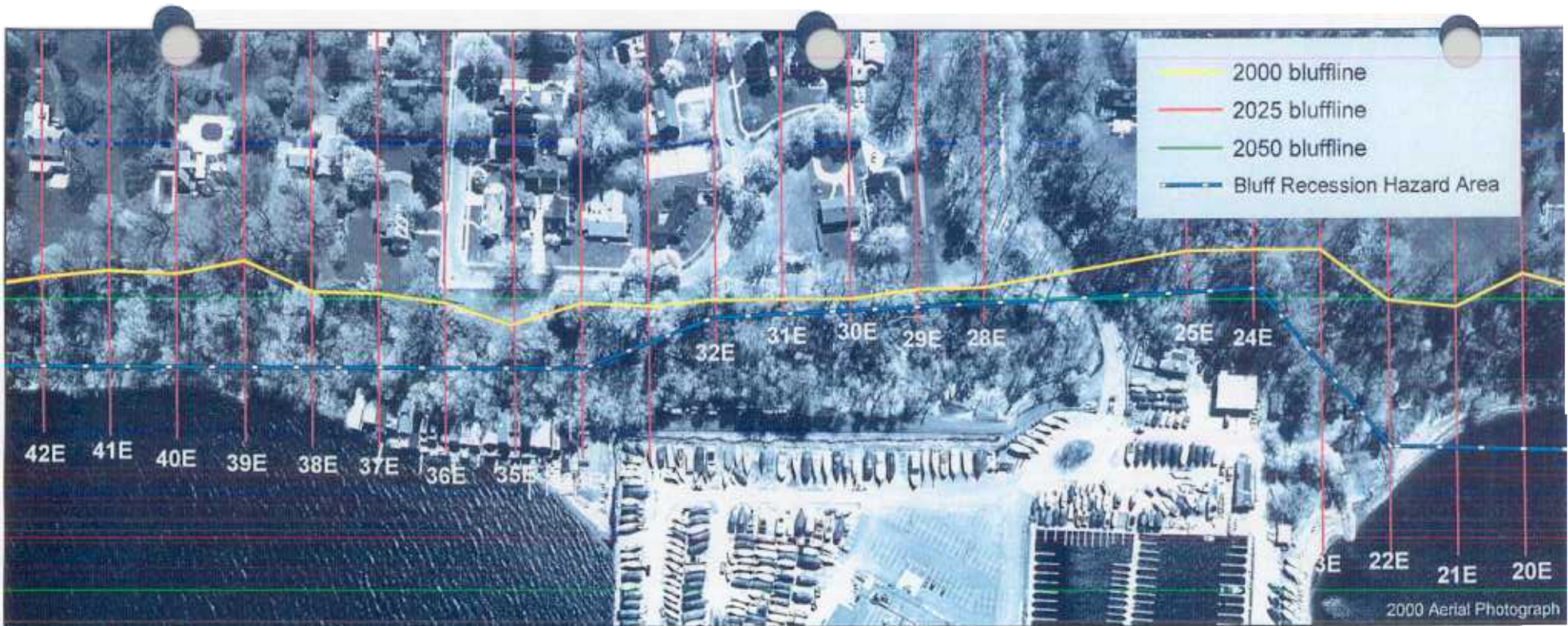


Transect	1	2	3	4	5	6	7
predicted recession by 2025	0.0	0.0	0.0	0.0	0.0	0.0	0.0
predicted recession by 2050	0.0	0.0	0.0	0.0	0.0	0.0	0.0
recession rate (ft/yr)	0.0	0.0	0.0	0.0	0.0	0.0	0.0

Transect	8	9	10	11	12	13	14
predicted recession by 2025	0.0	0.0	0.0	0.0	0.0	0.0	0.0
predicted recession by 2050	0.0	0.0	0.0	0.0	0.0	0.0	0.0
recession rate (ft/yr)	0.0	0.0	0.0	0.0	0.0	0.0	0.0

Transect	15	16	17	18	19	20	21
predicted recession by 2025	0.0	0.0	0.0	0.0	0.0	0.0	0.0
predicted recession by 2050	0.0	0.0	0.0	0.0	0.0	0.0	0.0
recession rate (ft/yr)	0.0	0.0	0.0	0.0	0.0	0.0	0.0

No measurable change in bluff location, but instability and/or signs of bluff recession were observed near transect, therefore this transect is in a Bluff Recession Hazard Area

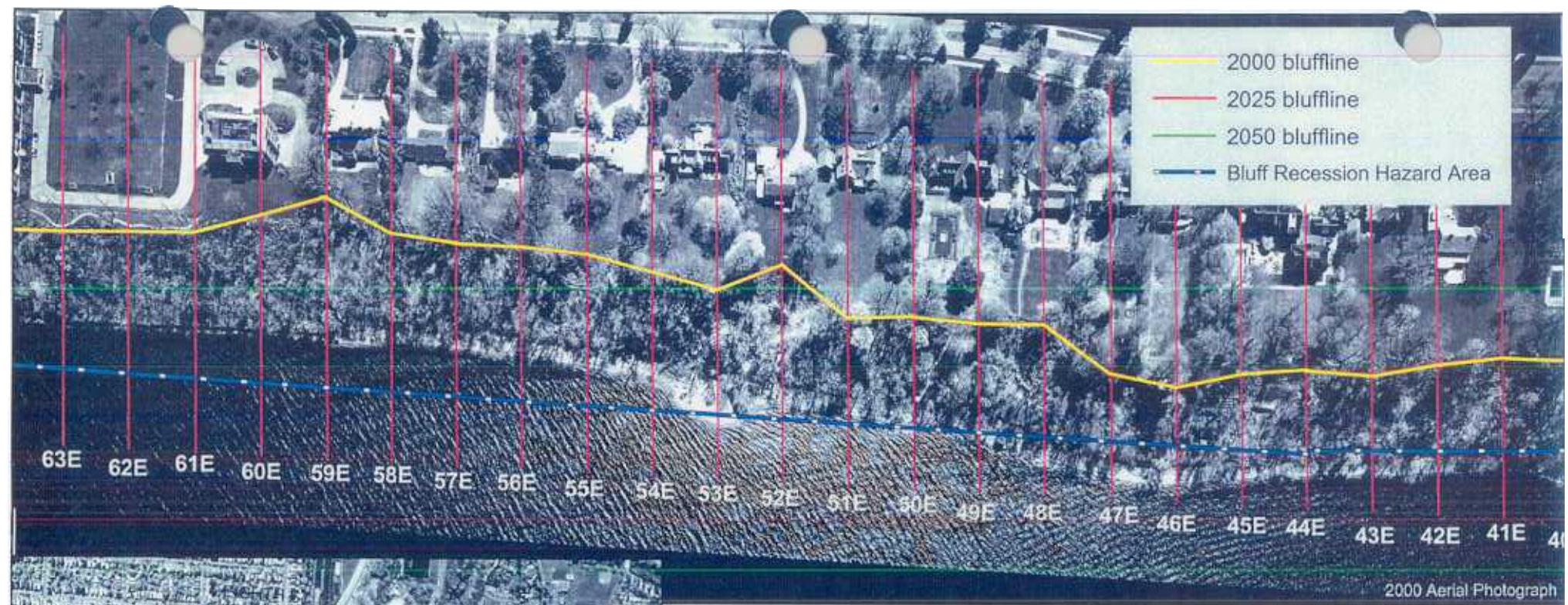


Transect	22	23	24	25	26	27	28
predicted recession by 2025	0.0	0.0	0.0	0.0			0.0
predicted recession by 2050	0.0	0.0	0.0	0.0			0.0
recession rate (ft/yr)	0.0	0.0	0.0	0.0	discard	discard	0.0

Transect	29	30	31	32	33	34	35
predicted recession by 2025	0.0	0.0	0.0	0.0	0.0	0.0	0.0
predicted recession by 2050	0.0	0.0	0.0	0.0	0.0	0.0	0.0
recession rate (ft/yr)	0.0	0.0	0.0	0.0	0.0	0.0	0.0

Transect	36	37	38	39	40	41	42
predicted recession by 2025	0.0	0.0	0.0	0.0	0.0	0.0	0.0
predicted recession by 2050	0.0	0.0	0.0	0.0	0.0	0.0	0.0
recession rate (ft/yr)	0.0	0.0	0.0	0.0	0.0	0.0	0.0

Yellow No measurable change in bluff location, but instability and/or signs of bluff recession were observed near transect, therefore this transect is in a Bluff Recession Hazard Area

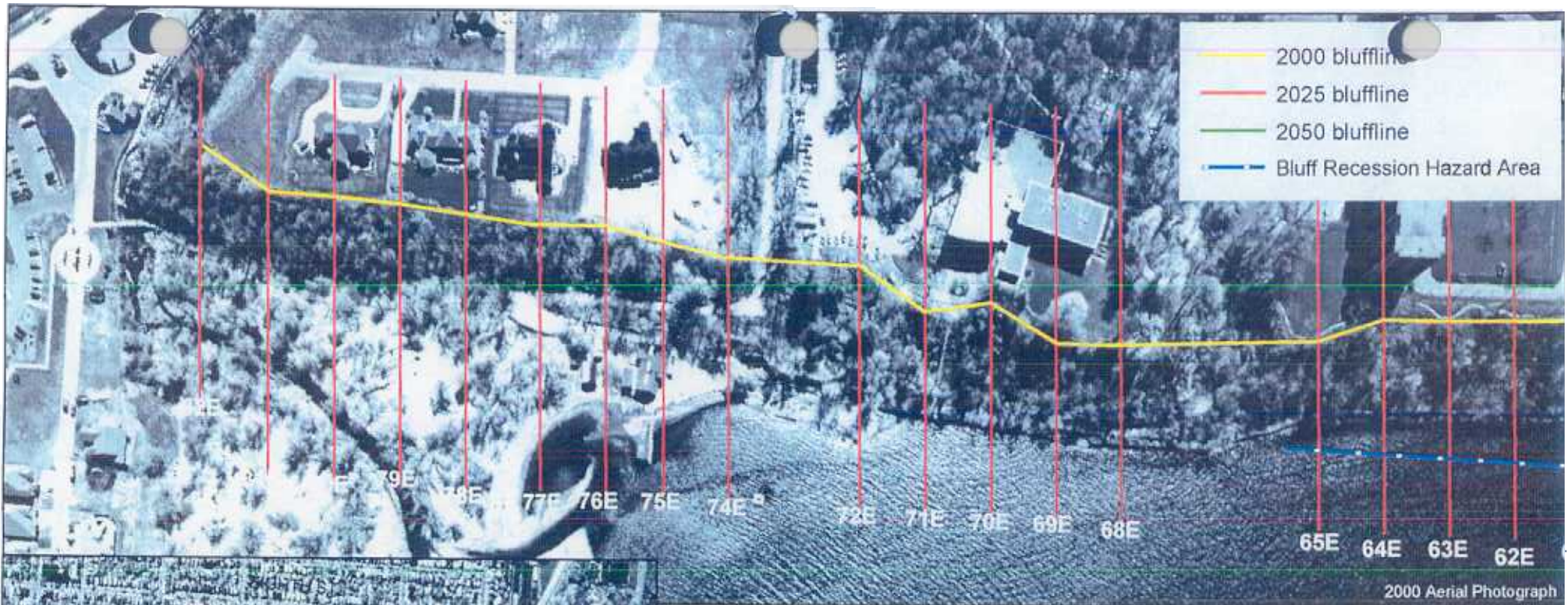


Transect	42	43	44	45	46	47	48
predicted recession by 2025	0.0	0.0	0.0	0.0	0.0	0.0	0.0
predicted recession by 2050	0.0	0.0	0.0	0.0	0.0	0.0	0.0
recession rate (ft/yr)	0.0	0.0	0.0	0.0	0.0	0.0	0.0

Transect	49	50	51	52	53	54	55
predicted recession by 2025	0.0	0.0	0.0	0.0	0.0	0.0	0.0
predicted recession by 2050	0.0	0.0	0.0	0.0	0.0	0.0	0.0
recession rate (ft/yr)	0.0	0.0	0.0	0.0	0.0	0.0	0.0

Transect	56	57	58	59	60	61	62
predicted recession by 2025	0.0	0.0	0.0	0.0	0.0	0.0	0.0
predicted recession by 2050	0.0	0.0	0.0	0.0	0.0	0.0	0.0
recession rate (ft/yr)	0.0	0.0	0.0	0.0	0.0	0.0	0.0

No measurable change in bluff location, but instability and/or signs of bluff recession were observed near transect, therefore this transect is in a Bluff Recession Hazard Area



- 2000 bluffline
- 2025 bluffline
- 2050 bluffline
- - - Bluff Recession Hazard Area

2000 Aerial Photograph



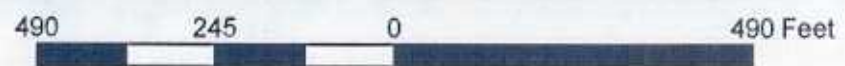
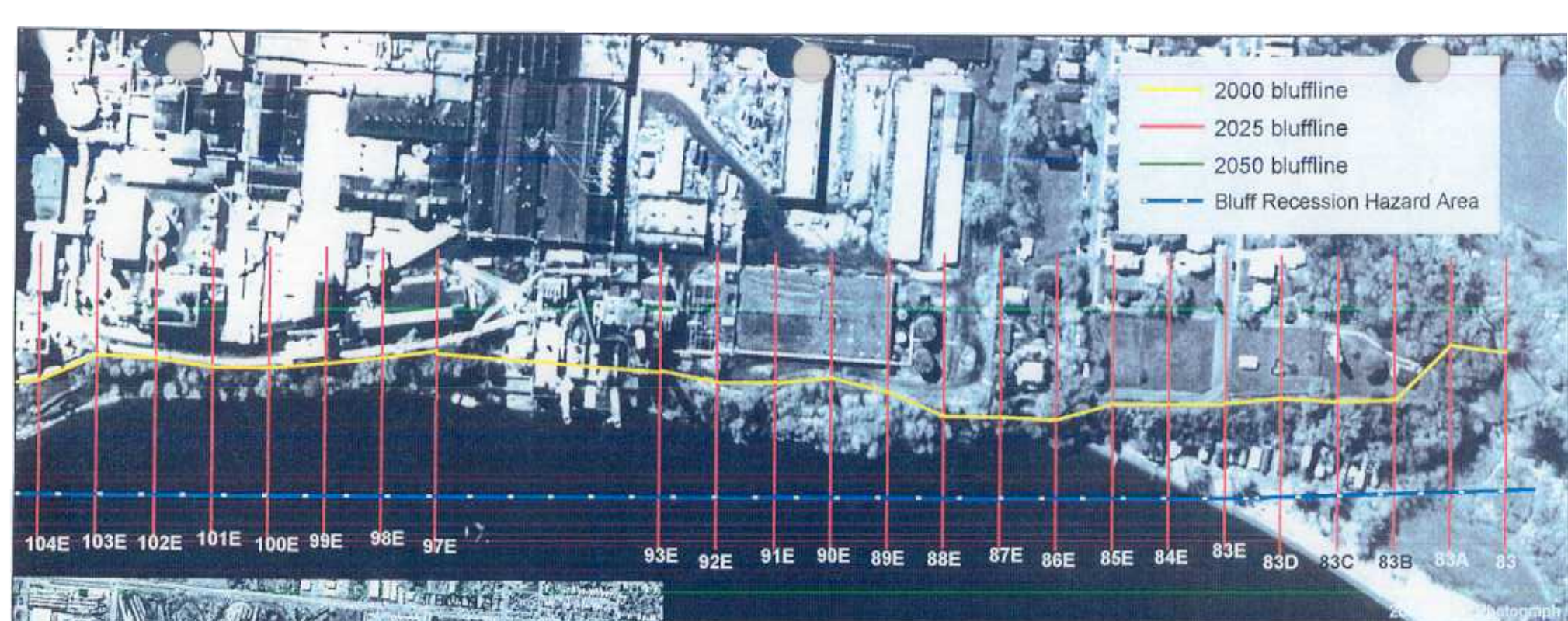
1996 Aerial Photograph

Transect	63	64	65	66	67	68	69
predicted recession by 2025	0.0	0.0	0.0			0.0	0.0
predicted recession by 2050	0.0	0.0	0.0			0.0	0.0
recession rate (ft/yr)	0.0	0.0	0.0	discard	discard	0.0	0.0

Transect	70	71	72	73	74	75	76
predicted recession by 2025	0.0	0.0	0.0		0.0	0.0	0.0
predicted recession by 2050	0.0	0.0	0.0		0.0	0.0	0.0
recession rate (ft/yr)	0.0	0.0	0.0	discard	0.0	0.0	0.0

Transect	77	78	79	80	81	82
predicted recession by 2025	0.0	0.0	0.0	0.0	0.0	0.0
predicted recession by 2050	0.0	0.0	0.0	0.0	0.0	0.0
recession rate (ft/yr)	0.0	0.0	0.0	0.0	0.0	0.0

No measurable change in bluff location, but instability and/or signs of bluff recession were observed near transect, therefore this transect is in a Bluff Recession Hazard Area



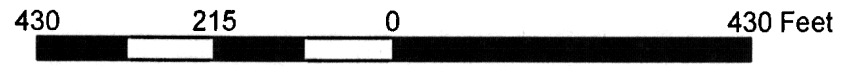
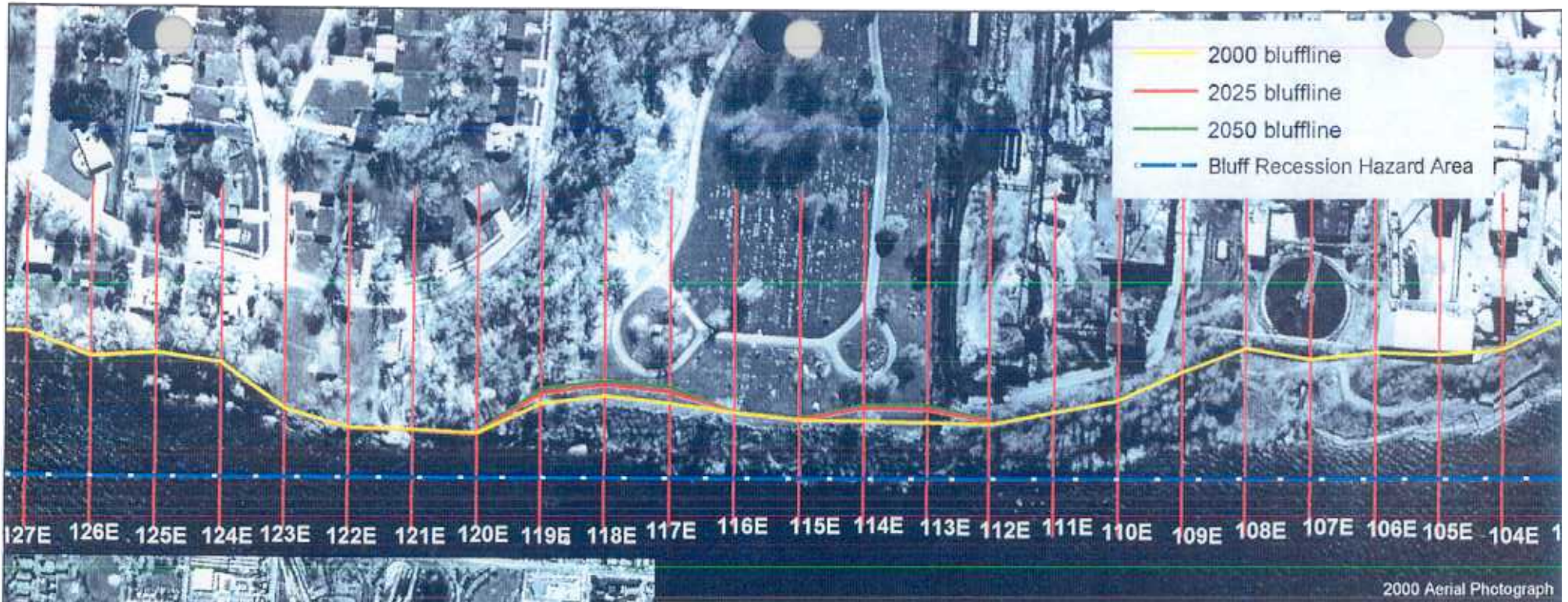
Transect	83	83A	83B	83C	83D	83E	84
predicted recession by 2025	0.0	0.0	0.0	0.0	0.0	0.0	0.0
predicted recession by 2050	0.0	0.0	0.0	0.0	0.0	0.0	0.0
recession rate (ft/yr)	0.0	0.0	0.0	0.0	0.0	0.0	0.0

Transect	85	86	87	88	89	90	91
predicted recession by 2025	0.0	0.0	0.0	0.0	0.0	0.0	0.0
predicted recession by 2050	0.0	0.0	0.0	0.0	0.0	0.0	0.0
recession rate (ft/yr)	0.0	0.0	0.0	0.0	0.0	0.0	0.0

Transect	92	93	94	95	96	97	98
predicted recession by 2025	0.0	0.0				0.0	0.0
predicted recession by 2050	0.0	0.0				0.0	0.0
recession rate (ft/yr)	0.0	0.0	discard	discard	discard	0.0	0.0

Transect	99	100	101	102	103	104
predicted recession by 2025	0.0	0.0	0.0	0.0	0.0	0.0
predicted recession by 2050	0.0	0.0	0.0	0.0	0.0	0.0
recession rate (ft/yr)	0.0	0.0	0.0	0.0	0.0	0.0

Yellow No measurable change in bluff location, but instability and/or signs of bluff recession were observed near transect, therefore this transect is in a Bluff Recession Hazard Area



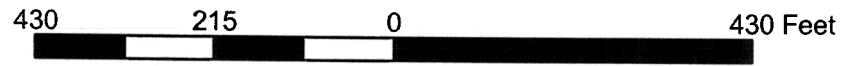
Transect	105	106	107	108	109	110	111
predicted recession by 2025	0.0	0.0	0.0	0.0	0.0	0.0	0.0
predicted recession by 2050	0.0	0.0	0.0	0.0	0.0	0.0	0.0
recession rate (ft/yr)	0.0	0.0	0.0	0.0	0.0	0.0	0.0

Transect	112	113	114	115	116	117	118
predicted recession by 2025	0.0	19.5	18.1	0.0	0.0	17.8	17.0
predicted recession by 2050	0.0	28.1	25.1	0.0	0.0	24.6	23.0
recession rate (ft/yr)	0.0	0.3	0.3	0.0	0.0	0.3	0.2

Transect	119	120	121	122	123	124	125
predicted recession by 2025	16.8	0.0	0.0	0.0	0.0	0.0	0.0
predicted recession by 2050	22.5	0.0	0.0	0.0	0.0	0.0	0.0
recession rate (ft/yr)	0.2	0.0	0.0	0.0	0.0	0.0	0.0

Transect	119	120	121	122	123	124	125
predicted recession by 2025	16.8	0.0	0.0	0.0	0.0	0.0	0.0
predicted recession by 2050	22.5	0.0	0.0	0.0	0.0	0.0	0.0
recession rate (ft/yr)	0.2	0.0	0.0	0.0	0.0	0.0	0.0

No measurable change in bluff location, but instability and/or signs of bluff recession were observed near transect, therefore this transect is in a Bluff Recession Hazard Area



Transect	126	127	128	129	130	131	132
predicted recession by 2025	0.0	0.0	0.0	0.0		0.0	0.0
predicted recession by 2050	0.0	0.0	0.0	0.0		0.0	0.0
recession rate (ft/yr)	0.0	0.0	0.0	0.0	discard	0.0	0.0

Transect	133	134	135	136	137	138	139
predicted recession by 2025	0.0	0.0	0.0		0.0	0.0	0.0
predicted recession by 2050	0.0	0.0	0.0		0.0	0.0	0.0
recession rate (ft/yr)	0.0	0.0	0.0	discard	0.0	0.0	0.0

Transect	140	141	142	143	144	145	146
predicted recession by 2025	0.0	0.0	0.0	0.0	0.0	0.0	0.0
predicted recession by 2050	0.0	0.0	0.0	0.0	0.0	0.0	0.0
recession rate (ft/yr)	0.0	0.0	0.0	0.0	0.0	0.0	0.0

No measurable change in bluff location, but instability and/or signs of bluff recession were observed near transect, therefore this transect is in a Bluff Recession Hazard Area