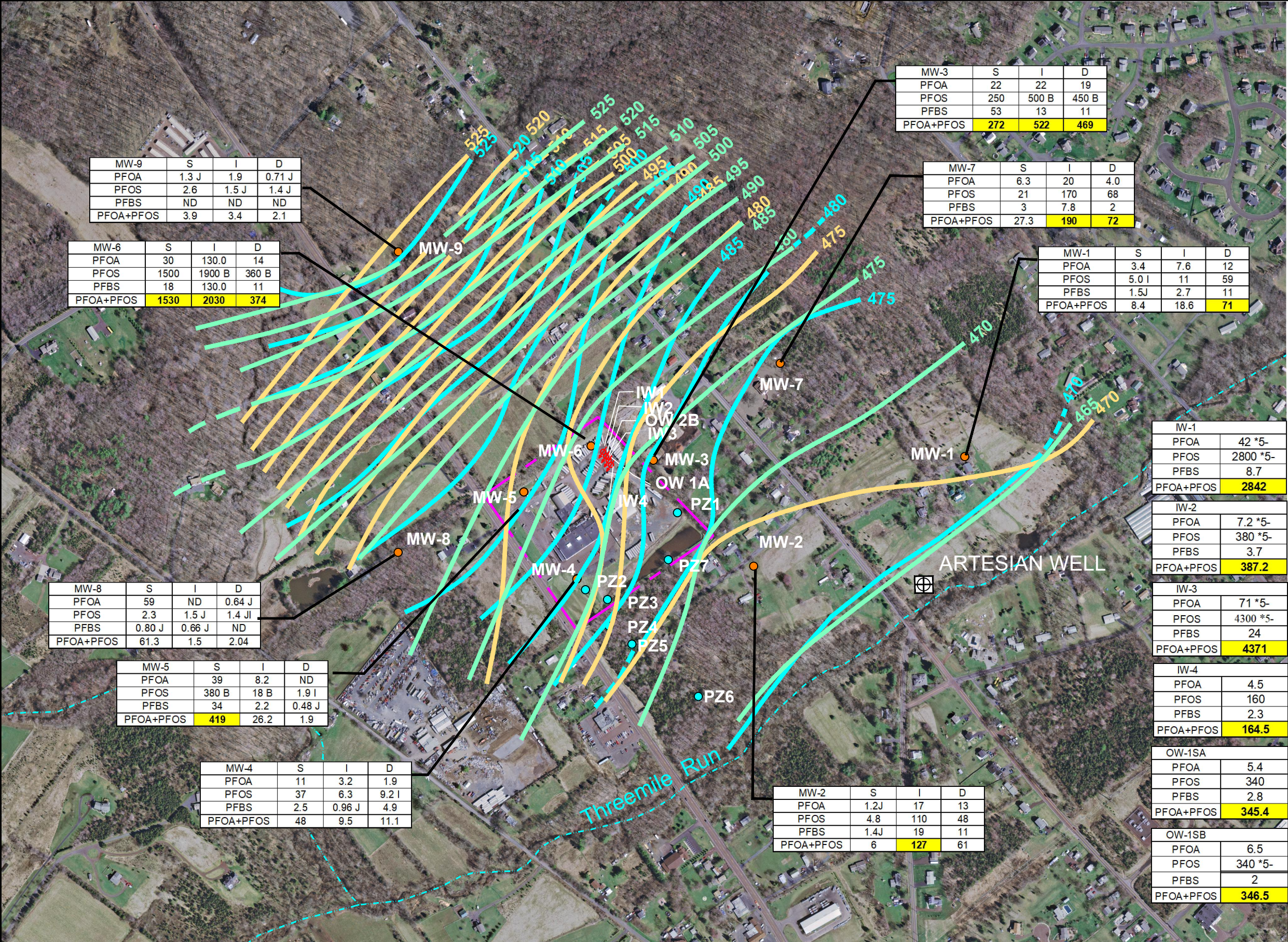


P:\PADEP GTAC 4\CAD-GIS\Ridge Run\DWG\April 2021\103S5436015-2070_APRIL-COMBINED 2021.dwg



MW-9	S	I	D
PFOA	1.3 J	1.9	0.71 J
PFOS	2.6	1.5 J	1.4 J
PFBS	ND	ND	ND
PFOA+PFOS	3.9	3.4	2.1

MW-6	S	I	D
PFOA	30	130.0	14
PFOS	1500	1900 B	360 B
PFBS	18	130.0	11
PFOA+PFOS	1530	2030	374

MW-3	S	I	D
PFOA	22	22	19
PFOS	250	500 B	450 B
PFBS	53	13	11
PFOA+PFOS	272	522	469

MW-7	S	I	D
PFOA	6.3	20	4.0
PFOS	21	170	68
PFBS	3	7.8	2
PFOA+PFOS	27.3	190	72

MW-1	S	I	D
PFOA	3.4	7.6	12
PFOS	5.0 I	11	59
PFBS	1.5 J	2.7	11
PFOA+PFOS	8.4	18.6	71

MW-8	S	I	D
PFOA	59	ND	0.64 J
PFOS	2.3	1.5 J	1.4 JI
PFBS	0.80 J	0.66 J	ND
PFOA+PFOS	61.3	1.5	2.04

MW-5	S	I	D
PFOA	39	8.2	ND
PFOS	380 B	18 B	1.9 I
PFBS	34	2.2	0.48 J
PFOA+PFOS	419	26.2	1.9

MW-4	S	I	D
PFOA	11	3.2	1.9
PFOS	37	6.3	9.2 I
PFBS	2.5	0.96 J	4.9
PFOA+PFOS	48	9.5	11.1

MW-2	S	I	D
PFOA	1.2 J	17	13
PFOS	4.8	110	48
PFBS	1.4 J	19	11
PFOA+PFOS	6	127	61

W-1	S	I	D
PFOA	42 *5-		
PFOS	2800 *5-		
PFBS	8.7		
PFOA+PFOS	2842		

IW-2	S	I	D
PFOA	7.2 *5-		
PFOS	380 *5-		
PFBS	3.7		
PFOA+PFOS	387.2		

IW-3	S	I	D
PFOA	71 *5-		
PFOS	4300 *5-		
PFBS	24		
PFOA+PFOS	4371		

IW-4	S	I	D
PFOA	4.5		
PFOS	160		
PFBS	2.3		
PFOA+PFOS	164.5		

OW-1SA	S	I	D
PFOA	5.4		
PFOS	340		
PFBS	2.8		
PFOA+PFOS	345.4		

OW-1SB	S	I	D
PFOA	6.5		
PFOS	340 *5-		
PFBS	2		
PFOA+PFOS	346.5		

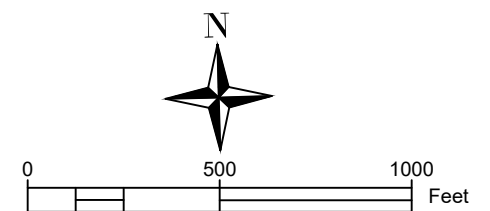
- MONITORING WELL (MW)
- PIEZOMETER (PZ)
- ⊗ INJECTION WELL (IW)
- OBSERVATION WELL (OW)
- ⊕ ARTESIAN WELL

GROUNDWATER ELEVATION CONTOURS IN FEET ABOVE MEAN SEA LEVEL (AMSL)
— SHALLOW SCREEN INTERVAL
— INTERMEDIATE SCREEN INTERVAL
— DEEP SCREEN INTERVAL
 (CONTOURS DASHED WHERE INFERRED)

RESULTS IN NANOGRAMS PER LITER (ng/L)
HIGHLIGHTED RESULTS ARE ABOVE HEALTH ADVISORY LEVEL (HAL) OF 70 ng/L
 FOR PFBS ACT 2 VALUE PENDING

B - ANALYTE WAS FOUND IN BLANK
 J - ESTIMATED VALUE
 ND - NOT DETECTED
 *3 = ISTD RESPONSE OR RETENTION TIME OUTSIDE ACCEPTABLE LIMITS
 *5 = ISOTOPE DILUTION IS OUTSIDE ACCEPTANCE LIMITS, LOW BIASED
 S - SHALLOW ZONE
 I - INTERMEDIATE ZONE
 D - DEEP ZONE

MAP SOURCES: DVRPC, Bucks County North



IRRSC7
 Ridge Run PFAS HSCA Site
 East Rockhill Twp., West Rockhill Twp.,
 and Perkasio Bprouh
 Bucks County, PA

Monitoring Well Sample Results
 April 2021

103S5436015-2070_APRIL-COMBINED 2021.dwg	SCALE AS NOTED
FIGURE NUMBER FIGURE 1	REV A DATE 9/15/21