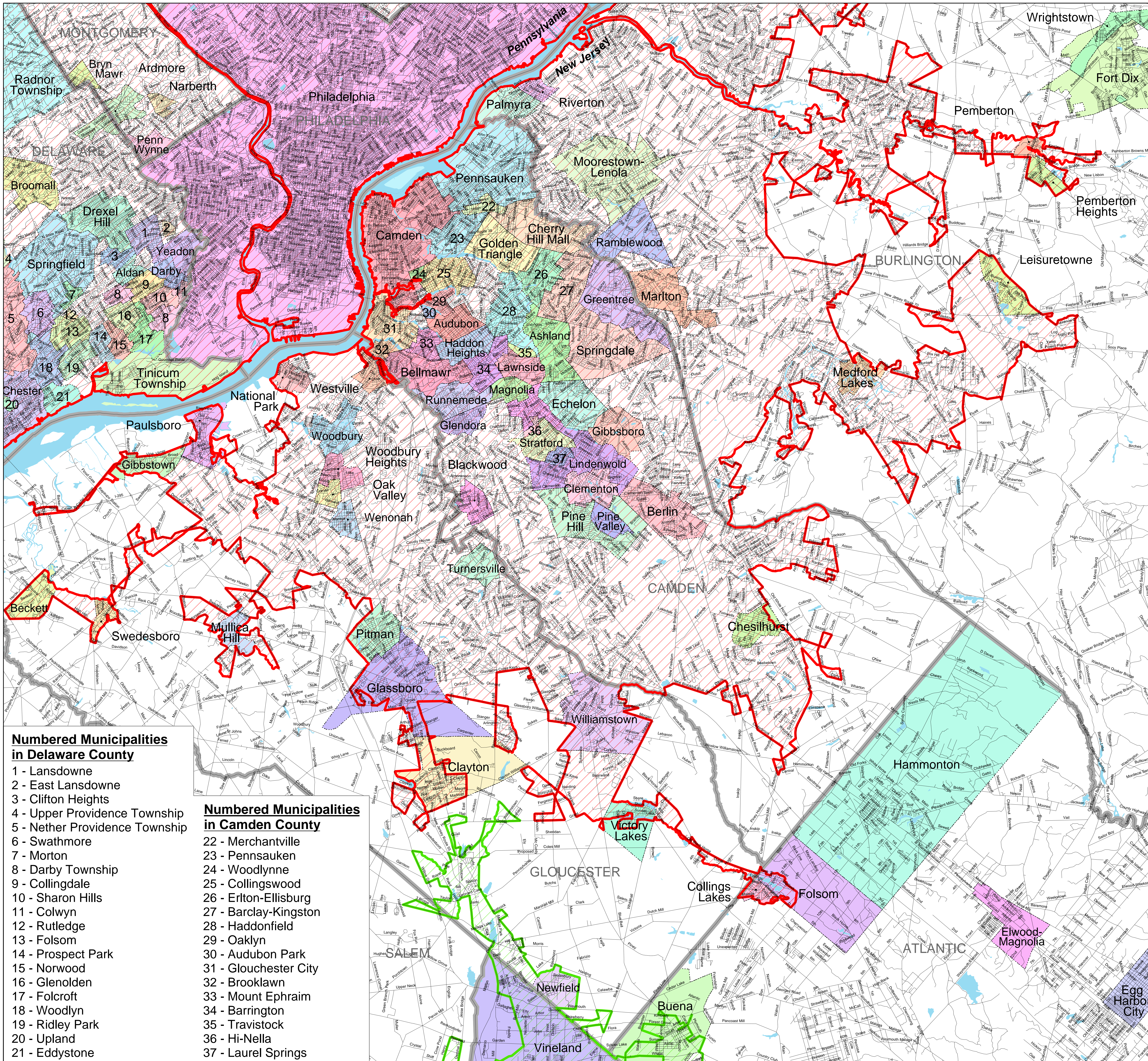


Philadelphia, PA - NJ - DE - MD Urbanized Area- Southeast Portion Storm Water Entities as Defined by the 2000 Census



2000 Census Urbanized Areas

- Philadelphia, PA-NJ-DE-MD
- Vineland, NJ
- Municipal Boundaries
- County Boundaries
- Major Waterbodies
- Roads

SOURCE:
US Census Bureau TIGER data, 2000 Census

PROJECTION:
State Plane Coordinate System - Pennsylvania South
Horizontal datum - NAD83

MAP DESIGN:
September 26, 2002

Numbered Municipalities in Delaware County

- 1 - Lansdowne
- 2 - East Lansdowne
- 3 - Clifton Heights
- 4 - Upper Providence Township
- 5 - Nether Providence Township
- 6 - Swathmore
- 7 - Morton
- 8 - Darby Township
- 9 - Collingdale
- 10 - Sharon Hills
- 11 - Colwyn
- 12 - Rutledge
- 13 - Folsom
- 14 - Prospect Park
- 15 - Norwood
- 16 - Glenolden
- 17 - Folcroft
- 18 - Woodlyn
- 19 - Ridley Park
- 20 - Upland
- 21 - Eddystone

Numbered Municipalities in Camden County

- 22 - Merchantville
- 23 - Pennsauken
- 24 - Woodlynne
- 25 - Collingswood
- 26 - Erlton-Ellisburg
- 27 - Barclay-Kingston
- 28 - Haddonfield
- 29 - Oaklyn
- 30 - Audubon Park
- 31 - Gloucester City
- 32 - Brooklawn
- 33 - Mount Ephraim
- 34 - Barrington
- 35 - Travistock
- 36 - Hi-Nella
- 37 - Laurel Springs

