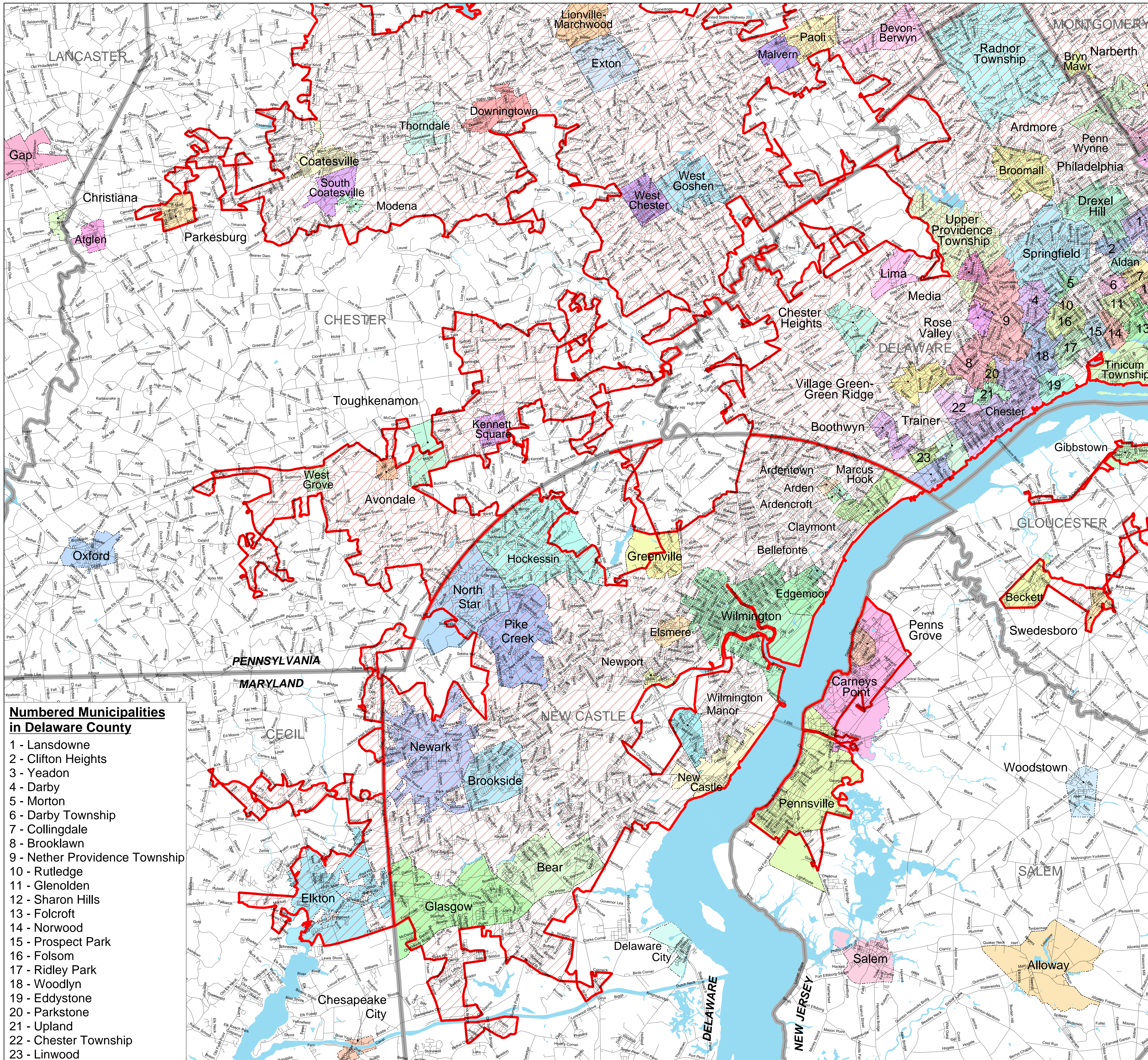


# Philadelphia, PA - NJ - DE - MD Urbanized Area- Southwest Portion Storm Water Entities as Defined by the 2000 Census



- Numbered Municipalities in Delaware County**
- 1 - Lansdowne
  - 2 - Clifton Heights
  - 3 - Yeadon
  - 4 - Darby
  - 5 - Morton
  - 6 - Darby Township
  - 7 - Collingdale
  - 8 - Brooklawn
  - 9 - Nether Providence Township
  - 10 - Rutledge
  - 11 - Glenolden
  - 12 - Sharon Hills
  - 13 - Folcroft
  - 14 - Norwood
  - 15 - Prospect Park
  - 16 - Folsom
  - 17 - Ridley Park
  - 18 - Woodlyn
  - 19 - Eddystone
  - 20 - Parkstone
  - 21 - Upland
  - 22 - Chester Township
  - 23 - Linwood

**2000 Census Urbanized Areas**

- Philadelphia, PA-NJ-DE-MD
- Municipal Boundaries
- County Boundaries
- Major Waterbodies
- Roads

SOURCE:  
US Census Bureau TIGER data, 2000 Census

PROJECTION:  
State Plane Coordinate System - Pennsylvania South  
Horizontal datum - NAD83

MAP DESIGN:  
September 26, 2002

