

AUTHORIZATION TO DISCHARGE UNDER THE NATIONAL POLLUTANT DISCHARGE ELIMINATION SYSTEM DISCHARGE REQUIREMENTS FOR PUBLICLY OWNED TREATMENT WORKS (POTWs)

NPDES PERMIT NO: PA0046388

In compliance with the provisions of the Clean Water Act, 33 U.S.C. Section 1251 *et seq.* ("the Act") and Pennsylvania's Clean Streams Law, as amended, 35 P.S. Section 691.1 *et seq.*,

Butler Township
415 West Butler Drive
Drums, PA 18222

is authorized to discharge from a facility known as **St. Johns STP**, located in **Butler Township, Luzerne County**, to **Nescopeck Creek (TSF/MF)** in Watershed(s) **5-D** in accordance with effluent limitations, monitoring requirements and other conditions set forth in Parts A, B and C hereof.

THIS PERMIT SHALL BECOME EFFECTIVE ON APRIL 1, 2022

THIS PERMIT SHALL EXPIRE AT MIDNIGHT ON MARCH 31, 2027

The authority granted by this permit is subject to the following further qualifications:

1. If there is a conflict between the application, its supporting documents and/or amendments and the terms and conditions of this permit, the terms and conditions shall apply.
2. Failure to comply with the terms, conditions or effluent limitations of this permit is grounds for enforcement action; for permit termination, revocation and reissuance, or modification; or for denial of a permit renewal application. (40 CFR 122.41(a))
3. A complete application for renewal of this permit, or notice of intent to cease discharging by the expiration date, must be submitted to DEP at least 180 days prior to the above expiration date (unless permission has been granted by DEP for submission at a later date), using the appropriate NPDES permit application form. (40 CFR 122.41(b), 122.21(d))

In the event that a timely and complete application for renewal has been submitted and DEP is unable, through no fault of the permittee, to reissue the permit before the above expiration date, the terms and conditions of this permit, including submission of the Discharge Monitoring Reports (DMRs), will be automatically continued and will remain fully effective and enforceable against the discharger until DEP takes final action on the pending permit application. (25 Pa. Code §§ 92a.7(b), (c))

4. This NPDES permit does not constitute authorization to construct or make modifications to wastewater treatment facilities necessary to meet the terms and conditions of this permit.

DATE PERMIT ISSUED March 16, 2022

ISSUED BY *B R Patel*
Bharat Patel, P.E.
Environmental Program Manager
Northeast Regional Office

PART A - EFFLUENT LIMITATIONS, MONITORING, RECORDKEEPING AND REPORTING REQUIREMENTS

I. A. For Outfall 001, Latitude 41° 1' 28", Longitude 76° 0' 30", River Mile Index _____, Stream Code 28102

Receiving Waters: Nescopeck Creek (TSF/MF)

Type of Effluent: Sewage Effluent

1. The permittee is authorized to discharge during the period from **April 1, 2022** through **March 31, 2027**.
2. Based on the anticipated wastewater characteristics and flows described in the permit application and its supporting documents and/or amendments, the following effluent limitations and monitoring requirements apply (see also Additional Requirements and Footnotes).

Parameter	Effluent Limitations						Monitoring Requirements	
	Mass Units (lbs/day) ⁽¹⁾		Concentrations (mg/L)				Minimum ⁽²⁾ Measurement Frequency	Required Sample Type
	Average Monthly	Weekly Average	Instantaneous Minimum	Average Monthly	Weekly Average	Instant. Maximum		
Flow (MGD)	Report	Report Daily Max	XXX	XXX	XXX	XXX	Continuous	Measured
pH (S.U.)	XXX	XXX	6.0	XXX	XXX	9.0	1/day	Grab
Dissolved Oxygen	XXX	XXX	5.0	XXX	XXX	XXX	1/day	Grab
Total Residual Chlorine (TRC)	XXX	XXX	XXX	0.2	XXX	0.3	Daily when Discharging	Grab
Carbonaceous Biochemical Oxygen Demand (CBOD5)	459	734	XXX	25.0	40.0	50.0	2/week	24-Hr Composite
Biochemical Oxygen Demand (BOD5) Raw Sewage Influent	XXX	XXX	XXX	Report	XXX	XXX	2/week	24-Hr Composite
Total Suspended Solids Raw Sewage Influent	XXX	XXX	XXX	Report	XXX	XXX	2/week	24-Hr Composite
Total Suspended Solids	550	826	XXX	30.0	45.0	60.0	2/week	24-Hr Composite
Fecal Coliform (No./100 ml) Oct 1 - Apr 30	XXX	XXX	XXX	2,000 Geo Mean	XXX	10,000	2/week	Grab
Fecal Coliform (No./100 ml) May 1 - Sep 30	XXX	XXX	XXX	200 Geo Mean	XXX	1,000	2/week	Grab

Outfall 001 , Continued (from Permit Effective Date through Permit Expiration Date)

Parameter	Effluent Limitations						Monitoring Requirements	
	Mass Units (lbs/day) ⁽¹⁾		Concentrations (mg/L)				Minimum ⁽²⁾ Measurement Frequency	Required Sample Type
	Average Monthly	Weekly Average	Instantaneous Minimum	Average Monthly	Weekly Average	Instant. Maximum		
E. Coli	XXX	XXX	XXX	XXX	XXX	Report	1/month	Grab
Ultraviolet light transmittance (%)	XXX	XXX	Report	Report	XXX	XXX	1/day	Measured
Ammonia-Nitrogen Nov 1 - Apr 30	257	XXX	XXX	14.0	XXX	28.0	2/week	24-Hr Composite
Ammonia-Nitrogen May 1 - Oct 31	86	XXX	XXX	4.7	XXX	9.3	2/week	24-Hr Composite
Total Phosphorus	Report	XXX	XXX	Report	XXX	XXX	1/week	24-Hr Composite
Nitrate-Nitrite as N	Report	XXX	XXX	Report	XXX	XXX	1/week	24-Hr Composite
Total Kjeldahl Nitrogen	Report	XXX	XXX	Report	XXX	XXX	1/week	24-Hr Composite
Total Nitrogen	Report	XXX	XXX	Report	XXX	XXX	1/month	Calculation
Aluminum, Total	XXX	XXX	XXX	Report	XXX	XXX	1/month	24-Hr Composite
Manganese, Total	XXX	XXX	XXX	Report	XXX	XXX	1/month	24-Hr Composite
Zinc, Total	XXX	XXX	XXX	Report	XXX	XXX	1/month	24-Hr Composite
Iron, Total	XXX	XXX	XXX	Report Avg Quarterly	XXX	XXX	1/quarter	24-Hr Composite

Samples taken in compliance with the monitoring requirements specified above shall be taken at the following location(s):

at Outfall 001 and influent sampling location

PART A - EFFLUENT LIMITATIONS, MONITORING, RECORDKEEPING AND REPORTING REQUIREMENTS

I. B. For Outfall 001, Latitude 41° 1' 28", Longitude 76° 0' 30", River Mile Index _____, Stream Code 28102

Receiving Waters: Nescopeck Creek (TSF/MF)

Type of Effluent: Sewage Effluent

1. The permittee is authorized to discharge during the period from **April 1, 2022** through **March 31, 2026**.
2. Based on the anticipated wastewater characteristics and flows described in the permit application and its supporting documents and/or amendments, the following effluent limitations and monitoring requirements apply (see also Additional Requirements and Footnotes).

Parameter	Effluent Limitations						Monitoring Requirements	
	Mass Units (lbs/day) ⁽¹⁾		Concentrations (mg/L)				Minimum ⁽²⁾ Measurement Frequency	Required Sample Type
	Average Monthly	Average Weekly	Minimum	Average Monthly	Daily Maximum	Instant. Maximum		
Copper, Total	XXX	XXX	XXX	Report	Report	XXX	1/week	24-Hr Composite

Samples taken in compliance with the monitoring requirements specified above shall be taken at the following location(s):

at Outfall 001

PART A - EFFLUENT LIMITATIONS, MONITORING, RECORDKEEPING AND REPORTING REQUIREMENTS

I. C. For Outfall 001, Latitude 41° 1' 28", Longitude 76° 0' 30", River Mile Index _____, Stream Code 28102

Receiving Waters: Nescopeck Creek (TSF/MF)

Type of Effluent: Sewage Effluent

1. The permittee is authorized to discharge during the period from **April 1, 2026** through **March 31, 2027**.
2. Based on the anticipated wastewater characteristics and flows described in the permit application and its supporting documents and/or amendments, the following effluent limitations and monitoring requirements apply (see also Additional Requirements and Footnotes).

Parameter	Effluent Limitations						Monitoring Requirements	
	Mass Units (lbs/day) ⁽¹⁾		Concentrations (mg/L)				Minimum ⁽²⁾ Measurement Frequency	Required Sample Type
	Average Monthly	Average Weekly	Minimum	Average Monthly	Daily Maximum	Instant. Maximum		
Copper, Total	XXX	XXX	XXX	0.0206	0.0321	0.0514	1/week	24-Hr Composite

Samples taken in compliance with the monitoring requirements specified above shall be taken at the following location(s):

at Outfall 001

PART A - EFFLUENT LIMITATIONS, MONITORING, RECORDKEEPING AND REPORTING REQUIREMENTS

I. D. For Outfall 002, Latitude 41° 1' 27.6", Longitude 76° 0' 31.6", River Mile Index _____, Stream Code 28102

Receiving Waters: Nescopeck Creek (TSF/MF)

Type of Effluent: Stormwater

1. The permittee is authorized to discharge during the period from **April 1, 2022** through **March 31, 2027**.
2. Based on the anticipated wastewater characteristics and flows described in the permit application and its supporting documents and/or amendments, the following effluent limitations and monitoring requirements apply (see also Additional Requirements and Footnotes).

Parameter	Effluent Limitations						Monitoring Requirements	
	Mass Units (lbs/day) ⁽¹⁾		Concentrations (mg/L)				Minimum ⁽²⁾ Measurement Frequency	Required Sample Type
	Average Monthly	Average Weekly	Minimum	Average Monthly	Daily Maximum	Instant. Maximum		
Total Suspended Solids	XXX	XXX	XXX	XXX	Report	XXX	1/6 months	Grab
Oil and Grease	XXX	XXX	XXX	XXX	Report	XXX	1/6 months	Grab

Samples taken in compliance with the monitoring requirements specified above shall be taken at the following location(s):

at Outfall 002

PART A - EFFLUENT LIMITATIONS, MONITORING, RECORDKEEPING AND REPORTING REQUIREMENTS

I. E. For Outfall 003, Latitude 41° 1' 27.2", Longitude 76° 0' 34.4", River Mile Index _____, Stream Code 28102

Receiving Waters: Nescopeck Creek (TSF/MF)

Type of Effluent: Stormwater

1. The permittee is authorized to discharge during the period from **April 1, 2022** through **March 31, 2027**.
2. Based on the anticipated wastewater characteristics and flows described in the permit application and its supporting documents and/or amendments, the following effluent limitations and monitoring requirements apply (see also Additional Requirements and Footnotes).

Parameter	Effluent Limitations						Monitoring Requirements	
	Mass Units (lbs/day) ⁽¹⁾		Concentrations (mg/L)				Minimum ⁽²⁾ Measurement Frequency	Required Sample Type
	Average Monthly	Average Weekly	Minimum	Average Monthly	Daily Maximum	Instant. Maximum		
Total Suspended Solids	XXX	XXX	XXX	XXX	Report	XXX	1/6 months	Grab
Oil and Grease	XXX	XXX	XXX	XXX	Report	XXX	1/6 months	Grab

Samples taken in compliance with the monitoring requirements specified above shall be taken at the following location(s):

at Outfall 003

PART A - EFFLUENT LIMITATIONS, MONITORING, RECORDKEEPING AND REPORTING REQUIREMENTS

I. F. For Outfall 004, Latitude 41° 1' 29.9", Longitude 76° 0' 30.6", River Mile Index _____, Stream Code 28102

Receiving Waters: Nescopeck Creek (TSF/MF)

Type of Effluent: Stormwater

1. The permittee is authorized to discharge during the period from **April 1, 2022** through **March 31, 2027**.
2. Based on the anticipated wastewater characteristics and flows described in the permit application and its supporting documents and/or amendments, the following effluent limitations and monitoring requirements apply (see also Additional Requirements and Footnotes).

Parameter	Effluent Limitations						Monitoring Requirements	
	Mass Units (lbs/day) ⁽¹⁾		Concentrations (mg/L)				Minimum ⁽²⁾ Measurement Frequency	Required Sample Type
	Average Monthly	Average Weekly	Minimum	Average Monthly	Daily Maximum	Instant. Maximum		
Total Suspended Solids	XXX	XXX	XXX	XXX	Report	XXX	1/6 months	Grab
Oil and Grease	XXX	XXX	XXX	XXX	Report	XXX	1/6 months	Grab

Samples taken in compliance with the monitoring requirements specified above shall be taken at the following location(s):

at Outfall 004

**PART A - EFFLUENT LIMITATIONS, MONITORING, RECORDKEEPING AND REPORTING REQUIREMENTS
(Continued)**

Additional Requirements

1. The permittee may not discharge:
 - a. Floating solids, scum, sheen or substances that result in observed deposits in the receiving water. (25 Pa Code § 92a.41(c))
 - b. Oil and grease in amounts that cause a film or sheen upon or discoloration of the waters of this Commonwealth or adjoining shoreline, or that exceed 15 mg/l as a daily average or 30 mg/l at any time (or lesser amounts if specified in this permit). (25 Pa. Code § 92a.47(a)(7), § 95.2(2))
 - c. Substances in concentration or amounts sufficient to be inimical or harmful to the water uses to be protected or to human, animal, plant or aquatic life. (25 Pa Code § 93.6(a))
 - d. Foam or substances that produce an observed change in the color, taste, odor or turbidity of the receiving water, unless those conditions are otherwise controlled through effluent limitations or other requirements in this permit. For the purpose of determining compliance with this condition, DEP will compare conditions in the receiving water upstream of the discharge to conditions in the receiving water approximately 100 feet downstream of the discharge to determine if there is an observable change in the receiving water. (25 Pa Code § 92a.41(c))
2. The monthly average percent removal of BOD₅ or CBOD₅ and TSS must be at least 85% for POTW facilities on a concentration basis except where 25 Pa. Code 92a.47(g) and (h) are applicable to facilities with combined sewer overflows (CSOs) or as otherwise specified in this permit. (25 Pa. Code § 92a.47(a)(3))
3. If the permit requires the reporting of average weekly statistical results, the maximum weekly average concentration and maximum weekly average mass loading shall be reported, regardless of whether the results are obtained for the same or different weeks.
4. The permittee shall monitor the sewage effluent discharge(s) for the effluent parameters identified in the Part A limitations table(s) during all bypass events at the facility, using the sample types that are specified in the limitations table(s). Where the required sample type is "composite", the permittee must commence sample collection within one hour of the start of the bypass, wherever possible. The results shall be reported on the Daily Effluent Monitoring supplemental form (3800-FM-BCW0435) and be incorporated into the calculations used to report self-monitoring data on Discharge Monitoring Reports (DMRs).

Footnotes

- (1) When sampling to determine compliance with mass effluent limitations, the discharge flow at the time of sampling must be measured and recorded.
- (2) This is the minimum number of sampling events required. Permittees are encouraged, and it may be advantageous in demonstrating compliance, to perform more than the minimum number of sampling events.

Supplemental Information

- (1) The hydraulic design capacity of 2.2 million gallons per day for the treatment facility is used to prepare the annual Municipal Wasteload Management Report to help determine whether a "hydraulic overload" situation exists, as defined in Title 25 Pa. Code Chapter 94.
- (2) The effluent limitations for Outfall 001 were determined using an effluent discharge rate of 2.2 MGD.
- (3) The organic design capacity of 4,037 lbs BOD₅ per day for the treatment facility is used to prepare the annual Municipal Wasteload Management Report to determine whether an "organic overload" condition exists, as defined in 25 Pa. Code Chapter 94.

PART A - EFFLUENT LIMITATIONS, MONITORING, RECORDKEEPING AND REPORTING REQUIREMENTS

I. G. For Outfall 001, Latitude 41° 1' 28", Longitude 76° 0' 30", River Mile Index _____, Stream Code 28102

Receiving Waters: Nescopeck Creek (TSF/MF)

Type of Effluent: Sewage Effluent

1. The permittee is authorized to discharge during the period from **April 1, 2022** through **March 31, 2027**.
2. Based on the anticipated wastewater characteristics and flows described in the permit application and its supporting documents and/or amendments, the following effluent limitations and monitoring requirements apply (see also Additional Requirements and Footnotes).

Parameter	Effluent Limitations						Monitoring Requirements	
	Mass Units (lbs) ⁽¹⁾		Concentrations (mg/L)				Minimum ⁽²⁾ Measurement Frequency	Required Sample Type
	Total Monthly	Total Annual	Monthly	Monthly Average	Maximum	Instant. Maximum		
Ammonia--N	Report	Report	XXX	Report	XXX	XXX	2/week	24-Hr Composite
Total Kjeldahl Nitrogen	Report	XXX	XXX	Report	XXX	XXX	1/week	24-Hr Composite
Nitrate-Nitrite as N	Report	XXX	XXX	Report	XXX	XXX	1/week	24-Hr Composite
Total Nitrogen	Report	Report	XXX	Report	XXX	XXX	1/month	Calculation
Total Phosphorus	Report	Report	XXX	Report	XXX	XXX	1/week	24-Hr Composite
Net Total Nitrogen	XXX	40,182	XXX	XXX	XXX	XXX	1/year	Calculation
Net Total Phosphorus	XXX	5,357	XXX	XXX	XXX	XXX	1/year	Calculation

Samples taken in compliance with the monitoring requirements specified above shall be taken at the following location(s):

at Outfall 001

Footnotes:

- (1) See Part C for Chesapeake Bay Requirements.
- (2) This is the minimum number of sampling events required. Permittees are encouraged, and it may be advantageous in demonstrating compliance, to perform more than the minimum number of sampling events required.

II. DEFINITIONS

At Outfall (XXX) means a sampling location in outfall line XXX below the last point at which wastes are added to outfall line (XXX), or where otherwise specified.

Average refers to the use of an arithmetic mean, unless otherwise specified in this permit. (40 CFR 122.41(l)(4)(iii))

Best Management Practices (BMPs) means schedules of activities, prohibitions of practices, maintenance procedures and other management practices to prevent or reduce the pollutant loading to surface waters of the Commonwealth. The term also includes treatment requirements, operating procedures and practices to control plant site runoff, spillage or leaks, sludge or waste disposal, or drainage from raw material storage. The term includes activities, facilities, measures, planning or procedures used to minimize accelerated erosion and sedimentation and manage stormwater to protect, maintain, reclaim, and restore the quality of waters and the existing and designated uses of waters within this Commonwealth before, during and after earth disturbance activities. (25 Pa. Code § 92a.2)

Bypass means the intentional diversion of waste streams from any portion of a treatment facility. (40 CFR 122.41(m)(1)(i))

Calendar Week is defined as the seven consecutive days from Sunday through Saturday, unless the permittee has been given permission by DEP to provide weekly data as Monday through Friday based on showing excellent performance of the facility and a history of compliance. In cases when the week falls in two separate months, the month with the most days in that week shall be the month for reporting.

Clean Water Act means the Federal Water Pollution Control Act, as amended. (33 U.S.C.A. §§ 1251 to 1387).

Composite Sample (for all except GC/MS volatile organic analysis) means a combination of individual samples (at least eight for a 24-hour period or four for an 8-hour period) of at least 100 milliliters (mL) each obtained at spaced time intervals during the compositing period. The composite must be flow-proportional; either the volume of each individual sample is proportional to discharge flow rates, or the sampling interval is proportional to the flow rates over the time period used to produce the composite. (EPA Form 2C)

Composite Sample (for GC/MS volatile organic analysis) consists of at least four aliquots or grab samples collected during the sampling event (not necessarily flow proportioned). The samples must be combined in the laboratory immediately before analysis and then one analysis is performed. (EPA Form 2C)

Daily Average Temperature means the average of all temperature measurements made, or the mean value plot of the record of a continuous automated temperature recording instrument, either during a calendar day or during the operating day if flows are of a shorter duration.

Daily Discharge means the discharge of a pollutant measured during a calendar day or any 24-hour period that reasonably represents the calendar day for purposes of sampling. For pollutants with limitations expressed in units of mass, the "daily discharge" is calculated as the total mass of the pollutant discharged over the day. For pollutants with limitations expressed in other units of measurement, the "daily discharge" is calculated as the average measurement of the pollutant over the day. (25 Pa. Code § 92a.2, 40 CFR 122.2)

Daily Maximum Discharge Limitation means the highest allowable "daily discharge."

Discharge Monitoring Report (DMR) means the DEP or EPA supplied form(s) for the reporting of self-monitoring results by the permittee. (25 Pa. Code § 92a.2, 40 CFR 122.2)

Estimated Flow means any method of liquid volume measurement based on a technical evaluation of the sources contributing to the discharge including, but not limited to, pump capabilities, water meters and batch discharge volumes.

Geometric Mean means the average of a set of n sample results given by the nth root of their product.

Grab Sample means an individual sample of at least 100 mL collected at a randomly selected time over a period not to exceed 15 minutes. (EPA Form 2C)

Hauled-In Wastes means any waste that is introduced into a treatment facility through any method other than a direct connection to the sewage collection system. The term includes wastes transported to and disposed of within the treatment facility or other entry points within the collection system.

Hazardous Substance means any substance designated under 40 CFR Part 116 pursuant to Section 311 of the Clean Water Act. (40 CFR 122.2)

Immersion Stabilization (i-s) means a calibrated device is immersed in the wastewater until the reading is stabilized.

Indirect Discharger means a non-domestic discharger introducing pollutants to a Publicly Owned Treatment Works (POTW) or other treatment works. (25 Pa. Code § 92a.2, 40 CFR 122.2)

Industrial User means a source of Indirect Discharge. (40 CFR 403.3)

Instantaneous Maximum Effluent Limitation means the highest allowable discharge of a concentration or mass of a substance at any one time as measured by a grab sample. (25 Pa. Code § 92a.2)

Measured Flow means any method of liquid volume measurement, the accuracy of which has been previously demonstrated in engineering practice, or for which a relationship to absolute volume has been obtained.

Monthly Average Discharge Limitation means the highest allowable average of "daily discharges" over a calendar month, calculated as the sum of all "daily discharges" measured during a calendar month divided by the number of "daily discharges" measured during that month. (25 Pa. Code § 92a.2)

Municipality means a city, town, borough, county, township, school district, institution, authority or other public body created by or pursuant to State law and having jurisdiction over disposal of sewage, industrial wastes, or other wastes. (25 Pa. Code § 92a.2)

Municipal Waste means garbage, refuse, industrial lunchroom or office waste and other material, including solid, liquid, semisolid or contained gaseous material resulting from operation of residential, municipal, commercial or institutional establishments and from community activities; and sludge not meeting the definition of residual or hazardous waste under this section from a municipal, commercial or institutional water supply treatment plant, waste water treatment plant or air pollution control facility. (25 Pa. Code § 271.1)

Publicly Owned Treatment Works (POTW) means a treatment works as defined by §212 of the Clean Water Act, owned by a state or municipality. The term includes any devices and systems used in the storage, treatment, recycling and reclamation of municipal sewage or industrial wastes of a liquid nature. The term also includes sewers, pipes or other conveyances if they convey wastewater to a POTW providing treatment. The term also means the municipality as defined in section 502(4) of the Clean Water Act, which has jurisdiction over the indirect discharges to and the discharges from such a treatment works. (25 Pa Code § 92a.2, 40 CFR 122.2)

Residual Waste means garbage, refuse, other discarded material or other waste, including solid, liquid, semisolid or contained gaseous materials resulting from industrial, mining and agricultural operations and sludge from an industrial, mining or agricultural water supply treatment facility, wastewater treatment facility or air pollution control facility, if it is not hazardous. The term does not include coal refuse as defined in the Coal Refuse Disposal Control Act. The term does not include treatment sludges from coal mine drainage treatment plants, disposal of which is being carried on under and in compliance with a valid permit issued under the Clean Streams Law. (25 Pa Code § 287.1)

Severe Property Damage means substantial physical damage to property, damage to the treatment facilities that causes them to become inoperable, or substantial and permanent loss of natural resources that can reasonably be expected to occur in the absence of a bypass. Severe property damage does not mean economic loss caused by delays in production. (40 CFR 122.41(m)(1)(ii))

Stormwater means the runoff from precipitation, snow melt runoff, and surface runoff and drainage. (25 Pa. Code § 92a.2)

Stormwater Associated With Industrial Activity means the discharge from any conveyance that is used for collecting and conveying stormwater and that is directly related to manufacturing, processing or raw materials storage areas at an industrial plant, and as defined at 40 CFR 122.26(b)(14) (i) – (ix) and (xi) and 25 Pa. Code § 92a.2.

Toxic Pollutant means those pollutants, or combinations of pollutants, including disease-causing agents, which after discharge and upon exposure, ingestion, inhalation or assimilation into any organism, either directly from the environment or indirectly by ingestion through food chains may, on the basis of information available to DEP cause death, disease, behavioral abnormalities, cancer, genetic mutations, physiological malfunctions, including malfunctions in reproduction, or physical deformations in these organisms or their offspring. (25 Pa. Code § 92a.2)

Weekly Average Discharge Limitation means the highest allowable average of "daily discharges" over a calendar week, calculated as the sum of all "daily discharges" measured during a calendar week divided by the number of "daily discharges" measured during that week.

III. SELF-MONITORING, REPORTING AND RECORDKEEPING

A. Representative Sampling

1. Samples and measurements taken for the purpose of monitoring shall be representative of the monitored activity (40 CFR 122.41(j)(1)). Representative sampling includes the collection of samples, where possible, during periods of adverse weather, changes in treatment plant performance and changes in treatment plant loading. If possible, effluent samples must be collected where the effluent is well mixed near the center of the discharge conveyance and at the approximate mid-depth point, where the turbulence is at a maximum and the settlement of solids is minimized. (40 CFR 122.48, 25 Pa. Code § 92a.61)
2. Records Retention (40 CFR 122.41(j)(2))

Except for records of monitoring information required by this permit related to the permittee's sludge use and disposal activities which shall be retained for a period of at least 5 years, all records of monitoring activities and results (including all original strip chart recordings for continuous monitoring instrumentation and calibration and maintenance records), copies of all reports required by this permit, and records of all data used to complete the application for this permit shall be retained by the permittee for 3 years from the date of the sample measurement, report or application. The 3-year period shall be extended as requested by DEP or the EPA Regional Administrator.

3. Recording of Results (40 CFR 122.41(j)(3))

For each measurement or sample taken pursuant to the requirements of this permit, the permittee shall record the following information:

- a. The exact place, date and time of sampling or measurements.
- b. The person(s) who performed the sampling or measurements.
- c. The date(s) the analyses were performed.
- d. The person(s) who performed the analyses.
- e. The analytical techniques or methods used; and the associated detection level.
- f. The results of such analyses.

4. Test Procedures

- a. Facilities that test or analyze environmental samples used to demonstrate compliance with this permit shall be in compliance with laboratory accreditation requirements of Act 90 of 2002 (27 Pa. C.S. §§ 4101-4113) and 25 Pa. Code Chapter 252, relating to environmental laboratory accreditation.
- b. Test procedures (methods) for the analysis of pollutants or pollutant parameters shall be those approved under 40 CFR Part 136 or required under 40 CFR Chapter I, Subchapters N or O, unless the method is specified in this permit or has been otherwise approved in writing by DEP. (40 CFR 122.41(j)(4), 122.44(i)(1)(iv))
- c. Test procedures (methods) for the analysis of pollutants or pollutant parameters shall be sufficiently sensitive. A method is sufficiently sensitive when 1) the method minimum level is at or below the level of the effluent limit established in the permit for the measured pollutant or pollutant parameter; or 2) the method has the lowest minimum level of the analytical methods approved under 40 CFR Part 136 or required under 40 CFR Chapter I, Subchapters N or O, for the measured pollutant or pollutant parameter; or 3) the method is specified in this permit or has been otherwise approved in writing by DEP for the measured pollutant or pollutant parameter. Permittees have the option of providing matrix or sample-specific minimum levels rather than the published levels. (40 CFR 122.44(i)(1)(iv))

5. Quality/Assurance/Control

In an effort to assure accurate self-monitoring analyses results:

- a. The permittee, or its designated laboratory, shall participate in the periodic scheduled quality assurance inspections conducted by DEP and EPA. (40 CFR 122.41(e), 122.41(i)(3))
- b. The permittee, or its designated laboratory, shall develop and implement a program to assure the quality and accurateness of the analyses performed to satisfy the requirements of this permit, in accordance with 40 CFR Part 136. (40 CFR 122.41(j)(4))

B. Reporting of Monitoring Results

1. The permittee shall effectively monitor the operation and efficiency of all wastewater treatment and control facilities, and the quantity and quality of the discharge(s) as specified in this permit. (25 Pa. Code §§ 92a.3(c), 92a.41(a), 92a.44, 92a.61(i) and 40 CFR §§ 122.41(e), 122.44(i)(1))
2. The permittee shall use DEP's electronic Discharge Monitoring Report (eDMR) system to report the results of compliance monitoring under this permit (see www.dep.pa.gov/edmr). Permittees that are not using the eDMR system as of the effective date of this permit shall submit the necessary registration and trading partner agreement forms to DEP's Bureau of Clean Water (BCW) within 30 days of the effective date of this permit and begin using the eDMR system when notified by DEP BCW to do so. (25 Pa. Code §§ 92a.3(c), 92a.41(a), 92a.61(g) and 40 CFR § 122.41(l)(4))
3. Submission of a physical (paper) copy of a Discharge Monitoring Report (DMR) is acceptable under the following circumstances:
 - a. For a permittee that is not yet using the eDMR system, the permittee shall submit a physical copy of a DMR to the DEP regional office that issued the permit during the interim period between the submission of registration and trading partner agreement forms to DEP and DEP's notification to begin using the eDMR system.
 - b. For any permittee, as a contingency a physical DMR may be mailed to the DEP regional office that issued the permit if there are technological malfunction(s) that prevent the successful submission of a DMR through the eDMR system. In such situations, the permittee shall submit the DMR through the eDMR system within 5 days following remedy of the malfunction(s).
4. DMRs must be completed in accordance with DEP's published DMR instructions (3800-FM-BCW0463). DMRs must be received by DEP no later than 28 days following the end of the monitoring period. DMRs are based on calendar reporting periods and must be received by DEP in accordance with the following schedule:
 - Monthly DMRs must be received within 28 days following the end of each calendar month.
 - Quarterly DMRs must be received within 28 days following the end of each calendar quarter, i.e., January 28, April 28, July 28, and October 28.
 - Semiannual DMRs must be received within 28 days following the end of each calendar semiannual period, i.e., January 28 and July 28.
 - Annual DMRs must be received by January 28, unless Part C of this permit requires otherwise.
5. The permittee shall complete all Supplemental Reporting forms (Supplemental DMRs) attached to this permit, or an approved equivalent, and submit the signed, completed forms as attachments to the DMR, through DEP's eDMR system. DEP's Supplemental Laboratory Accreditation Form (3800-FM-BCW0189) must be completed and submitted to DEP with the first DMR following issuance of this permit, and anytime thereafter when changes to laboratories or methods occur. (25 Pa. Code §§ 92a.3(c), 92a.41(a), 92a.61(g) and 40 CFR § 122.41(l)(4))
6. The completed DMR Form shall be signed and certified by either of the following applicable persons, as defined in 25 Pa. Code § 92a.22:

- For a corporation - by a principal executive officer of at least the level of vice president, or an authorized representative, if the representative is responsible for the overall operation of the facility from which the discharge described in the NPDES form originates.
- For a partnership or sole proprietorship - by a general partner or the proprietor, respectively.
- For a municipality, state, federal or other public agency - by a principal executive officer or ranking elected official.

If signed by a person other than the above and for co-permittees, written notification of delegation of DMR signatory authority must be submitted to DEP in advance of or along with the relevant DMR form. (40 CFR § 122.22(b))

7. If the permittee monitors any pollutant at monitoring points as designated by this permit, using analytical methods described in Part A III.A.4. herein, more frequently than the permit requires, the results of this monitoring shall be incorporated, as appropriate, into the calculations used to report self-monitoring data on the DMR. (40 CFR 122.41(l)(4)(ii))

C. Reporting and Notification Requirements

1. Planned Changes to Physical Facilities – The permittee shall give notice to DEP as soon as possible but no later than 30 days prior to planned physical alterations or additions to the permitted facility. A permit under 25 Pa. Code Chapter 91 may be required for these situations prior to implementing the planned changes. A permit application, or other written submission to DEP, can be used to satisfy the notification requirements of this section.

Notice is required when:

- a. The alteration or addition to a permitted facility may meet one of the criteria for determining whether a facility is a new source in 40 CFR §122.29(b). (40 CFR 122.41(l)(1)(i))
 - b. The alteration or addition could significantly change the nature or increase the quantity of pollutants discharged. This notification applies to pollutants which are not subject to effluent limitations in this permit. (40 CFR 122.41(l)(1)(ii))
 - c. The alteration or addition results in a significant change in the permittee's sludge use or disposal practices, and such alteration, addition, or change may justify the application of permit conditions that are different from or absent in the existing permit, including notification of additional use or disposal sites not reported during the permit application process or not reported pursuant to an approved land application plan. (40 CFR 122.41(l)(1)(iii))
 - d. The planned change may result in noncompliance with permit requirements. (40 CFR 122.41(l)(2))
2. Planned Changes to Waste Stream – Under the authority of 25 Pa. Code § 92a.24(a) and 40 CFR 122.42(b), the permittee shall provide notice to DEP and EPA as soon as possible but no later than 45 days prior to any planned changes in the volume or pollutant concentration of its influent waste stream as a result of indirect discharges or hauled-in wastes, as specified in paragraphs 2.a. and 2.b., below. Notice shall be provided on the “Planned Changes to Waste Stream” Supplemental Report (3800-FM-BCW0482), available on DEP’s website. The permittee shall provide information on the quality and quantity of waste introduced into the POTW, and any anticipated impact of the change on the quantity or quality of effluent to be discharged from the POTW (40 CFR 122.42(b)(3)). The Report shall be sent via Certified Mail or other means to confirm DEP’s receipt of the notification. DEP will determine if the submission of a new application and receipt of a new or amended permit is required.
 - a. Introduction of New Pollutants (25 Pa. Code § 92a.24(a), 40 CFR 122.42(b)(1))

New pollutants are defined as parameters that meet one or more of the following criteria:

- (i) Any pollutants that were not detected in the facilities' influent waste stream as reported in the permit application; and have not been approved to be included in the permittee's influent waste stream by DEP in writing.
- (ii) Any new introduction of pollutants into the POTW from an indirect discharger which would be subject to Sections 301 or 306 of the Clean Water Act if it were directly discharging those pollutants. (40 CFR 122.42(b)(1))

The permittee shall provide notification of the introduction of new pollutants in accordance with paragraph 2 above. The permittee may not authorize the introduction of new pollutants until the permittee receives DEP's written approval.

b. Increased Loading of Approved Pollutants (25 Pa. Code § 92a.24(a), 40 CFR 122.42(b)(2))

Approved pollutants are defined as parameters that meet one or more of the following criteria:

- (i) Were detected in the facilities' influent waste stream as reported in the permittee's permit application; or have been previously approved to be included in the permittee's influent waste stream by DEP in writing.
- (ii) Have an effluent limitation or monitoring requirement in this permit.

The permittee shall provide notification of the introduction of increased influent loading (lbs/day) of approved pollutants in accordance with paragraph 2 above when (1) the cumulative increase in influent loading (lbs/day) exceeds 20% of the maximum loading reported in the permit application, or a loading previously approved by DEP and/or EPA, or (2) may cause an exceedance in the effluent of Effluent Limitation Guidelines (ELGs) or limitations in Part A of this permit, or (3) may cause interference or pass through at the POTW (as defined at 40 CFR 403.3), or (4) may cause exceedances of the applicable water quality standards in the receiving stream. Unless specified otherwise in this permit, if DEP does not respond to the notification within 30 days of its receipt, the permittee may proceed with the increase in loading. The acceptance of increased loading of approved pollutants may not result in an exceedance of ELGs or effluent limitations, may not result in a hydraulic or organic overload condition as defined in 25 Pa. Code § 94.1, and may not cause exceedances of the applicable water quality standards in the receiving stream.

3. Reporting Requirements for Hauled-In Wastes

a. Receipt of Residual Waste

- (i) The permittee shall document the receipt of all hauled-in residual wastes (including but not limited to wastewater from conventional oil and gas wells, food processing waste, and landfill leachate), as defined at 25 Pa. Code § 287.1, that are received for processing at the treatment facility. The permittee shall report hauled-in residual wastes on a monthly basis to DEP on the "Hauled In Residual Wastes" Supplemental Report (3800-FM-BCW0450) as an attachment to the DMR. If no residual wastes were received during a month, submission of the Supplemental Report is not required.

The following information is required by the Supplemental Report. The information used to develop the Report shall be retained by the permittee for five years from the date of receipt and must be made available to DEP or EPA upon request.

- (1) The dates that residual wastes were received.
- (2) The volume (gallons) of wastes received.
- (3) The license plate number of the vehicle transporting the waste to the treatment facility.
- (4) The permit number(s) of the well(s) where residual wastes were generated, if applicable.

- (5) The name and address of the generator of the residual wastes.
- (6) The type of wastewater.

The transporter of residual waste must maintain these and other records as part of the daily operational record (25 Pa. Code § 299.219). If the transporter is unable to provide this information or the permittee has not otherwise received the information from the generator, the residual wastes shall not be accepted by the permittee until such time as the permittee receives such information from the transporter or generator.

- (ii) In accordance with 40 CFR Part 435, Subpart C, the permittee shall not accept wastewater pollutants associated with production, field exploration, drilling, well completion, or well treatment for unconventional oil and gas extraction (including, but not limited to, drilling muds, drill cuttings, produced sand, produced water). Unconventional oil and gas means crude oil and natural gas produced by a well drilled into a shale and/or tight formation (including, but not limited to, shale gas, shale oil, tight gas, and tight oil). This prohibition does not apply to wastewater generated from stripper wells as defined at 40 CFR Part 435, Subpart F.
- (iii) If the generator is required to complete a chemical analysis of residual wastes in accordance with 25 Pa. Code § 287.51, the permittee must receive and maintain on file a chemical analysis of the residual wastes it receives. The chemical analysis must conform to the Bureau of Waste Management's Form 26R. Each load of residual waste received must be covered by a chemical analysis if the generator is required to complete it.

b. Receipt of Municipal Waste

- (i) The permittee shall document the receipt of all hauled-in municipal wastes (including but not limited to septage and liquid sewage sludge), as defined at 25 Pa. Code § 271.1, that are received for processing at the treatment facility. The permittee shall report hauled-in municipal wastes on a monthly basis to DEP on the "Hauled In Municipal Wastes" Supplemental Report (3800-FM-BCW0437) as an attachment to the DMR. If no municipal wastes were received during a month, submission of the Supplemental Report is not required.

The following information is required by the Supplemental Report:

- (1) The dates that municipal wastes were received.
 - (2) The volume (gallons) of wastes received.
 - (3) The BOD₅ concentration (mg/l) and load (lbs) for the wastes received.
 - (4) The location(s) where wastes were disposed of within the treatment facility.
- (ii) Sampling and analysis of hauled-in municipal wastes must be completed to characterize the organic strength of the wastes, unless composite sampling of influent wastewater is performed at a location downstream of the point of entry for the wastes. The influent BOD₅ characterization for the treatment facility, as reported in the annual Municipal Wasteload Management Report per 25 Pa. Code Chapter 94, must be representative of the hauled-in municipal wastes received.

4. Unanticipated Noncompliance or Potential Pollution Reporting

- a. Immediate Reporting - The permittee shall immediately report any incident causing or threatening pollution in accordance with the requirements of 25 Pa. Code §§ 91.33 and 92a.41(b).
- (i) If, because of an accident, other activity or incident a toxic substance or another substance which would endanger users downstream from the discharge, or would otherwise result in pollution or create a danger of pollution or would damage property, the permittee shall immediately notify DEP by telephone of the location and nature of the danger. Oral notification to the Department is required as soon as possible, but no later than 4 hours after the permittee becomes aware of the incident causing or threatening pollution.
 - (ii) If reasonably possible to do so, the permittee shall immediately notify downstream users of the waters of the Commonwealth to which the substance was discharged. Such notice shall include the location and nature of the danger.
 - (iii) The permittee shall immediately take or cause to be taken steps necessary to prevent injury to property and downstream users of the waters from pollution or a danger of pollution and, in addition, within 15 days from the incident, shall remove the residual substances contained thereon or therein from the ground and from the affected waters of this Commonwealth to the extent required by applicable law.
- b. The permittee shall report any noncompliance which may endanger health or the environment in accordance with the requirements of 40 CFR 122.41(l)(6). These requirements include the following obligations:
- (i) 24 Hour Reporting - The permittee shall orally report any noncompliance with this permit which may endanger health or the environment within 24 hours from the time the permittee becomes aware of the circumstances. The following shall be included as information which must be reported within 24 hours under this paragraph (40 CFR 122.41(l)(6)(ii)):
 - (1) Any unanticipated bypass which exceeds any effluent limitation in the permit;
 - (2) Any upset which exceeds any effluent limitation in the permit; and
 - (3) Violation of the maximum daily discharge limitation for any of the pollutants listed in the permit as being subject to the 24-hour reporting requirement.
 - (ii) Written Report - A written submission shall also be provided within 5 days of the time the permittee becomes aware of any noncompliance which may endanger health or the environment. The written submission shall contain a description of the noncompliance and its cause; the period of noncompliance, including exact dates and times, and if the noncompliance has not been corrected, the anticipated time it is expected to continue; and steps taken or planned to reduce, eliminate, and prevent reoccurrence of the noncompliance.
 - (iii) Waiver of Written Report - DEP may waive the written report on a case-by-case basis if the associated oral report has been received within 24 hours from the time the permittee becomes aware of the circumstances which may endanger health or the environment. Unless such a waiver is expressly granted by DEP, the permittee shall submit a written report in accordance with this paragraph. (40 CFR 122.41(l)(6)(iii))

5. Other Noncompliance

The permittee shall report all instances of noncompliance not reported under paragraph C.4 of this section or specific requirements of compliance schedules, at the time DMRs are submitted, on the Non-Compliance Reporting Form (3800-FM-BCW0440). The reports shall contain the information listed in paragraph C.4.b.(ii) of this section. (40 CFR 122.41(l)(7))

D. Annual Fee (25 Pa. Code § 92a.62)

Permittees shall pay an annual fee in accordance with 25 Pa. Code § 92a.62. As of the effective date of this permit, the facility covered by the permit is classified in the **Major Sewage Facility >=1 and <5 MGD** fee category, which has an annual fee of **\$3,750**.

Invoices for annual fees will be mailed to permittees approximately three months prior to the due date. In the event that an invoice is not received, the permittee is nonetheless responsible for payment. Permittees may contact the DEP at 717-787-6744 with questions related to annual fees. The fee identified above is subject to change if DEP publishes changes to 25 Pa. Code § 92a.62.

Payment for annual fees shall be remitted to DEP at the address below or through DEP's electronic payment system (www.depgreenport.state.pa.us/NPDESpay) by the due date specified on the invoice. Checks, if used for payment, should be made payable to the Commonwealth of Pennsylvania.

PA Department of Environmental Protection
Bureau of Clean Water
Re: Chapter 92a Annual Fee
P.O. Box 8466
Harrisburg, PA 17105-8466

PART B

I. MANAGEMENT REQUIREMENTS

A. Compliance

1. The permittee shall comply with all conditions of this permit. If a compliance schedule has been established in this permit, the permittee shall achieve compliance with the terms and conditions of this permit within the time frames specified in this permit. (40 CFR 122.41(a)(1))
2. The permittee shall submit reports of compliance or noncompliance, or progress reports as applicable, for any interim and final requirements contained in this permit. Such reports shall be submitted no later than 14 days following the applicable schedule date or compliance deadline. (25 Pa. Code § 92a.51(c), 40 CFR 122.47(a)(4))

B. Permit Modification, Termination, or Revocation and Reissuance

1. This permit may be modified, terminated, or revoked and reissued during its term in accordance with Title 25 Pa. Code § 92a.72 and 40 CFR 122.41(f).
2. The filing of a request by the permittee for a permit modification, revocation and reissuance, or termination, or a notification of planned changes or anticipated noncompliance, does not stay any permit condition. (40 CFR 122.41(f))
3. In the absence of DEP action to modify or revoke and reissue this permit, the permittee shall comply with effluent standards or prohibitions established under Section 307(a) of the Clean Water Act for toxic pollutants within the time specified in the regulations that establish those standards or prohibitions. (40 CFR 122.41(a)(1))

C. Duty to Provide Information

1. The permittee shall furnish to DEP, within a reasonable time, any information which DEP may request to determine whether cause exists for modifying, revoking and reissuing, or terminating this permit, or to determine compliance with this permit. (40 CFR 122.41(h))
2. The permittee shall furnish to DEP, upon request, copies of records required to be kept by this permit. (40 CFR 122.41(h))
3. Other Information - Where the permittee becomes aware that it failed to submit any relevant facts in a permit application, or submitted incorrect information in a permit application or in any report to DEP, it shall promptly submit the correct and complete facts or information. (40 CFR 122.41(l)(8))
4. The permittee shall provide the following information in the annual Municipal Wasteload Management Report, required under the provisions of Title 25 Pa. Code Chapter 94:
 - a. The requirements identified in 25 Pa. Code § 94.12.
 - b. The identity of any indirect discharger(s) served by the POTW which are subject to pretreatment standards adopted under Section 307(b) of the Clean Water Act; the POTW shall also specify the total volume of discharge and estimated concentration of each pollutant discharged into the POTW by the indirect discharger.
 - c. A "Solids Management Inventory" if specified in Part C of this permit.
 - d. The total volume of hauled-in residual and municipal wastes received during the year, by source.
 - e. The Annual Report requirements for permittees required to implement an industrial pretreatment program listed in Part C, as applicable.

D. General Pretreatment Requirements

1. Any POTW (or combination of POTWs operated by the same authority) with a total design flow greater than 5 million gallons per day (MGD) and receiving from industrial users pollutants which pass through or interfere with the operation of the POTW or are otherwise subject to Pretreatment Standards will be required to establish a POTW Pretreatment Program unless specifically exempted by the Approval Authority. A POTW with a design flow of 5 MGD or less may be required to develop a POTW Pretreatment Program if the Approval Authority finds that the nature or volume of the industrial influent, treatment process upsets, violations of effluent limitations, contamination of sludge, or other circumstances warrant in order to prevent interference or pass through. (40 CFR 403.8)
2. Each POTW with an approved Pretreatment Program pursuant to 40 CFR 403.8 shall develop and enforce specific limits to implement the prohibitions listed in 40 CFR 403.5(a)(1) and (b), and shall continue to develop these limits as necessary and effectively enforce such limits. This condition applies, for example, when there are planned changes to the waste stream as identified in Part A III.C.2. If the permittee is required to develop or continue implementation of a Pretreatment Program, detailed requirements will be contained in Part C of this permit.
3. For all POTWs, where pollutants contributed by indirect dischargers result in interference or pass through, and a violation is likely to recur, the permittee shall develop and enforce specific limits for indirect dischargers and other users, as appropriate, that together with appropriate facility or operational changes, are necessary to ensure renewed or continued compliance with this permit or sludge use or disposal practices. Where POTWs do not have an approved Pretreatment Program, the permittee shall submit a copy of such limits to DEP when developed. (25 Pa. Code § 92a.47(d))

E. Proper Operation and Maintenance

1. The permittee shall employ operators certified in compliance with the Water and Wastewater Systems Operators Certification Act (63 P.S. §§ 1001-1015.1).
2. The permittee shall at all times properly operate and maintain all facilities and systems of treatment and control (and related appurtenances) which are installed or used by the permittee to achieve compliance with the terms and conditions of this permit. Proper operation and maintenance includes, but is not limited to, adequate laboratory controls including appropriate quality assurance procedures. This provision also includes the operation of backup or auxiliary facilities or similar systems that are installed by the permittee, only when necessary to achieve compliance with the terms and conditions of this permit. (40 CFR 122.41(e))

F. Duty to Mitigate

The permittee shall take all reasonable steps to minimize or prevent any discharge, sludge use or disposal in violation of this permit that has a reasonable likelihood of adversely affecting human health or the environment. (40 CFR 122.41(d))

G. Bypassing

1. Bypassing Not Exceeding Permit Limitations - The permittee may allow a bypass to occur which does not cause effluent limitations to be exceeded, but only if it also is for essential maintenance to assure efficient operation. These bypasses are not subject to the provisions in paragraphs two, three and four of this section. (40 CFR 122.41(m)(2))
2. Other Bypassing - In all other situations, bypassing is prohibited and DEP may take enforcement action against the permittee for bypass unless:
 - a. A bypass is unavoidable to prevent loss of life, personal injury or "severe property damage." (40 CFR 122.41(m)(4)(i)(A))

- b. There are no feasible alternatives to the bypass, such as the use of auxiliary treatment facilities, retention of untreated wastes, or maintenance during normal periods of equipment downtime. This condition is not satisfied if adequate backup equipment should have been installed in the exercise of reasonable engineering judgment to prevent a bypass which occurred during normal periods of equipment downtime or preventive maintenance. (40 CFR 122.41(m)(4)(i)(B))
 - c. The permittee submitted the necessary notice required in paragraph G.4 below. (40 CFR 122.41(m)(4)(i)(C))
3. DEP may approve an anticipated bypass, after considering its adverse effects, if DEP determines that it will meet the conditions listed in paragraph G.2 above. (40 CFR 122.41(m)(4)(ii))
 4. Notice
 - a. Anticipated Bypass – If the permittee knows in advance of the need for a bypass, it shall submit prior notice, if possible, at least 10 days before the bypass. (40 CFR 122.41(m)(3)(i))
 - b. Unanticipated Bypass – The permittee shall submit oral notice of any unanticipated bypass within 24 hours, regardless of whether the bypass may endanger health or the environment or whether the bypass exceeds effluent limitations. The notice shall be in accordance with Part A III.C.4.b.

H. Sanitary Sewer Overflows (SSOs)

An SSO is an overflow of wastewater, or other untreated discharge from a separate sanitary sewer system (which is not a combined sewer system), which results from a flow in excess of the carrying capacity of the system or from some other cause prior to reaching the headworks of the sewage treatment facility. SSOs are not authorized under this permit. The permittee shall immediately report any SSO to DEP in accordance with Part A III.C.4 of this permit.

I. Termination of Permit Coverage (25 Pa. Code § 92a.74 and 40 CFR 122.64)

1. Notice of Termination (NOT) – If the permittee plans to cease operations or will otherwise no longer require coverage under this permit, the permittee shall submit DEP's NPDES Notice of Termination (NOT) for Permits Issued Under Chapter 92a (3800-BCW-0410), signed in accordance with Part A III.B.6 of this permit, at least 30 days prior to cessation of operations or the date by which coverage is no longer required.
2. Where the permittee plans to cease operations, NOTs must be accompanied with an operation closure plan that identifies how tankage and equipment will be decommissioned and how pollutants will be managed.
3. The permittee shall submit the NOT to the DEP regional office with jurisdiction over the county in which the operation is located.

II. PENALTIES AND LIABILITY

A. Violations of Permit Conditions

Any person violating Sections 301, 302, 306, 307, 308, 318 or 405 of the Clean Water Act or any permit condition or limitation implementing such sections in a permit issued under Section 402 of the Act is subject to civil, administrative and/or criminal penalties as set forth in 40 CFR 122.41(a)(2).

Any person or municipality, who violates any provision of this permit; any rule, regulation or order of DEP; or any condition or limitation of any permit issued pursuant to the Clean Streams Law, is subject to criminal and/or civil penalties as set forth in Sections 602, 603 and 605 of the Clean Streams Law.

B. Falsifying Information

Any person who does any of the following:

- Falsifies, tampers with, or knowingly renders inaccurate any monitoring device or method required to be maintained under this permit, or
- Knowingly makes any false statement, representation, or certification in any record or other document submitted or required to be maintained under this permit (including monitoring reports or reports of compliance or noncompliance)

Shall, upon conviction, be punished by a fine and/or imprisonment as set forth in 18 Pa.C.S.A § 4904 and 40 CFR 122.41(j)(5) and (k)(2).

C. Liability

Nothing in this permit shall be construed to relieve the permittee from civil or criminal penalties for noncompliance pursuant to Section 309 of the Clean Water Act or Sections 602, 603 or 605 of the Clean Streams Law.

Nothing in this permit shall be construed to preclude the institution of any legal action or to relieve the permittee from any responsibilities, liabilities or penalties to which the permittee is or may be subject to under the Clean Water Act and the Clean Streams Law.

D. Need to Halt or Reduce Activity Not a Defense

It shall not be a defense for the permittee in an enforcement action that it would have been necessary to halt or reduce the permitted activity in order to maintain compliance with the conditions of this permit. (40 CFR 122.41(c))

III. OTHER RESPONSIBILITIES

A. Right of Entry

Pursuant to Sections 5(b) and 305 of Pennsylvania's Clean Streams Law, and Title 25 Pa. Code Chapter 92a and 40 CFR §122.41(i), the permittee shall allow authorized representatives of DEP and EPA, upon the presentation of credentials and other documents as may be required by law:

1. To enter upon the permittee's premises where a regulated facility or activity is located or conducted, or where records must be kept under the conditions of this permit; (40 CFR 122.41(i)(1))
2. To have access to and copy, at reasonable times, any records that must be kept under the conditions of this permit; (40 CFR 122.41(i)(2))
3. To inspect at reasonable times any facilities, equipment (including monitoring and control equipment), practices or operations regulated or required under this permit; and (40 CFR 122.41(i)(3))
4. To sample or monitor at reasonable times, for the purposes of assuring permit compliance or as otherwise authorized by the Clean Water Act or the Clean Streams Law, any substances or parameters at any location. (40 CFR 122.41(i)(4))

B. Transfer of Permits

1. Transfers by modification. Except as provided in paragraph 2 of this section, a permit may be transferred by the permittee to a new owner or operator only if this permit has been modified or revoked and reissued, or a minor modification made to identify the new permittee and incorporate such other requirements as may be necessary under the Clean Water Act. (40 CFR 122.61(a))

2. Automatic transfers. As an alternative to transfers under paragraph 1 of this section, any NPDES permit may be automatically transferred to a new permittee if:
 - a. The current permittee notifies DEP at least 30 days in advance of the proposed transfer date in paragraph 2.b. of this section; (40 CFR 122.61(b)(1))
 - b. The notice includes the appropriate DEP transfer form signed by the existing and new permittees containing a specific date for transfer of permit responsibility, coverage and liability between them; (40 CFR 122.61(b)(2))
 - c. DEP does not notify the existing permittee and the proposed new permittee of its intent to modify or revoke and reissue this permit, the transfer is effective on the date specified in the agreement mentioned in paragraph 2.b. of this section; and (40 CFR 122.61(b)(3))
 - d. The new permittee is in compliance with existing DEP issued permits, regulations, orders and schedules of compliance, or that has demonstrated any noncompliance with the existing permits has been resolved by an appropriate compliance action or by the terms and conditions of the permit (including compliance schedules set forth in the permit), consistent with 25 Pa. Code § 92a.51 (relating to schedules of compliance) and other appropriate DEP regulations. (25 Pa. Code § 92a.71)
3. In the event DEP does not approve transfer of this permit, the new owner or operator must submit a new permit application.

C. Property Rights

The issuance of this permit does not convey any property rights of any sort, or any exclusive privilege. (40 CFR 122.41(g))

D. Duty to Reapply

If the permittee wishes to continue an activity regulated by this permit after the expiration date of this permit, the permittee must apply for a new permit. (40 CFR 122.41(b))

E. Other Laws

The issuance of this permit does not authorize any injury to persons or property or invasion of other private rights, or any infringement of state or local law or regulations.

PART C

I. CHESAPEAKE BAY NUTRIENT REQUIREMENTS

A. The Annual Net Total Nitrogen (TN) and Annual Net Total Phosphorus (TP) Mass Load effluent limitations (“Cap Loads”) in Part A of this permit are required in order to meet the downstream water quality standards of the State of Maryland, as required by 25 Pa. Code Chapter 92a, the federal Clean Water Act, and implementing regulations.

B. Definitions

Annual Net Mass Load (lbs): The Annual Total Mass Load for one year beginning October 1st and ending September 30th, adjusted for Credits sold and applied and Offsets applied. Annual Net Mass Loads are compared to Cap Loads to determine compliance.

Cap Load (lbs): The mass load of a pollutant authorized by an NPDES permit. Cap Loads for TN and TP are implemented in NPDES permits by the establishment of Annual Net Mass Load limits. The term “Net” is used to recognize that Credits and Offsets may be used to comply with the limits. The Annual Net Mass Load must be less than or equal to the Cap Load to achieve compliance.

Certification: Written approval by DEP of a proposed pollutant reduction activity to generate credits before the credits are verified and registered to be used to comply with NPDES permit effluent limitations.

Compliance Year: The year-long period starting October 1st and ending September 30th. The Compliance Year will be named for the year in which it ends. For example, the period of October 1, 2015 through September 30, 2016 is compliance year 2016.

Credit: The tradable unit of compliance that corresponds with a unit of reduction of a pollutant as recognized by DEP which, when certified, verified and registered, may be used to comply with NPDES permit effluent limitations.

Delivery Ratio: A ratio that compensates for the natural attenuation of a pollutant as it travels in water before it reaches a defined compliance point.

Offset: The pollutant load reduction measured in pounds (lbs) that is created by an action, activity or technology which when approved by DEP may be used to comply with NPDES permit effluent limitations, conditions and stipulations under 25 Pa. Code Chapter 92a (relating to NPDES permitting, monitoring and compliance.) The offset may only be used by the NPDES permittee that DEP determines is associated with the load reduction achieved by the action, activity or technology.

Registration: An accounting mechanism used by DEP to track certified and verified credits before they may be used to comply with NPDES permit effluent limitations.

Total Mass Load (lbs):

Monthly Total Mass Load = The sum of the actual daily discharge loads for TN and TP (lbs/day) divided by the number of samples per month, multiplied by the number of days in the month in which there was a discharge. The daily discharge load for TN and TP (lbs/day) equals the average daily flow (MGD) on the day of sampling, multiplied by that day’s sample concentration for TN and TP (mg/l), multiplied by 8.34.

Annual Total Mass Load = The sum of the actual daily discharge loads for TN and TP (lbs/day) divided by the number of samples per Compliance Year, multiplied by the number of days in the Compliance Year in which there was a discharge.

Total Nitrogen: For concentration and load, Total Nitrogen is the sum of Total Kjeldahl-N (TKN) plus Nitrite-Nitrate as N (NO₂+NO₃-N), where TKN and NO₂+NO₃-N are measured in the same sample.

Truing Period: The time provided following each Compliance Year for a permittee to comply with Cap Loads through the application of Credits and Offsets. The Truing Period will start on October 1st and end on November 28th of the same calendar year, unless DEP extends this period. During this period, compliance for the specified year may be achieved by using registered Credits that were generated during that Compliance Year. For example, Credits that are used to achieve compliance in Compliance Year 2016 must have been generated during Compliance Year 2016. Approved Offsets that have been generated may also be applied during the Truing Period.

Verification: Assurance that the verification plan contained in a certification, permit or other approval issued by DEP has been implemented. Verification is required prior to registration of the credits for use in an NPDES permit to comply with NPDES permit effluent limitations.

C. Nutrient Credits

1. Credits may be used for compliance with the Cap Loads when authorized under 25 Pa. Code § 96.8 (Use of offsets and tradable credits from pollution reduction activities in the Chesapeake Bay Watershed), including amendments, updates and revisions thereto; in accordance with DEP's Phase 2 WIP Wastewater Supplement (see www.dep.pa.gov/npdes-bay); and in accordance with DEP's Phase 2 WIP Nutrient Trading Supplement (see www.dep.pa.gov/nutrient_trading).
2. Where effluent limitations for TN and/or TP are established in Part A of the permit for reasons other than the Cap Load assigned for protection of the Chesapeake Bay ("local nutrient limits"), the permittee may purchase and apply credits for compliance with the Cap Load(s) only when the permittee has demonstrated that local nutrient limits have been achieved.
3. Where local nutrient limits are established in Part A of the permit, the permittee may sell any credits generated only after the permittee has demonstrated that local nutrient limits have been achieved and those credits have been verified in accordance with the procedures established in the Phase 2 WIP Nutrient Trading Supplement.

D. Use of Offsets for Compliance

1. Offsets can only be used by the permittee to comply with its Cap Loads. Offsets are not eligible for use as Credits.
2. Offsets must be approved by DEP in writing before they may be applied for compliance with Cap Loads.
3. Offsets that are approved under this permit are listed in Part A, Footnotes. These Offsets may be applied each Compliance Year toward compliance with the Cap Loads. The application of these Offsets must be reported on an annual basis. Additional Offsets may be approved throughout the permit term.
4. Offsets may be approved for the connection of on-lot sewage disposal systems that existed prior to January 1, 2003 to public sewers. Twenty five pounds (25 lbs) of TN Offsets per year may be approved for each on-lot system retirement. These approved Offsets are cumulative. For example, if 10 on-lot systems are retired in year 1 (250 lbs TN approved Offsets) and 10 on-lot systems are retired in year 2, 500 lbs TN Offsets may be used toward compliance with the TN Cap Load in year 2 and thereafter.
5. For DEP to approve on-lot system retirement Offsets, the permittee must submit documentation indicating the on-lot systems existed prior to January 1, 2003 and were eliminated by connection to public sewers after January 1, 2003. This documentation must be retained by the permittee for as long as the Offsets are used to achieve compliance with Cap Loads.
6. Offsets may be approved for the transfer of load between facilities owned by the same entity if (1) the facility receiving Offsets does not discharge to waters classified as impaired for nutrients and (2) the Delivery Ratios approved by DEP for TN or TP, as applicable, are the same. Delivery ratios for the facility authorized to discharge under this permit are listed in DEP's Phase 2 Watershed Implementation Plan (WIP) Wastewater Supplement, available at the following website:

www.dep.pa.gov/npdes-bay

Such Offsets may only be applied in the Compliance Year in which the transfer occurred, and are not cumulative.

8. Offsets may be approved for the acceptance of hauled-in septage at the permittee's facility from residential sources within the municipal Act 537 planning area. Three pounds (3 lbs) of TN Offsets per year may be approved per 1,000 gallons of septage accepted and processed at the facility. Offsets may be approved for the acceptance of residential septage only. For the purpose of these Offsets, septage is defined as material removed from a septic tank by pumping. No other hauled-in wastes, including but not limited to holding tank wastes, solids and sludges generated at other facilities, may be approved. Such approved Offsets may only be applied in the Compliance Year in which the septage was accepted, and are not cumulative.

E. Reporting Requirements

1. eDMR System – The permittee shall utilize DEP's electronic Discharge Monitoring Report (eDMR) system to submit DMR data and Supplemental DMR forms.
2. Chesapeake Bay Annual DMR – The permittee shall submit the Chesapeake Bay Annual DMR through the eDMR system to report Annual Total Mass Loads and Annual Net Mass Loads by November 28th following each Compliance Year.
3. Supplemental Reports – The permittee shall utilize DEP's Annual Chesapeake Bay Spreadsheet ("Spreadsheet"), available at www.dep.pa.gov/npdes-bay, to record all nutrient concentrations and loads throughout the Compliance Year. The permittee shall also use the Spreadsheet to document all Credits sold and purchased and Offsets applied in order to calculate the facility's Annual Net Mass Loads for TN and TP. The permittee shall submit the Spreadsheet through the eDMR system as an attachment to the Chesapeake Bay Annual DMR, unless instructed otherwise by DEP.

II. SOLIDS MANAGEMENT

- A. The permittee shall manage and properly dispose of sewage sludge and/or biosolids by performing sludge wasting that maintains an appropriate mass balance of solids within the treatment system. The wasting rate must be developed and implemented considering the specific treatment process type, system loadings, and seasonal variation while maintaining compliance with effluent limitations. Holding excess sludge within clarifiers or in the disinfection process is not permissible.
- B. The permittee shall submit the Supplemental Reports entitled, "Supplemental Report – Sewage Sludge/Biosolids Production and Disposal" (Form No. 3800-FM-BCW0438) and "Supplemental Report – Influent & Process Control" (Form No. 3800-FM-BCW0436), as attachments to the DMR on a monthly basis. When applicable, the permittee shall submit the Supplemental Reports entitled, "Supplemental Report – Hauled In Municipal Wastes" (Form No. 3800-FM-BCW0437) and "Supplemental Report – Hauled In Residual Wastes" (Form No. 3800-FM-BCW0450), as attachments to the DMR.
- C. By March 31 of each year, the permittee shall submit a "Sewage Sludge Management Inventory" that summarizes the amount of sewage sludge and/or biosolids produced and wasted during the calendar year from the system. The "Sewage Sludge Management Inventory" may be submitted with the Municipal Wasteload Management Report required by Chapter 94. This summary shall include the expected sewage sludge production (estimated using the methodology described in the U.S. EPA handbook, "Improving POTW Performance Using the Composite Correction Approach" (EPA-625/6-84-008)), compared with the actual amount disposed during the year. Sludge quantities shall be expressed as dry weight in addition to gallons or other appropriate units.

III. WATER QUALITY-BASED EFFLUENT LIMITATIONS FOR TOXIC POLLUTANTS

A. Final Water Quality Based Effluent Limitations (WQBELs)

The final WQBELs listed below will become effective Four Years from the Permit Effective Date (“WQBEL Effective Date”) unless DEP issues an amendment to this permit prior to that date:

Outfall No.	Pollutant	Average Monthly (mg/L)	Maximum Daily (mg/L)	IMAX (mg/L)
001	Total Copper	0.0206	0.0321	0.0514

These limits are necessary to achieve water quality standards in the receiving waters. The permittee has not demonstrated the ability to achieve these limits as of the effective date of the permit. Prior to the WQBEL Effective Date, the permittee shall complete studies as described below.

B. Site-Specific Data Collection Studies

The WQBELs were developed by DEP using the default or model-derived estimates for the parameters listed below in DEP’s Toxics Management Spreadsheet (TMS). The permittee shall collect site-specific data for all of the parameters listed below and submit the data to DEP as part of a Final WQBEL Compliance Report.

1. **Discharge pollutant concentration coefficients of variability** using DEP’s *Field Data Collection and Evaluation Protocol for Deriving Daily and Hourly Discharge Coefficients of Variation (CV) and Other Discharge Characteristics* (391-2000-024).
2. **(For Hardness-Based Metals) Discharge and background Total Hardness concentrations** using DEP’s *Field Data Collection and Evaluation Protocol for Determining Stream and Point Source Discharge Design Hardness* (391-2000-021).
3. **(For Naturally Occurring Pollutants (e.g. Metals) Only) Background / ambient pollutant concentrations** using DEP’s *Implementation Guidance for the Determination and Use of Background/Ambient Water Quality in the Determination of Wasteload Allocations and NPDES Effluent Limitations for Toxic Substances* (391-2000-022).
4. **(For Metals Only) Chemical translator(s)** using EPA’s *The Metals Translator: Guidance for Calculating A Total Recoverable Permit Limit From A Dissolved Criterion* (EPA 823-B-96-007) or other EPA guidance.
5. **The slope and width of the receiving waters** for the reach of stream modeled by DEP using the TMS as measured in the field.
6. **The velocity of the receiving waters** for the reach of stream modeled by DEP using the TMS as measured through a time of travel study that provides an estimate of velocity under design stream flow conditions.
7. **The acute and chronic partial mix factors** for the reach of stream modeled by DEP using the TMS as determined through a mixing study that provides an estimate of mixing under design stream flow conditions.
8. **(For Highly Volatile Organics Only) Volatilization rates** using DEP’s *Protocol for Estimating First Order Pollutant Fate Coefficients for Volatile Organic Substances* (391-2000-020).

The permittee may, at its discretion, submit a work plan to DEP for review and comment prior to initiating the site-specific data collection studies. If the permittee decides to submit a work plan, DEP’s approval is not necessary prior to commencing the studies.

C. Toxics Reduction Evaluation (TRE)

The permittee shall conduct a TRE in accordance with DEP's *Water Quality Toxics Management Strategy, Appendix C, Permittee Guidance for Conducting a Toxics Reduction Evaluation (TRE)* (361-0100-003). The permittee shall investigate and address the following as part of the TRE:

1. The source(s) of the toxic pollutants in the effluent through a comprehensive review of influent and effluent quality and contributors to the facility, if applicable.
2. An evaluation of approaches and strategies that exist to reduce or eliminate sources in order to achieve the final WQBELs.
3. An evaluation of approaches and strategies that exist to provide treatment to achieve the final WQBELs.
4. An analysis of the feasibility of the approaches and strategies identified in paragraphs 2 and 3, above. If water line corrosion is a known or suspected source of elevated copper concentrations, the permittee shall implement a Copper Corrosion Control Feasibility Study as part of the TRE. The Feasibility Study shall consist, at a minimum, of an evaluation of treatment alternatives, an evaluation of copper solubility, and effects of treatment alternatives on other water treatment processes.

The permittee shall develop a TRE work plan and submit the work plan to DEP for review and comment when requested by DEP. DEP's approval of the work plan is not necessary prior to commencing the TRE.

D. Schedule and Final WQBEL Compliance Report

1. The permittee shall submit complete required studies and a Final WQBEL Compliance Report to DEP in accordance with the following schedule:

Action	Due Date
Complete TRE Work Plan and Submit Work Plan if Requested by DEP	6 Months After Permit Effective Date
Complete and submit TRE Progress Report	18 Months After Permit Effective Date
Complete TRE and Site-Specific Data Collection	30 Months After Permit Effective Date
Begin Implementing Actions Identified in the TRE to Reduce Pollutant Load (if applicable)	30 Months After Permit Effective Date
Submit Final WQBEL Compliance Report	36 Months After Permit Effective Date
Complete Actions Identified in TRE and Comply with Final Permit Limit	48 Months After Permit Effective Date

2. The Final WQBEL Compliance Report shall consist of the following components:
 - a. Site-specific data collected in accordance with paragraph B, above.
 - b. If the permittee is requesting a modification to the final WQBELs based on the site-specific data, the permittee shall submit:
 - (1) Printouts of the TMS using the site-specific data along with all other assumptions and data used by DEP to establish the final WQBELs; and
 - (2) An application (3800-PM-BCW0027b) to DEP for a Major Amendment to the permit.
 - c. A TRE Report including a feasibility analysis or study, if applicable.

- d. An assessment of whether the permittee will be capable of achieving the final WQBELs on the WQBEL Effective Date. The permittee shall notify DEP of one of the following conclusions:
 - (1) The permittee will achieve the final WQBELs on the WQBEL Effective Date. The permittee shall notify DEP of the measures that will be taken to comply.
 - (2) The permittee will or may be able to achieve the final WQBELs, but after the WQBEL Effective Date. The permittee shall notify DEP of its proposed alternative WQBEL Effective Date and include justification for the alternative date.
 - (3) The permittee will not be able to achieve the final WQBELs because all alternatives to control the toxic pollutant(s) are infeasible.
 - e. An application (3800-PM-BCW0027b) for a Major Amendment to the permit if the permittee concludes that it is not capable of achieving the final WQBELs on the WQBEL Effective Date or compliance is infeasible, or if the permittee believes the final WQBELs should be modified based on site-specific data.
3. In response to the receipt of the Final WQBEL Compliance Report, DEP may:
- a. Request additional research, studies or clarification if the permittee concludes that it cannot achieve final WQBELs by the WQBEL Effective Date or compliance is infeasible and DEP disagrees with this conclusion or believes that additional efforts are necessary before reaching this conclusion. The permittee shall comply with the schedule provided by DEP in writing for such additional efforts or an alternative agreed upon schedule.
 - b. Issue a draft Major Amendment to the permit that modifies the WQBELs in response to site-specific data or modifies the WQBEL Effective Date, for public comment.
 - c. Deny the application for a Major Amendment to the permit or place review of the application on hold until additional research or studies requested by DEP are complete.
 - d. Notify the permittee that DEP will consider a time extension to achieve the final WQBELs under 25 Pa. Code § 95.4 for the discharge upon the receipt of a request submitted by the permittee using Form No. 3800-FM-BCW0302, if it can be demonstrated that the criteria for a time extension under § 95.4 are met.
 - a. Notify the permittee that DEP will consider the submission of a site-specific criterion study (SSCS) to further modify WQBELs, where applicable. The permittee shall comply with the requirements set forth in DEP's notification letter for completion of a SSCS, including submission of a SSCS work plan.

IV. WHOLE EFFLUENT TOXICITY (WET)

A. General Requirements

1. The permittee shall conduct Chronic WET tests as specified in this section. The permittee shall collect discharge samples and perform WET tests to generate chronic survival and reproduction data for the cladoceran, *Ceriodaphnia dubia* and chronic survival and growth data for the fathead minnow, *Pimephales promelas*.
2. Samples shall be collected at Outfall 001 in accordance with paragraph E.
3. The permittee shall perform testing using the following dilution series: 10%, 21%, 41%, 71%, and 100% effluent, with a control, where 41% is the facility-specific Target In-Stream Waste Concentration (TIWC).

4. The determination of whether a test endpoint passes or fails shall be made using DEP's WET Analysis Spreadsheet (available at www.dep.pa.gov/wett) by comparing replicate data for the control with replicate data for the TIWC dilution or any dilution greater than the TIWC.
5. The permittee shall submit only valid WET test results to DEP.

B. Test Frequency and Reporting

1. During the first year of permit coverage, WET testing shall be conducted quarterly. After the first year of permit coverage, the permittee shall conduct WET testing as described below.
2. WET testing shall be conducted annually, at a minimum, during the period January 1 – December 31. Annual WET tests must be completed at least 6 months apart, and shall start in the year the permit becomes effective if the permit effective date is prior to October 1.
3. A complete WET test report shall be submitted to the DEP regional office that issued the permit within 45 days of test completion. A complete WET test report submission shall include the information contained in paragraph H, below. The permittee shall continue annual WET monitoring, at a minimum, during the permit renewal review period and during any period of administrative extension of this permit.
4. If a test failure is determined for any endpoint during annual monitoring, the permittee shall initiate a re-test for the species with the failure within 45 days of test completion. All endpoints for the species shall be evaluated in the re-test. The results of the re-test shall be submitted to the DEP regional office that issued the permit.
5. If a passing result is determined for all endpoints in a re-test, the permittee may resume annual monitoring.
6. If there is a failure for one or more endpoints in a re-test, the permittee shall initiate or continue quarterly WET testing for both species until there are four consecutive passing results for all endpoints. The results of all tests shall be submitted to the DEP regional office that issued the permit. In addition, the permittee shall initiate a Phase I Toxicity Reduction Evaluation (TRE) as specified in paragraph C, below.
7. The permittee shall attach the WET Analysis Spreadsheet for the latest four consecutive WET tests to the NPDES permit renewal application that is submitted to DEP at least 180 days prior to the permit expiration date.

C. Phase I Toxicity Reduction Evaluation (TRE)

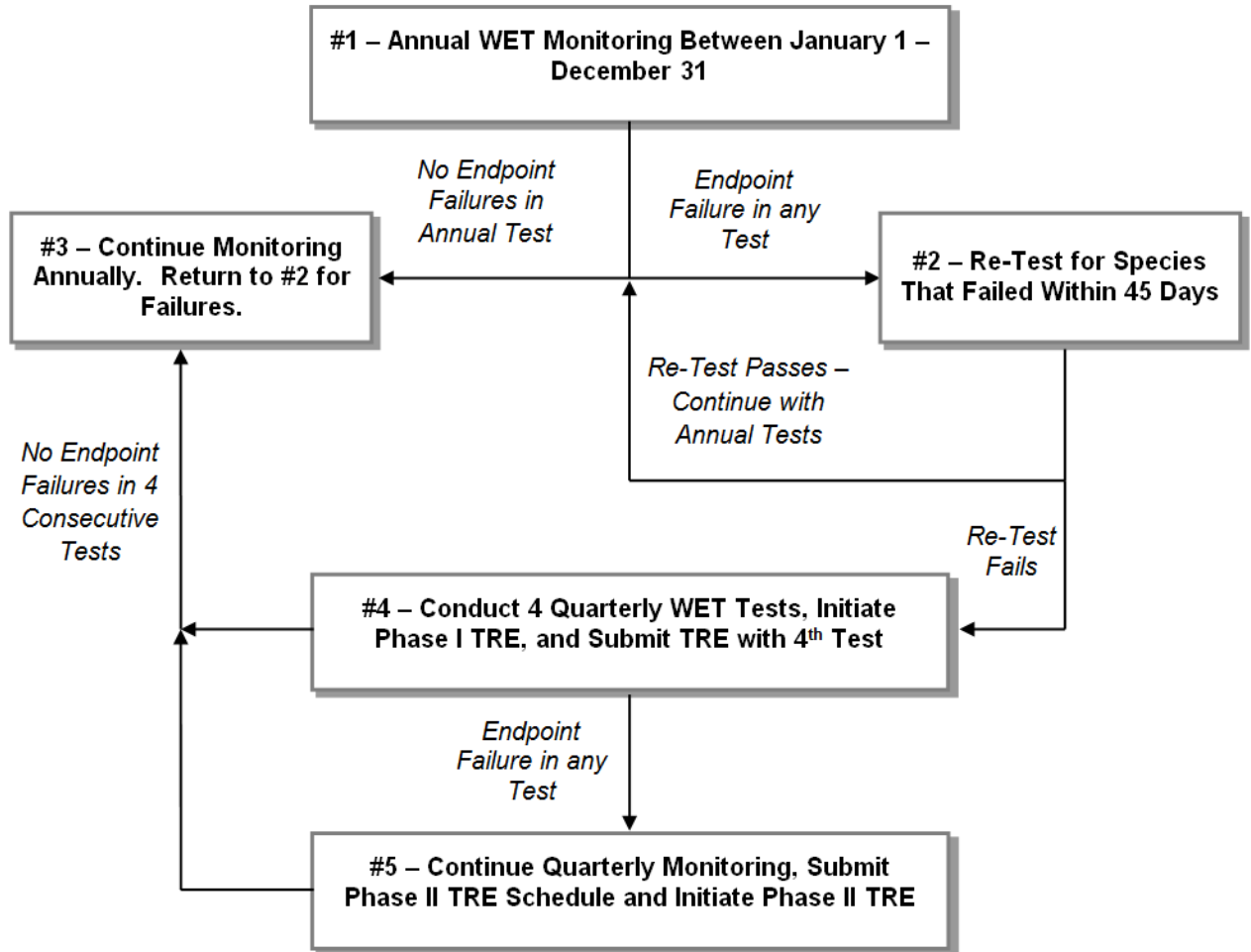
1. The Phase I TRE trigger is one WET endpoint failure followed by a re-test that confirms the failure for the same species. When the TRE process is triggered, quarterly WET testing shall be initiated for both species until there are four consecutive passing results for all endpoints. The Phase I TRE may include a Toxicity Identification Evaluation (TIE) if the permittee cannot immediately identify the possible causes of the effluent toxicity and the possible sources of the causative agents.
2. The permittee shall, within one year following the Phase I TRE trigger, submit a Phase I TRE report to the DEP regional office that issued the permit. The Phase I TRE shall be conducted in accordance with EPA's guidance, "Toxicity Reduction Evaluation for Municipal Wastewater Treatment Plants" (EPA/833B-99/002), "Generalized Methodology for Conducting Industrial Toxicity Reduction Evaluations" (EPA/600/2-88/070), and other relevant EPA guidance, as applicable. If a TIE is conducted as part of the Phase I TRE, it shall conform to EPA's guidance, "Methods for Aquatic Toxicity Identification Evaluations Phase I" (EPA/600/6-91/003), "Phase II" (EPA/600/R-92/080), "Phase III" (EPA/600/R-92/081) and other relevant EPA guidance. The Phase I TRE report shall be submitted with the fourth quarterly WET test report that is completed following the Phase I TRE trigger. The TRE shall include all activities undertaken to identify the cause(s) and source(s) of toxicity and any control efforts.

3. If all four quarterly WET tests produce passing results for all endpoints during the Phase I TRE process, performance of a Phase II TRE is not required, and annual WET testing in accordance with paragraph B.1 may resume.
4. If the four WET tests produce at least one failing result during the Phase I TRE process, the permittee shall continue quarterly WETT monitoring for both species and initiate a Phase II TRE in accordance with paragraph D. In this case, the Phase I TRE must include a schedule for completion of the Phase II TRE. The schedule must include interim milestones and a final completion date not to exceed two years from the initiation of the Phase II TRE. The permittee shall implement the Phase II TRE in accordance with the schedule unless DEP issues written approval to modify the schedule or cease performance of the Phase II TRE.
5. Re-tests during the TRE process are required for invalid tests but are optional and at the discretion of the permittee for valid tests. The results of all re-tests must be submitted to the DEP regional office that issued the permit along with the required elements in paragraph H.

D. Phase II Toxicity Reduction Evaluation (TRE)

1. The Phase II TRE trigger is one WET endpoint failure during performance of the Phase I TRE. A Phase II TRE, if required, shall conform to EPA's guidance, "Toxicity Reduction Evaluation for Municipal Wastewater Treatment Plants" (EPA/833B-99/002), "Generalized Methodology for Conducting Industrial Toxicity Reduction Evaluations" (EPA/600/2-88/070), and other relevant EPA guidance, as applicable. A Phase II TRE evaluates the possible control options to reduce or eliminate the effluent toxicity and the implementation of controls.
2. Once initiated, the Phase II TRE must continue until the source(s) of toxicity are controlled as evidenced by four consecutive WET test passing results for all endpoints, and a final TRE report must be submitted on or before the date specified in the schedule, unless otherwise approved by DEP in writing.
3. If four consecutive quarterly WET tests produce passing results for all endpoints during the Phase II TRE process, annual WET testing in accordance with paragraph B.1 may be initiated or resume.

An overview of the process described in paragraphs B, C and D is presented below:



E. Sample Collection

For each acute testing event, a 24-hour flow-proportioned composite sample shall be collected. For each chronic testing event, three 24-hour flow-proportioned, composite samples shall be collected over a seven day exposure period. The samples must be collected at a frequency of not greater than every two hours and must be flow-proportioned. The samples must be collected at the permit compliance sampling location. Samples must be analyzed within 36 hours from the end of the compositing period and must be placed on ice and held at $\leq 6^{\circ}\text{C}$. Refer to the sample handling and preservation regulations set forth in 40 CFR 136, 25 Pa. Code Chapter 252, The NELAC Institute (TNI) Standard, and the appropriate EPA methods.

F. Test Conditions and Methods

Laboratories must be accredited by the DEP Laboratory Accreditation Program in order to perform and report WET tests for NPDES permit compliance. Laboratories must be either State or NELAP accredited.

1. Acute tests shall be completed in accordance with EPA's "Methods for Measuring the Acute Toxicity of Effluents and Receiving Waters to Freshwater and Marine Organisms" (EPA-821-R-02-012, latest edition). Forty eight (48) hour static non-renewal tests shall be used.
2. Chronic tests shall be completed in accordance with EPA's "Short-term Methods for Estimating the Chronic Toxicity of Effluents and Receiving Waters to Freshwater Organisms" (EPA-821-R-02-013, latest edition). Seven (7) day tests shall be used with renewal every 24 hours.

3. The quality assurance and control (QA/QC) requirements and test acceptability standards specified in EPA's test methods and the requirements set forth in 25 Pa Code Chapter 252 or the TNI Standard must be followed.
4. If the permittee or its accredited laboratory determines that QA/QC requirements and/or test acceptability standards have not been met, a re-test shall be initiated within 45 days. Original test data must be maintained by the laboratory and be submitted to DEP upon request. The justification for a re-test must be clearly documented and kept on file with the sample results.

G. Chemical Analyses

Chemical analyses must follow the requirements of the EPA methods and applicable State and/or Federal regulations.

1. Chemical analysis on effluent samples shall include pH, Conductivity, Total Alkalinity, Total Hardness, Total Residual Chlorine, Total Ammonia (Unionized Ammonia), Dissolved Oxygen and temperature. Chemical analyses as described in the EPA Methods (above) shall be performed for each sampling event, including each new batch of dilution water and each testing event.
2. In addition to the chemical analyses required above, those parameters listed in Part A of the NPDES permit for the outfall(s) tested shall be analyzed concurrently with the WET test by using the method(s) specified in the permit.

H. WET Report Elements

WET test reports that are submitted to DEP must include the requirements identified in 25 Pa. Code § 252.401(j)(1) – (15) or in the TNI Standard, or equivalent, as well as the following information:

1. A general test description, including the origin and age of test organisms, dates and results of reference toxicant tests, light and temperature regimes, and other documentation that QA and test acceptability criteria as specified in EPA's methods and DEP's QA Summaries have been met.
2. A description of sample collection procedures and sampling location.
3. Name(s) of individual(s) collecting and transporting samples, including sample renewals, and the date(s) and time(s) of sample collection.
4. All chemical and physical data including laboratory quantitation limits and observations made on the species. The hardness shall be reported for each test condition.
5. Copies of raw data sheets and/or bench sheets with data entries and signatures.
6. When effluents are dechlorinated, dechlorination procedures must be described and if applicable a thiosulfate control used in addition to the normal dilution water control. If the thiosulfate control results are significantly different from the normal control, as determined using DEP's WET Analysis Spreadsheet, the thiosulfate control shall be used in the spreadsheet for comparison with the TIWC condition. The WET report must specify which control was used to determine whether the test result is pass or fail.
7. A description of all observations or test conditions that may have affected the test outcome.
8. Control charts for the species tested regarding age, temperature test range, mortality data and all reference toxicant tests.
9. A completed WET test summary report (3800-FM-BCW0485).
10. A DEP WET Analysis Spreadsheet printout that provides control and TIWC replicate data and displays the outcome of the test (pass or fail) for each endpoint tested.

WETT reports shall be submitted to the DEP regional office that issued the permit and, for discharges to the Delaware River basin, the Delaware River Basin Commission (DRBC).

V. REQUIREMENTS APPLICABLE TO STORMWATER OUTFALLS

- A. The permittee is authorized to discharge non-polluting stormwater from its site, alone or in combination with other wastewaters, through the following outfalls:

Outfall No.	Area Drained (ft ²)	Latitude	Longitude	Description
002	1,877	41° 1' 27.6"	-76° 0' 31.6"	Road, parking lot
003	21,333	41° 1' 27.2"	-76° 0' 34.4"	SBR tanks, Digester tanks, Effluent pump station
004	11,237	41° 1' 29.9"	-76° 0' 30.6"	SBR tank, Influent screw pump, Effluent pump station

Monitoring requirements and effluent limitations for these outfalls are specified in Part A of this permit, if applicable.

- B. Preparedness, Prevention and Contingency (PPC) Plan

1. The permittee shall develop and implement a PPC Plan in accordance with 25 Pa. Code § 91.34 following the guidance contained in DEP's "Guidelines for the Development and Implementation of Environmental Emergency Response Plans" (DEP ID 400-2200-001), its NPDES-specific addendum and the minimum requirements below.
 - a. The PPC Plan must identify all potential sources of pollutants that may reasonably be expected to affect the quality of stormwater discharges from the facility.
 - b. The PPC Plan must describe preventative measures and BMPs that will be implemented to reduce or eliminate pollutants from coming into contact with stormwater resulting from routine site activities and spills.
 - c. The PPC Plan must address actions that will be taken in response to on-site spills or other pollution incidents.
 - d. The PPC Plan must identify areas which, due to topography or other factors, have a high potential for soil erosion, and identify measures to limit erosion. Where necessary, erosion and sediment control measures must be developed and implemented in accordance with 25 Pa. Code Chapter 102 and DEP's "Erosion and Sediment Pollution Control Manual" (DEP ID 363-2134-008).
 - e. The PPC Plan must address security measures to prevent accidental or intentional entry which could result in an unintentional discharge of pollutants.
 - f. The PPC Plan must include a plan for training employees and contractors on pollution prevention, BMPs, and emergency response measures.
 - g. If the facility is subject to SARA Title III, Section 313, the PPC Plan must identify releases of "Water Priority Chemicals" within the previous three years. Water Priority Chemicals are those identified in EPA's "Guidance for the Determination of Appropriate Methods for the Detection of Section 313 Water Priority Chemicals" (EPA 833-B-94-001, April 1994). The Plan must include an evaluation of all activities that may result in the stormwater discharge of Water Priority Chemicals.
 - h. Spill Prevention Control and Countermeasure (SPCC) plans may be used to meet the requirements of this section if the minimum requirements are addressed.
2. The permittee shall review and if necessary update the PPC Plan on an annual basis, at a minimum,

and when one or more of the following occur:

- a. Applicable DEP or federal regulations are revised, or this permit is revised.
- b. The PPC Plan fails in an emergency.
- c. The facility's design, industrial process, operation, maintenance, or other circumstances change in a manner that materially increases the potential for fires, explosions or releases of toxic or hazardous constituents; or which changes the response necessary in an emergency.
- d. The list of emergency coordinators or equipment changes.
- e. When notified in writing by DEP.

The permittee shall maintain all PPC Plan updates on-site, make the updates available to DEP upon request.

C. Minimum Required BMPs

In addition to BMPs identified in the PPC Plan, the permittee shall implement the following minimum BMPs relating to stormwater pollution prevention:

1. If applicable, post-construction stormwater BMPs that are required under 25 Pa. Code Chapter 102 must be maintained.
2. Manage sludge in accordance with all applicable permit requirements.
3. Store chemicals in secure and covered areas on impervious surfaces away from storm drains.
4. For new facilities and upgrades, design wastewater treatment facilities to avoid, to the maximum extent practicable, stormwater commingling with sanitary wastewater, sewage sludge, and biosolids.
5. Efficiently use herbicides for weed control. Where practicable, use the least toxic herbicide that will achieve pest management objectives. Do not apply during windy conditions.
6. Do not wash parts or equipment over impervious surfaces that wash into storm drains.
7. Implement infiltration techniques, including infiltration basins, trenches, dry wells, porous pavement, etc., wherever practicable

D. Routine Inspections.

Areas contributing to a stormwater discharge associated with industrial activity shall be visually inspected for evidence of, or the potential for, pollutants entering the drainage system. BMPs in the PPC Plan and required by this permit shall be inspected on a semiannual basis, at a minimum, to determine whether they are adequate and properly implemented in accordance with the terms of this permit or whether additional control measures are needed. Documentation of inspections shall be maintained on-site and be made available to DEP upon request.

E. Stormwater Sampling Requirements

If stormwater sampling is required in Part A of this permit, the following requirements apply:

1. All samples shall be collected from the discharge resulting from a storm event that is greater than 0.1 inch in magnitude and that occurs at least 72 hours from the previously measurable (greater than 0.1 inch rainfall) storm event. The 72-hour storm interval is waived when the preceding storm did not yield a measurable discharge, or if the permittee is able to document that a less than 72-hour interval is representative for local storm events during the sample period.
2. Grab samples shall be taken during the first 30 minutes of the discharge. If the collection of a grab sample during the first 30 minutes is not possible, a grab sample can be taken during the first hour of the discharge, in which case the discharger shall provide an explanation of why a grab sample during the first 30 minutes was not possible.

VI. OTHER REQUIREMENTS

- A. No storm water from pavements, area ways, roofs, foundation drains or other sources shall be directly admitted to the sanitary sewers associated with the herein approved discharge.
- B. The approval herein given is specifically made contingent upon the permittee acquiring all necessary property rights by easement or otherwise, providing for the satisfactory construction, operation, maintenance or replacement of all sewers or sewerage structures associated with the herein approved discharge in, along, or across private property, with full rights of ingress, egress and regress.
- C. Collected screenings, slurries, sludges, and other solids shall be handled and disposed of in compliance with 25 Pa. Code, Chapters 271, 273, 275, 283, and 285 (related to permits and requirements for landfilling, land application, incineration, and storage of sewage sludge), Federal Regulation 40 CFR 257, Pennsylvania Clean Streams Law, Pennsylvania Solid Waste Management Act of 1980, and the Federal Clean Water Act and its amendments. The permittee is responsible to obtain or assure that contracted agents have all necessary permits and approvals for the handling, storage, transport, and disposal of solid waste materials generated as a result of wastewater treatment.
- D. Where the permittee does not use chlorine for primary disinfection, but proposes the use of chlorine for cleaning, backup disinfection, or other purposes, the permittee shall notify DEP prior to initiating use of chlorine and monitor TRC concentrations in the effluent on each day in which chlorine is used.
- E. The permittee shall report operation of the ultraviolet (UV) disinfection system on a daily basis using the Daily Effluent Monitoring Form (3800-FM-BCW0435) and the parameter named "UV Functional" The permittee shall report values of "1" for Yes (i.e., the UV system is functional) and "< 1" for No (i.e., the UV system is not functional). The UV system shall be considered functional when all components that are necessary for disinfection to achieve effluent limitations in Part A of this permit are operating properly.