

Application Type Renewal  
Facility Type Storm Water  
Major / Minor Minor

**NPDES PERMIT FACT SHEET  
INDIVIDUAL INDUSTRIAL WASTE (IW)  
AND IW STORMWATER**

Application No. PA0088072  
APS ID 530625  
Authorization ID 1307827

**Applicant and Facility Information**

Applicant Name	<u>Stericycle Inc.</u>	Facility Name	<u>Stericycle Pathological Waste Treatment Facility Berks</u>
Applicant Address	<u>3614 Hoskins Court</u> <u>Hamilton, OH 45011</u>	Facility Address	<u>1525 Chestnut Hill Road</u> <u>Morgantown, PA 19543-9508</u>
Applicant Contact	<u>Don Nuss</u>	Facility Contact	<u>Scott Kropin</u>
Applicant Phone	<u>(513) 543-7073</u>	Facility Phone	<u>(610) 207-2330</u>
Client ID	<u>187069</u>	Site ID	<u>516457</u>
SIC Code	<u>4953</u>	Municipality	<u>Robeson Township</u>
SIC Description	<u>Trans. &amp; Utilities - Refuse Systems</u>	County	<u>Berks</u>
Date Application Received	<u>February 28, 2020</u>	EPA Waived?	<u>Yes</u>
Date Application Accepted	<u>March 9, 2020</u>	If No, Reason	<u></u>
Purpose of Application	<u>NPDES discharge of stormwater associated with industrial activity.</u>		

**Summary of Review**

This is a renewal application for a NPDES individual permit for discharges of stormwater associated with industrial activity located in Robeson Township, Berks County. The permit expired on August 31, 2020. The renewal application was received February 28, 2020. The terms and conditions of the expiring permit were automatically continued since the permittee submitted a timely application for reissuance of the expiring permit. See Figures 1, 2, and 3 for a Site Location, Site Plan, and Site Drainage map.

The facility's SIC code is 4953 (refuse systems) which requires an NPDES permit.

Facility Description: Regulated medical waste collection and processing facility.

If the facility qualified for a PAG-03 NPDES General Permit for Discharges of Stormwater Associated with Industrial Activities, the applicable PAG-03 appendix would be Appendix C based on their SIC Code and facility description.

Since the receiving stream, Hay Creek, has a designated use of EV, the facility is not eligible for a PAG-03 NPDES General Permit for Discharges of Stormwater Associated with Industrial Activities; therefore, the facility must be covered under a NPDES Individual Permit for Discharges of Stormwater Associated with Industrial Activities.

The facility, previously known as Bridgeview Inc., has been in operation since 1986. Since the facility was in operation prior to the redesignation of Hay Creek as Exceptional Value in 1999, the facility was not required to perform the non-discharge alternatives analysis outlined in DEP's Water Quality Antidegradation Implementation Guidance (391-0300-002) for the initial application received on January 15, 1999.

Approve	Deny	Signatures	Date
X		<i>Jacob S. Rakowsky</i> Jacob S. Rakowsky, E.I.T. / Project Manager	4/14/2022
X		<i>Scott M. Arwood</i> Scott M. Arwood, P.E. / Environmental Engineer Manager	4/19/2022

### Summary of Review

The site encompasses approximately 22 acres of wooded land, 2 buildings, and 3 parking lots. The 2 buildings are: Plant 1 – a former pet crematorium that now operates as the administrative building and offices, and Plant 2 – the location of the regulated medical waste operations. Plant 2 has 3 Chem-Clavs that utilize high temperature steam in a pressure vessel to sterilize medical waste making it harmless. The waste is then compacted and shipped off-site in approved containers to approved sanitary landfills for disposal.

Part C permit conditions require semi-annual site inspections as well as implementation of BMPs and implementation of the facility PPC Plan. Given the BMPs in place, the discharge is not expected to have any measurable effect on the water quality of the receiving stream. There are no open violations for the client that would warrant withholding the issuance of this permit. EPA waiver is in effect.

The facility's PPC Plan included with the renewal application was last revised in 2020.

#### Public Participation

DEP will publish notice of the receipt of the NPDES permit application and a tentative decision to issue the individual NPDES permit in the *Pennsylvania Bulletin* in accordance with 25 Pa. Code § 92a.82. Upon publication in the *Pennsylvania Bulletin*, DEP will accept written comments from interested persons for a 30-day period (which may be extended for one additional 15-day period at DEP's discretion), which will be considered in making a final decision on the application. Any person may request or petition for a public hearing with respect to the application. A public hearing may be held if DEP determines that there is significant public interest in holding a hearing. If a hearing is held, notice of the hearing will be published in the *Pennsylvania Bulletin* at least 30 days prior to the hearing and in at least one newspaper of general circulation within the geographical area of the discharge.

Discharge, Receiving Waters and Water Supply Information			
Outfall No.	<u>007</u>	Design Flow (MGD)	<u>N/A (stormwater only)</u>
Latitude	<u>40° 11' 40.00"</u>	Longitude	<u>-75° 55' 14.00"</u>
Wastewater Description: <u>Stormwater associated with industrial activity.</u>			
Receiving Waters	<u>Hay Creek (EV, MF)</u>	Stream Code	<u>01772</u>
NHD Com ID	<u>25982984</u>	RMI	<u>10.17</u>
Drainage Area	<u>0.0365 sq. mi.</u>	Yield (cfs/mi <sup>2</sup> )	<u></u>
Q <sub>7-10</sub> Flow (cfs)	<u>0.00332 cfs</u>	Q <sub>7-10</sub> Basis	<u>StreamStats</u>
Watershed No.	<u>3-C</u>	Chapter 93 Class.	<u>EV, MF</u>
Existing Use	<u></u>	Existing Use Qualifier	<u></u>
Exceptions to Use	<u></u>	Exceptions to Criteria	<u></u>
Assessment Status	<u>Attaining Use(s)</u>		
Cause(s) of Impairment	<u></u>		
Source(s) of Impairment	<u></u>		
TMDL Status	<u></u>	Name	<u></u>
Nearest Downstream Public Water Supply Intake	<u>Birdsboro Muni Water Auth</u>		
PWS Waters	<u>Hay Creek (EV, MF)</u>	Location	<u>Robeson Twp, Berks County</u>
		Distance from Outfall (mi)	<u>~10</u>

Drainage Area: 15,000 SF

% Impervious: 100%

Description of Materials / Activities in Drainage Area Exposed to Precipitation:  
 Driveway and paved parking areas north of Plant 2, as well as roof runoff from Plant 2.

Description of Treatment or BMPs in Drainage Area to Control Pollutants in Stormwater:  
 The processing in Outfall 007 drainage area consists solely of the Chem-Clavs, which do not have emissions, and the Plant processing areas, including the loading/unloading areas (and nearby storm drains), are covered.

**History of Outfalls:**

- In the 1999, a total of 10 stormwater outfalls were permitted for the former Bridgeview, Inc. facility.
- In 2005, there were 10 permitted stormwater outfalls.
- In 2010, there were 10 permitted stormwater outfalls. However, Outfall 006 served as the single, representative outfall for all 10 outfalls. Therefore, Outfall 006 was the only outfall sampled. This was mainly because there was a significant decrease in emissions from the facility with the replacement of the incinerators in Plant 2 with Chem Clav Units.
- In 2015, the facility was inspected, and it was recommended that Outfall 007 replace Outfall 006 as the representative outfall. Outfall 007 has a higher risk of receiving stormwater impacted by the operations from the loading/unloading areas in front of Plant 2 plus the paved parking areas north of Plant 2. Therefore, Outfall 007 was the only outfall that was required to be sampled. All 10 outfalls were still permitted and included in Part C of the permit.

**Proposed Changes:**

None. Outfall 007 will continue to be the representative sampling location. Outfalls 001, 002, 003, 004, 005, 006, 008, 009, and 010 will continue to be listed in Part C Special Conditions. All 10 outfalls should still be routinely inspected per Part C.III of the permit and should be included in the Annual Report where applicable.

<b>Compliance History</b>	
<b>Summary of DMRs:</b>	A summary of available DMR data from 2019 can be found in Table 1 in the Proposed Effluent Limitations and Monitoring Requirements Section.
<b>Summary of Inspections:</b>	The facility was most recently inspected on 8/19/2021. No violations were noted. There are currently no open violations for the client.

**Proposed Effluent Limitations and Monitoring Requirements**

**Table 1. Outfall 007 Sampling Results since 1/1/2019**

	2019		2020		2021	
	Jan-June	July-Dec	Jan-June	July-Dec	Jan-June	July-Dec
CBOD5 (mg/L)	4	< 2.0	3.7	< 2.0	11.5	9.8
COD (mg/L)	77	< 25	31	< 25	59	56
Total Iron (mg/L)	2.78	1.54	0.34	0.08	1.29	0.88
Oil and Grease (mg/L)	< 5	< 5	7	< 6	12	< 5
pH (S.U.)	7.86	6.62	7.66	6.83	7.78	8.31
TKN (mg/L)	1.08	0.89	1.1	< 0.5	0.95	2.05
TP (mg/L)	0.22	0.14	0.29	0.1	0.18	0.11
TSS (mg/L)	120	33	12	2	56	19

Based on the facility's **SIC Code of 4953**, the **applicable PAG-03** NPDES Permit for Discharges of Stormwater Associated with Industrial Activity (effective 9/24/16 and currently administratively extended) appendix is **Appendix C**, which would include the following monitoring requirements:

**Table 2. PAG-03, Appendix C Requirements**

Parameter	Monitoring Requirements		Benchmark Values
	Minimum Measurement Frequency	Sample Type	
pH (S.U.)	1 / 6 months	Grab	XXX
Total Suspended Solids (TSS) (mg/L)	1 / 6 months	Grab	100
Chemical Oxygen Demand (COD) (mg/L)	1 / 6 months	Grab	120
Ammonia-Nitrogen (mg/L)	1 / 6 months	Grab	XXX
Total Iron (mg/L)	1 / 6 months	Grab	XXX

The proposed parameters and monitoring requirements for Outfall 007:

**Table 3. Proposed Monitoring Requirements**

Parameter	Effluent Limitations				Monitoring Requirements	
	Concentrations (mg/L)				Minimum Measurement Frequency	Required Sample Type
	Minimum	Average Monthly	Daily Maximum	Instant. Maximum		
pH (S.U.)	XXX	XXX	Report	XXX	1/6 months	Grab
TSS (mg/L)	XXX	XXX	Report	XXX	1/6 months	Grab
COD (mg/L)	XXX	XXX	Report	XXX	1/6 months	Grab
Oil and Grease (mg/L)	XXX	XXX	Report	XXX	1/6 months	Grab
Ammonia-Nitrogen (mg/L)	XXX	XXX	Report	XXX	1/6 months	Grab
Total Iron (mg/L)	XXX	XXX	Report	XXX	1/6 months	Grab

All required parameters from PAG-03 Appendix C are included in this permit. In addition, Oil and Grease will be retained since there is potential for pollution from trucking activity in the loading/unloading areas, driveway, and parking lots. Benchmarks for TSS of 100 mg/L, COD of 120 mg/L, and Oil and Grease of 30 mg/l are included, which is typical of the monitoring requirements for the PAG-03 (effective 9/24/16 and currently administratively extended). The BMPs from Appendix C are included. The requirement to submit an Annual Report is included. The requirement for routine inspections on a semiannual basis is included.

**Antidegradation (93.4):**

The applicant has an existing discharge to an Exceptional Value (EV) water. Module 1 (Anti Degradation Module) was attached to the application. As noted in the Summary of Review, the facility, previously known as Bridgeview Inc., has been in operation since 1986. Since the facility was in operation prior to the redesignation of Hay Creek as Exceptional Value in 1999, the facility was not required to perform the non-discharge alternatives analysis outlined in DEP's Water Quality Antidegradation Implementation Guidance (391-0300-002) for the initial application received on January 15, 1999.

The effluent limits for this discharge have been developed to ensure that existing instream water uses and the level of water quality necessary to protect the existing uses are maintained and protected. Best Management Practices will ensure that the existing instream uses are protected. No Exceptional Value Waters are impacted by this discharge.

The designated use of the receiving waters are as follows:  
Hay Creek (EV, MF)

**Part C Special Conditions**

- I. Stormwater Outfalls and Authorized Non-Stormwater Discharges
- II. Best Management Practices (BMPs), including applicable BMPs from Appendix C from the PAG-03 (effective 9/24/16 and currently administratively extended)
- III. Routine Inspections
- IV. Preparedness, Prevention, and Contingency (PPC) Plan
- V. Stormwater Monitoring Requirements (including Benchmark for TSS, COD, and Oil and Grease)
- VI. Other Requirements

**I. STORMWATER OUTFALLS AND AUTHORIZED NON-STORMWATER DISCHARGES**

A. The permittee is authorized to discharge non-polluting stormwater from its site through the following outfalls:

Outfall No.	Description
001	Northeast corner of the north parking lot used for truck parking and temporary storage area.
002	East of the north parking lot used for truck parking and temporary storage area.
003	East of the north parking lot used for truck parking and temporary storage area.
004	Vegetated hillside that separates the north parking lot and Plant 2 parking area.
005	East of the north parking lot used for truck parking and temporary storage area.
006	Roof drains and paved parking area that surrounds the Administrative Building and Offices (former Plant 1) and truck scale.
007*	Dock area in front of Plant 2 and paved parking areas north of Plant 2.
008	Plant 2 roof.
009	Northwest corner of the south parking lot used for trailer overflow and truck parking.
010	Northwest corner of the south parking lot used for trailer overflow and truck parking.

\*Representative Outfall

Monitoring requirements and effluent limitations for these outfalls are specified in Part A of this permit, if applicable.

B. The permittee is authorized to discharge the following non-stormwater discharges under this permit:

- Discharges from emergency/unplanned fire-fighting activities;
- Potable water, including water line flushings and fire hydrant flushings, that do not contain measurable concentrations of Total Residual Chlorine (TRC);
- Uncontaminated condensate from air conditioners, coolers/chillers, and other compressors (if treatment through an oil/water separator is provided) and from the outside storage of refrigerated gases or liquids;
- Irrigation drainage;
- Landscape water if such water does not contain pesticides, herbicides or fertilizers;
- Pavement wash waters where no detergents or hazardous cleaning products are used, and the wash waters do not come into contact with oil and grease deposits, sources of pollutants associated with industrial activities, or any other toxic or hazardous materials;
- Routine external building washdown / power wash water that does not use detergents or hazardous cleaning products (e.g., those containing bleach, hydrofluoric acid, muriatic acid, sodium hydroxide, nonylphenols);
- Uncontaminated ground water or spring water;
- Foundation or footing drains where flows are not contaminated with process materials; and
- Incidental windblown mist from cooling towers that collects on rooftops or adjacent portions of a facility, but not intentional discharges from the cooling tower.

**II. BEST MANAGEMENT PRACTICES (BMPs)**

The permittee shall implement and, as necessary, maintain the following BMPs to remain in compliance with this permit.

A. Pollution Prevention and Exposure Minimization.

The permittee shall minimize the exposure of manufacturing, processing, and material storage areas (including

loading and unloading, storage, disposal, cleaning, maintenance, and fueling operations) to rain, snow, snowmelt, and runoff in order to minimize pollutant discharges by either locating industrial materials and activities inside or protecting them with storm resistant coverings wherever feasible. The permittee shall implement and maintain the following measures, at a minimum:

1. Use grading, berming or curbing to prevent runoff of polluted stormwater and divert run-on away from areas that contain polluted stormwater.
2. Locate materials, equipment, and activities so that potential leaks and spills are contained or able to be contained or diverted before discharge to surface waters.
3. Clean up spills and leaks promptly using dry methods (e.g., absorbents) to prevent the discharge of pollutants to surface waters.
4. Store leaky vehicles and equipment indoors or, if stored outdoors, use drip pans and absorbents to prevent the release of pollutants to the environment.
5. Use spill/overflow protection equipment.
6. Perform all vehicle and/or equipment cleaning operations indoors, under cover, or in bermed areas that prevent runoff and run-on and also that capture any overspray.
7. Drain fluids from equipment and vehicles that will be decommissioned, and, for any equipment and vehicles that will remain unused for extended periods of time, inspect at least monthly for leaks.
8. Keep all dumpster lids closed when not in use. For dumpsters and roll off boxes that do not have lids, ensure that discharges have a control (e.g., secondary containment, treatment). This permit does not authorize dry weather discharges from dumpsters or roll off boxes.
9. Minimize contamination of stormwater runoff from fueling areas by implementing the following BMPs where determined to be feasible: cover fueling areas; install oil/water separators or oil and grease traps in fueling area storm drains; use berms to prevent run-on to and runoff from fueling areas; use spill/overflow protection and cleanup equipment; use dry cleanup methods; and/or treat and/or recycle collected stormwater runoff.
10. Train employees routinely (no less than annually) on pollution prevention practices as contained in the PPC Plan.

**B. Good Housekeeping.**

The permittee shall perform good housekeeping measures in order to minimize pollutant discharges including the routine implementation of the following measures, at a minimum:

1. Implement a routine cleaning and maintenance program for all impervious areas of the facility where particulate matter, dust or debris may accumulate to minimize the discharge of pollutants in stormwater. The cleaning and maintenance program must encompass, as appropriate, areas where material loading and unloading, storage, handling and processing occur.
2. Store materials in appropriate containers.
3. Minimize the potential for waste, garbage and floatable debris to be discharged by keeping exposed areas free of such materials, or by intercepting them before they are discharged.
4. Eliminate floor drain connections to storm sewers.
5. Use drip pans, drain boards, and drying racks to direct drips back into a fluid holding tank for reuse. Drain fluids from all equipment and parts prior to disposal. Promptly transfer used fluids to the proper container; do not leave full drip pans or other open containers around the shop. Empty and clean drip pans and containers.



6. Label and track the recycling of waste material (e.g., used oil, spent solvents, batteries).
7. Prohibit the practice of hosing down an area where the practice would result in the discharge of pollutants to a municipal or other storm water collection system that conveys pollutants off-site without proper treatment.

**C. Erosion and Sediment Controls.**

1. The permittee shall minimize erosion and pollutant discharges by stabilizing exposed soils and placing flow velocity dissipation devices at discharge locations to minimize channel and stream bank erosion and scour in the immediate vicinity of stormwater outfalls.
2. The permittee shall conduct all earth disturbance activities and, when applicable, shall maintain all post-construction stormwater management (PCSM) BMPs in accordance with 25 Pa. Code Chapter 102.
3. The permittee may not utilize polymers or other chemicals to treat stormwater unless written permission is obtained from DEP.

**D. Spill Prevention and Responses.**

The permittee shall minimize the potential for leaks, spills and other releases that may be exposed to stormwater and develop a plan consistent with Part C IV for effective responses to such releases. The permittee shall conduct the following spill prevention and response measures, at a minimum:

1. Maintain an organized inventory of materials on-site. Plainly label containers (e.g., "Used Oil," "Spent Solvents," "Fertilizers and Pesticides") that could be susceptible to spillage or leakage to encourage proper handling and facilitate rapid response if spills or leaks occur.
2. Implement procedures for material storage and handling, including the use of secondary containment and barriers between material storage and traffic areas, or a similarly effective means designed to prevent the discharge of pollutants from these areas.
3. Develop and implement employee and contractor training on the procedures for expeditiously stopping, containing, and cleaning up leaks, spills, and other releases. The permittee shall conduct periodic training, no less than annually, and document the training on the Annual Report required by Part A III.C.1.
4. Keep spill kits on-site, located near areas where spills may occur or where a rapid response can be made.
5. Notify appropriate facility personnel when a leak, spill, or other release occurs.
6. To the extent possible, eliminate or reduce the number and amount of hazardous materials and waste by substituting non-hazardous or less hazardous materials of equal function, as determined by the permittee.
7. Clean up leaks, drips, and other spills without using large amounts of water or liquid cleaners. Use absorbents for dry cleanup whenever possible.

When a leak, spill or other release occurs during a 24-hour period that contains a hazardous substance or oil in an amount equal to or in excess of a reportable quantity established under 40 CFR Parts 110, 117 or 302, the permittee shall, in addition to the notification requirements contained in Part A III.C.3 of this permit, notify the National Response Center (NRC) at (800) 424-8802 in accordance with the requirements of 40 CFR Parts 110, 117, and 302 as soon as the permittee becomes aware of the discharge.

**E. Sector- and Site-Specific BMPs.**

1. The permittee shall implement a preventive maintenance program and shall maintain all elements of leachate collection and treatment systems, to prevent commingling of leachate with stormwater, and the integrity and effectiveness of any intermediate or final cover (including repairing the cover as necessary), to minimize the effects of settlement, sinking, and erosion.
2. Provide temporary stabilization (e.g., temporary seeding, mulching, and placing geotextiles on the inactive portions of stockpiles) for the following in order to minimize discharges of pollutants in stormwater: materials

stockpiled for daily, intermediate, and final cover; inactive areas of the landfill; landfills with final covers but where vegetation has yet to establish itself; and land application sites where waste application has been completed but final vegetation has not yet been established.

### **III. ROUTINE INSPECTIONS**

- A. The permittee shall visually inspect the following areas and BMPs on a semiannual basis (calendar periods), at a minimum:
1. Areas where industrial materials or activities are exposed to stormwater.
  2. Areas identified in the PPC Plan as potential pollutant sources.
  3. Areas where spills or leaks have occurred in the past three years.
  4. Stormwater outfalls and locations where authorized non-stormwater discharges may commingle.
  5. Physical BMPs used to comply with this permit.

At least once each calendar year, the routine inspection must be conducted during a period when a stormwater discharge is occurring.

- B. The permittee shall evaluate and document the following conditions, at a minimum, in the Annual Report required by Part A III.C.1 through required inspections:
1. Raw materials, products or wastes that may have or could come into contact with stormwater.
  2. Leaks or spills from equipment, drums, tanks and other containers.
  3. Off-site tracking of industrial or waste materials, or sediment where vehicles enter or exit the site.
  4. Tracking or blowing of raw, final or waste materials from areas of no exposure to exposed areas.
  5. Control measures or BMPs needing replacement, maintenance or repair.
  6. The presence of authorized non-stormwater discharges that were not identified in the permit application and non-stormwater discharges not authorized by this permit.

### **IV. PREPAREDNESS, PREVENTION AND CONTINGENCY (PPC) PLAN**

- A. The permittee shall develop and implement a PPC Plan in accordance with 25 Pa. Code § 91.34 following the guidance contained in DEP's "Guidelines for the Development and Implementation of Environmental Emergency Response Plans" (DEP ID 400-2200-001), its NPDES-specific addendum and the minimum requirements below.
1. The PPC Plan must identify all potential sources of pollutants that may reasonably be expected to affect the quality of stormwater discharges from the facility.
  2. The PPC Plan must describe preventative measures and BMPs that will be implemented to reduce or eliminate pollutants from coming into contact with stormwater resulting from routine site activities and spills.
  3. The PPC Plan must address actions that will be taken in response to on-site spills or other pollution incidents.
  4. The PPC Plan must identify areas which, due to topography or other factors, have a high potential for soil erosion, and identify measures to limit erosion. Where necessary, erosion and sediment control measures must be developed and implemented in accordance with 25 Pa. Code Chapter 102 and DEP's "Erosion and Sediment Pollution Control Manual" (DEP ID 363-2134-008).

5. The PPC Plan must address security measures to prevent accidental or intentional entry which could result in an unintentional discharge of pollutants.
  6. The PPC Plan must include a plan for training employees and contractors on pollution prevention, BMPs, and emergency response measures. This training must be conducted in accordance with Part C II.D.3.
  7. If the facility is subject to SARA Title III, Section 313, the PPC Plan must identify releases of "Water Priority Chemicals" within the previous three years. Water Priority Chemicals are those identified in EPA's "Guidance for the Determination of Appropriate Methods for the Detection of Section 313 Water Priority Chemicals" (EPA 833-B-94-001, April 1994). The Plan must include an evaluation of all activities that may result in the stormwater discharge of Water Priority Chemicals.
  8. Spill Prevention Control and Countermeasure (SPCC) plans may be used to meet the requirements of this section if the minimum requirements are addressed.
- B. The permittee shall review and if necessary update the PPC Plan on an annual basis, at a minimum, and when one or more of the following occur:
1. Applicable DEP or federal regulations are revised, or this permit is revised.
  2. The PPC Plan fails in an emergency.
  3. The facility's design, industrial process, operation, maintenance, or other circumstances change in a manner that materially increases the potential for fires, explosions or releases of toxic or hazardous constituents; or which changes the response necessary in an emergency.
  4. The list of emergency coordinators or equipment changes.
  5. When notified in writing by DEP.

The permittee shall maintain all PPC Plan updates on-site, make the updates available to DEP upon request, and document the updates in Annual Reports.

## **V. STORMWATER MONITORING REQUIREMENTS**

- A. The permittee shall conduct monitoring of its stormwater discharges at the representative outfalls identified in Part A of this permit. The permittee shall document stormwater sampling event information and no exposure conditions for each calendar year on the Annual Report required by Part A III.C.1.
- B. The permittee shall, upon written notice from DEP, install inlets, pipes, and/or other structures or devices that are considered necessary in order to conduct representative stormwater sampling, in accordance with a schedule provided by DEP.
- C. The permittee shall collect all samples from discharges resulting from a storm event that is greater than 0.1 inch in magnitude and that occurs at least 72 hours from the previously measurable (greater than 0.1 inch rainfall) storm event. The 72-hour storm interval is waived when the preceding storm did not yield a measurable discharge, or if the permittee is able to document that a less than 72-hour interval is representative for local storm events during the sample period.
- D. The permittee shall collect all grab samples within the first 30 minutes of a discharge, unless the permittee determines that this is not possible, in which case grab samples must be collected as soon as possible after the first 30 minutes of a discharge. The permittee shall explain why samples could not be collected within the first 30 minutes of any discharge on the Annual Report required by Part A III.C.1.
- E. The permittee shall collect stormwater samples at times when commingling with non-stormwater discharges is not occurring or at locations prior to the commingling of non-stormwater discharges.

F. Stormwater Benchmark Values.

1. A benchmark value is the concentration of a pollutant in stormwater discharges that serves as a threshold for the determination of whether existing site BMPs are effective in controlling stormwater pollution. In the event that stormwater discharge concentrations for a parameter exceeds the benchmark value(s) identified below at the same outfall for two or more consecutive monitoring periods, the permittee shall develop a corrective action plan to reduce the concentrations of the parameters in stormwater discharges.

Parameter	Benchmark Value (mg/L)
Total Suspended Solids	100
Chemical Oxygen Demand	120
Oil and Grease	30

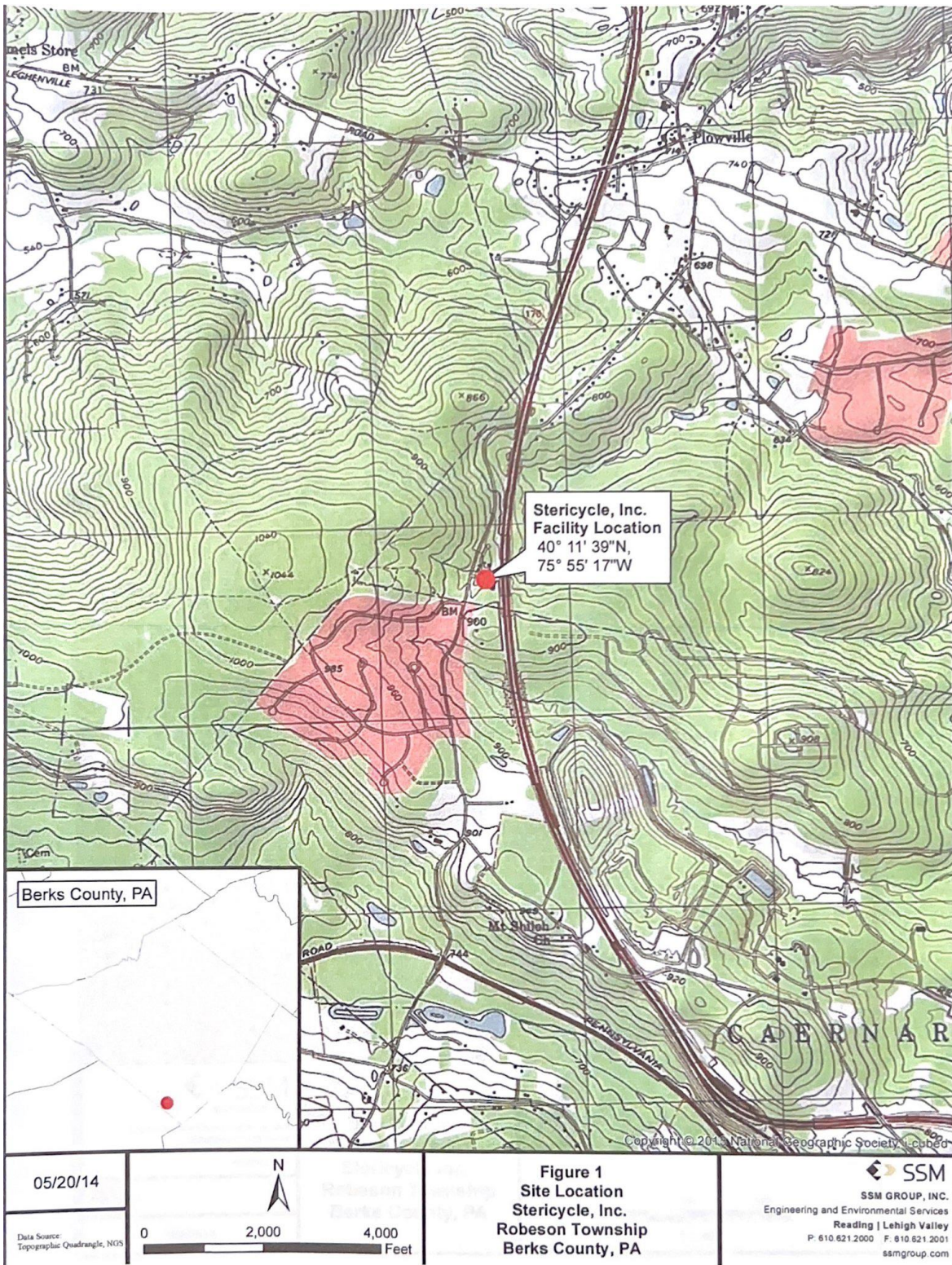
2. The permittee shall submit the corrective action plan to DEP within 90 days of the end of the monitoring period triggering the need for the plan, and shall implement the plan immediately upon submission or at a later time if authorized by DEP in writing. The permittee shall, in developing the plan, evaluate alternatives to reduce stormwater concentrations and select one or more BMPs or control measures for implementation, unless the permittee can demonstrate in the plan that (1) the exceedances are solely attributable to natural background sources; (2) no further pollutant reductions are technologically available and economically practicable and achievable in light of best industry practice; or (3) further pollutant reductions are not necessary to prevent stormwater discharges from causing or contributing to an exceedance of applicable water quality standards.

VI. OTHER REQUIREMENTS

- A. The approval herein given is specifically made contingent upon the permittee acquiring all necessary property rights by easement or otherwise, providing for the satisfactory construction, operation, maintenance or replacement of all structures associated with the herein approved discharge in, along, or across private property, with full rights of ingress, egress and regress.
- B. Collected screenings, slurries, sludges, and other solids shall be handled, recycled and/or disposed of in compliance with the Solid Waste Management Act (35 P.S. §§ 6018.101 – 6018.1003), 25 Pa. Code Chapters 287, 288, 289, 291, 295, 297, and 299 (relating to requirements for landfilling, impoundments, land application, composting, processing, and storage of residual waste), Chapters 261a, 262a, 263a, and 270a (related to identification of hazardous waste, requirements for generators and transporters, and hazardous waste, requirements for generators and transporters, and hazardous waste permit programs), federal regulation 40 CFR Part 257, The Clean Streams Law, and the Federal Clean Water Act and its amendments. Screenings collected at intake structures shall be collected and managed and not be returned to the receiving waters.

The permittee is responsible to obtain or assure that contracted agents have all necessary permits and approvals for the handling, storage, transport and disposal of solid waste materials generated as a result of wastewater and stormwater treatment.









**SSM**  
 SSM GROUP, INC.  
 Engineering and Environmental Services  
 Reading | Lehigh Valley  
 P. 610.621.2000 F. 610.621.2001  
 ssmgroup.com

Data Source:  
 Roads: PennDOT  
 Outfalls: SSM

05/20/14

**Figure 2**  
**Site Plan and**  
**Outfall Locations**  
**Stericycle Inc.**  
**Robeson Township**  
**Berks County, PA**

● Outfalls  
 — Roads

0 100 200  
 Feet  
 1:1,200

C:\projects\10000\10000.dwg (10/20/14) 10/20/14 10:00:00 AM



