

Application Type Renewal  
 Facility Type Non-Municipal  
 Major / Minor Minor

**NPDES PERMIT FACT SHEET  
INDIVIDUAL SEWAGE**

Application No. PA0246522  
 APS ID 360573  
 Authorization ID 1244581

**Applicant and Facility Information**

Applicant Name	<u>Richard Wright</u>	Facility Name	<u>Heritage Cove Resort Campground</u>
Applicant Address	<u>1172 River Road</u> <u>Saxton, PA 16678-7516</u>	Facility Address	<u>1172 River Road Heritage Cove Rv</u> <u>Campground</u> <u>Saxton, PA 16678</u>
Applicant Contact	<u>Richard Wright</u>	Facility Contact	<u>Richard Wright</u>
Applicant Phone	<u>(814) 635-3386</u>	Facility Phone	<u>(814) 635-3386</u>
Client ID	<u>160980</u>	Site ID	<u>554318</u>
Ch 94 Load Status	<u>Not Overloaded</u>	Municipality	<u>Liberty Township</u>
Connection Status	<u>No Limitations</u>	County	<u>Bedford</u>
Date Application Received	<u>August 27, 2018</u>	EPA Waived?	<u>Yes</u>
Date Application Accepted	<u>September 18, 2018</u>	If No, Reason	<u></u>



Adobe Acrobat  
Document

Purpose of Application This is an application request for NPDES renewal.

**Summary of Review**

Approve	Deny	Signatures	Date
X		Nicholas Hong, P.E. / Environmental Engineering Specialist	October 29, 2019
		Daniel W. Martin, P.E. / Environmental Engineer Manager	
		Maria Bebenek, P.E. / Environmental Program Manager	

### Summary of Review

The application submitted by the applicant requests a NPDES renewal permit for the Heritage Cove Resort located at 1172 River Road, Saxton, PA 16678 in Bedford County, municipality of Liberty Township. The existing permit became effective on March 1, 2014 and expired on February 28, 2019. The application for renewal was received by DEP Southcentral Regional Office (SCRO) on August 27, 2018.

The purpose of this Fact Sheet is to present the basis of information used for establishing the proposed NPDES permit effluent limitations. The Fact Sheet includes a description of the facility, a description of the facility's receiving waters, a description of the facility's receiving waters attainment/non-attainment assessment status, and a description of any changes to the proposed monitoring/sampling frequency. Section 6 provides the justification for the proposed NPDES effluent limits derived from technology based effluent limits (TBEL), water quality based effluent limits (WQBEL), total maximum daily loading (TMDL), antidegradation, anti-backsliding, and/or whole effluent toxicity (WET). A brief summary of the outlined descriptions has been included in the Summary of Review section.

The subject facility is a 0.03 MGD (30,000 GPD) treatment facility. The applicant does not anticipate any proposed upgrades to the treatment facility in the next five years. The NPDES application has been processed as a Minor Sewage Facility (Level 1) due to the type of sewage and the design flow rate for the facility. The applicant disclosed the Act 14 requirement to Bedford County Commissioners and Liberty Township and the notice was received by the parties on August 8, 2018. A planning approval letter was not necessary as the facility is neither new or expanding.

Utilizing the DEP's web-based Emap-PA information system, the receiving waters has been determined to be the Raystown Branch Juniata River. The sequence of receiving streams that the Raystown Branch Juniata River discharges into is the Juniata River which eventually drains into the Chesapeake Bay. The subject site is subject to the Chesapeake Bay implementation requirements. The receiving water has protected water usage for migratory fishes (MF) and trout stocking fish (TSF). No Class A Wild Trout fisheries are impacted by this discharge. The absence of high quality and/or exceptional value surface waters removes the need for an additional evaluation of anti-degradation requirements.

The Raystown Branch Juniata River is a Category 2 stream listed in the 2016 Integrated List of All Waters (formerly 303d Listed Streams). This stream is an attaining stream that supports aquatic life. The receiving waters is not subject to a total maximum daily load (TMDL) plan to improve water quality in the subject facility's watershed.

The existing permit and proposed permit differ as follows:

- Due to the Chesapeake Bay Implementation Plan, the facility will be required to monitor at least 1x/yr for ammonia-nitrogen.

The proposed permit will expire five (5) years from the effective date.

Based on the review in this report, it is recommended that the permit be drafted. DEP will publish notice of the receipt of the NPDES permit application and a tentative decision to issue the individual NPDES permit in the *Pennsylvania Bulletin* in accordance with 25 Pa. Code § 92a.82. Upon publication in the *Pennsylvania Bulletin*, DEP will accept written comments from interested persons for a 30-day period (which may be extended for one additional 15-day period at DEP's discretion), which will be considered in making a final decision on the application. Any person may request or petition for a public hearing with respect to the application. A public hearing may be held if DEP determines that there is significant public interest in holding a hearing. If a hearing is held, notice of the hearing will be published in the *Pennsylvania Bulletin* at least 30 days prior to the hearing and in at least one newspaper of general circulation within the geographical area of the discharge.

Any additional information or public review of documents associated with the discharge or facility may be available at PA DEP Southcentral Regional Office (SCRO), 909 Elmerton Avenue, Harrisburg, PA 17110. To make an appointment for file review, contact the SCRO File Review Coordinator at 717.705.4700.

## **1.0 Applicant**

### **1.1 General Information**

This fact sheet summarizes PA Department of Environmental Protection's review for the NPDES renewal for the following subject facility.

Facility Name: Heritage Cove Resort WWTP

NPDES Permit # PA0246522

Physical Address: 1172 River Road  
Saxton, PA 16678

Mailing Address: 1172 River Road  
Saxton, PA 16678

Contact: Richard Wright  
President  
heritagecove@heritagecoveresort.com

Consultant: Justin T. Matincheck, PE ( [jmatincheck@skellyloy.com](mailto:jmatincheck@skellyloy.com) )  
Skelly and Loy  
449 Eisenhower Boulevard, Suite 300  
Harrisburg, PA 17111

### **1.2 Permit History**

The Permit submittal included the following information.

- NPDES Application
- Summary of Sampling data from May 2016 to May 2018
- Summary of Flow Data from 2015 to 2018

## **2.0 Treatment Facility Summary**

### **2.1.1 Site location**

The physical address for the facility is 1172 River Road, Saxton, PA 16678. A topographical and an aerial photograph of the facility are depicted as Figure 1 and Figure 2.

Figure 1: Topographical map of the subject facility

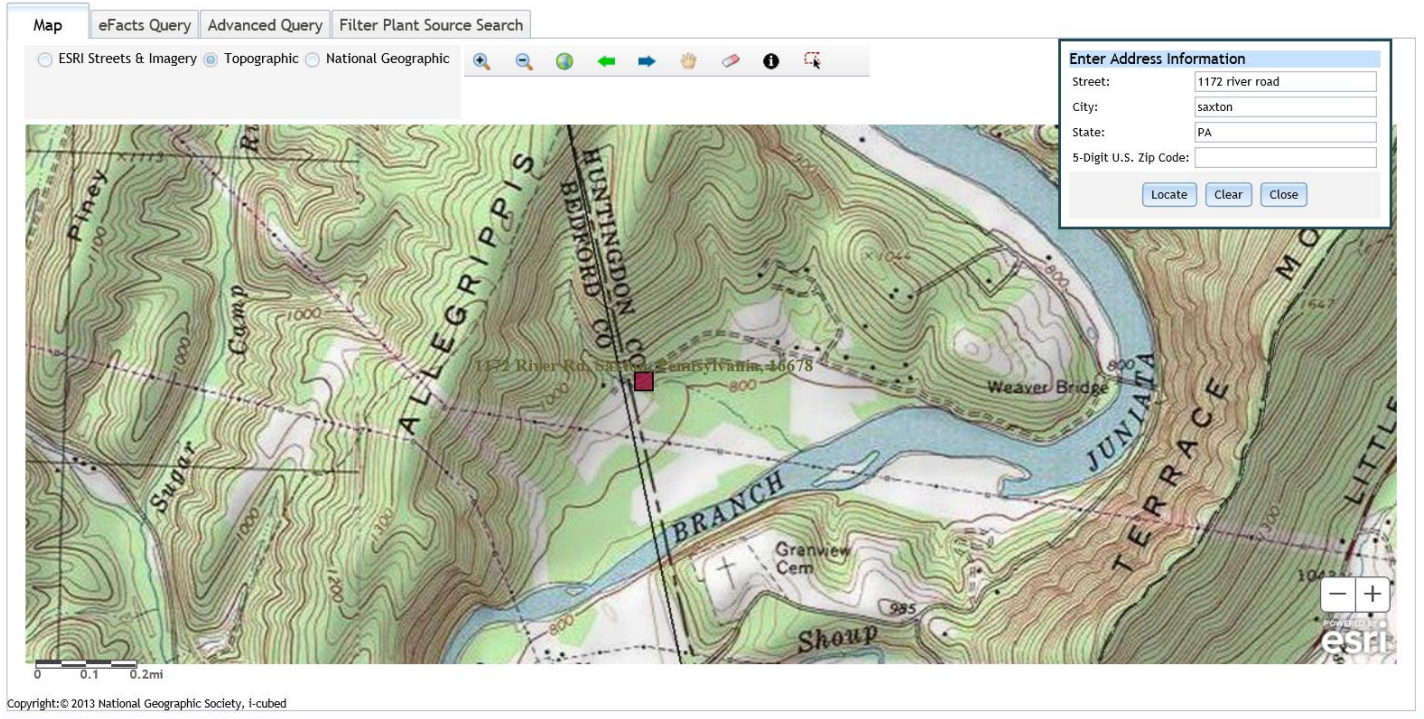
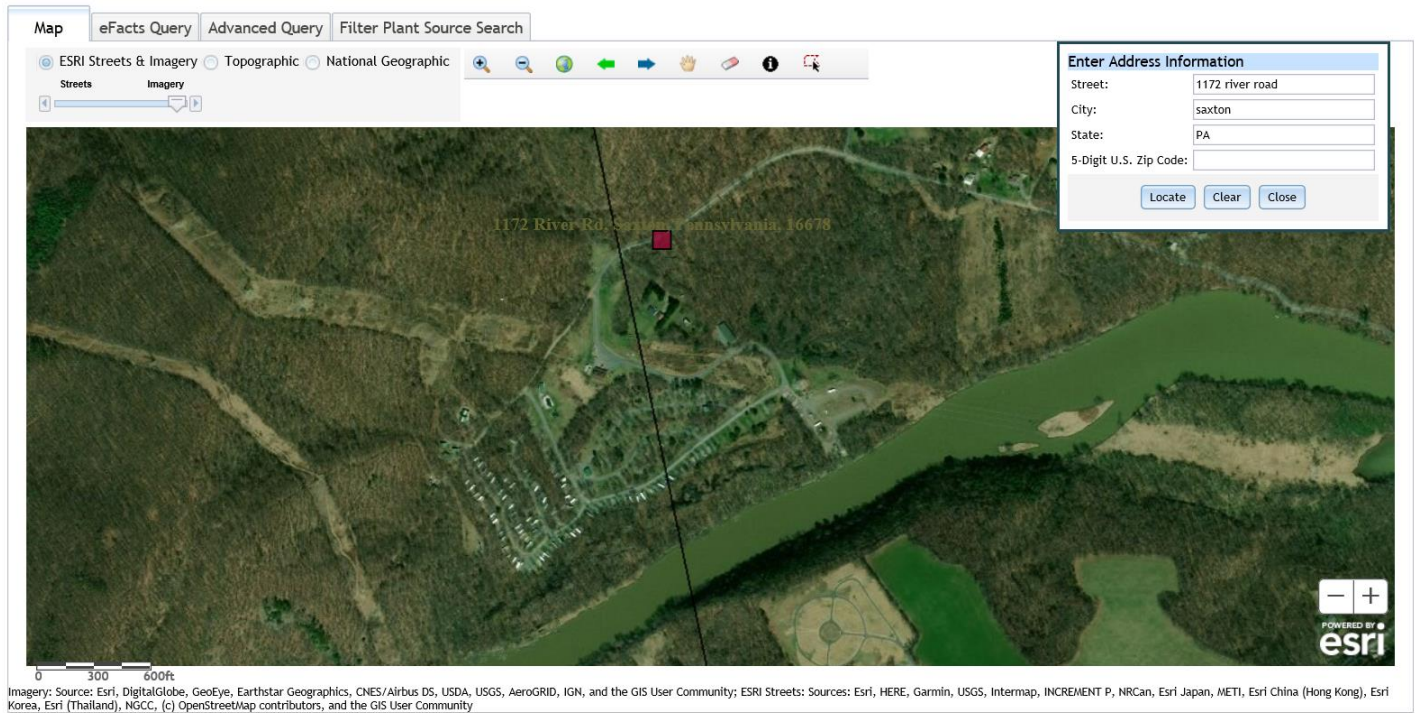


Figure 2: Aerial Photograph of the subject facility



**2.1.2 Sources of Wastewater/Stormwater**

The campground/RV park will service approximately 200 campsites, 23 cabins and a laundry facility (based upon Fact Sheet dated for March 20, 2020).

**2.2 Description of Wastewater Treatment Process**

The subject facility is a 0.03 MGD design flow facility. The subject facility treats wastewater using an equalization basin, an aeration tank, a clarifier, a sand filter(s), and a chlorine contact tank. The facility is being evaluated for flow, pH, dissolved oxygen, TRC, CBOD, TSS, fecal coliform, total nitrogen, nitrogen species, and total phosphorus. The existing permits limits for the facility is summarized in Section 2.4.

The treatment process is summarized in the table.

Treatment Facility Summary				
Treatment Facility Name: Heritage Cove Campground				
Waste Type	Degree of Treatment	Process Type	Disinfection	Avg Annual Flow (MGD)
Sewage	Tertiary	Extended Aeration With Solids Removal	Hypochlorite	0.03
Hydraulic Capacity (MGD)	Organic Capacity (lbs/day)	Load Status	Biosolids Treatment	Biosolids Use/Disposal
0.03	62	Not Overloaded	Aerobic Digestion	Other WWTP

**2.3 Facility Outfall Information**

The facility has the following outfall information for wastewater.

Outfall No.	<u>001</u>	Design Flow (MGD)	<u>.03</u>
Latitude	<u>40° 13' 45.11"</u>	Longitude	<u>-78° 14' 34.73"</u>
Wastewater Description:	<u>Sewage Effluent</u>		

**2.3.1 Operational Considerations- Chemical Additives**

Chemical additives are chemical products introduced into a waste stream that is used for cleaning, disinfecting, or maintenance and which may be detected in effluent discharged to waters of the Commonwealth. Chemicals excluded are those used for neutralization of waste streams, the production of goods, and treatment of wastewater.

The subject facility utilizes the following chemicals as part of their treatment process.

- Calcium hypochlorite for disinfection

**2.4 Existing NPDES Permits Limits**

The existing NPDES permit limits are summarized in the table.

**PART A - EFFLUENT LIMITATIONS, MONITORING, RECORDKEEPING AND REPORTING REQUIREMENTS**

⊕ I. A. For Outfall 001, Latitude 40° 13' 45.10", Longitude 78° 14' 34.73", River Mile Index 41.75, Stream Code 13349  
 Receiving Waters: Raystown Branch Juniata River  
 Type of Effluent: Treated Sewage

1. The permittee is authorized to discharge during the period from March 1, 2014 through February 28, 2019.
2. Based on the anticipated wastewater characteristics and flows described in the permit application and its supporting documents and/or amendments, the following effluent limitations and monitoring requirements apply (see also Additional Requirements and Footnotes).

Parameter	Effluent Limitations						Monitoring Requirements	
	Mass Units (lbs/day) <sup>(1)</sup>		Concentrations (mg/L)				Minimum <sup>(2)</sup> Measurement Frequency	Required Sample Type
	Average Monthly	Daily Maximum	Minimum	Average Monthly	Daily Maximum	Instant. Maximum		
Flow (MGD)	Report	Report	XXX	XXX	XXX	XXX	Continuous	Measured
pH (S.U.)	XXX	XXX	6.0	XXX	XXX	9.0	1/day	Grab
Dissolved Oxygen	XXX	XXX	5.0	XXX	XXX	XXX	1/day	Grab
Total Residual Chlorine	XXX	XXX	XXX	0.5	XXX	1.6	1/day	Grab
CBOD5	XXX	XXX	XXX	25	XXX	50	2/month	8-Hr Composite
Total Suspended Solids	XXX	XXX	XXX	30	XXX	60	2/month	8-Hr Composite
Fecal Coliform (CFU/100 ml) May 1 - Sep 30	XXX	XXX	XXX	200 Geo Mean	XXX	1,000	2/month	Grab
Fecal Coliform (CFU/100 ml) Oct 1 - Apr 30	XXX	XXX	XXX	2,000 Geo Mean	XXX	10,000	2/month	Grab
Total Nitrogen	XXX	XXX	XXX	Report Annl Avg	XXX	XXX	1/year	Calculation
Nitrate-Nitrite as N	XXX	XXX	XXX	Report Annl Avg	XXX	XXX	1/year	8-Hr Composite
Total Kjeldahl Nitrogen	XXX	XXX	XXX	Report Annl Avg	XXX	XXX	1/year	8-Hr Composite
Total Phosphorus	XXX	XXX	XXX	Report Annl Avg	XXX	XXX	1/year	8-Hr Composite

Samples taken in compliance with the monitoring requirements specified above shall be taken at the following location(s): at Outfall 001

**3.0 Facility NPDES Compliance History**

**3.1 Summary of Inspections**

A summary of the most recent inspections during the existing permit review cycle is as follows.

The DEP inspector noted the following during the inspection.

06/05/2014:

- Start-up for the plant began on May 4, 2014

08/20/2015:

- The bench sheets were updated to include calibration information, daily test results, and times for composite samples.
- The composite samples consisted of 4 individual grab samples over an 8-hr period.
- The high-level alarm in the equalization tank needed a new siren. The siren was installed. The facility stated the alarm did not turn on when they tried it. The facility stated they would check the wiring.
- One of the two equalization pumps was out of service.
- The plant is shut-down for the season in October and would re-start in May.

06/19/2015:

- The facility was advised that composite samples were not being collected as required by the NPDES permit.
- The high-level alarm was not functional
- The facility was not submitting the correct DMR report forms.

07/27/2016:

- The inspection was a follow-up to check on the dissolved oxygen violation during the inspection on July 6, 2016.
- The facility had increased the speed of the biowheel to raise the dissolved oxygen level in the aeration and the dissolved oxygen in the final effluent.
- The DO measurement in the aeration during the inspection was 4.91 mg/l and the pH was 6.30.
- The DO reading in the chlorine contact tank was 4.30 mg/l. DEP instructed the facility to correct this deficiency to raise the DO level.
- Since the outfall was submerged in the middle of the receiving stream, the chlorine contact tank was the only viable sampling location.
- The facility's sand filter unit was repaired and is now online.

07/05/2017:

- The facility had a permit violation for fecal coliform in May 2017.
- Both sand filter pumps and one wet well pump were rebuilt since the last inspection.
- The facility was investigating into the cause of odors from the equalization tank.

07/27/2018:

- There was nothing significant to report.

**3.2 Summary of DMR Data**

A review of approximately 1-year of DMR data shows that the monthly average flow data for the facility below the design capacity of the treatment system. The maximum average flow data for the DMR reviewed was 0.011 MGD. The design capacity of the treatment system is 0.03 MGD.

**DMR Data for Outfall 001 (from September 1, 2018 to August 31, 2019)**

Parameter	AUG-19	JUL-19	JUN-19	MAY-19	APR-19	MAR-19	FEB-19	JAN-19	DEC-18	NOV-18	OCT-18	SEP-18
Flow (MGD) Average Monthly	0.002	0.003	0.011	0.008								
Flow (MGD) Daily Maximum	0.002	0.003	0.019	0.013								
pH (S.U.) Minimum	7.1	7.0	7.5	7.3								
pH (S.U.) Maximum	8.0	8.0	8.2	8.2								
DO (mg/L) Minimum	6.0	5.8	5.9	5.9								
TRC (mg/L) Average Monthly	0.35	0.4	0.41	0.36								
TRC (mg/L) Instantaneous Maximum	0.5	0.7	0.6	0.64								
CBOD5 (mg/L) Average Monthly	< 5.2	9.5	< 3.14	< 3								
TSS (mg/L) Average Monthly	8.0	6.1	1.6	2.4								
Fecal Coliform (CFU/100 ml) Geometric Mean	7	< 27	< 7	17								
Fecal Coliform (CFU/100 ml) Instantaneous Maximum	12.4	75	12.4	36.4								



### **3.3 Non-Compliance**

#### **3.3.1 Non-Compliance- NPDES Effluent**

A summary of the non-compliance to the permit limits for the existing permit cycle is as follows.

From the DMR data beginning in March 1, 2014 to October 23, 2019 , there were no observed effluent non-compliances.

#### **3.3.2 Non-Compliance- Enforcement Actions**

A summary of the non-compliance enforcement actions for the current permit cycle is as follows:

From the DMR data beginning in March 1, 2014 to October 23, 2019 , there were no observed enforcement actions.

### **3.4 Summary of Biosolids Disposal**

A summary of the biosolids disposed of from the facility is as follows.

The facility reported that they did not have off-site biosolids removal for the months from March 2019 to August 2019.

### **3.5 Open Violations**

No open violations existed as of October 2019.

## **4.0 Receiving Waters and Water Supply Information Detail Summary**

### **4.1 Receiving Waters**

The receiving waters has been determined to be the Raystown Branch Juniata River. The sequence of receiving streams that the Raystown Branch Juniata River discharges into is the Juniata River which eventually drains into the Chesapeake Bay.

### **4.2 Public Water Supply (PWS) Intake**

The closest PWS to the subject facility is the Lake Raystown Resort (PWS ID # 4310821) located approximately 10 miles downstream of the subject facility on the Raystown Lake. Based upon the distance and the flow rate of the facility, the PWS should not be impacted.

### **4.3 Class A Wild Trout Streams**

Class A Wild Trout Streams are waters that support a population of naturally produced trout of sufficient size and abundance to support long-term and rewarding sport fishery. DEP classifies these waters as high-quality coldwater fisheries.

The information obtained from EMAP suggests that no Class A Wild Trout Fishery will be impacted by this discharge.

### **4.4 2016 Integrated List of All Waters (303d Listed Streams):**

Section 303(d) of the Clean Water Act requires States to list all impaired surface waters not supporting uses even after appropriate and required water pollution control technologies have been applied. The 303(d) list includes the reason for impairment which may be one or more point sources (i.e. industrial or sewage discharges) or non-point sources (i.e. abandoned mine lands or agricultural runoff and the pollutant causing the impairment such as metals, pH, mercury or siltation).

States or the U.S. Environmental Protection Agency (EPA) must determine the conditions that would return the water to a condition that meets water quality standards. As a follow-up to listing, the state or EPA must develop a Total Maximum

Daily Load (TMDL) for each waterbody on the list. A TMDL identifies allowable pollutant loads to a waterbody from both point and non-point sources that will prevent a violation of water quality standards. A TMDL also includes a margin of safety to ensure protection of the water.

The water quality status of Pennsylvania's waters uses a five-part categorization (lists) of waters per their attainment use status. The categories represent varying levels of attainment, ranging from Category 1, where all designated water uses are met to Category 5 where impairment by pollutants requires a TMDL for water quality protection.

**The receiving waters is listed in the 2016 Pennsylvania Integrated Water Quality Monitoring and Assessment Report as a Category 2 waterbody. The surface waters is an attaining stream that supports aquatic life. The designated use has been classified as protected waters for trout stocking fishes and migratory fishes.**

**4.5 Low Flow Stream Conditions**

Water quality modeling estimates are based upon conservative data inputs. The data are typically estimated using either a stream gauge or through USGS web based StreamStats program. The NPDES effluent limits are based upon the combined flows from both the stream and the facility discharge.

A conservative approach to estimate the impact of the facility discharge using values which minimize the total combined volume of the stream and the facility discharge. The volumetric flow rate for the stream is based upon the seven-day, 10-year low flow (Q710) which is the lowest estimated flow rate of the stream during a 7 consecutive day period that occurs once in 10 year time period. The facility discharge is based upon a known design capacity of the subject facility.

The closest WQN and gauge stations to the subject facility is the Raystown Branch Juniata River station at Saxton, PA (WQN223 or USGS station number 1562000). This WQN station is located approximately 2 miles upstream of the subject facility while the gauge station is located 2 miles upstream of the subject facility. For WQM modeling, pH and stream water temperature data from the water quality network station was used. pH was estimated to be 8.0 and the stream water temperature was estimated to be 23.3 C. The low flow yield and the Q710 for the subject facility was estimated as shown below.

Gauge Station Data		
USGS Station Number	1562000	
Station Name	Raystown Branch Juniata River at Saxton, PA	
Q710	67.1	ft <sup>3</sup> /sec
Drainage Area (DA)	756	mi <sup>2</sup>
<b>Calculations</b>		
The low flow yield of the gauge station is:		
Low Flow Yield (LFY) = Q710 / DA		
LFY =	( 67.1 ft <sup>3</sup> /sec / 756 mi <sup>2</sup> )	
LFY =	0.0888	ft <sup>3</sup> /sec/mi <sup>2</sup>
The low flow at the subject site is based upon the DA of		
	784	mi <sup>2</sup>
Q710 = (LFY@gauge station)(DA@Subject Site)		
Q710 = (0.0888 ft <sup>3</sup> /sec/mi <sup>2</sup> )(784 mi <sup>2</sup> )		
Q710 =	69.585	ft <sup>3</sup> /sec

**4.6 Summary of Discharge, Receiving Waters and Water Supply Information**

Outfall No.	<u>001</u>	Design Flow (MGD)	<u>.03</u>
Latitude	<u>40° 13' 43.72"</u>	Longitude	<u>-78° 14' 34.11"</u>
Quad Name	<u></u>	Quad Code	<u></u>
Wastewater Description: <u>Sewage Effluent</u>			

Receiving Waters	<u>Raystown Branch Juniata River (TSF)</u>	Stream Code	<u>13349</u>
NHD Com ID	<u>65842267</u>	RMI	<u>36</u>
Drainage Area	<u>784</u>	Yield (cfs/mi <sup>2</sup> )	<u>0.0888</u>
Q <sub>7-10</sub> Flow (cfs)	<u>69.585</u>	Q <sub>7-10</sub> Basis	<u>StreamStats/Streamgauge</u>
Elevation (ft)	<u>791</u>	Slope (ft/ft)	<u></u>
Watershed No.	<u>11-D</u>	Chapter 93 Class.	<u>TSF, MF</u>
Existing Use	<u>Same as Chapter 93</u>	Existing Use Qualifier	<u></u>
Exceptions to Use	<u></u>	Exceptions to Criteria	<u></u>
Assessment Status	<u>Not Assessed; Supports aquatic life</u>		
Cause(s) of Impairment	<u>Not appl</u>		
Source(s) of Impairment	<u>Not appl</u>		
TMDL Status	<u>Not appl</u>	Name	<u></u>

Background/Ambient Data		Data Source	
pH (SU)	<u>8.0</u>	WQN223; Median July to Sept	<u></u>
Temperature (°F)	<u>23.3</u>	WQN223; Median July to Sept	<u></u>
Hardness (mg/L)	<u></u>		<u></u>
Other:	<u></u>		<u></u>

Nearest Downstream Public Water Supply Intake	<u>Lake Raystown Resort</u>		
PWS Waters	<u>Raystown Lake</u>	Flow at Intake (cfs)	<u></u>
PWS RMI	<u>28</u>	Distance from Outfall (mi)	<u>10</u>

**5.0: Overview of Presiding Water Quality Standards**

**5.1 General**

There are at least six (6) different policies which determines the effluent performance limits for the NPDES permit. The policies are technology based effluent limits (TBEL), water quality based effluent limits (WQBEL), antidegradation, total maximum daily loading (TMDL), anti-backsliding, and whole effluent toxicity (WET) The effluent performance limitations enforced are the selected permit limits that is most protective to the designated use of the receiving waters. An overview of each of the policies that are applicable to the subject facility has been presented in Section 6.

**5.2.1 Technology-Based Limitations**

TBEL treatment requirements under section 301(b) of the Act represent the minimum level of control that must be imposed in a permit issued under section 402 of the Act (40 CFR 125.3). Available TBEL requirements for the state of Pennsylvania are itemized in PA Code 25, Chapter 92a.47.

The presiding sources for the basis for the effluent limitations are governed by either federal or state regulation. The reference sources for each of the parameters is itemized in the tables. The following technology-based limitations apply, subject to water quality analysis and best professional judgement (BPJ) where applicable:

Parameter	Limit (mg/l)	SBC	Federal Regulation	State Regulation
CBOD <sub>5</sub>	25	Average Monthly	133.102(a)(4)(i)	92a.47(a)(1)
	40	Average Weekly	133.102(a)(4)(ii)	92a.47(a)(2)
Total Suspended Solids	30	Average Monthly	133.102(b)(1)	92a.47(a)(1)
	45	Average Weekly	133.102(b)(2)	92a.47(a)(2)
pH	6.0 – 9.0 S.U.	Min – Max	133.102(c)	95.2(1)
Fecal Coliform (5/1 – 9/30)	200 / 100 ml	Geo Mean	-	92a.47(a)(4)
Fecal Coliform (5/1 – 9/30)	1,000 / 100 ml	IMAX	-	92a.47(a)(4)
Fecal Coliform (10/1 – 4/30)	2,000 / 100 ml	Geo Mean	-	92a.47(a)(5)
Fecal Coliform (10/1 – 4/30)	10,000 / 100 ml	IMAX	-	92a.47(a)(5)
Total Residual Chlorine	0.5	Average Monthly	-	92a.48(b)(2)

**5.3 Water Quality-Based Limitations**

WQBEL are based on the need to attain or maintain the water quality criteria and to assure protection of designated and existing uses (PA Code 25, Chapter 92a.2). The subject facility that is typically enforced is the more stringent limit of either the TBEL or the WQBEL.

Determination of WQBEL is calculated by spreadsheet analysis or by a computer modeling program developed by DEP. DEP permit engineers utilize the following computing programs for WQBEL permit limitations: (1) MS Excel worksheet for Total Residual Chlorine (TRC); (2) WQM 7.0 for Windows Wasteload Allocation Program for Dissolved Oxygen and Ammonia Nitrogen Version 1.0 (WQM Model) and (3) PENTOXSD for Windows 2.0 (PENTOXSD) for Toxics pollutants.

**5.3.1 Water Quality Modeling 7.0**

The WQM Model is a computer model that is used to determine NPDES discharge effluent limitations for Carbonaceous BOD (CBOD<sub>5</sub>), Ammonia Nitrogen (NH<sub>3</sub>-N), and Dissolved Oxygen (DO) for single and multiple point source discharges scenarios. WQM Model is a complete-mix model which means that the discharge flow and the stream flow are assumed to instantly and completely mixed at the discharge node.

WQM recommends effluent limits for DO, CBOD<sub>5</sub>, and NH<sub>3</sub>-N in mg/l for the discharge(s) in the simulation.

Four types of limits may be recommended. The limits are (a) a *minimum concentration for DO in the discharge as 30-day average*; (b) a *30-day average concentration for CBOD5 in the discharge*; (c) a *30-day average concentration for the NH<sub>3</sub>-N in the discharge*; (d) *24-hour average concentration for NH<sub>3</sub>-N in the discharge*.

The WQM Model requires several input values for calculating output values. The source of data originates from either EMAP, the National Map, or Stream Stats. Data for stream gauge information, if any, was abstracted from USGS Low-Flow, Base-Flow, and Mean-Flow Regression Equations for Pennsylvania Streams authored by Marla H. Stuckey (Scientific Investigations Report 2006-5130).

The input values utilized for the modeling are summarized in the table which can be found in Attachment B.

**The applicable WQM Effluent Limit Type are discussed in Section 6 under the corresponding parameter which is either DO, CBOD, or ammonia-nitrogen.**

### **5.3.2 PENTOXSD Modeling**

PENTOXSD is not applicable to the subject facility.

### **5.3.3 Whole Effluent Toxicity (WET)**

WET is not applicable to the subject facility.

## **5.4 Total Maximum Daily Loading (TMDL)**

### **5.4.1 TMDL**

The goal of the Clean Water Act (CWA), which governs water pollution, is to ensure that all of the Nation's waters are clean and healthy enough to support aquatic life and recreation. To achieve this goal, the CWA created programs designed to regulate and reduce the amount of pollution entering United States waters. Section 303(d) of the CWA requires states to assess their waterbodies to identify those not meeting water quality standards. If a waterbody is not meeting standards, it is listed as impaired and reported to the U.S. Environmental Protection Agency. The state then develops a plan to clean up the impaired waterbody. This plan includes the development of a Total Maximum Daily Load (TMDL) for the pollutant(s) that were found to be the cause of the water quality violations. A Total Maximum Daily Load (tmdl) calculates the maximum amount of a specific pollutant that a waterbody can receive and still meet water quality standards.

Pennsylvania has committed to restoring all impaired waters by developing TMDLs and TMDL alternatives for all impaired waterbodies. The TMDL serves as the starting point or planning tool for restoring water quality.

#### **5.4.1.1 Local TMDL**

The subject facility does not discharge into a local TMDL.

#### **5.4.1.2 Chesapeake Bay TMDL Requirement**

The Chesapeake Bay Watershed is a large ecosystem that encompasses approximately 64,000 square miles in Maryland, Delaware, Virginia, West Virginia, Pennsylvania, New York and the District of Columbia. An ecosystem is composed of interrelated parts that interact with each other to form a whole. All of the plants and animals in an ecosystem depend on each other in some way. Every living thing needs a healthy ecosystem to survive. Human activities affect the Chesapeake Bay ecosystem by adding pollution, using resources and changing the character of the land.

Most of the Chesapeake Bay and many of its tidal tributaries have been listed as impaired under Section 303(d) of the federal Water Pollution Control Act ("Clean Water Act"), 33 U.S.C. § 1313(d). While the Chesapeake Bay is outside the boundaries of Pennsylvania, more than half of the State lies within the watershed. Two major rivers in Pennsylvania are part of the Chesapeake Bay Watershed. They are (a) the Susquehanna River and (b) the Potomac River. These two rivers total 40 percent of the entire Chesapeake Bay watershed.

The overall management approach needed for reducing nitrogen, phosphorus and sediment are provided in the Bay TMDL document and the Phase I and II WIPs which is described in the Bay TMDL document and Executive Order 13508.

The Bay TMDL is a comprehensive pollution reduction effort in the Chesapeake Bay watershed identifying the necessary pollution reductions of nitrogen, phosphorus and sediment across the seven Bay watershed jurisdictions of Delaware, Maryland, New York, Pennsylvania, Virginia, West Virginia and the District of Columbia to meet applicable water quality standards in the Bay and its tidal waters.

The Watershed Implementation Plans (WIPs) provides objectives for how the jurisdictions in partnership with federal and local governments will achieve the Bay TMDL's nutrient and sediment allocations. The jurisdictions have developed or will develop WIPs over three Phases.

Phase I and Phase II WIPs were developed and submitted to EPA in 2010 and 2012 for objectives to be implemented by 2017 and 2025 to achieve applicable water quality standards. The Phase II WIPs build on the initial Phase I WIPs platform by providing more specific local actions. In 2018, Phase III WIPs will be developed to include further actions for jurisdictions to implement between 2018 and 2025.

Section 7 of the Phase II WIP describes Pennsylvania's strategy for reducing nutrients to the Chesapeake Bay from wastewater facilities. The supplement to Section 7 of the Phase II WIP provides an update on Chesapeake Bay TMDL implementation activities for point sources and DEP's current implementation strategy for wastewater. The supplement is updated periodically to reflect changes due to PA DEP's permit actions as well as changes to strategies in managing the wastewater sector's allocated loads under the TMDL. The latest revision of the supplement was October 14, 2016.

The Chesapeake Bay TMDL (Appendix Q) categorizes point sources into four sectors

:

- Sector A- significant sewage dischargers;
- Sector B- significant industrial waste (IW) dischargers;
- Sector C- non-significant dischargers (both sewage and IW facilities); and
- Sector D- combined sewer overflows (CSOs).

All sectors contain a listing of individual facilities with NPDES permits that were believed to be discharging at the time the TMDL was published (2010). All sectors with the exception of the non-significant dischargers have individual wasteload allocations (WLAs) for TN and TP assigned to specific facilities. Non-significant dischargers have a bulk or aggregate allocation for TN and TP based on the facilities in that sector that were believed to be discharging at that time and their estimated nutrient loads.

Based upon the supplement the subject facility has been categorized as a Sector C discharger. The supplement defines Sector C as a sewage facility is considered non-significant dischargers if it is a Phase 4 facility or Phase 5 facility having a specified flow rate (i.e. Phase 4 facility  $\geq 0.2$  MGD and  $< 0.4$  MGD, Phase 5 facility  $> 0.002$  MGD and  $< 0.2$  MGD), a small flow/single residence sewage treatment facilities ( $\leq 0.002$  MGD), or a non-significant IW facilities. These facilities may be covered by statewide general permits or may have individual NPDES permits.

Currently, there are approximately 1,000 Phase 4 and 5 sewage facilities and approximately 740 small flow sewage treatment facilities covered by the general permit. There are also approximately 600 non-significant IW facilities.

For Phase 5 sewage facilities with individual permits (average annual design flow on August 29, 2005  $> 0.002$  MGD and  $< 0.2$  MGD), DEP will issue individual permits with monitoring and reporting for TN and TP throughout the permit term at a frequency no less than annually, unless (1) the facility has already conducted at least two years of nutrient monitoring and (2) a summary of the monitoring results are included in the next permit's fact sheet. If, however, Phase 5 facilities choose to expand, the renewed or amended permits will contain Cap Loads based on the lesser of (a) existing TN/TP concentrations at current design average annual flow or (b) 7,306 lbs/yr TN and 974 lbs/yr TP.

If no data are available to determine existing concentrations for expanding Phase 4 or 5 facilities, default concentrations of 25 mg/l TN and 4 mg/l TP may be used (these are the average estimated concentrations of all non-significant sewage facilities).

DEP will not issue permits to existing Phase 4 and 5 facilities containing Cap Loads unless it is done on a broad scale or unless the facilities are expanding.

For new Phase 4 and 5 sewage discharges, in general DEP will issue new permits containing Cap Loads of "0" and new facilities will be expected to purchase credits and/or apply offsets to achieve compliance, with the exception of small flow and single residence facilities.

A list of non-significant sewage and industrial waste dischargers with Cap Loads in NPDES permits is presented in Attachment B of the Phase 2 WIP.

**This facility is subject to Sector C monitoring requirements. It is not listed in Attachment B of the Phase 2 WIP. The facility has been recommended to monitor for nitrogen species and phosphorus at least 1x/yr.**

### **5.5 Anti-Degradation Requirement**

Chapter 93.4a of the PA regulations requires that surface water of the Commonwealth of Pennsylvania may not be degraded below levels that protect the existing uses. The regulations specifically state that *Existing instream water uses and the level of water quality necessary to protect the existing uses shall be maintained and protected*. Antidegradation requirements are implemented through DEP's guidance manual entitled Water Quality Antidegradation Implementation Guidance (Document #391-0300-02).

The policy requires DEP to protect the existing uses of all surface waters and the existing quality of High Quality (HQ) and Exceptional Value (EV) Waters. Existing uses are protected when DEP makes a final decision on any permit or approval for an activity that may affect a protected use. Existing uses are protected based upon DEP's evaluation of the best available information (which satisfies DEP protocols and Quality Assurance/Quality Control (QA/QC) procedures) that indicates the protected use of the waterbody.

For a new, additional, or increased point source discharge to an HQ or EV water, the person proposing the discharge is required to utilize a nondischarge alternative that is cost-effective and environmentally sound when compared with the cost of the proposed discharge. If a nondischarge alternative is not cost-effective and environmentally sound, the person must use the best available combination of treatment, pollution prevention, and wastewater reuse technologies and assure that any discharge is nondegrading. In the case of HQ waters, DEP may find that after satisfaction of intergovernmental coordination and public participation requirements lower water quality is necessary to accommodate important economic or social development in the area in which the waters are located. In addition, DEP will assure that cost-effective and reasonable best management practices for nonpoint source control in HQ and EV waters are achieved.

**The subject facility's discharge will be to a non-special protection waters and the permit conditions are imposed to protect existing instream water quality and uses. Neither HQ waters or EV waters is impacted by this discharge.**

### **5.6 Anti-Backsliding**

Anti-backsliding is a federal regulation which prohibits a permit from being renewed, reissued, or modified containing effluent limitations which are less stringent than the comparable effluent limitations in the previous permit (40 CFR 122.1.1 and 40 CFR 122.1.2). A review of the existing permit limitations with the proposed permit limitations confirm that the facility is consistent with anti-backsliding requirements. The facility has proposed effluent limitations that are as stringent as the existing permit.

### **6.0 NPDES Parameter Details**

The basis for the proposed sampling and their monitoring frequency that will appear in the permit for each individual parameter are itemized in this Section. The final limits are the more stringent of technology based effluent treatment (TBEL) requirements, water quality based (WQBEL) limits, TMDL, antidegradation, anti-degradation, or WET.

The reader will find in this section:

- a) a justification of recommended permit monitoring requirements and limitations for each parameter in the proposed NPDES permit;
- b) a summary of changes from the existing NPDES permit to the proposed permit; and

c) a summary of the proposed NPDES effluent limits.

**6.1 Recommended Monitoring Requirements and Effluent Limitations**

**6.1.1 Conventional Pollutants and Disinfection**

Summary of Proposed NPDES Parameter Details for Conventional Pollutants and Disinfection Heritage Cove Resort Campground; PA0246522			
Parameter	Permit Limitation Required by <sup>1</sup> :	Recommendation	
pH (S.U.)	TBEL	Monitoring:	The monitoring frequency shall be daily as a grab sample (Table 6-3).
		Effluent Limit:	Effluent limits may range from pH = 6.0 to 9.0
		Rationale:	The monitoring frequency has been assigned in accordance with Table 6-3 and the effluent limits assigned by Chapter 95.2(1).
Dissolved Oxygen	BPJ	Monitoring:	The monitoring frequency shall be daily as a grab sample (Table 6-3).
		Effluent Limit:	Effluent limits shall be greater than 5.0 mg/l.
		Rationale:	The monitoring frequency has been assigned in accordance with Table 6-3 and the effluent limits assigned by best professional judgement.
CBOD	TBEL	Monitoring:	The monitoring frequency shall be 2x/month as an 8-hr composite sample (Table 6-3).
		Effluent Limit:	Effluent limits shall not exceed 25 mg/l as an average monthly.
		Rationale:	The monitoring frequency has been assigned in accordance with Table 6-3 and the effluent limits assigned by Chapter 92a.47(a)(1). WQM modeling indicates that the TBEL is more stringent than the WQBEL. Thus, the permit limit is confined to TBEL.
TSS	TBEL	Monitoring:	The monitoring frequency shall be 2x/mo as an 8-hr composite sample (Table 6-3).
		Effluent Limit:	Effluent limits shall not exceed 30 mg/l as an average monthly.
		Rationale:	The monitoring frequency has been assigned in accordance with Table 6-3 and the effluent limits assigned by Chapter 92a.47(a)(1). While there is no WQM modeling for this parameter, the permit limit for TSS is generally assigned similar effluent limits as CBOD or BOD. Since the TBEL is more stringent than TBEL, TBEL will apply.
TRC	TBEL	Monitoring:	The monitoring frequency shall be on a daily basis as a grab sample (Table 6-3).
		Effluent Limit:	The average monthly limit should not exceed 0.5 mg/l and/or 1.6 mg/l as an instantaneous maximum.
		Rationale:	Chlorine in both combined (chloramine) and free form is extremely toxic to freshwater fish and other forms of aquatic life (Implementation Guidance Total Residual Chlorine 1). The TRC effluent limitations to be imposed on a discharger shall be the more stringent of either the WQBEL or TBEL requirements and shall be expressed in the NPDES permit as an average monthly and instantaneous maximum effluent concentration (Implementation Guidance Total Residual Chlorine 4). Based on the stream flow rate (lowest 7-day flow rate in 10 years) and the design flow rate of the subject facility calculated by the TRC Evaluation worksheet, the TBEL is more stringent than the WQBEL. The monitoring frequency has been assigned in accordance with Table 6-3 and the effluent limits assigned by Chapter 92a.48(b)(2)
Fecal Coliform	TBEL	Monitoring:	The monitoring frequency shall be 2x/month as a grab sample (Table 6-3).
		Effluent Limit:	Summer effluent limits shall not exceed 200 mg/l as a geometric mean. Winter effluent limits shall not exceed 2000 mg/l as a geometric mean.
		Rationale:	The monitoring frequency has been assigned in accordance with Table 6-3 and the effluent limits assigned by Chapter 92a.47(a)(4) and 92a.47(a)(5).

**Notes:**

1 The NPDES permit was limited by (a) anti-Backsliding, (b) Anti-Degradation, (c) SOP, (d) TBEL, (e) TMDL, (f) WQBEL, or (g) WET

2 Monitoring frequency based on flow rate of 0.03 MGD.

3 Table 6-3 (Self Monitoring Requirements for Sewage Discharges) in Technical Guidance for the Development and Specification of Effluent Limitations and Other Permit Conditions in NPDES Permits) (Document # 362-0400-001) Revised 10/97

4 Water Quality Antidegradation Implementaton Guidance (Document # 391-0300-002)

5 Phase 2 Watershed Implementation Plan Wastewater Supplement, Revised September 6, 2017



**6.1.2 Nitrogen Species and Phosphorus**

Summary of Proposed NPDES Parameter Details for Nitrogen Species and Phosphorus			
Heritage Cove Resort Campground; PA0246522			
Parameter	Permit Limitation Required by <sup>1</sup> :	Recommendation	
<b>Ammonia-Nitrogen</b>	Cheapeake Bay TMDL	Monitoring:	The monitoring frequency shall be 1x/yr as an 8-hr composite sample
		Effluent Limit:	No effluent requirements.
		Rationale:	Due to the Chesapeake Bay Implementation Plan, the facility is required to be monitored on a frequency at least annually.
<b>Nitrate-Nitrite as N</b>	Cheapeake Bay TMDL	Monitoring:	The monitoring frequency shall be 1x/yr as an 8-hr composite sample
		Effluent Limit:	No effluent requirements.
		Rationale:	Due to the Chesapeake Bay Implementation Plan, the facility is required to be monitored on a frequency at least annually.
<b>Total Nitrogen</b>	Cheapeake Bay TMDL	Monitoring:	The monitoring frequency shall be 1x/yr as an 8-hr composite sample
		Effluent Limit:	No effluent requirements.
		Rationale:	Due to the Chesapeake Bay Implementation Plan, the facility is required to be monitored on a frequency at least annually.
<b>TKN</b>	Cheapeake Bay TMDL	Monitoring:	The monitoring frequency shall be 1x/yr as an 8-hr composite sample
		Effluent Limit:	No effluent requirements.
		Rationale:	Due to the Chesapeake Bay Implementation Plan, the facility is required to be monitored on a frequency at least annually.
<b>Total Phosphorus</b>	Cheapeake Bay TMDL	Monitoring:	The monitoring frequency shall be 1x/yr as an 8-hr composite sample
		Effluent Limit:	No effluent requirements.
		Rationale:	Due to the Chesapeake Bay Implementation Plan, the facility is required to be monitored on a frequency at least annually.
<b>Notes:</b>			
1 The NPDES permit was limited by (a) anti-Backsliding, (b) Anti-Degradation, (c) SOP, (d) TBEL, (e) TMDL, (f) WQBEL, or (g) WET			
2 Monitoring frequency based on flow rate of 0.03 MGD.			
3 Table 6-3 (Self Monitoring Requirements for Sewage Discharges) in Technical Guidance for the Development and Specification of Effluent Limitations and Other Permit Conditions in NPDES Permits) (Document # 362-0400-001) Revised 10/97			
4 Water Quality Antidegradation Implementaton Guidance (Document # 391-0300-002)			
5 Phase 2 Watershed Implementation Plan Wastewater Supplement, Revised September 6, 2017			

**6.2 Summary of Changes From Existing Permit to Proposed Permit**

A summary of how the proposed NPDES permit differs from the existing NPDES permit is summarized as follows.

Changes in Permit Monitoring or Effluent Quality		
Parameter	Existing Permit	Draft Permit
Ammonia-Nitrogen	No monitoring or effluent performance requirements.	Annual sample with no effluent performance requirements

**6.3.1 Summary of Proposed NPDES Effluent Limits**

The limitations and monitoring requirements specified below are proposed for the draft permit, and reflect the most stringent limitations amongst technology, water quality and BPJ. Instantaneous Maximum (IMAX) limits are determined using multipliers of 2 (conventional pollutants) or 2.5 (toxic pollutants). Sample frequencies and types are derived from the “NPDES Permit Writer’s Manual” (362-0400-001), SOPs and/or BPJ.

The proposed NPDES effluent limitations are summarized in the table below.

**PART A - EFFLUENT LIMITATIONS, MONITORING, RECORDKEEPING AND REPORTING REQUIREMENTS**

I. A. For Outfall 001, Latitude 40° 13' 45.11", Longitude 78° 14' 34.73", River Mile Index 36, Stream Code 13349

Receiving Waters: Raystown Branch Juniata River (TSF)

Type of Effluent: Sewage Effluent

1. The permittee is authorized to discharge during the period from **Permit Effective Date** through **Permit Expiration Date**.
2. Based on the anticipated wastewater characteristics and flows described in the permit application and its supporting documents and/or amendments, the following effluent limitations and monitoring requirements apply (see also Additional Requirements and Footnotes).

Parameter	Effluent Limitations						Monitoring Requirements	
	Mass Units (lbs/day) <sup>(1)</sup>		Concentrations (mg/L)				Minimum <sup>(2)</sup> Measurement Frequency	Required Sample Type
	Average Monthly	Average Weekly	Minimum	Average Monthly	Maximum	Instant. Maximum		
Flow (MGD)	Report	Report Daily Max	XXX	XXX	XXX	XXX	Continuous	Measured
pH (S.U.)	XXX	XXX	6.0 Inst Min	XXX	XXX	9.0	1/day	Grab
Dissolved Oxygen	XXX	XXX	5.0 Inst Min	XXX	XXX	XXX	1/day	Grab
Total Residual Chlorine (TRC)	XXX	XXX	XXX	0.5	XXX	1.6	1/day	Grab
Carbonaceous Biochemical Oxygen Demand (CBOD5)	XXX	XXX	XXX	25	XXX	50	2/month	8-Hr Composite
Total Suspended Solids	XXX	XXX	XXX	30	XXX	60	2/month	8-Hr Composite
Fecal Coliform (No./100 ml) Oct 1 - Apr 30	XXX	XXX	XXX	2000 Geo Mean	XXX	10000	2/month	Grab
Fecal Coliform (No./100 ml) May 1 - Sep 30	XXX	XXX	XXX	200 Geo Mean	XXX	1000	2/month	Grab
Nitrate-Nitrite as N	XXX	XXX	XXX	Report Annl Avg	XXX	XXX	1/year	8-Hr Composite
Total Nitrogen	XXX	XXX	XXX	Report Annl Avg	XXX	XXX	1/year	Calculation
Ammonia-Nitrogen	XXX	XXX	XXX	Report Annl Avg	XXX	XXX	1/year	8-Hr Composite

Outfall001 , Continued (from Permit Effective Date through Permit Expiration Date)

Parameter	Effluent Limitations						Monitoring Requirements	
	Mass Units (lbs/day) <sup>(1)</sup>		Concentrations (mg/L)				Minimum <sup>(2)</sup> Measurement Frequency	Required Sample Type
	Average Monthly	Average Weekly	Minimum	Average Monthly Report Annl Avg	Maximum	Instant. Maximum		
Total Kjeldahl Nitrogen	XXX	XXX	XXX	Report Annl Avg	XXX	XXX	1/year	8-Hr Composite
Total Phosphorus	XXX	XXX	XXX	Report Annl Avg	XXX	XXX	1/year	8-Hr Composite

Samples taken in compliance with the monitoring requirements specified above shall be taken at the following location(s):

at Outfall 001

**6.3.2 Summary of Proposed Permit Part C Conditions**

The subject facility has the following Part C conditions.

- Chlorine Minimization
- Solids Management for Non-Lagoon Systems

Tools and References Used to Develop Permit	
<input checked="" type="checkbox"/>	WQM for Windows Model (see Attachment [redacted])
<input type="checkbox"/>	PENTOXSD for Windows Model (see Attachment [redacted])
<input checked="" type="checkbox"/>	TRC Model Spreadsheet (see Attachment [redacted])
<input type="checkbox"/>	Temperature Model Spreadsheet (see Attachment [redacted])
<input type="checkbox"/>	Toxics Screening Analysis Spreadsheet (see Attachment [redacted])
<input type="checkbox"/>	Water Quality Toxics Management Strategy, 361-0100-003, 4/06.
<input type="checkbox"/>	Technical Guidance for the Development and Specification of Effluent Limitations, 362-0400-001, 10/97.
<input type="checkbox"/>	Policy for Permitting Surface Water Diversions, 362-2000-003, 3/98.
<input type="checkbox"/>	Policy for Conducting Technical Reviews of Minor NPDES Renewal Applications, 362-2000-008, 11/96.
<input type="checkbox"/>	Technology-Based Control Requirements for Water Treatment Plant Wastes, 362-2183-003, 10/97.
<input type="checkbox"/>	Technical Guidance for Development of NPDES Permit Requirements Steam Electric Industry, 362-2183-004, 12/97.
<input type="checkbox"/>	Pennsylvania CSO Policy, 385-2000-011, 9/08.
<input type="checkbox"/>	Water Quality Antidegradation Implementation Guidance, 391-0300-002, 11/03.
<input type="checkbox"/>	Implementation Guidance Evaluation & Process Thermal Discharge (316(a)) Federal Water Pollution Act, 391-2000-002, 4/97.
<input type="checkbox"/>	Determining Water Quality-Based Effluent Limits, 391-2000-003, 12/97.
<input type="checkbox"/>	Implementation Guidance Design Conditions, 391-2000-006, 9/97.
<input type="checkbox"/>	Technical Reference Guide (TRG) WQM 7.0 for Windows, Wasteload Allocation Program for Dissolved Oxygen and Ammonia Nitrogen, Version 1.0, 391-2000-007, 6/2004.
<input type="checkbox"/>	Interim Method for the Sampling and Analysis of Osmotic Pressure on Streams, Brines, and Industrial Discharges, 391-2000-008, 10/1997.
<input type="checkbox"/>	Implementation Guidance for Section 95.6 Management of Point Source Phosphorus Discharges to Lakes, Ponds, and Impoundments, 391-2000-010, 3/99.
<input type="checkbox"/>	Technical Reference Guide (TRG) PENTOXSD for Windows, PA Single Discharge Wasteload Allocation Program for Toxics, Version 2.0, 391-2000-011, 5/2004.
<input type="checkbox"/>	Implementation Guidance for Section 93.7 Ammonia Criteria, 391-2000-013, 11/97.
<input type="checkbox"/>	Policy and Procedure for Evaluating Wastewater Discharges to Intermittent and Ephemeral Streams, Drainage Channels and Swales, and Storm Sewers, 391-2000-014, 4/2008.
<input type="checkbox"/>	Implementation Guidance Total Residual Chlorine (TRC) Regulation, 391-2000-015, 11/1994.
<input type="checkbox"/>	Implementation Guidance for Temperature Criteria, 391-2000-017, 4/09.
<input type="checkbox"/>	Implementation Guidance for Section 95.9 Phosphorus Discharges to Free Flowing Streams, 391-2000-018, 10/97.
<input type="checkbox"/>	Implementation Guidance for Application of Section 93.5(e) for Potable Water Supply Protection Total Dissolved Solids, Nitrite-Nitrate, Non-Priority Pollutant Phenolics and Fluorides, 391-2000-019, 10/97.
<input type="checkbox"/>	Field Data Collection and Evaluation Protocol for Determining Stream and Point Source Discharge Design Hardness, 391-2000-021, 3/99.
<input type="checkbox"/>	Implementation Guidance for the Determination and Use of Background/Ambient Water Quality in the Determination of Wasteload Allocations and NPDES Effluent Limitations for Toxic Substances, 391-2000-022, 3/1999.
<input type="checkbox"/>	Design Stream Flows, 391-2000-023, 9/98.
<input type="checkbox"/>	Field Data Collection and Evaluation Protocol for Deriving Daily and Hourly Discharge Coefficients of Variation (CV) and Other Discharge Characteristics, 391-2000-024, 10/98.
<input type="checkbox"/>	Evaluations of Phosphorus Discharges to Lakes, Ponds and Impoundments, 391-3200-013, 6/97.
<input type="checkbox"/>	Pennsylvania's Chesapeake Bay Tributary Strategy Implementation Plan for NPDES Permitting, 4/07.
<input checked="" type="checkbox"/>	SOP: New and Reissuance Sewage Individual NPDES Permit Applications, Revised October 11, 2013.
<input type="checkbox"/>	Other: [redacted]

# Attachment A

## Stream Stats/Gauge Data

14 Selected Streamflow Statistics for Streamgage Locations in and near Pennsylvania

**Table 1.** List of U.S. Geological Survey streamgage locations in and near Pennsylvania with updated streamflow statistics.—Continued

[Latitude and Longitude in decimal degrees; mi<sup>2</sup>, square miles]

Streamgage number	Streamgage name	Latitude	Longitude	Drainage area (mi <sup>2</sup> )	Regulated <sup>1</sup>
01561000	Brush Creek at Gapsville, Pa.	39.956	-78.254	36.8	N
01562000	Raystown Branch Juniata River at Saxton, Pa.	40.216	-78.265	756	N
01562500	Great Trough Creek near Marklesburg, Pa.	40.350	-78.130	84.6	N
01563200	Raystown Branch Juniata River below Rays Dam nr Huntingdon, Pa.	40.429	-77.991	960	Y
01563500	Juniata River at Mapleton Depot, Pa.	40.392	-77.935	2,030	Y
01564500	Aughwick Creek near Three Springs, Pa.	40.213	-77.925	205	N
01565000	Kishacoquillas Creek at Reedsville, Pa.	40.655	-77.583	164	N
01565700	Little Lost Creek at Oakland Mills, Pa.	40.605	-77.311	6.52	N
01566000	Tuscarora Creek near Port Royal, Pa.	40.515	-77.419	214	N
01566500	Cocolamus Creek near Millerstown, Pa.	40.566	-77.118	57.2	N
01567000	Juniata River at Newport, Pa.	40.478	-77.129	3,354	Y
01567500	Bixler Run near Loysville, Pa.	40.371	-77.402	15.0	N
01568000	Sherman Creek at Shermans Dale, Pa.	40.323	-77.169	207	N
01568500	Clark Creek near Carsonville, Pa.	40.460	-76.751	22.5	LF
01569000	Stony Creek nr Dauphin, Pa.	40.380	-76.907	33.2	N
01569800	Letort Spring Run near Carlisle, Pa.	40.235	-77.139	21.6	N
01570000	Conodoguinet Creek near Hogestown, Pa.	40.252	-77.021	470	LF
01570500	Susquehanna River at Harrisburg, Pa.	40.255	-76.886	24,100	Y
01571000	Paxton Creek near Penbrook, Pa.	40.308	-76.850	11.2	N
01571500	Yellow Breeches Creek near Camp Hill, Pa.	40.225	-76.898	213	N
01572000	Lower Little Swatara Creek at Pine Grove, Pa.	40.538	-76.377	34.3	N
01572025	Swatara Creek near Pine Grove, Pa.	40.533	-76.402	116	N
01572190	Swatara Creek near Inwood, Pa.	40.479	-76.531	167	N
01573000	Swatara Creek at Harper Tavern, Pa.	40.403	-76.577	337	N
01573086	Beck Creek near Cleona, Pa.	40.323	-76.483	7.87	N
01573160	Quittapahilla Creek near Bellegrove, Pa.	40.343	-76.562	74.2	N
01573500	Manada Creek at Manada Gap, Pa.	40.397	-76.709	13.5	N
01573560	Swatara Creek near Hershey, Pa.	40.298	-76.668	483	N
01574000	West Conewago Creek near Manchester, Pa.	40.082	-76.720	510	N
01574500	Codorus Creek at Spring Grove, Pa.	39.879	-76.853	75.5	Y
01575000	South Branch Codorus Creek near York, Pa.	39.921	-76.749	117	Y
01575500	Codorus Creek near York, Pa.	39.946	-76.755	222	Y
01576000	Susquehanna River at Marietta, Pa.	40.055	-76.531	25,990	Y
01576085	Little Conestoga Creek near Churchtown, Pa.	40.145	-75.989	5.82	N
01576500	Conestoga River at Lancaster, Pa.	40.050	-76.277	324	N
01576754	Conestoga River at Conestoga, Pa.	39.946	-76.368	470	N
01578310	Susquehanna River at Conowingo, Md.	39.658	-76.174	27,100	Y
01578400	Bowery Run near Quarryville, Pa.	39.895	-76.114	5.98	N
01580000	Deer Creek at Rocks, Md.	39.630	-76.403	94.4	N
01581500	Bynum Run at Bel Air, Md.	39.541	-76.330	8.52	N
01581700	Winters Run near Benson, Md.	39.520	-76.373	34.8	N
01582000	Little Falls at Blue Mount, Md.	39.604	-76.620	52.9	N
01582500	Gunpowder Falls at Glencoe, Md.	39.550	-76.636	160	Y
01583000	Slade Run near Glyndon, Md.	39.495	-76.795	2.09	N
01583100	Piney Run at Dover, Md.	39.521	-76.767	12.3	N

26 Selected Streamflow Statistics for Streamgage Locations in and near Pennsylvania

Table 2. Selected low-flow statistics for streamgage locations in and near Pennsylvania.—Continued

[ft<sup>3</sup>/s; cubic feet per second; —, statistic not computed; <, less than]

Streamgage number	Period of record used in analysis <sup>1</sup>	Number of years used in analysis	1-day, 10-year (ft <sup>3</sup> /s)	7-day, 10-year (ft <sup>3</sup> /s)	7-day, 2-year (ft <sup>3</sup> /s)	30-day, 10-year (ft <sup>3</sup> /s)	30-day, 2-year (ft <sup>3</sup> /s)	90-day, 10-year (ft <sup>3</sup> /s)
01546000	1912–1934	17	1.8	2.2	6.8	3.7	12.1	11.2
01546400	1986–2008	23	13.5	14.0	19.6	15.4	22.3	18.7
01546500	1942–2008	67	26.8	29.0	41.3	31.2	44.2	33.7
01547100	1969–2008	40	102	105	128	111	133	117
01547200	1957–2008	52	99.4	101	132	106	142	115
01547500	<sup>2</sup> 1971–2008	38	28.2	109	151	131	172	153
01547500	<sup>3</sup> 1956–1969	14	90.0	94.9	123	98.1	131	105
01547700	1957–2008	52	.5	.6	2.7	1.1	3.9	2.2
01547800	1971–1981	11	1.6	1.8	2.4	2.1	2.9	3.5
01547950	1970–2008	39	12.1	13.6	28.2	17.3	36.4	23.8
01548005	<sup>2</sup> 1971–2000	25	142	151	206	178	241	223
01548005	<sup>3</sup> 1912–1969	58	105	114	147	125	165	140
01548500	1920–2008	89	21.2	24.2	50.1	33.6	68.6	49.3
01549000	1910–1920	11	26.0	32.9	78.0	46.4	106	89.8
01549500	1942–2008	67	.6	.8	2.5	1.4	3.9	2.6
01549700	1959–2008	50	33.3	37.2	83.8	51.2	117	78.4
01550000	1915–2008	94	6.6	7.6	16.8	11.2	24.6	18.6
01551500	<sup>2</sup> 1963–2008	46	520	578	1,020	678	1,330	919
01551500	<sup>3</sup> 1901–1961	61	400	439	742	523	943	752
01552000	1927–2008	80	20.5	22.2	49.5	29.2	69.8	49.6
01552500	1942–2008	67	.9	1.2	3.1	1.7	4.4	3.3
01553130	1969–1981	13	1.0	1.1	1.5	1.3	1.8	1.7
01553500	<sup>2</sup> 1968–2008	41	760	838	1,440	1,000	1,850	1,470
01553500	<sup>3</sup> 1941–1966	26	562	619	880	690	1,090	881
01553700	1981–2008	28	9.1	10.9	15.0	12.6	17.1	15.2
01554000	<sup>2</sup> 1981–2008	28	1,830	1,990	3,270	2,320	4,210	3,160
01554000	<sup>3</sup> 1939–1979	41	1,560	1,630	2,870	1,880	3,620	2,570
01554500	1941–1993	53	16.2	22.0	31.2	25.9	35.7	31.4
01555000	1931–2008	78	33.5	37.6	58.8	43.4	69.6	54.6
01555500	1931–2008	78	4.9	6.5	18.0	9.4	24.3	16.6
01556000	1918–2008	91	43.3	47.8	66.0	55.1	75.0	63.7
01557500	1946–2008	63	2.8	3.2	6.3	4.2	8.1	5.8
01558000	1940–2008	69	56.3	59.0	79.8	65.7	86.2	73.7
01559000	1943–2008	66	104	177	249	198	279	227
01559500	1931–1958	28	9.3	10.5	15.0	12.4	17.8	15.8
01559700	1963–1978	16	.1	.1	.2	.1	.3	.2
01560000	1941–2008	68	8.5	9.4	15.6	12.0	20.2	16.2
01561000	1932–1958	27	.4	.5	1.6	.8	2.5	1.7
01562000	1913–2008	96	64.1	67.1	106	77.4	122	94.5
01562500	1931–1957	27	1.1	1.6	3.8	2.3	5.4	3.7
01563200	<sup>2</sup> 1974–2008	35	—	—	—	112	266	129
01563200	<sup>3</sup> 1948–1972	25	10.3	28.2	86.1	64.5	113	95.5
01563500	<sup>2</sup> 1974–2008	35	384	415	519	441	580	493
01563500	<sup>3</sup> 1939–1972	34	153	242	343	278	399	333
01564500	1940–2008	69	3.6	4.2	10.0	6.2	14.4	10.6

# Attachment B

## Modeling Input Values

## WQM 7.0 Modeling Output Values



# Attachment C

## TRC Evaluation